

THE JOURNEY STARTS AT
REND LAKE COLLEGE



70+
PAGES OF FACTS & FIGURES
on student population,
human resources,
enrollment, retention
& more



BOOK
Data

Data that **DRIVES**
Decision-Making

TUITION & FEES • FINANCIAL AID • ICCB FACTS & FIGURES
STUDENT DEMOGRAPHICS • RETENTION & COMPLETION
GRADUATION RATES • INTERNAL AFFAIRS
STUDENT CONSUMER INFORMATION





Contents

- Presidential Welcome**..... 5
- Board of Trustees** 6
- History of Rend Lake College Board of Trustees**..... 7
- College Mission**..... 10
- Value Statement**..... 10
- Institutional Outcomes**..... 10
 - Who We Are..... 10
 - Who We Serve 10
 - Diversity of Culture 11
 - Diversity of Purpose..... 11
 - Definition of Equity..... 11
 - Neurodiversity Statement..... 11
- Common Outcome** 12
- Data Book** 12
- The Students**..... 12
- The Faculty and Staff** 12
- The Organization and District**..... 13
- District Information**..... 14
 - Population by County..... 14
 - District Population..... 14
 - Unemployment Rates by County 14
 - District Poverty Rates by County..... 15
 - District High School Graduation Count..... 15
- COVID-19 (Coronavirus)** 16
 - FALL 2020..... 16
 - SPRING 2021..... 16
- Section I: Tuition and Fees** 17
- Tuition and Fees**..... 18
 - Tuition per Credit Hour 18
 - Tuition Comparison..... 18
 - Cost of Attendance 19



Lab/Course Fees	19
Special Program Fees.....	19
Miscellaneous Fees and Options.....	20
Textbooks	20
Transcript Fee	20
Payment Plan	20
Non-Payment Fee	20
Parking and/or Speeding fines	20
Fines and Financial Obligations.....	20
Section II: Students.....	21
Students.....	22
Headcount by Enrollment Status.....	22
Headcount Attempted vs. Earned	23
Credit Hours	24
Total Credit Hours Attempted by Term	24
Total Credit Hours Earned by Term.....	24
FTE (full-time equivalency) by Fiscal Year	24
Total Reimbursable Credit Hours (by term).....	24
Dual Credit by Fiscal Year and High School.....	25
Dual Credit Textbook Savings Report	26
Dual Credit & Dual Enrollment.....	27
Dual Credit & Dual Enrollment by High School	27
Dual Credit & Dual Enrollment Students	28
Online Course Offerings/Enrollment.....	28
Hybrid Course Offerings/Enrollment	28
Section Size	29
Active Clubs	29
Academic Honors.....	30
Academic Warnings.....	30
Tutoring Center	31
Section III: Student Demographics.....	32
Student Demographics.....	33
Enrollment by Residency	33



Enrollment by State	34
Enrollment by County – Top 15 Counties	35
Enrollment by Student Level at Initial Registration for FY	35
Student by Generation	35
First-Time Freshman by Fiscal Year	36
Veteran Status	36
Enrollment by Degree/Certificate Type	36
Enrollment by GPA.....	37
Enrollment by Highest Degree Previously Earned.....	37
Students attending on Chargeback/Contractual Agreements.....	38
Contractual Agreement Totals	39
Section IV: Finances & Financial Aid	40
Finances.....	41
Revenue & Expenses	41
Fiscal Year Breakdown	41
Financial Aid.....	42
Financial Aid by Award Type.....	42
Financial Aid – IPEDS Report.....	43
Section V: Retention, Completion and Graduation Rates.....	44
Retention, Graduation Rates, and Completions	45
Retention Rates.....	45
Fall to Fall Adjusted Retention Rates.....	45
Graduation Rates.....	46
Completions	47
Completions by Gender & Ethnicity.....	47
Completions by Term Students Completed a Certificate or Degree.....	47
Completions by Degree/Certificate Type.....	47
Completion Detail by Degree/Certificate Type	48
Student Outcome Measures.....	51
Transfer Rates	51
Section VI - Student Consumer Information	52
Security Report.....	53
Student Right to Know.....	55



Section VII - Facts and Figures	56
ICCB Facts and Figures	57
Summary Profile of the Illinois Public Community Colleges.....	57
ICCB – Summary of Opening Fall Term FTE Students.....	58
ICCB Reimbursable Credit Hours.....	59
Section VIII - Internal Affairs	60
Internal Affairs	61
Employees.....	61
Total Employees by Status.....	61
Instructional Employees.....	61
Student to Faculty Ratio.....	61
Rend Lake College Organizational Chart	62
Outstanding Faculty & Staff Awards	65
Learning Resource Center	66
Library Materials.....	66
Library Services.....	66
Program Labs	67
Information Technology	68
Computer Lab (by Location).....	68
RLC Campus.....	68
Additional Locations.....	68
Grant Awards	69
Section VIII – RLC Foundation	70
Foundation Financials.....	71
Foundation Information.....	71

Presidential Welcome



A Message from the President

As the old adage goes, knowledge is power. Data-driven decision-making is vital in our lives and workplaces; contained within the Rend Lake College Data Book is some of the data we collect and examine over the course of the year. Looking at and considering this information is part of our commitment to bring you our best.

In the following pages, you will find facts and figures on our student population, human resources, enrollment numbers, retention and completion figures, and much more. We hope you find some value in this information, which we present here as another way we can be open and transparent with our community.

As always, this is your community college. Feel free to get in touch with us if you have questions or want to explore what we can do for you.

A handwritten signature in black ink, appearing to read "Terry Wilkerson".

Terry Wilkerson

Rend Lake College President



Board of Trustees

Board Year 2024
Larry Manning
Brian Dorris
Jeff Jones
Dr. David Asbery
Joe Coy
Ron Daniels
Tony Wielt
Student Trustee
Wyatt Hamson

Board Year 2023
Larry Manning
Brian Dorris
Jeff Jones
Dr. David Asbery
Joe Coy
Ron Daniels
Tony Wielt
Student Trustee
Maggie Stacey

Board Year 2022
Randy Rubenacker
Larry Manning
Brian Dorris
Dr. David Asbery
Randall Crocker
Jeff Jones
John Kabat
Student Trustee
Colt Henson

Board Year 2021
Randy Rubenacker
Larry Manning
Brian Dorris
Dr. David Asbery
Randall Crocker
Jeff Jones
John Kabat
Student Trustee
Nick Wimber

Board Year 2020
Randy Rubenacker
Larry Manning
Brian Dorris
Dr. David Asbery
Randall Crocker
John Kabat
Jeff Jones
Student Trustee
Dakota Tate

Board Year 2019
Randy Rubenacker
Larry Manning
Brian Dorris
Dr. David Asbery
Randall Crocker
John Kabat
Jeff Jones
Student Trustee
Remington Henson

History of Rend Lake College Board of Trustees

* 1966 - 1979

Dr. Allen Y. Baker
(Pinckneyville)

Elected to 1-yr. term; re-elected
to 3-year terms four times

* 1966 - 1978

Carleton Apple
(Enfield)

Elected to 3-yr. term; re-elected
to 3-yr. terms three more times

* 1966 - 1972

Melvin Farlow
(McLeansboro)

Elected to 3-year term;
re-elected in 1969; Board
President suffered heart attack
in '70, continued to serve but
declined leadership role in '71

*1966 - 1972

Harry N. Irwin
(Wayne City)

Elected to 3-year term; re-elected to
3-yr term a second time.

* 1966 - 1971

Dr. Curtis A. Parker
(Mt. Vernon)

Elected to 2-yr. term; re-elected
to 3-year term in 1968

* 1966 - 1969

Holland Simmons
(Benton)

Elected to 2-yr. term; re-elected
to 3-yr. term in 1968; passed away
July 27, '69

* 1966 - 1969

Forrest Stewart
(Texico)

Elected to 1-yr. term; re-elected
to 3-year term in 1967; moved
out of district during 2nd term

* 1969 - 1973

Huel Cross
(Belle Rive)

Appointed August 11 to fill
position held by F. Stewart;
elected to 3-year term in 1970

* 1969 - 1977

Marie Simmons
(Benton)

Appointed August 19 to fill
position held by late husband;
elected to 1-year unexpired
term in 1970; re-elected twice

* 1971 - 1976

Albert Gulley
(Benton)

Elected to fill position held
previously by C. Parker;
re-elected to 3-yr. term in 1974,
vacated seat August 4, 1976

* 1972 - 1978

B.B. Connaway
(McLeansboro)

Elected to 3-year term;
re-elected to 3-yr. term in 1975

* 1972 - 1975

William L. Moore
(Mt. Vernon)

Elected to 3-year term

* 1973 - 1976

David Skorch
(Dix)

Elected to 3-year term

* 1975 - 1976

O.K. Ausmus
(Benton)

Elected to 3-year term; moved
out of state in Year Two

* 1976 - 1986

Joseph A. McClure Jr.
(Mt. Vernon)

Appointed June 15 to fill
position held by O.K. Ausmus;
elected to 1-yr. unexpired term
in 1977; re-elected three times;
resigned October 21, 1986

* 1976 - 1999

Dr. W. Richard Simpson
(Benton)

Appointed August 17 to fill
position held by A. Gulley;
elected 1977; re-elected twice
to 3-year terms; re-elected to
5-yr. term in 1980; re-elected
to 6-year term in 1985; reelected
to 2-year term in 1997

* 1976 - 1978

Dr. Clyde R. Funkhouser
(Mt. Vernon)

Elected to 3-year term;
resigned May 16, 1978

* 1977 - 1989

Everett K. Thompson
(Sesser)

Elected to 3-year term;
re-elected to 5-yr. term in 1980;
re-elected to 6-yr. term in 1985;
resigned in 1989

* 1978 - 2013

Marvin W. Scott
(Belle Rive)

Appointed May 16 to fill position
held by C. Funkhouser; elected
to unexpired 4-year term in '79;
re-elected to 6-year terms five
more times

* 1978 - 1993

Joe H. Scrivner
(Mt. Vernon)

Elected to 3-year term;
re-elected to 6-yr. terms twice

* 1978 - 1985

Richard E. Herrin
(Benton)

Elected to 3-yr. term; re-elected
to 6-yr. term; resigned August 20
when moved out of district

* 1979 - 2001

Dr. Allan D. Patton
(Zeigler)

Elected to 3-yr. term, extended
to 4 years; re-elected to three
6-year terms

* 1985 - 1999

Dr. B. Kirby Browning

(Benton)

Appointed August 20 to fill position held by R. Herrin; elected to 6-year terms twice

* 1986 - 1987

Mark J. Ballard

(Mt. Vernon)

Appointed October 21 to fill position held by Joe McClure

* 1987 - 1988

David K. Dalby

(Benton)

Elected to 6-yr. term; resigned five months later on April 19

* 1988 - 1989

David Hurley

(Benton)

Appointed May 17 to fill position held by D. Dalby; chose not to run for unexpired 4-year term

* 1989 - 1997

Robert J. Kirkpatrick

(Sesser)

Appointed to fill position held by E. Thompson; elected in '89 to unexpired two-year term; re-elected to 6-year term

* 1989 - 1994

Olie Musgrave

(Mt. Vernon)

Elected to unexpired 4-year term; elected to 6-year term in 1993; resigned December 20 and moved out of district

* 1993 - 2011

William David Edmison

(Mt. Vernon)

Elected to three 6-year terms

* 1994 - 1996

Jim Hinman

(Mt. Vernon)

Appointed December 20 to fill position held by O. Musgrave; elected to unexpired 4-year term in 1995; passed away on May 30, 1996

* 1996 - 1997

Caroline Quinn

(Mt. Vernon)

Appointed June 11 to fill position held by J. Hinman; chose not to run in November 1997 election

* 1997 - 2009

Hunt Bonan

(McLeansboro / Mt. Vernon)

Elected to two 6-year terms

* 1997 - 2009 [See 2013-2025]

Randall Crocker

(Sesser)

Elected to two 6-year terms

* 1999 - 2005

Courtney Cox

(Benton)

Elected to 5 1/2-year term; Resigned position just months after re-election for 6-years

* 1999 - 2000

Dennis McEnaney

(Mt. Vernon)

Elected to 5 1/2-year term; moved out of district

* 2000 - 2001

Sam Mateer

(Mt. Vernon)

Appointed March 14 to fill position held by D. McEnaney; chose not to run in November election

* 2001 - 2011

William "Bill" Simpson

(Benton)

Appointed September 18 to replace Dr. A. Patton; already duly elected to assume seat in November; re-elected to 6-year term

* 2001 - 2008

Norma O'Daniel

(Mt. Vernon)

Elected to unexpired 4-year term; re-elected to 6-year term; resigned due to health

* 2005 - 2013

Bryan Drew

(Benton)

Appointed to fill position held by C. Cox; twice elected to 6-yr. terms; November resignation following April election

* 2008 - 2013

Ed Cunningham

(Mt. Vernon)

Appointed to fill position held by N. O'Daniel; elected to 6-yr. term in '09; moved out of district

* 2009 - 2017

Rick Marlow

(Mt. Vernon)

Elected to fill original, two-year unexpired term of N. O'Daniel; re-elected to 6-year term

* 2009 - 2010

Dr. Donald E. Mitchell

(McLeansboro)

Elected to six-year term, but stepped down over possible conflict of interest

* 2010 - 2011

Kelly Woodrow

(Hamilton County)

Appointed to fill position held by D. Mitchell; chose not to run

* 2011 - 2023

John Kabat

(Scheller)

Elected to 6-year term; re-elected to 6-year term

* 2011 - 2023

Randy Rubenacker

(McLeansboro)

Elected to 6-year term; re-elected to 6-year term

* 2011 - 2018

Eric Black

(Mt. Vernon)

Elected to fill unexpired 4-year term of K. Woodrow; re-elected to 6-year term; Resigned July 2018

* 2013 - 2025

Larry Manning

(Belle Rive)

Elected to 6-year term; re-elected to 6-year term

*2023 – 2025

Tony Wielt

(Whittington)

Appointed to fill unexpired term of R. Crocker

* 2013 - 2027

Dr. David S. Asbery

(Mt. Vernon)

Appointed to fill position held by E. Cunningham; elected to 6-year term in 2015 and 2021.

* 2013 – 2023 [See 1997-2009]

Randall Crocker

(Sesser)

Appointed to fill unexpired term of B. Drew; elected in 2015 to fill unexpired 4-year term; re-elected to 6-year term; passed away July 16, 2023

* 2017 – 2029

Brian Dorris

(Sesser)

Elected to 6-year term; re-elected to 6-year term

* 2019 – 2027

Jeff Jones

(Whittington)

August 2018 Appointed to unexpired term of E. Black, elected to 6-year term

*2023 – 2029

Joe Coy

(Wayne City)

Elected to 6-year term

*2023 – 2029

Ron Daniels

(Belle Rive)

Elected to 6-year term



College Mission

Rend Lake College provides educational opportunities across cultural and economic boundaries to the diverse student population we serve. We are committed to our students' success in achieving their educational goals and to meeting our community-focused program objectives. With Rend Lake College, student journeys start here.

Value Statement

In serving our students and community, we are student-focused, authentic, and resourceful.

Institutional Outcomes

Rend Lake College has adopted four essential learner outcomes, fundamental learning objectives embedded in every program of study, that all degree-completing students should be able to demonstrate. They are as follows:

Critical Thinking: Demonstrate the ability to think in a self-directed, reflective manner when understanding, evaluating and solving problems.

Problem-Solving: Demonstrate the ability to resolve computational problems.

Oral Communication: Demonstrate the ability to communicate clearly, concisely, and effectively through verbal and non-verbal language.

Written Communication: Demonstrate the ability to communicate clearly, concisely, and effectively through written language.

Who We Are

The College history defines the College from the perspective of organization and assets; however, the personnel who operate within the college systems and manage those assets are the primary element for successful education. Rend Lake College believes all employees, regardless of their job description, are part of each student's education. Administrative, community outreach, student service, and physical plant personnel all support the student learning process. Our instructors are primary points of contact with the Rend Lake College educational experience. These educators are generally organized into four divisions: Allied Health, Applied Science & Technology, Arts & Sciences, and Community & Corporate Education.

Whether in a supporting role or as a direct point of contact, each college employee draws upon professional expertise and academic accomplishment to promote the success of every student.

Who We Serve

Student-centered colleges are best defined by who they serve. An understanding of the distinctiveness of our College's student population allows us to effectively meet the goals of our programs and succeed in our mission.



Diversity of Culture

Traditionally, Rend Lake College can be characterized as serving a relatively homogenous, rural, small-town culture. This population's cultural distinctiveness is centered on age and socioeconomic status more than diverse ethnic origin. As global connectivity broadens, so too does Rend Lake College's program offerings. We continue to serve groups with diverse characteristics, such as:

- Age
- Disability
- Gender
- National origin
- Race/ethnicity
- Religion
- Socioeconomic status
- Special populations

Diversity of Purpose

Rend Lake College provides general, transfer, and career technical education to both traditional and non-traditional students through the use of reciprocal agreements; regional, state, and national education programs; dual-credit high school classes; and the endorsement of international students to help broaden our base. Rend Lake College offers skill and trade opportunities for students seeking employment and economic mobility. Additionally, Rend Lake College provides professional and personal fulfillment as well as growth through community and corporate education classes.

Often, an individual's purpose for engaging with the college is a combination of factors such as:

- Discovery / Curiosity
- Educational Requirements
- Enrichment / Hobby
- Healthy Lifestyle
- Lifelong Learning
- New / Enhanced skills
- Retraining

Definition of Equity

Equity is the guarantee of fair treatment, access, opportunity and advancement for all students, faculty, and staff, while at the same time striving to identify and eliminate barriers that have prevented the full participation of some groups.

Neurodiversity Statement

Rend Lake College values neurodiversity, including conditions such as autism, ADHD, dyslexia, and dyspraxia, as a crucial aspect of human variation that enhances our educational journey and community. Our commitment is to foster a supportive environment where neurodivergent individuals are acknowledged, respected, and enabled to unleash their full capabilities.

Working together, we can create a brighter future for all individuals, including those with neurodivergent conditions, by providing them with the necessary resources, support, and opportunities for success in and out of the classroom. Our commitment to embracing neurodiversity and learning more about its impact will bring positive outcomes for everyone involved.



Common Outcome

Regardless of the diverse cultural backgrounds, purposes or origins of our constituents, Rend Lake College serves each individual equally with an open admission policy and an opportunity for success. Furthermore, Rend Lake College is united by the shared commitment of students, faculty, staff, and community to meet its institutional, educational, and program objectives.

Data Book

The Rend Lake College Data Book is organized into nine sections: Tuition and Fees, Students, Student Demographics, Finances and Financial Aid, Retention, Completion and Graduation Rates, Student Consumer Information, ICCB Facts and Figures, Internal Affairs, RLC Foundation. An electronic version of the Data Book is available on our website at www.rlc.edu.

The Data Book is compiled by using information from the Illinois Community College Board; IPEDS; US Census Bureau; Department of Education; our internal student information system; and information collected from our division and department supervisors.

The Students

Community colleges serve close to half of the undergraduate students in the United States. The comprehensive mission of community colleges makes them attractive to a broad range of people who seek particular programs or special opportunities of interest.

We are proud to provide access to education for many traditional and non-traditional students, such as adults who are working while enrolled. We continue to serve students who take specific courses to get a head start in their college educational goals.

Rend Lake College is a diverse institution that serves a variety of needs. Our students include those that are attending to upgrade their skills for a particular job, students who are pursuing an associate degree or certificate, students who are planning to transfer to a four-year institution, and students who are pursuing a hobby or personal interest.

The Faculty and Staff

The faculty and staff are committed to providing the education and services that our students deserve. Students are far more than simply numbers at Rend Lake College.

We rely on a blend of full-time and part-time faculty to offer a broad array of courses to meet varying student curricular and scheduling needs. Adjunct faculty members have been a part of our faculty due to their technical skills and practical knowledge that are beneficial to our students. We value their expertise and workplace experiences to keep curricula fresh.

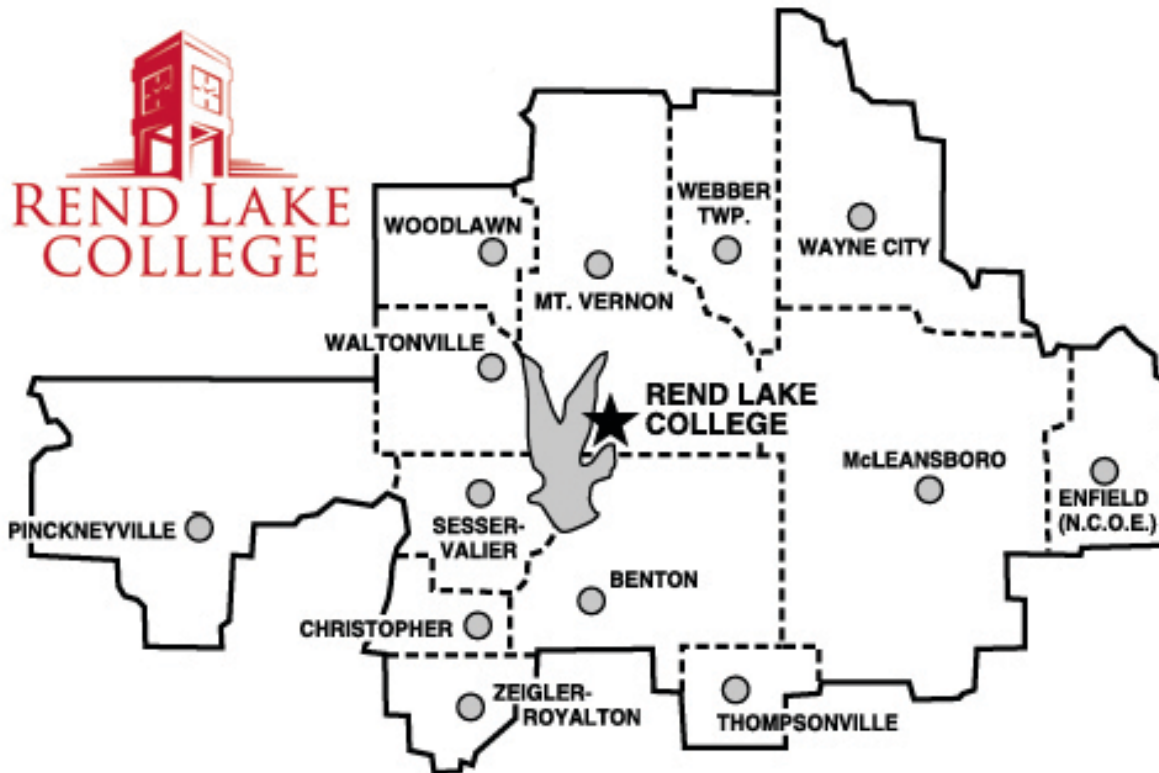
Staff form the backbone of all community colleges. Without the technical, professional, and clerical staff, our institution would not be able to perform the vital function of educating and assisting our students.



The Organization and District

The Rend Lake College (District 521) is located on the east shore of Rend Lake, the second-largest man-made lake in the state, with access provided by Interstate 57 and State Route 37. The college is centrally located within the community college district it serves.

Our district was established July 1, 1967, and covers portions of eight counties in Southern Illinois. This includes the main portions of Franklin, Hamilton, Jefferson and Perry counties; large portions of Wayne and White counties; and small, unpopulated portions of Washington and Williamson counties. The main campus is home to 19 buildings, with two satellite campuses, the Rend Lake College MarketPlace in Mt. Vernon and Rend Lake College Murphy-Wall Campus in Pinckneyville.



Rend Lake College is dedicated to providing its students with preparation for entry into the job market and a solid academic base for transferring to a baccalaureate-granting institution with the current offerings of 100+ degree and certificate programs.

There are 13 public high schools served by the college:

- Benton Consolidated High School
- Christopher High School
- Hamilton County High School
- Mt. Vernon Township High School
- Norris City-Omaha-Enfield High School
- Pinckneyville Community High School
- Sesser-Valier High School
- Thompsonville High School
- Waltonville High School
- Wayne City High School
- Webber Township High School
- Woodlawn High School
- Zeigler-Royalton High School



District Information

Population by County

County	2019	2020	2021	2022	2023	5YR AVG	
Franklin County, Illinois	38469	37804	37442	37242	37138	37619	
Hamilton County, Illinois	8116	7993	7911	7984	7911	7983	
Jefferson County, Illinois	37684	37116	36877	36400	36320	36879.4	
Perry County, Illinois	20916	20945	20985	20588	20503	20787.4	
Wayne County, Illinois	16215	16179	15963	15872	15761	15998	
White County, Illinois	13537	13877	13784	13614	13401	13642.6	
Washington County, Illinois	13887	13761	13655	13643	13536	13696.4	
Williamson County, Illinois	66597	67153	66879	66695	66706	66806	

Source: US Census Bureau/Quick Facts

District Population

	2019	2020	2021	2022	2023	5YR AVG	
Total Population	87211	86116	85521	84742	84434	85605	
Age 16 & Older	70502	69727	69165	68755	68399	69309.6	

Source: ICCB District Census Data.

Unemployment Rates by County

	2019	2020	2021	2022	2023	5YR AVG	
Franklin	5.4%	10.5%	6.6%	5.2%	5.5%	6.6%	
Hamilton	3.9%	6.7%	4.3%	3.4%	3.8%	4.4%	
Jefferson	4.6%	10.1%	6.2%	4.6%	4.7%	6.0%	
Perry	5.1%	9.4%	5.8%	4.9%	5.3%	6.1%	
Wayne	4.8%	8.3%	4.7%	3.9%	4.6%	5.3%	
White	3.8%	7.6%	5.0%	3.9%	4.1%	4.9%	
Small Parts of:							
Washington	2.5%	5.3%	3.0%	2.4%	2.8%	3.2%	
Williamson	4.3%	8.7%	5.5%	4.3%	4.4%	5.4%	

Source: US Bureau of Labor Statistics – Annual Unemployment Rates



District Poverty Rates by County

	2018	2019	2020	2021	2022	5YR AVG	
U.S.	13.10%	12.30%	11.90%	12.80%	12.60%	12.54%	
Illinois	12.10%	11.40%	11.00%	12.10%	11.90%	11.70%	
Franklin	19.40%	16.40%	15.50%	16.50%	19.50%	17.46%	
Hamilton	12.30%	12.70%	13.00%	13.20%	13.40%	12.92%	
Jefferson	16.30%	14.90%	12.50%	15.30%	14.70%	14.74%	
Perry	17.80%	14.40%	15.10%	16.60%	14.90%	15.76%	
Wayne	13.80%	13.10%	12.90%	14.30%	13.70%	13.56%	
White	12.30%	14.50%	15.40%	15.70%	15.10%	14.60%	
Small Parts of:							
Washington	7.40%	8.10%	7.60%	8.50%	8.10%	7.94%	
Williamson	18.80%	16.40%	13.90%	14.70%	12.70%	15.30%	

Source: SAIFE: US Census Bureau

District High School Graduation Count

	2020	2021	2022	2023	2024	5YR AVG	
Benton Consolidated High School	134	104	143	112	115	122	
Christopher High School	56	53	57	51	44	52	
Hamilton County High School	92	70	89	72	72	79	
Mt. Vernon High School	251	247	261	251	267	255	
Norris City-Omaha-Enfield High School	38	46	37	50	46	43	
Pinckneyville Community High School	87	97	110	98	86	96	
Sesser-Valier High School	43	40	42	42	50	43	
Thompsonville High School	17	13	24	26	18	20	
Waltonville High School	29	17	27	22	20	23	
Wayne City High School	39	40	28	32	36	35	
Webber Township High School	24	31	33	31	24	29	
Woodlawn High School	40	46	49	38	47	44	
Zeigler-Royalton High School	38	39	33	31	26	33	
Total	888	843	933	856	851	880	

Source: Guidance Counselors from respected High Schools



COVID-19 (Coronavirus)

During the Spring 2020 semester, COVID-19, also known as Coronavirus, hit the United States and had an impact on the semester data. These impacts have been noted on each page that it has affected.

On March 13, 2020, Rend Lake College chose to close the campus for the remainder of the semester to protect its students, faculty, and staff. With the close of campus, some services on campus became unavailable and others transferred to the online community. Faculty and staff worked to make the transition to fully online for the students as seamless as possible, as well assist faculty and staff to work from home. This continued during the summer 2020 term as well.

FALL 2020

Rend Lake College provided more options for students to attend classes in the Fall of 2020. Classes were offered as online, hybrid, and hybrid flex models. Hybrid classes were partially face to face meetings with some online, or remote style, meetings. Hybrid flex provided students with the ability to come to the campus for class or remote during class time. Advising held virtual appointments to register students while the Bookstore provided shipping of textbooks to the student. Out-of-district tuition rates were waived for all courses that included an online component.

SPRING 2021

Rend Lake College continued to provide the same instruction as the previous semester. Warrior Sports started to open up again, more students returned to campus, and a graduation ceremony for both RLC 2020 and 2021 graduates was held.

The \$20 online course fee was waived for FY 2021 for all students.

For more information about the steps taken or what changes were made during the COVID-19 pandemic, please visit www.rlc.edu/coronavirus.



Section I: Tuition and Fees



Tuition and Fees

Current tuition rates for residents of the Rend Lake College district are published on our website, <https://www.rlc.edu/tuition>, and are published in our course schedules. Tuition rates are subject to change with Board of Trustees approval. Applicable fees, in addition to tuition, will also be charged to students who are associated with certain classes/programs.

In-district residents who are 60 years of age or older qualify as senior citizens, and are entitled to take college credit courses tuition-free. This does not include any fees charged for credit classes, nor does it include Community Education classes.

Tuition per Credit Hour

	FY2020*	FY2021	FY2022	FY2023**	FY2024
In-District	\$110.00	\$110.00	\$110.00	\$110.00	\$110.00
Universal Fee	\$25.00	\$25.00	\$25.00	\$40.00	\$40.00
Total Tuition & Fees	\$135.00	\$135.00	\$135.00	\$150.00	\$150.00
Out of District	\$175.00	\$175.00	\$175.00	\$220.00	\$220.00
Universal Fee	\$25.00	\$25.00	\$25.00	\$40.00	\$40.00
Total Tuition & Fees	\$200.00	\$200.00	\$200.00	\$260.00	\$260.00
Out of State	\$200.00	\$200.00	\$200.00	\$220.00	\$220.00
Universal Fee	\$25.00	\$25.00	\$25.00	\$40.00	\$40.00
Total Tuition & Fees	\$225.00	\$225.00	\$225.00	\$260.00	\$260.00
Out of Country	\$200.00	\$200.00	\$200.00	\$220.00	\$220.00
Universal Fee	\$25.00	\$25.00	\$25.00	\$40.00	\$40.00
Total Tuition & Fees	\$225.00	\$225.00	\$225.00	\$260.00	\$260.00

*Required fees for Summer 2019 were \$20, then Fall semester was increased to \$25.

**Instructional Support Fee includes costs associated with textbooks, technology costs which directly support academic functions, and other general costs associated with academic services of the College. Instructional Fee did not include textbooks until FY22.

Source: Business Office – Tuition and Fee rate schedule

Tuition Comparison

	2020	2021	2022	2023	2024	5YR AVG	
IECC	\$100.00	\$100.00	\$100.00	\$110.00	\$135.00	\$109.00	
John A Logan	\$125.00	\$133.00	\$140.00	\$145.00	\$145.00	\$137.60	
Rend Lake	\$110.00	\$110.00	\$110.00	\$110.00	\$110.00	\$110.00	
Shawnee	\$125.00	\$125.00	\$125.00	\$140.00	\$140.00	\$131.00	
Southeastern	\$106.00	\$106.00	\$106.00	\$106.00	\$110.00	\$106.80	
SWIC	\$113.00	\$113.00	\$118.00	\$120.00	\$123.00	\$117.40	



Cost of Attendance

The student budget for the year used to estimate Cost of Attendance is as follows for a full-time, in-district students during the nine-month school year. Living expenses, transportation, and miscellaneous expenses vary greatly with each student’s individual situation. However, for financial aid purposes, these costs are/were estimated as follows:

	2019	2020	2021	2022*	2023
In District (Books and Supplies)	\$5,850	\$5,850	\$5,850	\$4,900	\$4,900
Out of District (Books and Supplies)	\$7,800	\$7,800	\$7,800	\$6,850	\$8,200
Out of State (Books and Supplies)	\$8,550	\$8,550	\$8,550	\$7,600	\$8,200
Off-campus in-district (not with family) (total)	\$18,882	\$20,150	\$20,938	\$20,388	\$23,293
Off-campus out of district (not with family) (total)	\$20,832	\$22,100	\$22,888	\$22,338	\$26,593
Off-campus out of state (not with family) (total)	\$21,582	\$22,850	\$23,638	\$23,088	\$26,593
Off-campus in-district (with family) (total)	\$11,350	\$11,290	\$11,226	\$10,676	\$12,169
Off-campus out of district (with family) (total)	\$12,300	\$13,240	\$13,176	\$12,626	\$15,469
Off-campus out of state (with family) (total)	\$13,050	\$13,990	\$13,926	\$13,376	\$15,469

*In Fall 2022, tuition fees included book rentals.

(Off-campus, not with family includes living expenses and other expenses)

Source: NCES Education Statistics, December 2024.

Lab/Course Fees

Lab and course fees are available for viewing at <https://www.rlc.edu/financial-aid/course-fees>.

Special Program Fees

Students in select programs will have additional expenses depending on the program in which they are enrolled. These expenses include text and workbooks, and pertinent supply fees. More information is available at www.rlc.edu/program-cost-sheets.



Miscellaneous Fees and Options

Listed below are common fees and not intended to be an all-inclusive list.

Textbooks

The RLC Bookstore and Retail Store is located on the ground floor of the Academic Building. The All-Inclusive Program provides many books to students with the rental charges being included within the fees. Students have the option to opt-out of this program, but will be responsible for providing their own books. Some books for specific classes and programs are excluded from the All-Inclusive Program and must be purchased.

Transcript Fee

Student official transcripts are \$5.25 per paper transcript and \$6.25 per each electronic transcript. All requests are processed online at www.rlc.edu.

Payment Plan

The college does offer payment plans to students that provide a low-cost option for budgeting tuition and fees. Payments can be authorized from a checking or savings or by a credit card and allows students to schedule payments over a predetermined time period depending on when registration is completed.

Non-Payment Fee

If dropped for non-payment, a \$25 non-refundable service charge and a hold will be placed on the student's account. Before a student is allowed to re-enroll, the outstanding balance on his/her account must be paid in full.

Parking and/or Speeding fines

Vehicles must be parked inside the lines of the parking space. Parking tickets are \$25. Speeding tickets are \$25 up to 5 mph over posted speed limit. An additional \$25 fine is given if speed is over 5 mph beyond posted speed limit. Unauthorized parking in restricted spaces will result in a parking ticket. The fine for unauthorized parking in a handicapped space is \$250. Speeding tickets issued within 500 ft. of posted speed limits near the Rend Lake College Foundation Children's Center will be double the ticket fees.

Fines and Financial Obligations

Students who have past due financial obligations to Rend Lake College, including but not limited to library fines or charges, will not be permitted to register for classes or receive a transcript until satisfactory arrangements have been made to meet those obligations. Balances due at the conclusion of the semester will be considered past-due. Past-due accounts will be submitted to a debt recovery program. This may result in the garnishments of payments made to individuals with past-due accounts including, but not limited to, paychecks, tax refunds, commercial payments, and lottery winnings.



Section II: Students



Students

Headcount by Enrollment Status

	FY2019						FY2020					
	Summer 18		Fall 18		Spring 19		Summer 19		Fall 19		Spring 20*	
Full-Time	455	37.08%	1237	41.47%	1167	39.92%	378	39.25%	1127	40.47%	987	41.80%
Part-Time	772	62.92%	1746	58.53%	1756	60.08%	585	60.75%	1658	59.53%	1374	58.20%
Total	1227	100.00%	2983	100.00%	2923	100.00%	963	100.00%	2785	100.00%	2361	100.00%

	FY2021						FY2022					
	Summer 20		Fall 20		Spring 21		Summer 21		Fall 21		Spring 22	
Full-Time	297	36.22%	931	42.98%	901	43.19%	342	39.22%	954	43.30%	931	39.82%
Part-Time	523	63.78%	1235	57.02%	1185	56.81%	530	60.78%	1249	56.70%	1407	60.18%
Total	820	100.00%	2166	100.00%	2086	100.00%	872	100.00%	2203	100.00%	2338	100.00%

	FY2023						FY2024					
	Summer 22		Fall 22		Spring 23		Summer 23		Fall 23		Spring 24	
Full-Time	380	43.18%	1010	45.35%	883	39.74%	340	41.51%	942	43.35%	832	33.66%
Part-Time	500	56.82%	1217	54.65%	1339	60.26%	479	58.49%	1231	56.65%	1640	66.34%
Total	880	100.00%	2227	100.00%	2222	100.00%	819	100.00%	2173	100.00%	2472	100.00%

Source: ICCB A1

Headcount numbers by term are unduplicated, but total FY are duplicated as students could be enrolled for more than one semester during same FY.



Headcount Attempted vs. Earned

FY20	# of Students Enrolled	# of Students that earned hours	% of students that earned hours	# of Students that didn't earn hours	% of Students that didn't earn hours
Summer 19	963	890	92.42%	73	7.58%
Fall 19	2785	2507	90.02%	278	9.98%
Spring 20**	2361	2163	91.61%	198	8.39%
Total					25.95%

FY21	# of Students Enrolled	# of Students that earned hours	% of students that earned hours	# of Students that didn't earn hours	% of Students that didn't earn hours
Summer 20**	820	741	90.37%	79	9.63%
Fall 20**	2166	1998	92.24%	168	7.76%
Spring 21**	2086	1947	93.34%	139	6.66%
Total					24.05%

FY22	# of Students Enrolled	# of Students that earned hours	% of students that earned hours	# of Students that didn't earn hours	% of Students that didn't earn hours
Summer 21	872	822	94.27%	50	5.73%
Fall 21	2203	2048	92.96%	155	7.04%
Spring 22	2338	2185	93.46%	153	6.54%
Total					19.31%

FY23	# of Students Enrolled	# of Students that earned hours	% of students that earned hours	# of Students that didn't earn hours	% of Students that didn't earn hours
Summer 22	880	811	92.16%	69	7.84%
Fall 22	2227	2059	92.46%	168	7.54%
Spring 23	2222	2104	94.69%	118	5.31%
Total					20.70%

FY24	# of Students Enrolled	# of Students that earned hours	% of students that earned hours	# of Students that didn't earn hours	% of Students that didn't earn hours
Summer 23	819	764	93.28%	55	6.72%
Fall 23	2173	2029	93.37%	144	6.63%
Spring 24	2472	2342	94.74%	130	5.26%
Total					18.60%

**COVID-19



Credit Hours

Total Credit Hours Attempted by Term

	FY2020			FY2021			FY2022			FY2023			FY2024		
	Summer 19	Fall 19	Spring 20	Summer 20	Fall 20	Spring 21	Summer 21	Fall 21	Spring 22	Summer 22	Fall 22	Spring 23	Summer 23	Fall 23	Spring 24
Total by Term	4366.0	24168.5	21739.0	3521.0	19648.0	19741.0	3917.0	20777.0	20609.5	4098.5	21385.0	19184.0	3843.0	20301.5	19698.5
Total by FY	50273.5			42910			45303.5			44667.5			43843		

Source: ICCB A1

Note: There may be differences in hours between the SUSR and the A1 reports due to changes/corrections being made to accounts in the system, timing issues, and to improvements made in our reporting efficiencies.

Total Credit Hours Earned by Term

	FY2020			FY2021			FY2022			FY2023			FY2024		
	Summer 19	Fall 19	Spring 20	Summer 20	Fall 20	Spring 21	Summer 21	Fall 21	Spring 22	Summer 22	Fall 22	Spring 23	Summer 23	Fall 23	Spring 24
Total by Term	3823.0	20903.5	18698.5	3186.0	16898.0	17638.0	3535.5	18171.0	18074.5	3633.0	18256.0	17178.5	3381.0	17664.5	17630.0
Total by FY	43425			37722			39781			39067.5			38675.5		
Percent Hours Earned	86.38%			87.91%			87.81%			87.46%			88.21%		

Source: ICCB A1

Note: There may be differences in hours between the SUSR and the A1 reports due to changes/corrections being made to accounts in the system, timing issues, and to improvements made in our reporting efficiencies.

FTE (full-time equivalency) by Fiscal Year

FY2020	FY2021	FY2022	FY2023	FY2024
1676	1430	1510	1489	1461

Source: IPEDS 12-month Enrollment Report.

Total Reimbursable Credit Hours (by term)

	FY2019			FY2020			FY2021		
	Summer 18	Fall 18	Spring 19	Summer 19	Fall 19	Spring 20	Summer 20	Fall 20	Spring 21
Hours by Term	4590.5	24754	23848	3990.5	22540	20297	3260.5	18281	18722
Total FY	53191.5			46827.5			40263.5		

	FY2022			FY2023			FY2024		
	Summer 21	Fall 21	Spring 22	Summer 22	Fall 22	Spring 23	Summer 23	Fall 23	Spring 24
Hours by Term	3709.5	19361	19426	3768.5	19726	18090	3601.5	18850	18624
Total FY	42496.5			41584.5			41075.5		

Source: ICCB SUSR Report



Dual Credit by Fiscal Year and High School

		Benton	Christopher	Hamilton County	Herrin	Mt. Vernon	Marion	Pinckneyville	Sesser-Valley	Thompsonville	Watomville	Wayne City	Webber	Woodlawn	Zeigler	Franklin County Edge	Jefferson and Perry County Edge	Perry County CEO	TOTAL
FY 2020	STUDENTS ENROLLED (DUPLICATED)	409	118	76	115	757	20	411	25	92	106	113	137	78	79	23	29	14	2602
	TOTAL CREDIT HOURS	1208	384	214	308	2065.5	47	1329	69	320	314	339	440	251	244	103	131	63	7829.5
	SAVINGS TO STUDENTS (\$110* PER CREDIT HOUR)	\$132,880.00	\$42,240.00	\$ 23,540.00	\$33,880.00	\$227,205.00	\$5,170.00	\$146,190.00	\$ 7,590.00	\$35,200.00	\$34,540.00	\$37,290.00	\$48,400.00	\$27,610.00	\$26,840.00	\$11,330.00	\$14,410.00	\$6,930.00	
FY 2021	STUDENTS ENROLLED (DUPLICATED)	582	84	140	0	528	31	428	8	51	48	147	136	119	66	0	12	0	2368
	TOTAL CREDIT HOURS	1782	234	388	0	1337	78	1377	24	153	126	441	420	357	190	0	54	0	6907
	SAVINGS TO STUDENTS (\$110* PER CREDIT HOUR)	\$196,020.00	\$25,740.00	\$ 42,680.00	\$ -	\$147,070.00	\$8,580.00	\$151,470.00	\$ 2,640.00	\$16,830.00	\$13,860.00	\$48,510.00	\$46,200.00	\$39,270.00	\$20,900.00	\$ -	\$ 5,940.00	\$ -	
FY 2022	STUDENTS ENROLLED (DUPLICATED)	367	97	207	0	549	25	437	208	32	42	121	156	110	46	12	24	0	2433
	TOTAL CREDIT HOURS	1141	327	643	0	1561	70	1379	434	126	128	387	471	350	134	54	107	0	7312
	SAVINGS TO STUDENTS (\$110* PER CREDIT HOUR)	\$125,510.00	\$35,970.00	\$ 70,730.00	\$ -	\$171,710.00	\$7,700.00	\$151,690.00	\$47,740.00	\$13,860.00	\$14,080.00	\$42,570.00	\$51,810.00	\$38,500.00	\$14,740.00	\$ 5,940.00	\$11,770.00	\$ -	
FY 2023	STUDENTS ENROLLED (DUPLICATED)	348	64	160	0	480	5	450	74	45	59	105	203	84	41	16	34	0	2118
	TOTAL CREDIT HOURS	923	224	505	0	1431	10	1434	214	142	172	327	593	266	116	72	152	0	6357
	SAVINGS TO STUDENTS (\$110* PER CREDIT HOUR)	\$101,530.00	\$24,640.00	\$ 55,550.00	\$ -	\$157,410.00	\$1,100.00	\$157,740.00	\$23,540.00	\$15,620.00	\$18,920.00	\$35,970.00	\$65,230.00	\$29,260.00	\$12,760.00	\$ 7,920.00	\$16,720.00	\$ -	
FY 2024	STUDENTS ENROLLED (DUPLICATED)	623	56	142	0	603	0	320	31	54	62	220	153	114	12	27	52	0	2469
	TOTAL CREDIT HOURS	1599	181	446	0	1955	0	1040	88	162	178.5	665	450	318.5	75	90	178	0	7426
	SAVINGS TO STUDENTS (\$110* PER CREDIT HOUR)	\$175,890.00	\$19,910.00	\$ 49,060.00	\$ -	\$215,050.00	\$ -	\$114,400.00	\$ 9,680.00	\$17,820.00	\$19,635.00	\$73,150.00	\$49,500.00	\$35,035.00	\$ 8,250.00	\$ 9,900.00	\$19,580.00	\$ -	

Source: Dual Credit Headcount by High School Report (RLC Custom Reports). Some schools were added and have no previous data. These areas are noted by the star (*).



Dual Credit Textbook Savings Report

		BENTON	CHRISTOPHER	HAMILTON CO.	MT. VERNON	PINCKNEYVILLE	SESSER-VALIER	THOMPSONVILLE	WALTONVILLE	WAYNE CITY	WEBBER	WOODLAWN	ZEIGLER	TOTALS	
FY 2020	TEXTS	401	182	219	667	460	42	105	116	145	154	99	77	2667	
	CHARGES	\$ 4,569.65	\$ 1,820.00	\$ 3,107.20	\$ 6,670.00	\$ 4,600.00	\$ 420.00	\$ 1,050.00	\$ 1,160.00	\$ 1,450.00	\$ 1,540.00	\$ 990.00	\$ 770.00	\$ 28,146.85	
	VALUE	\$65,394.78	\$ 26,001.85	\$ 18,600.75	\$ 100,743.50	\$ 69,372.41	\$ 4,900.50	\$ 12,783.28	\$ 14,031.08	\$19,617.77	\$20,670.98	\$11,536.40	\$ 8,879.72	\$372,533.02	
														TOTAL SAVINGS	\$344,386.17
FY 2021	TEXTS	461	94	111	544	550	21	54	43	297	163	104	111	2553	
	CHARGES	\$ 5,799.30	\$ 940.00	\$ 2,803.20	\$ 5,440.00	\$ 5,500.00	\$ 210.00	\$ 540.00	\$ 430.00	\$ 2,970.00	\$ 1,630.00	\$ 1,040.00	\$ 1,110.00	\$ 28,412.50	
	VALUE	\$78,505.12	\$ 17,724.40	\$ 20,313.90	\$ 79,156.01	\$ 84,216.70	\$ 2,409.75	\$ 5,727.36	\$ 6,261.91	\$34,828.70	\$ 2,152.00	\$ 8,749.80	\$ 9,527.84	\$349,573.49	
														TOTAL SAVINGS	\$321,160.99
FY 2022	TEXTS	309	98	215	778	450	83	79	48	145	187	123	57	2572	
	CHARGES	\$17,304.00	\$ 980.00	\$ 4,475.40	\$ 7,780.00	\$ 5,520.00	\$ 830.00	\$ 2,430.52	\$ 480.00	\$ 1,810.00	\$ 2,350.00	\$ 1,543.56	\$ 570.00	\$ 46,073.48	
	VALUE	\$48,396.80	\$ 15,998.71	\$ 29,799.80	\$ 135,163.60	\$ 74,820.47	\$ 13,804.68	\$ 8,698.90	\$ 13,001.60	\$20,040.96	\$22,193.30	\$16,315.20	\$ 5,554.21	\$403,788.23	
														TOTAL SAVINGS	\$357,714.75
FY 2023	TEXTS	229	78	173	598	453	52	52	78	167	230	103	46	2259	
	CHARGES	\$ 3,082.45	\$ 780.00	\$ 2,944.00	\$ 5,980.00	\$ 6,050.00	\$ 26,260.00	\$ 775.54	\$ 4,615.00	\$ 1,670.00	\$ 3,140.00	\$ 1,390.00	\$ 885.00	\$ 57,571.99	
	VALUE	\$36,246.72	\$ 12,021.20	\$ 26,848.17	\$ 117,822.24	\$ 72,021.72	\$ 5,748.44	\$ 6,274.36	\$ 8,699.58	\$24,256.23	\$27,651.52	\$13,198.80	\$ 4,978.96	\$355,767.94	
														TOTAL SAVINGS	\$298,195.95
FY 2024	TEXTS	301	55	123	323	283	26	90	79	222	151	119	61	1833	
	CHARGES	\$ 4,969.88	\$ 550.00	\$ 2,534.40	\$ 3,230.00	\$ 4,030.00	\$ 260.00	\$ 2,919.79	\$ 1,370.00	\$ 2,220.00	\$ 2,320.00	\$ 1,310.00	\$ 1,089.96	\$ 26,804.03	
	VALUE	\$48,953.49	\$ 7,875.92	\$ 15,908.04	\$ 55,414.10	\$ 48,194.87	\$ 2,130.92	\$ 9,907.44	\$ 8,661.23	\$25,066.16	\$15,101.18	\$12,669.15	\$ 6,361.32	\$256,243.82	
														TOTAL SAVINGS	\$229,439.79

Note: Dual Credit textbooks are charged at the rental rate of \$10 per text. Not all texts are rented, some must be purchased.



Dual Credit & Dual Enrollment

	2019						2020						2021					
	Summer 2018		Fall 2018		Spring 2019		Summer 2019		Fall 2019		Spring 2020		Summer 2020		Fall 2020		Spring 2021	
	Students	Hours	Students	Hours	Students	Hours	Students	Hours	Students	Hours	Students	Hours	Students	Hours	Students	Hours	Students	Hours
Dual Credit	0	0	773	3911	802	4547	0	0	700	3201	721	3594	0	0	587	2915	598	3193
Dual Enrollment	137	636.5	22	47.5	23	83.5	108	490.5	29	94	47	133.5	110	468	60	99.5	24	132
Dual Credit & Dual Enrollment	0	0	85	758.5	86	1047.5	0	0	64	542	96	966	0	0	51	505	89	1082.5

	2022						2023						2024					
	Summer 2021		Fall 2021		Spring 2022		Summer 2022		Fall 2022		Spring 2023		Summer 2023		Fall 2023		Spring 2024	
	Students	Hours	Students	Hours	Students	Hours	Students	Hours	Students	Hours	Students	Hours	Students	Hours	Students	Hours	Students	Hours
Dual Credit	6	18	617	2744.5	595	3034	0	0	600	2897	598	3343	0	0	612	3176	670	3533
Dual Enrollment	89	444	25	121.5	19	104.5	98	438	78	136	60	147.5	105	529.5	11	40	19	82
Dual Credit & Dual Enrollment	4	27	74	718.5	138	1528.5	0	0	41	365	38	429	0	0	35	356	77	896

Source: RLC Custom Reports

Dual Credit & Dual Enrollment by High School

	2020				2021				2022				2023				2024			
	Dual Credit	Dual Enrollment	Both DC/DE	Total	Dual Credit	Dual Enrollment	Both DC/DE	Total	Dual Credit	Dual Enrollment	Both DC/DE	Total	Dual Credit	Dual Enrollment	Both DC/DE	Total	Dual Credit	Dual Enrollment	Both DC/DE	Total
Benton Consolidated High School	100	11	33	144	104	5	42	151	89	6	30	125	118	10	15	143	135	6	31	172
Christopher High School	31	6	23	60	31	5	11	47	27	7	11	45	33	3	6	42	21	3	7	31
Hamilton County High School	72	12	11	95	57	10	16	83	42	7	32	81	77	12	22	111	40	6	22	68
Mt. Vernon High School	280	12	29	321	191	7	38	236	197	7	31	235	217	2	27	246	265	11	25	301
Norris City-Omaha-Enfield High School	-	2	-	2	-	3	-	3	-	-	-	0	1	1	-	2	-	-	-	0
Pinckneyville Community High School	88	7	15	110	81	31	17	129	105	4	13	122	103	97	10	210	65	2	17	84
Sesser-Valier High School	15	6	7	28	8	11	-	19	66	-	10	76	38	2	8	48	14	-	6	20
Thompsonville High School	16	-	6	22	6	1	6	13	5	-	10	15	13	1	-	14	13	-	1	14
Waltonville High School	22	2	10	34	20	-	5	25	14	-	7	21	17	-	5	22	15	1	6	22
Wayne City High School	31	4	3	38	34	-	3	37	16	2	16	34	41	2	4	47	37	-	4	41
Webber Township High School	30	1	4	35	22	1	3	26	15	2	12	29	33	1	10	44	16	1	8	25
Woodlawn High School	26	5	5	36	35	-	10	45	36	2	12	50	38	-	8	46	33	1	12	46
Zeigler-Royalton High School	20	1	14	35	25	3	4	32	18	3	5	26	22	1	2	25	17	1	3	21
Unknown High School	3	9	3	15	3	21	-	24	2	7	1	10	25	13	-	38	8	15	2	25
Other High Schools (Out-of-District)	31	4	4	39	19	8	-	27	17	1	1	19	12	2	5	19	-	4	-	4
Total	765	82	167	1014	636	106	155	897	649	48	191	888	788	147	122	1057	679	51	144	874



Dual Credit & Dual Enrollment Students

	2019		2020		2021		2022		2023	
	Attended	Did Not Attend	Attended	Did Not Attend	Attended	Did Not Attend	Attended	Did Not Attend	Attended	Did Not Attend
Benton Consolidated High School	53	29	26	37	27	32	21	47	19	25
Christopher High School	16	13	9	20	7	14	14	7	3	14
Hamilton County High School	35	16	30	21	23	10	14	15	16	14
Mt. Vernon High School	55	75	63	87	63	59	62	78	49	62
Norris City-Omaha-Enfield High School										
Pinckneyville Community High School	21	28	17	41	22	39	24	49	22	42
Sesser-Valier High School	20	13	9	10	4	5	19	18	15	9
Thompsonville High School	11	4	10	5	2	6	7	2	6	2
Waltonville High School	10	8	11	11	7	3	10	7	7	4
Wayne City High School	13	8	5	10	13	14	3	12	9	10
Webber Township High School	12	5	4	12	10	5	5	5	9	11
Woodlawn High School	17	23	8	12	16	11	17	16	7	21
Zeigler-Royalton High School	9	10	9	16	10	8	5	9	2	5
Total	266	241	201	292	205	214	201	274	165	226
Percentage	52.47%	47.53%	40.77%	59.23%	48.93%	51.07%	42.32%	57.68%	42.20%	57.80%

This shows the number of Dual Credit, Dual Enrollment, or both students by high school that came to RLC the following year.

Online Course Offerings/Enrollment

	FY2020			FY2021**			FY2022			FY2023			FY2024		
	Summer 19	Fall 19	Spring 20*	Summer 20	Fall 20	Spring 20	Summer 21	Fall 21	Spring 22	Summer 22	Fall 22	Spring 23	Summer 23	Fall 23	Spring 24
# of courses offered	22	51	60	70	147	169	63	133	103	63	88	75	24	75	86
# of students enrolled	369	848	1082	1131	3942	3647	556	1626	1526	596	1638	1214	526	1511	1597
Credit hours generated	1089	2412	2955.5	2726.5	11472.5	10545	1655.5	4600	4425	1716.5	4605	3474	1512	4113	4554.5

Hybrid Course Offerings/Enrollment

	FY2020			FY2021**			FY2022			FY2023			FY2024		
	Summer 19	Fall 19	Spring 20*	Summer 20	Fall 20	Spring 21	Summer 21	Fall 21	Spring 22	Summer 22	Fall 22	Spring 23	Summer 23	Fall 23	Spring 24
# of courses offered	13	37	See Below	9	119	99	16	26	25	12	30	33	14	27	24
# of students enrolled	201	317		123	1791	1345	119	269	318	131	379	382	139	285	291
Credit hours generated	586	834		533	7008.5	5562.5	439	806	1064	540	1258	1295	532	957	905

	Spring 20	Hybrid	Hybrid-Interactive
# of courses offered		4	33
# of students enrolled		9	301
Credit hours generated		15	919

*COVID-19 – Some classes were taken from Hybrid to Hybrid-Interactive.

**Due to COVID-19, campus was closed except for labs. All classes were moved to online or hybrid.

Source: RLC Custom Report, Hybrid and Online Classes



Section Size

Class Size	FY2020			FY2021			FY2022			FY2023			FY2024		
	Summer 19	Fall 19	Spring 20	Summer 20	Fall 20	Spring 21	Summer 21	Fall 21	Spring 22	Summer 22	Fall 22	Spring 23	Summer 23	Fall 23	Spring 24
	Total Classes	Total Classes	Total Classes	Total Classes	Total Classes	Total Classes	Total Classes	Total Classes	Total Classes	Total Classes	Total Classes	Total Classes	Total Classes	Total Classes	Total Classes
2-9	72	198	233	54	202	256	78	155	181	84	219	227	51	158	184
10-19	38	157	168	29	174	159	20	139	127	32	158	152	28	138	117
20-29	7	87	59	18	66	63	4	53	46	17	98	88	5	47	39
30-39	4	25	17	9	21	24	2	12	8	5	22	16	1	17	9
40-49	0	7	6	1	11	8	1	3	7	0	6	6	0	3	4
50-99	0	5	3	0	3	3	0	3	3	0	6	2	0	3	5
100+	0	0	0	0	0	0	0	0	0	0	0	0	0	0	0

Source: Section Size Report

Active Clubs

CLUB (Open & Membership)	SPONSOR
Agriculture	Kathy Helmers
Amateur Radio	Chris Edwards
Art Association	Melissa McClement-Engler
Chi Alpha	Jeannie Mitchell
CMYKlub-Graphic Design	Jennifer Tarantino-Linsin
Computer	Chris Edwards
Creative Writing	Peggy Davis
Culinary Arts	Jeff Fairbanks
Fellowship of Christian Athletes	Dave Ellingsworth
LGBTQA	Lynanne Page
Nursing	Sarah Hopfinger
Radiology	Holly Heisner
Rod Burners - Welding	Mike Meinert
The Student Athlete Committee	Chris Modellmog
Tabletop Gaming	Jeff Keen
Thespians	Tracey Webb
Veteran's Club	Lindsey Batts
ORGANIZATIONS (Closed/Selective Membership)	
Archery	Donnie Millenbine
Lambda Nu	Holly Heisner
Phi Theta Kappa	Jena Jensik
Student Ambassadors	Vickie Schulte
Trap Shooting	Dennis "Doc" Lynch

Source: Henry "Buster" Leeck, Associate VP of Academic and Student Services – December 2024



Academic Honors

A Full-time student whose grade point average is 3.5 or better is considered an honor student. Full-time students who compile a perfect 4.0 grade point average during the Fall or Spring semester will be named to the President’s List, while those students compiling between a 3.5 and 3.9 will be named to the Vice Presidents’ List. A student must have successfully completed all courses during the semester to be included on the President’s or the Vice Presidents’ List. Academic honors are announced shortly after the end of Fall and Spring semesters.

President's List	
FALL 2019	147
SPRING 2020	179
FALL 2020	148
SPRING 2021	179
FALL 2021	145
SPRING 2022	174
FALL 2022	172
SPRING 2023	197
FALL 2023	153
SPRING 2024	182

Vice Presidents' List	
FALL 2019	203
SPRING 2020	242
FALL 2020	189
SPRING 2021	208
FALL 2021	179
SPRING 2022	222
FALL 2022	193
SPRING 2023	209
FALL 2023	196
SPRING 2024	202

Academic Warnings

A degree or certificate seeking student who is enrolled in three or more credit hours during the Fall or Spring semester and whose grade point average falls below 2.0 will be placed on Academic Probation.

A degree or certificate seeking student who was on Academic Probation during the previous Fall or Spring semester of enrollment and has a current semester and a cumulative GPA of less than 2.0 will be placed on Academic Suspension. Further sanctions will apply as outlined in the current catalog for both academic warnings.

Probation	
FALL 2019	141
SPRING 2020	N/A*
FALL 2020	N/A*
SPRING 2021	N/A*
FALL 2021	123
SPRING 2022	75
FALL 2022	151
SPRING 2023	62
FALL 2023	99
SPRING 2024	76

Suspension	
FALL 2019	19
SPRING 2020	N/A*
FALL 2020	N/A*
SPRING 2021	N/A*
FALL 2021	N/A*
SPRING 2022	32
FALL 2022	11
SPRING 2023	23
FALL 2023	16
SPRING 2024	18

*Due to COVID-19, Probation and Suspension were not determined.
Source: Kelly Downes, Director of Student Records/Registrar



Tutoring Center

			Writing Center	Math Lab	Communications Center	General Tutoring	Tutoring Totals	CTE Totals
FY 2020	FALL 2019	NUMBER OF STUDENTS	73	189	68	18	348	154
		NUMBER OF HOURS	297	1162	59	126	1644	3839
	SPRING 2020*	NUMBER OF STUDENTS	18	132	19	8	177	73
		NUMBER OF HOURS	60	530	16	23	629	614
FY 2021	FALL 2020*	NUMBER OF STUDENTS	28	2	58	-	88	24
		NUMBER OF HOURS	77	17	66	-	160	21
	SPRING 2021*	NUMBER OF STUDENTS	21	2	47	-	70	15
		NUMBER OF HOURS	62	2	18	-	82	20
FY 2022	FALL 2021	NUMBER OF STUDENTS	17	113	0	3	133	44
		NUMBER OF HOURS	76	2037	0	6	2119	5960
	SPRING 2022	NUMBER OF STUDENTS	23	120	0	0	143	36
		NUMBER OF HOURS	170	1684	0	0	1854	638
FY 2023	FALL 2022	NUMBER OF STUDENTS	7	164	1	0	172	707
		NUMBER OF HOURS	24	3172	1	0	3197	34505**
	SPRING 2023	NUMBER OF STUDENTS	4	154	1	1	160	274
		NUMBER OF HOURS	28	2129	0	1	2158	5636
FY 2024	FALL 2023	NUMBER OF STUDENTS	3	185	2	3	193	92
		NUMBER OF HOURS	4	2474	1	2	2481	8505
	SPRING 2024	NUMBER OF STUDENTS	2	142	0	1	145	23
		NUMBER OF HOURS	3	2559	0	1	2563	4845

*Due to COVID-19, tutoring went online with no tracking available. Data only shows from January 1st to March 6th, 2020.

**Fall 2022, Athletic students started using CTE for study hall hours.

Source: RLC Custom Reports



Section III: Student Demographics



Student Demographics

	2020	2021	2022	2023	2024	5YR AVG	
Gender							
Male	1739	1385	1498	1478	1669	1554	
Female	1914	1755	1861	1955	1781	1853	
Total	3653	3140	3359	3433	3450	3407	
Age							
No Birthdate	0	0	0	0	0	0	
16 & Under	60	60	88	139	76	85	
17-20	1976	1603	1695	1657	1669	1720	
21-24	556	513	526	541	530	533	
25-30	306	295	306	320	383	322	
31-39	313	296	305	306	338	312	
40-55	308	265	330	359	358	324	
56-99	134	108	109	111	104	113	
Unknown	0	0	0	0	0	0	
Ethnicity*							
Asian	31	28	19	23	16	23	
American Indian or Alaska Native	21	36	14	13	8	18	
Black or African American	173	148	151	147	163	156	
Hispanic or Latino	52	64	79	77	83	71	
White	3340	2913	3006	3080	3088	3085	
Non-Resident Alien	3	1	1	0	0	1	
Native Hawaiian or Other Pacific Islander	5	6	27	5	5	10	
Unknown	28	0	62	19	11	24	
Two or More	-	-	-	69	84	77	

*When reporting to ICCB, starting in 2021, student can choose multiple ethnicities. Students will be duplicated.

Source: ICCB A1

Enrollment by Residency

	2020		2021		2022		2023		2024		5YR AVG	
In-District	3019	82.64%	2593	82.58%	2691	80.11%	2787	81.18%	2534	73.28%	2725	
Out of District	577	15.80%	521	16.59%	651	19.38%	617	17.97%	854	24.70%	644	
Out of State	42	1.15%	17	0.54%	12	0.36%	19	0.55%	59	1.70%	30	
Foreign Country	15	0.41%	9	0.29%	5	0.15%	10	0.29%	11	0.32%	10	

Source: ICCB A1



Enrollment by State

	2020	2021	2022	2023	2024
Illinois	3596	3115	3342	3404	3387
Indiana	6	3	2	3	25
Foreign	15	9	5	10	11
Ohio	0	0	0	1	9
Missouri	11	7	6	6	6
Kentucky	22	0	0	2	6
Tennessee	1	1	2	3	3
Texas	0	0	0	1	2
Wisconsin	0	0	0	1	2
North Carolina	0	0	0	0	2
Virginia	0	0	0	0	2
Iowa	0	0	0	0	1
Kansas	0	0	0	0	1
Michigan	0	0	0	1	0
Mississippi	0	0	0	1	0
Wisconsin	0	0	0	1	0
New York	0	0	1	0	0
North Dakota	0	0	1	0	0
Arizona	0	2	0	0	0
Alabama	0	1	0	0	0
California	0	1	0	0	0
Minnesota	0	1	0	0	0
Arkansas	1	0	0	0	0
Maryland	1	0	0	0	0
Alaska	0	0	0	0	0
Colorado	0	0	0	0	0
Florida	0	0	0	0	0
Georgia	0	0	0	0	0
Hawaii	0	0	0	0	0
Massachusetts	0	0	0	0	0
Nebraska	0	0	0	0	0
New Hampshire	0	0	0	0	0
New Jersey	0	0	0	0	0



Enrollment by County – Top 15 Counties

	2020	2021	2022	2023	2024
Jefferson*	1252	1019	1188	1161	1227
Franklin*	1084	899	961	930	799
Perry*	360	349	336	393	241
Hamilton*	259	227	230	243	207
Williamson*	124	109	125	114	115
Marion	54	67	60	92	96
Wayne*	85	74	83	87	95
Saline	37	38	46	33	71
Correctional, Out of State	57	26	17	29	70
Jackson	46	54	58	42	58
White*	41	39	30	42	44
Randolph	53	41	53	46	41
Washington*	38	30	36	43	32
Clinton	14	19	13	13	25
Mason	0	0	0	0	21

Source: ICCB A1

*Denotes counties within our district.

Enrollment by Student Level at Initial Registration for FY

	2020	2021	2022	2023	2024	5YR AVG	
Freshman	1068	837	1121	1090	1244	1072	
Sophomore	877	790	730	781	707	777	
Dual Enrollment	167	181	119	216	127	162	
Dual Credit*	842	713	760	668	633	723	
Unclassified	699	619	629	678	747	674	

*If a student was enrolled in both Dual Enrollment and Dual Credit, then the student was classified as Dual Credit.

Source: ICCB A1 Report

Student by Generation

	2020		2021		2022		2023		2024	
Student in the first generation of their family to attend college	1820	49.82%	1381	43.98%	1535	45.70%	1794	52.26%	1997	57.75%
Student not in the first generation of their family to attend college	1833	50.18%	1759	56.02%	1824	54.30%	1639	47.74%	1461	42.25%

Source: ICCB A1 Report



First-Time Freshman by Fiscal Year

	FY 2020		FY 2021		FY 2022		FY 2023		FY 2024	
	Graduated HS Spring	Graduated Prior 2019	Graduated HS Spring	Graduated Prior 2020	Graduated HS Spring	Graduated Prior 2021	Graduated HS Spring	Graduated Prior 2022	Graduated HS Spring	Graduated Prior 2023
In-District Public High Schools										
Benton	63	11	52	6	26	8	37	49	25	23
Christopher	16	8	15	7	13	4	23	24	9	7
Hamilton County	54	4	33	4	25	3	36	44	37	14
Mt. Vernon	85	19	68	23	78	1	86	115	84	32
Norris City-Omaha-Enfield	13	3	5	0	6	0	8	8	9	2
Pinckneyville	42	4	24	4	19	1	37	44	25	4
Sesser-Valier	27	8	13	2	14	0	17	23	18	8
Thompsonville	19	2	12	3	5	0	10	10	13	0
Waltonville	15	1	12	0	6	3	12	14	9	6
Wayne City	15	1	10	1	12	2	4	7	5	10
Webber Township	17	3	3	1	11	2	9	14	12	2
Woodlawn	13	0	9	0	15	2	22	26	6	3
Zeigler-Royalton	21	1	8	1	7	0	11	14	5	5
In District Total	400	65	264	52	237	26	312	392	257	116
Unknown High School Total	12	85	6	69	8	49	18	103	17	128
Out of District & Private High School Total	92	55	86	55	82	47	92	176	82	185
Home School Total	2	2	2	5	5	1	5	7	5	9
GED Completers Total	5	15	5	11	0	15	3	22	3	31

Note: Graduated HS Spring 20XX – Student graduated high school in the spring semester of that year and then started as first-time freshman that within the fiscal year. This could have been the following Summer, Fall or Spring semester during that fiscal year.

Note: Graduated Prior 20XX – Student graduated high school in prior years, but started as a first-time freshman that fiscal year. This could have been in the Summer, Fall or Spring semester for that fiscal year.

Source: RLC Custom Reports

Veteran Status

2020	2021	2022	2023	2024
115	99	73	77	73

Source: ICCB A1. Veteran Status is based on self-identification.

Enrollment by Degree/Certificate Type

Degree/Certificate Type	2020	2021	2022	2023	2024	5YR AVG	
Associate in Arts (AA) (1.1)	580	481	495	520	484	512	
Associate in Science (AS) (1.1)	342	295	227	254	205	265	
Associate in Applied Science (AAS) (1.2)	584	489	520	603	534	546	
Basic Skills (1.7, 1.8, and 1.9)	172	124	165	116	113	138	
Vocational Skills (1.6)	456	231	463	535	755	488	
Not applicable (Courses Enrollee Classification)	15	0	0	3	0	4	
Occupational Certificate of 30 Semester Hour or More (1.2)	95	102	113	133	103	109	
Occupational Certificate of 9 to Less Than 30 SemesterHours	140	162	156	151	136	149	
Occupational Certificate of Less 9 Semester Hours (1.2)	79	83	142	129	124	111	
Associate in Fine Arts (AFA) (1.1)	8	7	9	8	6	8	
Associate in Engineering Science (AES) (1.1)	18	20	11	19	9	15	
Associate of Arts in Teaching (AAT) (1.1)	0	0	0	0	0	0	

Note: These numbers do not include students who were enrolled in inactive or in curriculum codes for Dual Credit.



Enrollment by GPA

	2020		2021		2022		2023		2024		5YR AVG	
	# of Students	Percentage of Students	# of Students	Percentage of Students	# of Students	Percentage of Students	# of Students	Percentage of Students	# of Students	Percentage of Students		
Blanks	442	12.10%	297	9.46%	490	14.59%	522	15.61%	769	22.24%	504	
0	102	2.79%	91	2.90%	86	2.56%	85	2.54%	73	2.11%	87	
.01 - 1.00	84	2.30%	64	2.04%	85	2.53%	77	2.30%	47	1.36%	71	
1.01 - 2.00	295	8.08%	293	9.33%	278	8.28%	263	7.87%	255	7.37%	277	
2.01 - 3.00	1028	28.14%	858	27.32%	850	25.31%	899	26.89%	776	22.44%	882	
3.01 - 3.99	1215	33.26%	1128	35.92%	1138	33.88%	1136	33.98%	1095	31.67%	1142	
4.00	487	13.33%	409	13.03%	432	12.86%	451	13.49%	443	12.81%	444	

Note: Blanks represent students who were enrolled in classes with zero quality points or withdrew

Note: 0 GPA represents students who enrolled in courses with quality points but did not pass.

Source: ICCB A1 Report

Enrollment by Highest Degree Previously Earned

	2020	2021	2022	2023	2024	5YR AVG	
Associate Degree	334	298	274	288	264	292	
Bachelor's Degree	111	111	108	155	185	134	
Certificate	107	149	153	156	126	138	
Doctoral Degree (Ph.D., Ed.D, D.A., etc.)	6	10	5	4	5	6	
GED	99	65	102	86	115	93	
High School Diploma	1483	1338	1338	1296	1388	1369	
Master's Degree	62	62	48	83	45	60	
None (Includes high school students who have not yet graduated/received a high school diploma.)	1189	816	976	998	1026	1001	
Other	5	6	0	1	0	2	
First Professional (Dental, Law, Medical, Pharmacy, Theology, Veterinary, etc.)	5	0	4	1	1	2	
Some (Persons who successfully passed at least one college level course at another college or university but did not graduate.)	232	259	318	351	298	292	
Unknown	20	26	33	14	5	20	

Source: ICCB A1



Students attending on Chargeback/Contractual Agreements

	FISCAL YEAR 2020											
	Summer 2019				Fall 2019				Spring 2020			
	Number of Students	Number of Credit Hours	Amount	Chargeback (CH) or Cont. Agree. (CA)	Number of Students	Number of Credit Hours	Amount	Chargeback (CH) or Cont. Agree. (CA)	Number of Students	Number of Credit Hours	Amount	Chargeback (CH) or Cont. Agree. (CA)
College of DuPage	1	17		CA								
Illinois Eastern Community Colleges	274	447.5		IA*	489	693.5		IA*	785	2065.5		IA*
Illinois Eastern Community Colleges	1	6		CA	6	85		CA	6	91.5		CA
John A Logan College	1	8		CA	13	134		CA	11	137		CA
Kaskaskia College	6	38		CA	16	228.5		CA	16	217.5		CA
Shawnee Community College					1	12		CA				
Southeastern Illinois College					3	40		CA	2	33		CA
Southwestern Illinois College	1	6		CA	2	27		CA	3	23.5		CA
Total	284	512.5	\$0.00		530	1220	\$0.00		823	2568	\$0.00	
				TOTAL FY20	1637	4300.5	\$0.00					

	FISCAL YEAR 2021											
	Summer 2020				Fall 2020				Spring 2021			
	Number of Students	Number of Credit Hours	Amount	Chargeback (CH) or Cont. Agree. (CA)	Number of Students	Number of Credit Hours	Amount	Chargeback (CH) or Cont. Agree. (CA)	Number of Students	Number of Credit Hours	Amount	Chargeback (CH) or Cont. Agree. (CA)
Illinois Eastern Community Colleges	145	100.5		IA*	317	287.5		IA*	614	1204		IA*
Illinois Eastern Community Colleges	2	10.5		CA	7	58		CA	6	86		CA
John A Logan College	16	78		CA	6	53		CA	8	47		CA
Kaskaskia College	5	46		CA	10	135.5		CA	7	95.5		CA
Southeastern Illinois College									3	49		CA
Southwestern Illinois College	1	8		CA	3	24		CA	3	28		CA
Total	169	243	\$0.00		343	558	\$0.00		641	1509.5	\$0.00	
				TOTAL FY21	1153	2310.5	\$0.00					

	FISCAL YEAR 2022											
	Summer 2021				Fall 2021				Spring 2022			
	Number of Students	Number of Credit Hours	Amount	Chargeback (CH) or Cont. Agree. (CA)	Number of Students	Number of Credit Hours	Amount	Chargeback (CH) or Cont. Agree. (CA)	Number of Students	Number of Credit Hours	Amount	Chargeback (CH) or Cont. Agree. (CA)
Illinois Eastern Community Colleges	183	165.5		IA*	402	318		IA*	752	1882.5		IA*
Illinois Eastern Community Colleges					2	31		CA	2	45		CA
John A Logan College	2	15		CA	5	54		CA	5	66		CA
Kaskaskia College	2	13		CA	3	37.5		CA	2	28.5		CA
Southeastern Illinois College									1	23.5		CA
Southwestern Illinois College	1	1		CA								
Total	188	194.5	\$0.00		412	440.5	\$0.00		762	2045.5	\$0.00	
				TOTAL FY22	1362	2680.5	\$0.00					



	FISCAL YEAR 2023											
	Summer 2022				Fall 2022				Spring 2023			
	Number of Students	Number of Credit Hours	Amount	Chargeback (CH) or Cont. Agree. (CA)	Number of Students	Number of Credit Hours	Amount	Chargeback (CH) or Cont. Agree. (CA)	Number of Students	Number of Credit Hours	Amount	Chargeback (CH) or Cont. Agree. (CA)
Illinois Eastern Community Colleges	249	209.5		IA*	495	659.5		IA*	833	1458.5		IA*
Illinois Eastern Community Colleges	1	7		CA	4	69		CA	4	81		CA
John A Logan College	2	6		CA	6	51		CA	6	57		CA
Kaskaskia College	1	10		CA	10	151		CA	8	137		CA
Southeastern Illinois College	1	1.75		CA	1	19		CA				
Southwestern Illinois College					1	5		CA				
Total	254	234.25	\$0.00		517	954.5	\$0.00		851	1733.5	\$0.00	
				TOTAL FY23	1622	2922.25	\$0.00					

	FISCAL YEAR 2024											
	Summer 2023				Fall 2023				Spring 2024			
	Number of Students	Number of Credit Hours	Amount	Chargeback (CH) or Cont. Agree. (CA)	Number of Students	Number of Credit Hours	Amount	Chargeback (CH) or Cont. Agree. (CA)	Number of Students	Number of Credit Hours	Amount	Chargeback (CH) or Cont. Agree. (CA)
Illinois Eastern Community Colleges	370	551		IA*	569	819			786	1212		IA*
Illinois Eastern Community Colleges					4	65		CA	3	56		CA
John A Logan College	3	10		CA	6	53			5	47		CA
Kaskaskia College	5	31		CA	11	172		CA	11	170		CA
Lake Land College					2	24.5		CA	1	13.5		CA
Southeastern Illinois College												
Southwestern Illinois College												
Total	378	592	\$0.00		592	1133.5	\$0.00		806	1498.5	\$0.00	
				TOTAL FY24	1776	3224	\$0.00					

*Attending per special inter-district arrangements between community college presidents.

Contractual Agreement Totals

	FY 2020	FY 2021	FY 2022	FY 2023	FY 2024	5YR AVG	
Number of Students	1637	1153	1362	1622	1776	1510	
Number of Credit Hours	4300.5	2310.5	2680.5	2922.25	3224	3087.55	

Source: Kristina Shelton



Section IV: Finances & Financial Aid



Finances

Revenue & Expenses

Revenue	FY 2020	FY 2021	FY 2022	FY 2023	FY 2024	5YR AVG	
Gross Tuition & Fee Revenue	\$ 7,889,321	\$ 6,647,255	\$ 6,941,830	\$ 7,497,371	\$ 7,395,643	\$ 7,274,284	
State Government Revenue	\$ 7,156,353	\$ 7,139,271	\$ 7,042,205	\$ 6,832,014	\$ 7,375,005	\$ 7,108,970	
Real Estate Tax Rate	0.6363	0.6260	0.5938	0.5633	0.5904	0.60196	
Total Operating Revenue (all sources)	\$ 21,183,431	\$ 21,687,132	\$ 22,046,523	\$ 23,264,502	\$ 22,221,516	\$ 22,080,621	
Expenses	FY 2020	FY 2021	FY 2022	FY 2023	FY 2024	5YR AVG	
Total Operating Salaries & Benefits	\$ 11,630,456	\$ 11,324,152	\$ 11,802,384	\$ 10,546,246	\$ 11,611,078	\$ 11,382,863	
Total Operating Expenses	\$ 18,612,537	\$ 17,455,501	\$ 19,121,419	\$ 16,815,847	\$ 18,139,929	\$ 18,029,047	

Fiscal Year Breakdown

FY 2024 Breakdown	
Operating Revenue by Source	
Local Government	\$ 4,384,776
State Government	\$ 7,375,005
Tuition & Fees	\$ 6,982,230
Sales & Service	\$ 65,424
Facilities Revenue	\$ 17,781
Other	\$ 663,669
TOTAL	\$ 19,488,885
Operating Expenses by Object	
Salaries	\$ 9,542,182
Benefits	\$ 2,068,896
Contractual	\$ 1,162,765
Materials/Supplies	\$ 1,100,079
Travel	\$ 199,815
Fixed Charges	\$ 28,593
Utilities	\$ 923,345
Capital Outlay	\$ 115,849
Other	\$ 2,562,981
TOTAL	\$ 17,704,503
Operating Expenses by Function	
Instruction	\$ 5,608,285
Academic Support	\$ 759,017
Student Services	\$ 1,199,862
Public Services	\$ 83,912
Operation/Maintenance	\$ 2,891,533
Institutional Support	\$ 4,578,092
Scholarships/Grants	\$ 2,583,802
TOTAL	\$ 17,704,503

Source: Business Office



Financial Aid

Financial Aid by Award Type

	Award Year 2020	Number of Recipients	Award Year 2021	Number of Recipients	Award Year 2022	Number of Recipients	Award Year 2023	Number of Recipients	Award Year 2024	Number of Recipients
FEDERAL PROGRAMS										
PELL	\$3,165,066	830	\$2,576,102	652	\$2,667,470	653	\$2,688,239	651	\$3,172,652	689
SEOG	\$60,985	131	\$63,600	105	\$69,800	159	\$74,700	168	\$49,131	108
Federal Direct Loan Program	\$0	0	\$0	0	\$0	0	\$0	0	\$0	0
Post 9/11 GI Bill	\$68,343	25	\$75,196	25	\$37,804	14	\$35,192	12	\$37,587	15
Federal Work Study	\$55,605	33	\$39,703	16	\$28,183	17	\$37,847	17	\$55,614	25
CARES	\$591,132	560	\$591,132	505						
CARES2	\$188,200	252	\$103,923	249						
ARP					\$2,417,082	567	\$18,264	492		
Total Federal Programs	\$4,129,331	1831	\$3,449,656	1552	\$5,220,339	1,410	\$2,854,242	1340	\$3,314,984	837
STATE PROGRAMS										
MAP	\$544,993	487	\$528,614	482	\$652,472	537	\$762,490	533	\$854,605	531
Senior Citizens Waivers	\$24,072	153	\$17,988	100	\$20,008	77	\$14,785	73	\$18,370	63
Dept. of Rehabilitation Grants (DORS)	\$59,548	16	\$48,753	13	\$62,867	18	\$99,906	23	\$71,127	18
National Guard Grants	\$14,921	9	\$13,285	8	\$12,815	6	\$4,185	2	\$8,855	3
Illinois Veterans Grants	\$34,781	17	\$27,074	10	\$14,451	9	\$17,353	8	\$9,579	6
Dependents of Veterans Scholarships	\$27,885	10	\$37,950	12	\$23,815	10	\$27,665	12	\$21,725	11
Illinois Veterans Grants (Tuition Waivers)	\$6,175	5	\$1,950	1	\$0	0	\$0	0		
National Guard Grants (Tuition Waivers)	\$2,730	2	\$0	0	\$0	0	\$0	0		
Workforce Incentive Act (WIA)	\$96,500	35	\$160,329	49	\$124,144	36	\$150,189	41	\$39,195	14
Total State Programs	\$811,605	734	\$835,943	675	\$910,572	693	\$1,076,573	692	\$1,023,456	646
INSTITUTIONAL PROGRAMS										
Staff Tuition Wavier	\$99,247	58	\$83,750	54	\$99,557	43	\$77,824	36	\$52,835	39
Talent Waivers (Academic/Athletic)	\$720,421	208	\$346,100	142	\$526,959	155	\$585,488	156	\$611,917	153
Student Employment	\$46,868	24	\$18,328	12	\$77,166	31	\$150,121	40	\$106,457	46
Total Institutional Programs	\$866,536	290	\$448,178	208	\$626,516	229	\$813,433	232	\$771,209	238

Source: RLC Financial Aid Office



Financial Aid – IPEDS Report

Total grant aid awarded to all undergraduate students	\$6,979,746.00
Number of undergraduate students who were awarded a Pell Grant	625
Percentage of Full-Time, First-Time students who were awarded any financial aid	86%

	Percentage of FTFT students who were awarded grant aid by type	Average amount of grant aid awarded by type
Total	77%	\$5,923.00
Federal Government	44%	\$5,604.00
Pell	43%	\$5,035.00
Other Federal	44%	\$682.00
State/Local Government	40%	\$2,472.00
Institutional	45%	\$2,446.00

	Percentage of FTFT students who were awarded and accepted loans by type	Average amount of loans awarded and accepted by type
Total	3%	\$6,211.00
Federal	0%	NA
Non-federal	3%	\$6,211.00

Average net price for FTFT students who were awarded	\$8,518.00
Average net price for FTFT students who were awarded Title IV federal student aid	
\$0 - 30,000	\$6,369.00
\$30,001 - 48,000	\$6,411.00
\$48,001 - 75,000	\$9,607.00
\$75,001 - 110,000	\$12,191.00
\$110,001 and more	NA

Military Service members and Veteran's Benefits		
	Number of students receiving benefits/assistance	Total dollar amount of benefits/assistance awarded through the institution
Post-9/11 GI Benefits		
Undergraduate students	12	\$35,192
Department of Defense Tuition Assistance Program		
Undergraduate students	0	NA

Source: IPEDS – Financial Aid FY 2024



Section V: Retention, Completion and Graduation Rates



Retention, Graduation Rates, and Completions

Retention Rates

	Full-Time, First-Time	Part-Time, First-Time
Fall 2014	66%	51%
Fall 2015*	70%	50%
Fall 2016	59%	46%
Fall 2017	65%	50%
Fall 2018	69%	48%
Fall 2019	63%	38%
Fall 2020	66%	45%
Fall 2021	65%	41%
Fall 2022	68%	40%

* 2015(FY16) rates included students who graduated in the summer; 2016 and forward do not count these students.

Source: IPEDS Fall Enrollment Reports

Fall to Fall Adjusted Retention Rates

Rend Lake College	Fall 2017	Fall 2018	Fall 2019	Fall 2020	Fall 2021
First-Time, Full-Time Entering Cohort	505	470	444	328	344
Returned	283	291	244	199	204
Completed Year 1	47	34	34	17	21
Not Returned, Not Completed	175	145	166	112	119
Returned or Completed	330	325	278	216	225
Adjusted Retention	65.3%	69.1%	62.6%	65.9%	65.4%

State of Illinois	Fall 2017	Fall 2018	Fall 2019	Fall 2020	Fall 2021
First-Time, Full-Time Entering Cohort	27,692	26,803	27,477	23,274	23,473
Returned	17,902	17,261	17,106	14,826	15,056
Completed Year 1	523	534	572	480	580
Not Returned, Not Completed	9,267	9,008	9,799	7,968	7,837
Returned or Completed	18,425	17,795	17,678	15,306	15,636
Adjusted Retention	66.5%	66.4%	64.3%	65.8%	66.6%

Source: ICCB Centralized Data Systems - <https://www2.iccb.org/data/studies-reports/recently-added-reports/>



Graduation Rates

Graduation Rates from IPEDS Graduations Rates and GR200 Survey Full-Time, First-Time Degree/Certificate Seeking			
Cohort Year	100% Graduation Rates	150% Graduation Rates	200% Graduation Rates
Fall 2014	41%	58%	60%
Fall 2015	46%	61%	63%
Fall 2016	37%	53%	54%
Fall 2017	41%	56%	58%
Fall 2018	45%	59%	61%
Fall 2019	43%	56%	56%
Fall 2020	47%	60%	

Source: IPEDS Graduation Rates Reports



Completions

Completions by Gender & Ethnicity

	2020		2021*		2022		2023		2024	
	Male	Female	Male	Female	Male	Female	Male	Female	Male	Female
	54%	46%	51%	49%	47%	53%	53%	47%	49%	51%
Asian	0.90%		0.50%		0.70%		0.33%		1.24%	
American Indian or Alaska Native	0.00%		0.40%		0.80%		0.13%		0.00%	
Black or African American	4.25%		4.30%		4.90%		3.82%		3.71%	
Hispanic or Latino	1.23%		1.80%		1.90%		2.17%		1.89%	
White	93.38%		94.20%		93.25%		91.44%		89.37%	
Nonresident Alien	0.08%		0.00%		0.00%		0.00%		0.00%	
Islander	0.00%		0.10%		0.50%		0.07%		0.33%	
Two or More	0.00%		0.00%		0.00%		2.04%		2.97%	
Unknown	0.16%		0.00%		0.00%		0.00%		0.49%	

*For the 2021 A2 Report, prime ethnicity is no longer used. Students are duplicated.

Completions by Term

	FY2020	FY2021	FY2022	FY2023	FY2024
Summer	222	171	199	143	156
Fall	239	273	223	195	298
Spring	762	697	823	1181	760
Total	1223	1141	1245	1519	1214

Students Completed a Certificate or Degree

FY2020	FY2021	FY2022	FY2023	FY2024
629	595	697	833	690

Note: Spring 2023 – Auto-Award to complete students that did not apply for graduation but met the graduation requirements for degrees or certificates.

Completions by Degree/Certificate Type

Degree/Certificate Type	2020	2021	2022	2023	2024
Associate in Arts (AA) (1.1)	199	181	161	151	161
Associate in Science (AS) (1.1)	144	140	116	145	108
Associate in Applied Science (AAS) (1.2)	194	152	179	180	189
Occupational Certificate of 30 Semester Hours or More (1.2)	94	119	147	174	125
Occupational Certificate of 9 to Less than 30 Semester Hours	246	221	256	447	278
Occupational Certificate of Less 9 Semester Hours (1.2)	139	139	231	258	194
Associate in Fine Arts (AFA) (1.1)	5	2	3	4	3
Associate in Engineering Science (AES) (1.1)	10	7	3	7	3
Associate of Arts in Teaching (AAT) (1.1)	0	0	0	0	0
General Education Core Curriculum Credential (GECC)	192	180	149	153	153

Source: ICCB A2 Completions Report



Completion Detail by Degree/Certificate Type

PREFIX	NUMBER	CURRICULUM TITLE	PCS	CIP	ID	CURR HOURS	BEG DATE	STATUS	2020	2021	2022	2023	2024
AA	100	ASSOCIATE IN ARTS	11	240101	1	64	8231982	A	199	181	161	151	161
ACP	105	COMPUTER PROGRAMMING	12	110201	3	64	1012007	A	8	2	1	0	0
ADN	3	ASSOCIATE DEGREE NURSING	12	513801	3	64	8012014	A	39	25	43	28	49
AFA	800	ASSOCIATE IN FINE ARTS	11	500702	50	64	8212001	A	1	2	2	1	2
AFA	801	AFA MUSIC PERFORMANCE-INSTRU. OPTION	11	500901	50	64	9282010	A	0	0	1	2	1
AFA	802	AFA MUSIC PERFORMANCE-VOCAL OPTION	11	500901	50	64	9282010	A	4	0	0	1	0
AGRI	4	AGRICULTURAL BUSINESS	12	10101	3	68	8012009	A	14	18	10	19	9
AGRI	5	AGRICULTURAL MECHANICS	12	10201	20	27	8202002	A	10	9	14	24	21
AGRI	6	AGRICULTURAL MECHANICS	12	10201	3	72	8012009	A	11	6	7	12	17
AGRI	7	AGRICULTURAL PRODUCTION & MANAGEMENT	12	10301	20	30	5151992	A	6	7	6	7	4
AGRI	8	AGRICULTURAL PRODUCTION & MANAGEMENT	12	10301	3	71	8012009	A	4	7	6	6	4
ARCH	9	COMPUTER AIDED DRAFTING	12	151302	30	11	8011998	A	0	0	0	0	0
AS	200	ASSOCIATE IN SCIENCE	11	300101	2	64	4302010	A	144	140	116	145	108
AUTO	12	AUTOMOTIVE TECHNOLOGY	12	470604	20	50	8011998	A	5	14	5	8	4
AUTO	13	AUTOMOTIVE TECHNOLOGY	12	470604	3	69	8152000	A	3	6	3	5	2
AUTO	89	AUTOMOTIVE ENGINE REPAIR	12	470604	30	7	6202000	A	12	7	8	24	4
AUTO	90	AUTOMOTIVE BRAKE	12	470604	30	6	6202000	A	13	8	5	13	2
AUTO	91	AUTOMOTIVE TRANSMISSION	12	470604	30	10	6202000	A	3	17	6	7	4
AUTO	92	AUTOMOTIVE AIR CONDITIONING	12	470604	30	5	6202000	A	12	7	8	17	2
AUTO	93	AUTOMOTIVE ELECTRICAL	12	470604	30	6	6202000	A	5	14	7	7	6
AUTO	94	AUTOMOTIVE SUSPENSION AND STEERING	12	470604	30	6	6202000	A	8	12	9	9	4
AUTO	197	FORD MLR CERTIFICATE	12	470604	30	18	7262011	A	0	0	0	0	0
BME	1	BIOMEDICAL ELECTRONICS	12	150401	3	64	3012016	A	1	0	0	0	0
BUSI	1	BUSINESS MANAGEMENT	12	520101	30	16	2022017	A	1	4	10	4	5
BUSI	2	BUSINESS MANAGEMENT II	12	520101	20	31	2012017	A	1	3	10	3	6
BUSI	3	ENTREPRENEURSHIP	12	520101	30	13	1052018	A	5	8	17	9	22
BUSI	4	HUMAN RESOURCE ASSOCIATE	12	520101	30	19	4192019	A	0	1	3	0	1
BUSI	5	FINANCIAL ASSOCIATE	12	520101	30	18	4192019	A	0	2	2	0	0
BUSI	17	BUSINESS	12	520101	3	64	1032017	A	2	2	11	5	6
CMA	1	CERTIFIED MEDICAL ASSISTANT	12	510801	3	66	12022014	A	2	7	3	4	3
CMA	2	CERTIFIED MEDICAL ASSISTANT	12	510801	20	36	11212014	A	7	16	5	8	5
CNS	1	WINDOWS	12	151201	30	11	3042014	A	8	8	8	8	4
CNS	2	LINUX NETWORKING	12	151202	30	12	1092014	A	7	7	8	7	5
CNS	3	CYBER SECURITY SPECIALIST	12	111003	30	19	6152015	A	8	8	8	7	5
CNS	4	IT DATABASE SPECIALIST	12	111003	3	64	01/01/2020	A	0	0	1	0	0
CNS	5	IT SECURITY SPECIALIST	12	111003	3	67	5172018	A	3	9	1	5	3
CNS	79	IT SYSTEMS SPECIALIST	12	151202	3	67	8012012	A	2	1	9	0	0
CNS	80	COMPUTER NETWORKING CERTIFICATE	12	110901	30	14	7012015	A	8	6	10	14	7
CNS	82	PC MAINTENANCE	12	151203	30	8	1012014	A	9	9	8	0	7
CNS	83	PC MAINTENANCE CERTIFICATE	12	151201	30	15	7012012	I	0	0	0	0	0
COSM	1	NAIL TECHNOLOGY	12	120410	30	16	4302013	A	0	0	1	1	2
COSM	2	BARBER	12	120402	20	50	9192014	A	1	6	2	8	4
COSM	3	BARBER	12	120402	3	65	2032015	A	0	0	0	0	0



PREFIX	NUMBER	CURRICULUM TITLE	PCS	CIP	ID	CURR HOURS	BEG DATE	STATUS	2020	2021	2022	2023	2024
COSM	4	COSMETOLOGY	12	120401	3	65	2032015	A	1	0	2	3	0
COSM	5	ESTHETICS	12	120409	20	30.5	6052015	A	7	0	14	15	12
COSM	6	COSMETOLOGY TEACHER 500 HR TRAINING	12	120413	30	19	11052015	A	0	0	0	0	0
COSM	7	BARBER TEACHER 1000 HR TRAINING	12	120413	20	37	11202015	A	0	0	0	0	0
COSM	8	BARBER TEACHER 500 HR TRAINING	12	120413	30	19	11052015	A	0	0	0	1	11
COSM	122	COSMETOLOGY	12	120401	20	50	9012011	A	6	8	6	13	0
COSM	130	COSMETOLOGY TEACHER 1000 HR TRAINING	12	120413	20	37	11202015	A	0	0	0	0	11
CRJS	1	CYBER FORENSICS SPECIALIST	12	430107	20	24	3212014	A	0	0	0	0	0
CRJS	39	CRIMINAL JUSTICE	12	430107	3	64	6011992	A	9	7	11	5	11
CRJS	98	POLICE SCIENCE	12	430107	30	12	11202000	A	0	0	0	0	0
CRJS	99	CORRECTIONS	12	430102	30	12	11202000	A	0	0	6	10	13
CRJS	110	PRIVATE PROTECTION	12	430107	30	12	7012007	A	0	0	3	4	5
CSCI	62	IT SYSTEMS ASSISTANT	12	520401	3	65	1012007	A	0	0	0	0	0
CSCI	119	PROGRAMMING WITH VISUAL BASIC	12	110202	30	9	3212003	A	1	0	0	4	1
CSCI	128	MICROSOFT USER CERTIFICATE	12	520401	30	15	10162003	A	0	1	0	0	3
CULA	64	CULINARY ARTS MANAGEMENT	12	120503	3	70.0 R	7012010	A	4	8	10	5	5
CULA	189	CULINARY ARTS CERTIFICATE	12	120503	30	27	7012013	A	4	8	12	8	10
CULA	190	BAKING & PASTRY ARTS CERTIFICATE	12	120501	30	28	7012013	A	1	0	1	5	2
DIEL	107	DIESEL TECHNOLOGY	12	10205	3	66	1012004	A	15	7	9	13	20
DIEL	113	DIESEL TECHNOLOGY	12	470605	20	30	6012011	A	14	11	18	21	21
ECE	1	TECHNICAL ASSISTANCE CREDENTIAL	12	190709	30	16	6012017	A	0	0	1	0	0
ECE	2	EARLY CHILDHOOD EDUCATION	12	190709	20	30	12192017	A	1	1	5	12	9
ECE	70	EARLY CHILDHOOD EDUCATION	12	190709	3	67	10012010	A	1	2	5	3	5
ECE	138	EARLY CHILDHOOD ASSISTANT	12	190709	30	6	6222004	A	4	1	4	27	15
ECE	590	EARLY CHILDHOOD CERTIFICATE-LEVEL 2	12	190709	30	12	4092010	A	3	2	5	20	11
ECE	595	EARLY CHILDHOOD CERTIFICATE-LEVEL 3	12	190709	30	27	4192010	A	1	2	5	4	6
EMT	1	EMERGENCY MEDICAL TECHNICIAN BASIC	12	510904	30	9	11032014	A	10	5	1	20	4
EMTP	120	EMT PARAMEDIC	12	510904	3	68	8012015	A	0	3	1	1	0
EMTP	121	EMT PARAMEDIC CERTIFICATE	12	510904	20	45	6012012	A	3	4	0	7	9
ENGR	77	ASSOCIATE ENGINEERING SCIENCE	11	140101	51	68	8012014	A	10	7	3	7	3
GECC	1	GEN ED CORE CURRICULUM CREDENTIAL	11	240101	53	37	2222019	A	-	180	149	153	153
GFM	1	GREEN FACILITIES MANAGEMENT	12	150503	30	16	7132012	A	0	0	0	0	0
GRD	1	GRAPHIC WEB DESIGN CERTIFICATE	12	500409	30	18	5022012	A	4	1	0	2	1
GRD	2	GRAPHIC TECHNICIAN	12	500409	20	37	7012019	A	4	0	0	4	2
GRD	3	MOTION DESIGN	12	500409	20	30	4192019	A	-	1	0	8	4
GRD	84	GRAPHIC DESIGN	12	500409	3	67	7012007	A	6	1	2	3	4
GRD	85	GRAPHIC DESIGN CERTIFICATE	12	500409	20	31	12012010	A	2	1	1	4	4
HEQT	86	HEAVY EQUIPMENT TECHNOLOGY	12	470302	30	29	2222019	A	10	6	12	20	16
HEQT	87	HEAVY EQUIPMENT TECHNOLOGY	12	470302	3	72	12012010	A	12	3	6	13	14
IST	1	ROBOTS AND AUTOMATION CERTIFICATE	12	470303	30	18	7062016	A	21	16	10	17	14
IST	2	INDUSTRIAL MAINTENANCE MULTI TECH	12	470303	30	20	9172018	A	15	16	11	16	14



PREFIX	NUMBER	CURRICULUM TITLE	PCS	CIP	ID	CURR HOURS	BEG DATE	STATUS	2020	2021	2022	2023	2024
IST	35	IND ELECTRONICS & MAINTENANCE TECH	12	470303	3	72	8012005	A	19	16	9	18	15
IST	37	INDUSTRIAL MAINTENANCE TECHNICIAN	12	470303	30	28	7012003	A	19	16	11	20	15
IST	137	PROGRAMMABLE LOGIC CONTROLLER	12	470105	30	20	11172004	A	22	15	11	18	24
LPN	40	PRACTICAL NURSING	12	513901	20	39	12012015	A	28	36	56	31	27
MACH	136	BASIC MACHINING CERTIFICATE	12	480501	30	18	8012012	A	1	0	3	1	0
MEDC	1	MEDICAL CODING CERTIFICATE	12	510713	30	29	7012014	A	8	7	15	16	9
MFG	1	MANUFACTURING TECHNOLOGY	12	150613	3	64	10152012	A	1	0	2	0	0
MFG	2	MANUFACTURING TECHNOLOGY	12	150405	20	32	11272012	A	0	0	1	0	0
MFG	3	CERTIFIED PRODUCTION TECHNICIAN	12	150613	30	16	6032015	A	1	0	2	6	1
MSS	1	MEDICAL SUPPORT SPECIALIST	12	510710	30	16	6302019	A	1	2	4	0	0
NURA	45	BASIC NURSING ASSISTANT TRAINING	12	513902	30	7	8012012	A	71	49	128	116	99
OFTC	1	OFFICE TECHNOLOGIES ASSISTANT	12	520401	20	30	6032016	A	0	1	0	1	1
PCA	1	PERSONAL CARE AIDE	12	512602	30	16	11032014	A	0	0	0	17	4
PHAR	1	PHARMACY TECHNICIAN	12	510805	30	16	2252015	A	0	0	0	3	0
PHLE	1	PHLEBOTOMY	12	511009	30	16	5022012	A	4	12	9	15	9
RAD	147	RADIOLOGIC TECHNOLOGY	12	510907	3	69.5	8012015	A	22	18	18	22	21
RAD	159	COMPUTED TOMOGRAPHY	12	510907	30	16	1012010	A	0	0	1	0	1
RAD	160	MRI CERTIFICATE	12	510907	30	16	1272012	A	0	0	0	0	0
TRUK	1	TRUCK DRIVER TRAINING	12	490205	30	7	5022012	A	5	32	54	28	55
TRUK	2	HEAVY EQUIPMENT TRANSPORTATION	12	470605	30	26	5022012	A	0	1	1	0	0
UAS	1	UNMANNED AIRCRAFT SYSTEMS	12	150303	30	9	9302015	A	1	0	1	2	0
VET	1	VETERINARY ASSISTANT	12	510808	30	17	3212017	A	10	8	5	9	5
WELD	56	WELDING TECHNOLOGY	12	480508	30	24	7012003	A	14	10	11	32	7
WELD	57	PIPE WELDING TECHNOLOGY	12	480508	30	12	7012003	A	11	4	9	16	7
WELD	117	WELDING FUNDAMENTALS	12	480508	30	12	1072003	A	13	15	13	49	9
WELD	118	ADVANCED WELDING TECHNIQUES	12	480508	30	12	1072003	A	14	7	11	32	6
WELD	135	ADVANCED METAL WORKING CERTIFICATE	12	480508	30	19	11172004	A	16	5	11	23	7
WELD	158	WELDING TECHNOLOGY	12	480508	3	65	9192008	A	14	1	9	8	1

Source: ICCB A2 Completion Reports



Student Outcome Measures

	2020					2021					2022					2023				
	4-Year Award Rate	6-Year Award Rate	8-Year Award Rate	Still Enrolled at Your Instruction after 8 Years	Did Not Receive an Award and Subsequently Enrolled at Another Institution	4-Year Award Rate	6-Year Award Rate	8-Year Award Rate	Still Enrolled at Your Instruction after 8 Years	Did Not Receive an Award and Subsequently Enrolled at Another Institution	4-Year Award Rate	6-Year Award Rate	8-Year Award Rate	Still Enrolled at Your Instruction after 8 Years	Did Not Receive an Award and Subsequently Enrolled at Another Institution	4-Year Award Rate	6-Year Award Rate	8-Year Award Rate	Still Enrolled at Your Instruction after 8 Years	Did Not Receive an Award and Subsequently Enrolled at Another Institution
First-Time Entering																				
Full Time	55%	57%	58%	0%	20%	55%	56%	56%	0%	22%	60%	61%	61%	0%	18%	63%	65%	65%	1%	14%
Pell Grant Recipients	49%	50%	51%	1%	24%	42%	43%	44%	0%	27%	51%	52%	53%	0%	21%	55%	57%	57%	2%	16%
Non-Pell Grant Recipients	53%	65%	66%	0%	16%	68%	69%	70%	0%	18%	70%	71%	71%	0%	16%	71%	72%	72%	0%	13%
Part-Time	45%	47%	47%	0%	18%	34%	37%	37%	1%	20%	46%	47%	47%	1%	19%	41%	43%	43%	0%	19%
Pell Grant Recipients	35%	36%	36%	1%	20%	23%	26%	26%	0%	17%	29%	31%	31%	0%	27%	36%	39%	39%	0%	12%
Non-Pell Grant Recipients	50%	51%	51%	0%	17%	40%	43%	43%	2%	22%	57%	58%	58%	1%	14%	43%	44%	44%	0%	21%
Non-First-Time Entering																				
Full Time	41%	41%	41%	0%	36%	62%	62%	62%	1%	25%	54%	54%	54%	0%	27%	55%	55%	55%	0%	29%
Pell Grant Recipients	39%	39%	39%	0%	39%	53%	53%	53%	3%	25%	52%	52%	52%	0%	28%	53%	53%	53%	0%	28%
Non-Pell Grant Recipients	45%	4%	45%	0%	27%	68%	68%	68%	0%	24%	58%	58%	58%	0%	25%	56%	56%	56%	0%	29%
Part-Time	34%	34%	34%	0%	36%	40%	40%	40%	2%	29%	37%	37%	40%	0%	33%	45%	45%	47%	0%	22%
Pell Grant Recipients	38%	38%	38%	0%	25%	42%	42%	42%	5%	26%	24%	24%	24%	0%	40%	25%	25%	25%	0%	35%
Non-Pell Grant Recipients	33%	33%	33%	0%	40%	39%	39%	39%	0%	30%	44%	44%	49%	0%	29%	55%	55%	57%	0%	16%
Total Entering	52%	53%	54%	0%	21%	51%	52%	52%	0%	23%	55%	56%	57%	0%	21%	57%	59%	59%	1%	17%
Pell Grant Recipients	46%	47%	48%	1%	24%	41%	42%	42%	1%	25%	47%	48%	48%	0%	24%	51%	52%	53%	1%	18%
Non-Pell Grant Recipients	57%	58%	59%	0%	18%	59%	60%	61%	0%	21%	64%	65%	65%	0%	18%	62%	63%	64%	0%	16%

Transfer Rates

Rend Lake College	FY 18	FY 19	FY 20	FY 21
Associate Transfer Degree Completers	174	179	222	198
Transferred - Illinois Colleges	76	72	96	80
Transferred - Out-of-State	49	51	46	37
Transferred - Both Illinois and Out-Of-State	0	1	3	3
Total Number of Transfers	125	124	145	120

State of Illinois	FY 18	FY 19	FY 20	FY 21
Associate Transfer Degree Completers	20,649	20,021	19,136	19,009
Transferred - Illinois Colleges	9,671	9,448	8,993	8,968
Transferred - Out-of-State	2,455	2,314	2,289	2,407
Transferred - Both Illinois and Out-Of-State	143	124	105	157
Total Number of Transfers	12,269	11,886	11,387	11,532
Rate - Total Transferred	59.4%	59.4%	59.5%	60.7%

Source: ICCB Centralized Data System - <https://www2.iccb.org/data/studies-reports/recently-added-reports/>



Section VI - Student Consumer Information

Security Report

CRIMINAL OFFENSE REPORTING TABLE					
OFFENSE	YEAR	GEOGRAPHIC LOCATION			
		ON-CAMPUS PROPERTY	ON-CAMPUS STUDENT HOUSING FACILITIES	NONCAMPUS PROPERTY	PUBLIC PROPERTY
MURDER/NON-NEGLIGENT MANSLAUGHTER	2023	0	0	0	0
	2022	0	0	0	0
	2021	0	0	0	0
MANSLAUGHTER BY NEGLIGENCE	2023	0	0	0	0
	2022	0	0	0	0
	2021	0	0	0	0
RAPE	2023	0	0	0	0
	2022	0	0	0	0
	2021	0	0	0	0
FONDLING	2023	0	0	0	0
	2022	0	0	0	0
	2021	0	0	0	0
INCEST	2023	0	0	0	0
	2022	0	0	0	0
	2021	0	0	0	0
STATUTORY RAPE	2023	0	0	0	0
	2022	0	0	0	0
	2021	0	0	0	0
ROBBERY	2023	0	0	0	0
	2022	0	0	0	0
	2021	0	0	0	0
AGGRAVATED ASSAULT	2023	0	0	0	0
	2022	0	0	0	0
	2021	0	0	0	0
BURGLARY	2023	0	0	0	0
	2022	0	0	0	0
	2021	0	0	0	0
MOTOR VEHICLE THEFT	2023	0	0	0	0
	2022	0	0	0	0
	2021	0	0	0	0
ARSON	2023	0	0	0	0
	2022	0	0	0	0
	2021	0	0	0	0



VAWA OFFENSE REPORTING TABLE					
OFFENSE	YEAR	GEOGRAPHIC LOCATION			
		ON-CAMPUS PROPERTY	ON-CAMPUS STUDENT HOUSING FACILITIES	NONCAMPUS PROPERTY	PUBLIC PROPERTY
DOMESTIC VIOLENCE	2023	0	0	0	0
	2022	0	0	0	0
	2021	0	0	0	0
DATING VIOLENCE	2023	0	0	0	0
	2022	0	0	0	0
	2021	0	0	0	0
STALKING	2023	0	0	0	0
	2022	0	0	0	0
	2021	0	0	0	0

ARRESTS AND DISCIPLINARY REFERRALS REPORTING TABLE					
OFFENSE	YEAR	GEOGRAPHIC LOCATION			
		ON-CAMPUS PROPERTY	ON-CAMPUS STUDENT HOUSING FACILITIES	NONCAMPUS PROPERTY	PUBLIC PROPERTY
ARRESTS: WEAPONS: CARRYING, POSSESSING, ETC.	2023	0	0	0	0
	2022	0	0	0	0
	2021	0	0	0	0
DISCIPLINARY REFERRALS: WEAPONS: CARRYING, POSSESSING, ETC.	2023	0	0	0	0
	2022	0	0	0	0
	2021	0	0	0	0
ARRESTS: DRUG ABUSE VIOLATIONS	2023	0	0	0	0
	2022	0	0	0	0
	2021	0	0	0	0
DISCIPLINARY REFERRALS: DRUG ABUSE VIOLATIONS	2023	0	0	0	0
	2022	0	0	0	0
	2021	0	0	0	0
ARRESTS: LIQUOR LAW VIOLATIONS	2023	0	0	0	0
	2022	0	0	0	0
	2021	0	0	0	0
DISCIPLINARY REFERRALS: LIQUOR LAW VIOLATIONS	2023	0	0	0	0
	2022	0	0	0	0
	2021	0	0	0	0



Student Right to Know

Enrolled Student Diversity, Completion, and Transfer-Out Rates for All Students and Scholarship Athletes

	Fall 2023 Cohort Enrollment			Fall 2020 Cohort Completion Rate			Fall 2018-2020 Cohorts Average Completion Rate			Fall 2020 Cohort Transfer-Out Rate			Fall 2018-2020 Cohorts Average Transfer-Out Rate			
	Female	Male	Total	Female	Male	Total	Female	Male	Total	Female	Male	Total	Female	Male	Total	
All Students	Total	371	521	892	61%	59%	60%	60%	56%	60%	1100%	13%	12%	10%	12%	11%
	Asian	2	-	2	-	-	-	-	-	-	-	-	-	-	-	-
	American Indian or Alaska Native	1	3	4	-	-	-	-	-	-	-	-	-	-	-	-
	Black or African American	24	45	69	-	-	-	50%	38%	42%	-	-	-	-	31%	26%
	Hispanic or Latino	12	7	19	-	-	-	-	-	-	-	-	-	-	-	-
	White	330	462	792	-	-	-	63%	60%	59%	-	-	-	9%	11%	10%
	Nonresident Alien	-	-	-	-	-	-	-	-	-	-	-	-	-	-	-
	Native Hawaiian or Other Pacific Islander	-	-	-	-	-	-	-	-	-	-	-	-	-	-	-
	Two or more races	-	-	-	-	-	-	-	-	-	-	-	-	-	-	-
	Unknown	-	-	-	-	-	-	-	-	-	-	-	-	-	-	-
	Recipients of a Federal Pell Grant	-	-	-	46%	48%	47%	50%	50%	50%	17%	16%	17%	10%	13%	12%
	Recipients of a subsidized Stafford Loan (who did not receive a Pell Grant)	-	-	-	-	-	-	-	-	-	-	-	-	-	-	-
	Students who did Not receive either a Pell Grant OR a subsidized Stafford Loan	-	-	-	76%	67%	71%	71%	61%	66%	6%	11%	8%	10%	13%	12%
Basketball	Total	10	10	20	-	-	-	-	-	-	-	-	-	-	86%	58%
	Asian	-	-	-	-	-	-	-	-	-	-	-	-	-	-	-
	American Indian or Alaska Native	-	-	-	-	-	-	-	-	-	-	-	-	-	-	-
	Black or African American	6	-	10	-	-	-	-	-	-	-	-	-	-	86%	100%
	Hispanic or Latino	-	-	-	-	-	-	-	-	-	-	-	-	-	-	-
	White	4	-	10	-	-	-	-	-	-	-	-	-	-	-	-
	Nonresident Alien	-	-	-	-	-	-	-	-	-	-	-	-	-	-	-
	Native Hawaiian or Other Pacific Islander	-	-	-	-	-	-	-	-	-	-	-	-	-	-	-
	Two or more races	-	-	-	-	-	-	-	-	-	-	-	-	-	-	-
	Unknown	-	-	-	-	-	-	-	-	-	-	-	-	-	-	-
Baseball	Total	16	-	16	-	67%	67%	-	84%	84%	-	-	-	-	-	-
	Asian	-	-	-	-	-	-	-	-	-	-	-	-	-	-	-
	American Indian or Alaska Native	-	-	-	-	-	-	-	-	-	-	-	-	-	-	-
	Black or African American	-	-	-	-	-	-	-	-	-	-	-	-	-	-	-
	Hispanic or Latino	-	-	-	-	-	-	-	-	-	-	-	-	-	-	-
	White	-	6	10	-	67%	67%	-	84%	84%	-	-	-	-	-	-
	Nonresident Alien	-	-	-	-	-	-	-	-	-	-	-	-	-	-	-
	Native Hawaiian or Other Pacific Islander	-	-	-	-	-	-	-	-	-	-	-	-	-	-	-
	Two or more races	-	-	-	-	-	-	-	-	-	-	-	-	-	-	-
	Unknown	-	-	-	-	-	-	-	-	-	-	-	-	-	-	-
Cross Country and Track	Total	-	-	-	-	-	-	-	-	-	-	-	-	-	-	-
	Asian	-	-	-	-	-	-	-	-	-	-	-	-	-	-	-
	American Indian or Alaska Native	-	-	-	-	-	-	-	-	-	-	-	-	-	-	-
	Black or African American	-	-	-	-	-	-	-	-	-	-	-	-	-	-	-
	Hispanic or Latino	-	-	-	-	-	-	-	-	-	-	-	-	-	-	-
	White	-	-	-	-	-	-	-	-	-	-	-	-	-	-	-
	Nonresident Alien	-	-	-	-	-	-	-	-	-	-	-	-	-	-	-
	Native Hawaiian or Other Pacific Islander	-	-	-	-	-	-	-	-	-	-	-	-	-	-	-
	Two or more races	-	-	-	-	-	-	-	-	-	-	-	-	-	-	-
	Unknown	-	-	-	-	-	-	-	-	-	-	-	-	-	-	-
Other Sports	Total	7	35	40	-	-	-	79%	-	71%	-	-	-	100%	-	100%
	Asian	-	-	-	-	-	-	-	-	-	-	-	-	-	-	-
	American Indian or Alaska Native	-	-	-	-	-	-	-	-	-	-	-	-	-	-	-
	Black or African American	-	-	-	-	-	-	-	-	-	-	-	-	-	-	-
	Hispanic or Latino	-	-	-	-	-	-	-	-	-	-	-	-	-	-	-
	White	6	32	38	-	-	-	70%	-	71%	-	-	-	100%	-	100%
	Nonresident Alien	-	-	-	-	-	-	-	-	-	-	-	-	-	-	-
	Native Hawaiian or Other Pacific Islander	-	-	-	-	-	-	-	-	-	-	-	-	-	-	-
	Two or more races	-	-	-	-	-	-	-	-	-	-	-	-	-	-	-
	Unknown	-	-	-	-	-	-	-	-	-	-	-	-	-	-	-

NOTES:

- (1) Source: ICCB Fall 2018 Enrollment by Sport Report for full-time degree-seeking students
- (2) Source: ICCB First-time, Full-time, Degree/Certificate Seeking Fall Cohort Completion/Transfer Reports for the specified cohorts within 150% of normal time/3 years
- (3) Athletic student group inclusion based on student receipt of athletically related student aid for the specified sport.
- (4) Rates not provided when five or fewer students are included in the calculation.



Section VII - Facts and Figures



ICCB Facts and Figures

Summary Profile of the Illinois Public Community Colleges



Illinois Community College Board

Table 1

A SUMMARY PROFILE OF THE ILLINOIS PUBLIC COMMUNITY COLLEGES

Dist. No.	District	District Location	District Size				2022 Tax Base EAV	2022 Tax Rates Extended			Student Enrollment		FY 24 Annual Tuition & Fee Charges
			# of Coll.	2022 Population Total	16 & Over	Square Miles		Educ. & O&M Rate	All Other Tax Rates	Total	Fall 2023 Headcount	Annual FY 23 FTE	
503	BLACK HAWK	Moline	1	213,422	172,457	2,240	\$ 4,738,994,065	27.18	27.23	54.41	3,853	2,546	\$4,920
518	CARL SANDBURG	Galesburg	1	97,109	79,643	2,834	\$ 2,295,562,704	27.39	31.69	59.08	1,688	1,089	\$5,250
508	CITY COLLEGES OF CHICAGO	Chicago	7	2,665,039	2,179,785	230	\$ 96,868,463,441	13.73	0.63	14.36	39,207	24,901	\$4,380
502	COLLEGE OF DUPAGE	Glen Ellyn	1	1,039,203	839,401	350	\$ 51,183,653,235	16.56	3.19	19.75	23,216	13,851	\$4,320
532	COLLEGE OF LAKE COUNTY	Grayslake	1	684,188	548,243	442	\$ 27,454,055,999	28.65	0.94	29.59	12,290	7,915	\$4,815
507	DANVILLE AREA	Danville	1	77,845	62,267	1,288	\$ 1,197,443,545	44.19	16.61	60.80	2,149	1,327	\$5,400
509	ELGIN	Elgin	1	451,859	360,518	343	\$ 14,661,803,557	34.56	7.69	42.25	9,614	5,920	\$3,960
512	HARPER	Palatine	1	522,299	425,930	193	\$ 20,857,855,365	33.81	11.45	45.26	13,069	8,183	\$4,635
540	HEARTLAND	Bloomington	1	209,891	170,851	1,863	\$ 5,200,466,759	28.33	29.15	57.48	4,795	3,071	\$5,460
519	HIGHLAND	Freeport	1	84,156	69,650	1,640	\$ 2,141,331,497	35.50	20.17	55.67	1,369	990	\$5,820
514	ILLINOIS CENTRAL	East Peoria	1	357,952	286,290	2,322	\$ 7,791,746,767	28.27	18.52	46.79	7,578	4,119	\$4,650
529	ILLINOIS EASTERN	Olney	4	101,382	82,494	3,066	\$ 1,964,494,217	24.11	18.54	42.65	4,755	2,920	\$4,260
513	ILLINOIS VALLEY	Oglesby	1	141,939	116,346	2,058	\$ 3,990,606,879	28.14	7.77	35.91	2,594	1,652	\$4,050
530	JOHN A. LOGAN	Carterville	1	139,626	114,543	1,192	\$ 2,210,930,726	34.38	38.71	73.09	3,120	2,169	\$4,500
539	JOHN WOOD	Quincy	1	90,578	73,125	2,363	\$ 2,128,475,936	28.33	13.76	42.09	1,866	1,204	\$5,100
525	JOLIET JUNIOR	Joliet	1	646,051	515,381	1,434	\$ 25,179,311,218	24.90	3.82	28.72	9,863	7,742	\$4,530
520	KANKAKEE	Kankakee	1	128,830	103,761	1,586	\$ 2,971,454,441	28.33	20.10	48.43	2,404	1,542	\$5,070
501	KASKASKIA	Centralia	1	114,413	93,055	2,231	\$ 2,101,653,678	27.43	27.85	55.28	3,447	2,302	\$4,800
523	KISHWAUKEE	Malta	1	107,978	87,446	831	\$ 2,882,928,245	33.60	27.11	60.71	2,807	1,620	\$4,920
517	LAKE LAND	Mattoon	1	175,309	142,778	3,961	\$ 2,533,999,432	28.33	24.05	52.38	3,699	3,650	\$4,280
536	LEWIS AND CLARK	Godfrey	1	212,098	173,346	2,044	\$ 5,176,578,649	25.00	35.44	60.44	4,196	2,293	\$4,650
526	LINCOLN LAND	Springfield	1	323,955	264,417	4,115	\$ 7,462,778,742	33.81	14.70	48.51	5,238	3,590	\$4,590
528	MCHENRY COUNTY	Crystal Lake	1	268,639	216,642	600	\$ 9,442,031,883	29.69	0.83	30.52	9,051	5,081	\$3,998
524	MORAINNE VALLEY	Palos Hills	1	399,476	328,709	133	\$ 11,649,102,061	27.18	7.85	35.03	11,144	7,014	\$4,770
527	MORTON	Cicero	1	154,702	121,740	17	\$ 1,951,118,436	50.65	8.37	59.02	3,653	2,188	\$4,560
535	OAKTON	Des Plaines	1	472,124	389,293	107	\$ 24,377,933,436	23.23	1.59	24.82	7,032	5,238	\$4,238
505	PARKLAND	Champaign	1	267,357	219,488	2,908	\$ 6,815,497,913	36.00	17.25	53.25	6,018	3,845	\$5,355
515	PRAIRIE STATE	Chicago Hgts.	1	201,561	161,197	220	\$ 3,535,665,365	41.75	5.76	47.51	3,045	2,222	\$5,220
521	REND LAKE	Ina	1	84,742	68,755	1,850	\$ 1,345,060,802	24.46	35.65	60.11	1,871	1,489	\$4,500
537	RICHLAND	Decatur	1	122,215	98,395	1,114	\$ 2,697,470,988	31.49	19.27	50.76	2,214	1,334	\$4,590
511	ROCK VALLEY	Rockford	1	355,570	283,694	1,033	\$ 7,160,941,744	26.70	21.02	47.72	5,480	3,685	\$4,260
506	SAUK VALLEY	Dixon	1	95,205	77,915	1,625	\$ 2,189,466,531	28.33	15.15	43.48	1,433	1,054	\$4,890
531	SHAWNEE	Ullin	1	52,789	43,665	1,466	\$ 734,069,528	30.00	35.97	65.97	1,142	1,110	\$4,650
510	SOUTH SUBURBAN	S. Holland	1	250,541	202,159	79	\$ 3,623,055,872	49.02	13.55	62.57	3,873	2,033	\$5,093
533	SOUTHEASTERN ILLINOIS	Harrisburg	1	47,747	39,745	1,656	\$ 671,677,387	37.00	48.64	85.64	1,392	858	\$4,320
522	SOUTHWESTERN ILLINOIS	Belleville	1	438,577	353,559	2,054	\$ 8,489,063,900	26.30	13.71	40.01	7,955	5,675	\$3,870
534	SPOON RIVER	Canton	1	62,278	51,884	1,566	\$ 1,037,659,086	28.33	42.78	71.11	1,225	719	\$5,790
504	TRITON	River Grove	1	320,277	262,868	55	\$ 10,022,141,603	27.09	3.73	30.82	9,262	5,459	\$4,920
516	WAUBONSEE	Sugar Grove	1	403,113	318,177	624	\$ 11,896,795,257	41.47	4.92	46.39	8,324	5,605	\$4,290
			48	12,582,032	10,199,611	55,733	\$400,633,340,889	30.60	17.82	48.42	246,931	159,204	\$4,710

Source: ICCB Data Book 2024



ICCB – Summary of Opening Fall Term FTE Students

Illinois Community College Board											
Table I-11											
SUMMARY OF OPENING FALL TERM STUDENT FULL-TIME EQUIVALENT (FTE) ENROLLMENT											
FALL 2013 THROUGH FALL 2022											
Dist No.	District/College	2014 FTE	2015 FTE	2016 FTE	2017 FTE	2018 FTE	2019 FTE	2020 FTE	2021 FTE	2022 FTE	2023 FTE
503	Black Hawk	3,635	3,126	3,215	2,835	2,577	2,533	2,222	2,134	2,079	2,113
518	Carl Sandburg	1,416	1,333	1,311	1,276	1,203	1,217	1,076	1,043	1,039	1,053
508	City Colleges of Chicago	(35,172)	(31,148)	(29,562)	(29,128)	(28,517)	(25,726)	(21,802)	(19,565)	(20,401)	(22,932)
	Harold Washington	6,680	6,507	6,046	6,060	5,836	4,914	4,074	3,451	3,249	3,377
	Harry S Truman	5,808	5,149	4,830	4,453	4,370	3,498	2,867	2,616	2,971	3,443
	Kennedy-King	3,412	2,556	2,285	2,051	1,999	1,806	1,194	1,325	1,362	1,639
	Malcolm X	3,982	3,484	3,934	4,229	4,462	4,744	4,512	4,107	4,460	4,831
	Olive-Harvey	2,712	1,947	1,722	1,615	1,474	1,392	1,196	1,046	1,209	1,598
	Richard J. Daley	5,364	5,108	4,724	4,670	4,389	3,954	2,875	2,676	2,768	3,480
	Wilbur Wright	7,215	6,398	6,021	6,050	5,986	5,417	5,084	4,344	4,382	4,565
502	College of DuPage	16,858	16,310	15,133	14,633	13,677	13,329	12,080	11,655	11,777	12,466
532	College of Lake County	8,422	8,365	8,208	8,163	8,019	7,848	6,975	7,054	6,857	7,321
507	Darville Area	1,623	1,587	1,505	1,484	1,443	1,388	1,185	1,139	1,111	1,249
509	Elgin	6,385	6,052	5,773	5,679	5,577	5,732	4,816	4,712	5,016	5,406
512	Harper	8,693	8,353	8,131	7,908	7,740	7,713	7,264	6,862	6,878	7,208
540	Heartland	3,237	3,337	3,219	3,241	3,055	2,978	2,657	2,687	2,740	2,689
519	Highland	1,182	1,162	1,165	1,106	1,053	952	874	808	756	828
514	Illinois Central	5,862	5,585	5,318	5,242	5,008	4,892	4,347	3,984	3,788	4,115
529	Illinois Eastern	(3,268)	(3,236)	(3,127)	(3,015)	(2,850)	(2,667)	(2,431)	(2,270)	(2,256)	(2,260)
	Frontier	539	549	576	607	580	559	540	539	522	570
	Lincoln Trail	655	673	646	650	613	575	567	484	481	440
	Olney Central	910	874	755	767	749	710	638	666	653	635
	Wabash Valley	1,163	1,140	1,150	991	909	822	686	583	600	616
513	Illinois Valley	2,169	1,991	1,981	1,906	1,718	1,689	1,517	1,457	1,497	1,534
530	John A. Logan	3,052	2,426	2,649	2,575	2,530	2,378	2,122	1,859	1,974	1,958
539	John Wood	1,313	1,325	1,331	1,268	1,293	1,299	1,252	1,160	1,117	1,165
525	Joliet Junior	9,020	8,699	8,662	8,479	8,146	8,022	6,308	6,399	6,008	6,125
520	Kankakee	2,104	1,961	1,816	1,694	1,642	1,557	1,431	1,368	1,455	1,494
501	Kaskaskia	2,637	2,392	2,010	1,796	1,843	1,899	1,641	1,538	1,806	1,911
523	Kishwaukee	2,800	2,500	2,362	2,146	2,021	1,816	1,553	1,454	1,508	1,649
517	Lake Land	3,362	3,239	3,215	3,153	2,999	2,900	2,605	2,368	2,476	2,381
536	Lewis and Clark	4,087	3,962	3,566	3,375	3,283	3,153	2,539	2,282	2,147	2,337
526	Lincoln Land	4,323	3,987	3,620	3,677	3,468	3,413	3,123	3,019	2,807	3,131
528	McHenry County	3,880	3,739	3,584	3,747	3,777	3,893	3,976	4,226	4,256	4,320
524	Moraine Valley	9,651	9,345	9,152	8,825	8,340	7,712	6,410	6,065	5,943	6,297
527	Morton	2,585	2,596	2,467	2,485	2,402	2,391	2,019	2,054	2,043	1,991
535	Oakton	5,670	5,310	5,053	4,829	4,659	4,497	4,254	4,068	4,151	3,933
505	Parkland	5,101	4,925	4,719	4,386	4,297	4,003	3,528	3,250	3,376	3,484
515	Prairie State	2,812	2,805	2,630	2,579	2,305	2,242	1,618	1,505	1,602	1,763
521	Rend Lake	1,764	1,607	1,736	1,621	1,670	1,544	1,263	1,351	1,398	1,297
537	Richland	1,801	1,778	1,591	1,433	1,397	1,500	1,219	1,147	1,094	1,081
511	Rock Valley	4,940	4,872	4,936	4,126	4,078	4,033	3,817	3,633	3,669	3,564
506	Sauk Valley	1,379	1,221	1,194	1,094	1,028	1,046	915	872	885	923
531	Shawnee	1,075	1,078	1,057	903	891	843	862	648	707	676
510	South Suburban	2,703	2,523	2,256	2,060	2,067	1,939	1,645	1,566	1,663	2,011
533	Southeastern Illinois	1,024	1,043	930	878	837	870	701	666	729	743
522	Southwestern Illinois	6,792	6,382	6,169	5,751	5,514	5,388	4,510	4,583	4,310	4,570
534	Spoon River	987	986	985	918	846	848	757	746	688	689
504	Triton	6,030	6,126	6,098	5,883	5,812	5,411	4,796	4,836	4,785	4,889
516	Waubensee	5,671	5,457	5,361	5,007	4,825	4,613	4,129	4,324	4,124	4,471
	TOTALS	194,485	183,870	176,797	170,303	164,405	157,873	138,237	132,358	132,913	140,029

SOURCE OF DATA: ICCB Centralized Data System--Fall Enrollment (E1 Records)-reflects enrollment as of the fall term census date (end of registration). Will not reflect enrollments in courses that have a starting date later than the census date-particularly those in adult education.



ICCB Reimbursable Credit Hours

Illinois Community College Board								
Table IV-3								
FISCAL YEAR 2022 TOTAL REIMBURSABLE CREDIT HOURS*								
Dist. No.	District	Baccalaureate	Business	Technical	Health	Remedial	ABE/ASE	Total
503	Black Hawk	36,446.3	2,804.3	7,561.0	7,092.3	2,149.5	9,814.4	65,867.8
518	Carl Sandburg	19,941.0	795.5	1,371.5	4,473.0	618.0	-	27,199.0
508	City Colleges of Chicago	314,277.0	35,214.5	25,750.0	28,440.5	33,492.0	159,195.5	596,369.5
502	College of DuPage	217,687.0	30,064.5	46,775.0	23,418.5	12,437.5	13,791.0	344,173.5
532	College of Lake County	142,495.0	8,014.0	17,556.5	12,771.5	6,980.0	13,550.3	201,367.3
507	Danville	16,792.5	2,419.0	5,384.0	3,413.0	1,000.0	373.5	29,382.0
509	Elgin	91,497.5	7,169.0	12,343.0	8,595.0	7,972.0	15,256.0	142,832.5
512	Harper	149,757.0	13,723.5	14,286.0	15,554.5	5,704.0	7,332.5	206,357.5
540	Heartland	59,847.0	2,042.5	4,617.0	5,617.5	3,763.0	5,314.0	81,201.0
519	Highland	16,700.0	1,319.0	4,502.0	3,302.0	1,128.0	746.0	27,697.0
514	Illinois Central	84,119.5	3,956.0	10,580.0	13,079.0	3,097.0	1,634.0	116,465.5
529	Illinois Eastern	42,316.0	5,766.5	20,863.5	9,834.5	443.0	1,205.0	80,428.5
513	Illinois Valley	28,714.0	2,391.0	6,705.5	4,623.5	934.0	986.5	44,354.5
530	John A. Logan	35,360.0	4,256.0	6,273.5	8,558.0	1,228.0	2,952.0	58,627.5
539	John Wood	20,959.0	2,995.0	2,685.0	2,341.0	651.0	489.0	30,120.0
525	Joliet	139,234.0	7,900.0	22,752.0	14,330.5	10,796.0	10,745.0	205,757.5
520	Kankakee	24,743.0	1,296.0	4,374.0	7,463.0	1,554.0	1,064.5	40,494.5
501	Kaskaskia	32,401.5	6,347.0	7,685.5	8,705.0	1,563.0	1,917.0	58,619.0
523	Kishwaukee	25,396.0	2,473.0	4,612.0	4,447.0	1,618.0	2,114.0	40,660.0
517	Lake Land	44,807.5	9,628.0	23,623.5	12,106.0	1,580.5	682.5	92,428.0
536	Lewis & Clark	41,388.5	3,749.5	6,603.0	6,005.5	2,100.0	2,074.0	61,920.5
526	Lincoln Land	69,491.5	2,225.5	12,343.0	10,174.0	1,262.0	1,588.5	97,084.5
528	McHenry	91,187.0	8,664.0	10,111.0	5,037.0	2,303.0	4,081.0	121,383.0
524	Moraine Valley	121,103.0	10,270.0	16,278.5	11,768.0	11,370.0	5,970.0	176,759.5
527	Morton	39,449.0	2,926.0	3,221.0	5,290.0	3,472.0	6,397.0	60,755.0
535	Oakton	85,364.0	9,722.5	7,750.0	8,586.5	6,928.0	17,153.0	135,504.0
505	Parkland	57,794.0	3,085.5	11,838.0	10,718.0	5,531.0	3,206.0	92,172.5
515	Prairie State	28,922.0	1,526.0	4,205.5	6,635.0	1,480.0	2,776.5	45,545.0
521	Rend Lake	24,163.0	3,799.0	6,769.0	6,244.0	787.0	734.0	42,496.0
537	Richland	21,094.0	2,154.0	4,337.0	5,022.5	1,139.0	820.1	34,566.6
511	Rock Valley	77,495.5	5,377.0	13,910.5	7,125.0	1,915.0	8,354.0	114,177.0
506	Sauk Valley	18,088.5	1,824.0	2,879.5	3,800.0	988.0	577.5	28,157.5
531	Shawnee	14,308.0	1,419.5	1,789.5	3,645.5	541.0	4,790.0	26,493.5
510	South Suburban	21,980.0	4,011.5	2,062.5	5,887.0	4,838.0	4,303.5	43,082.5
533	Southeastern	13,196.0	1,605.0	2,770.0	2,701.0	974.0	-	21,246.0
522	Southwestern	80,000.0	15,524.5	25,449.5	13,312.5	3,233.0	4,887.5	142,407.0
534	Spoon River	15,942.0	596.0	2,249.0	1,537.0	895.0	540.0	21,759.0
504	Triton	73,731.5	10,079.0	19,587.5	10,028.5	8,396.0	11,735.0	133,557.5
516	Waubensee	95,885.0	8,581.0	7,735.0	6,834.0	5,897.0	8,659.0	133,591.0
	TOTAL	2,534,073.3	247,713.8	412,189.5	328,516.3	162,757.5	337,809.3	4,023,059.7

*Total reimbursable SU and SR credit hours



Section VIII - Internal Affairs



Internal Affairs

Employees

Total Employees by Status

	Total Employees	Full-Time Employees	Part-Time Employees
Fall 2020	383	178	205
Fall 2021	325	172	153
Fall 2022	308	170	138
Fall 2023	305	172	133
Fall 2024	309	182	127

Source: ICCB C1 - RLC Human Resources Department

Instructional Employees

Instruction	2020	2021	2022	2023	2024
Full Time	53	50	47	43	42
Part Time	66	63	54	59	55

Source: ICCB C1 - RLC Human Resources Department

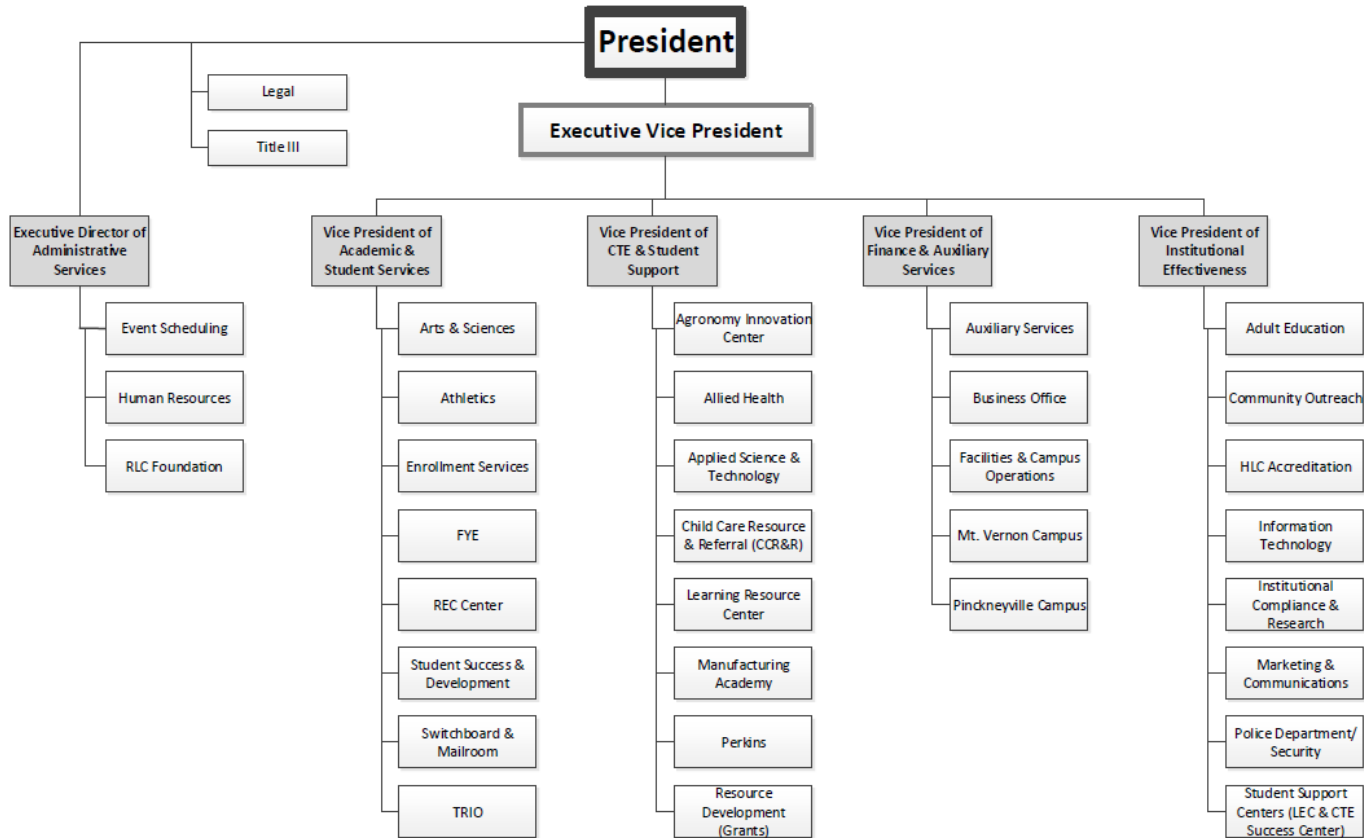
Student to Faculty Ratio

IPEDS 2019-20	18:01
IPEDS 2020-21	17:01
IPEDS 2021-22	17:01
IPEDS 2022-23	19:01
IPEDS 2023-24	18:01

Source: IPEDS Fall Enrollment Survey

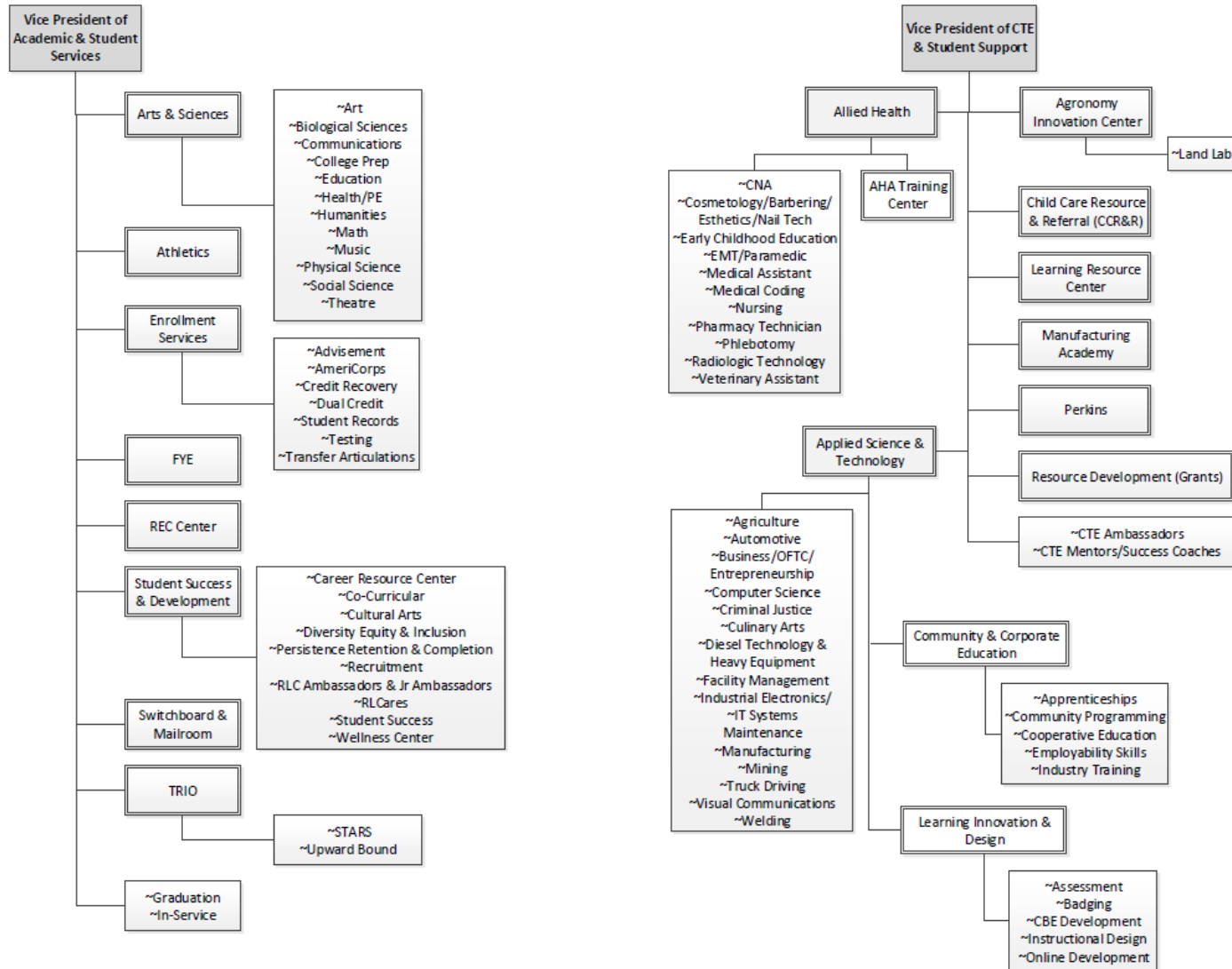


Rend Lake College Organizational Chart



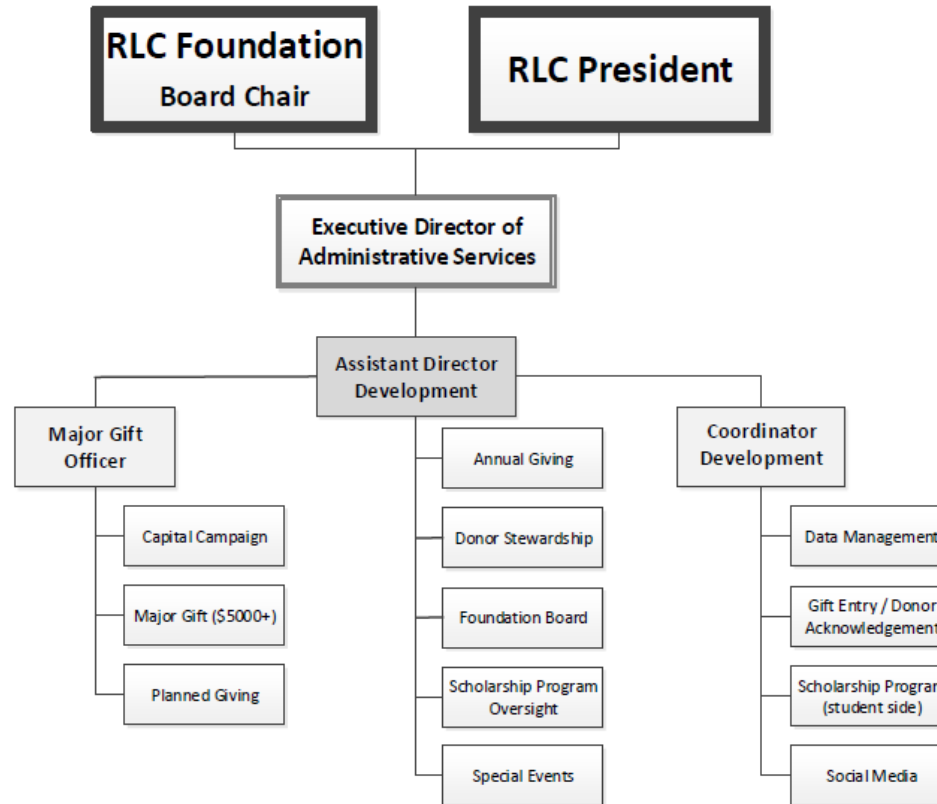
Revised
01/01/2024

Tier 1



Revised
01-01-2024

Tier 2,
Page 1



Revised
01-01-2024



Outstanding Faculty & Staff Awards

Outstanding Staff Award

2015	Nathan Wheeler
2016	Joy Fitts, Ron Murray, Kent McKown
2017	Wesley Rush, Sue Cunningham
2018	Jena Jensik
2019	Lynne French
2020	Shari Carpenter
2021	Taylor Hutchens
2022	Heather Adams
2023	Chris & Glenna Maxwell
2024	Damon Sims

Outstanding Part-Time Faculty Award

2015	Eric Knapp
2016	Chris Edwards
2017	No Nominees
2018	No Nominees
2019	No Nominees
2020	No Nominees
2021	Bill Garlich
2022	Christine Emling
2023	William Reynolds
2024	Daniel Brock

Outstanding Faculty Award

2015	Ricky Robinson
2016	Shari Carpenter
2017	Carrie Ragan
2018	Cindy Caldwell
2019	Brenda Heinzmann
2020	Jeannie Mitchell
2021	Nathan Brouwer
2022	Mike Meinert
2023	Jeff Keen
2024	Jeff Fairbanks

Assessment Award

2014	No Nominees
2015	No Nominees
2016	Rob Little
2017	Sarah Bilderbeck
2018	Holly Heisner
2019	Alex Martin
2020	No Nominees
2021	Sara Alstat-Sanders
2022	No Nominees
2023	Mark Jornd
2024	No Nominees

Source: President's Office



Learning Resource Center

Library Materials

	2020	2021	2022	2023	2024
Total Collection (books, backfiles, other materials)*entire collection in Polaris	15384	7935	7843	7680	7166
Magazine Subscriptions (paper)	37	0	0	0	0
Newspaper Subscriptions (paper)	3	0	0	0	0
Electronic Resources (A to Z Resources)	61	62	62	62	62
Streaming Videos (STARTED 2019)	35644	39523	43739	47398	30025
E-Journals	25158	34235	33115	38493	38766
E-Books (EBSCO and Cloud Library)	142485+	147488	155832	147170	271467

Library Services

	2020	2021	2022	2023	2024
Circulation/Use of Library Material*	1,156	569	1,519	1,316	1,373
Reserve Collection Transactions	198	0	0	137	18
Total Interlibrary loans provided to other libraries	1910	972	1147	1680	1707
Total interlibrary loans received from other libraries	450	290	1225	479	483
Reference transactions	138	131	20	14	2
Number of library tours	19	9	0	18	17
Estimated Total attendance at library tours	83	22	0	21	17
Number of Information Literacy Workshops	67	67	18	22	3
Total attendance at Information Literacy Workshops	1330	380	480	251	24
Number of searches in Electronic Databases	77562	23838	38745	34841	27097
Number of story hours for Children's Center	49*	37*	21	19	30
Estimated total attendance at story hours	1169*	1107*	332	252	505

*includes Facebook recorded story hour since COVID, participants include Facebook views

Sources: LRC stats, ACRL surveys, ILLINET traffic survey



Program Labs

Program	Lab (Building/Room)
CNA & Nursing	LRC 201, LRC 203 (Nursing Labs)
CNA	RLM 230, RLM 236 (CNA Lab - Mt. Vernon Campus)
Medical Assistant	ATC 201 (Medical Assistant Lab)
Rad Tech	ATC 191 (Rad Tech Lab)
EMT/Paramedic	RLM 223 (EMS Lab - Mt. Vernon Campus)
Pharmacy	LRC 203 (Pharm/Nursing Lab)
Culinary Arts	STC 103, STC 120 (Culinary Labs)
Ag Mechanics	ASC 124, ASC 128, ASC 129 (Truck Bay Labs for Ag Diesel, Heavy Equipment & Mechanics) VOC 126 (Reconditioning Lab)
Ag Production & Management	ASC 128 (Truck Bay Labs for Ag Diesel, Heavy Equipment & Mechanics) VOC 126 (Reconditioning Lab)
Architecture	VOC 103 (Architecture Lab with Computers)
Automotive	VOC 123, VOC 124 (Automotive Labs)
Criminal Justice	ATC 143 (Criminal Justice Lab), Outdoor Range
Diesel Tech	ASC 128, ASC 129 (Truck Bay Labs for Ag Diesel, Heavy Equipment & Mechanics)
Graphic Design	VOC 104 (Graphic Design Lab with Computers)
Heavy Equipment	ASC 124, ASC 128, ASC 129 (Truck Bay Labs for Ag Diesel, Heavy Equipment & Mechanics)
Industrial Electronics	SIM 430 (PLC Lab), SIM 420 (Robotics Lab & Electronics Lab), ATC 166 (Hydraulics Lab), ATC 169 (Welding Lab), VOC 105 (Machine Lab)
IT Security Specialist	ATC 177 (IT Lab)
Manufacturing Technology	SIM 420 (Electronics Lab), ATC 166 (Hydraulics Lab), ATC 169 (Welding Lab)
Mining Technology	ATC 166 (Hydraulics Lab)
Welding	ATC 166 (Hydraulics Lab), ATC 169 & 170 (Welding Lab), VOC 105 (Machine Lab)
Cosmetology	RLM 362, RLM 364, RLM 365, RLM 376, RLM 377, RLM 408 (Lab for Cosmetology, Barber, Esthetics, Nail Tech)



Information Technology

Computer Lab (by Location)

RLC Campus

Academic Building (ACA)

- ACA 203 – 27 PCs for Math Lab
- ACA 204 – 23 PCs for English Prep Lab
- ACA 206 – 25 PCs for English Lab
- ACA 215 – 43 PCs for Classroom Computer Lab

Advanced Technology Center (ATC)

- ATC 156 – 20 Laptops for Mobile Cart
- ATC 175 – 21 PCs for Computer Science Lab
- ATC 176 – 31 PCs for Computer Lab
- ATC 177 – 21 PCs for Network & Forensics Lab
- ATC 178 – 22 PCs for Programming Lab

Agronomy Innovation Center (AIC)

- AIC 106 – 4 Tuff Books for Field Use
- AIC 107 – 21 Laptops for Mobile Cart

Applied Science Center (ASC)

- ASC 105 – 17 Laptops for Mobile Cart
- ASC 110 – 6 PCs for Student Use

Learning Resource Center (LRC)

- LRC 114 – 31 PCs for CTE Success Center (Quiet Study Room)
- LRC 128 – 15 PCs for Open Lab
- LRC 142 – 7 PCs for CTE Success Center/Nursing/Tutoring
- LRC 168 – 2 PCs for Study Room
- LRC 169 – 1 PC for Conference Study Room
- LRC 173 – 8 PCs for Study Room
- LRC 174 – 2 PCs for Study Room
- LRC 201 – 3 PCs for Nursing Simulation Lab
- LRC 203 – 3 PCs for Nursing Simulation Lab
- LRC 205 – 31 PCs for Computer Lab
- LRC 206 – 31 PCs for Computer Lab
- LRC 207 – 31 PCs for Computer Lab

North Oasis (OSN)

- OSN 101 – 14 PCs for Math Lab
- OSN 104 – 2 PCs for Adult Ed
- OSN 116 – 8 PCs for Adult Ed Lab
- OSN 122 – 1 PC for Student Study Space
- OSN 123 – 1 PC for Student Study Space
- OSN 124 – 1 PC for Student Study Space
- OSN 125 – 2 PC for Communications Lab
- OSN 131 – 7 PCs for LEC Lab

Science Building (SCI)

- SCI 108 – 7 PCs for Science Lab
- SCI 115 – 13 PCs for Science Lab
- SCI 137 – 21 PCs for Anatomy Lab

South Oasis (OSS)

- OSS 115 – 10 PCs for STARS Program Tutoring
- STARS Program – 19 Laptops for Loan Program
- OSS 131 – 6 PCs for Esports

Vocational Building (VOC)

- VOC 103 – 7 PCs for AutoCAD Lab
- VOC 104 – 14 Macs for Graphics Design Lab
- VOC 105 – 2 PCs for LNC, Laser Engraver
- VOC 111 – 17 PCs for Auto Classroom
- VOC 123 – 5 PCs for Automotive Bay
- VOC 124 – 1 PC for Automotive Bay

Additional Locations

Pinckneyville Murphy Wall Campus

- PNK 102 – 16 PCs for Open Computer Lab
- PNK 115 – 3 PCs for Study Area
- PNK 116 – 6 PCs for Science Classroom

Mount Vernon Marketplace

- RLM 221 – 10 Laptops for Mobile Cart
- RLM 328 – 8 Laptops for Adult Ed Mobile Cart
- RLM 330 – 16 PCs for Adult Education
- RLM 338 – 31 PCs for Open Computer Lab
- SIM 430 – 13 PCs for Robotics Lab
- SIM 431 – 25 Laptops for Mobile Cart



Grant Awards

Grant Name	Amount
Adult Education	\$282,123
AmeriCorps-FY23	\$7,595
AmeriCorps-FY24	\$303,495
Apprenticeship Expansion	\$53,205
Beginner Farmers and Ranchers	\$99,954
CCAMPIS-Child Care Access Means Parents in Schools	\$21,758
Child Care Resource & Referral (CCR&R)	\$1,303,240
Competency-Based Education	\$60,000
Delta Regional Authority	\$101,350
Developmental Education Reform Act (DERA)	\$51,459
Digital Instruction for Adult Education	\$67,300
Dual Credit	\$145,369
Early Childhood Access Consortium	\$330,777
Early Childhood Pre-K Block Grant	\$177,146
Fed- Children's Center	\$44,194
Illinois Green Energy Network	\$294,671
Illinois Bridge & Transition Grant	\$21,893
Mental Health Early Action on Campus Act	\$54,736
Noncredit Workforce Training Initiative	\$130,000
NRA	\$5,600
PATH	\$516,169
Perkins Leadership Grant	\$50,558
Perkins Postsecondary	\$282,832
Rev Up-EV Grant	\$273,898
Smart Start Transition Grant	\$43,303
Strengthening Community College Training	\$220,970
Taking Back the Trades Round 2	\$348,765
Title III: Thriving Through Change	\$449,995
Title IV- STARS- SSS	\$317,998
Title IV- Upward Bound	\$312,480
Trades School Grant Program	\$232,975
Virtual Reality (VR) Grant	\$50,645
Archery Program Grant	\$1,767
TOTALS	\$6,658,220

Source: Grant Office December 2024



Section VIII – RLC Foundation



Foundation Financials

Assets	FY 2023
Cash and Cash Equivalents	\$220,123
Accounts Receivable	\$2,457
Investments	\$6,856,517
Unconditional promises to Give, Less Allowances for Uncollectible Promises	\$102,730
Property & Equipment, Net of Depreciation	\$14,805
Beneficial Interest in Perpetual Trust	\$396,472
Total Assets	\$7,593,104
Liabilities & Net Assets	
Accounts Payable	\$3,000
Due to Rend Lake College	\$105,884
Total Liabilities	\$108,884
Net Assets without Donor Restriction	\$921,345
Net Assets with Donor Restriction	\$6,562,875
Total Net Assets	\$7,484,220
Total Liabilities & Net Assets	\$7,593,104

Foundation Information

For more information about the Foundation team, highlights, and articles, visit <https://info.rlc.edu/rend-lake-college-foundation>.