

2023

ONLINE AT [RLC.EDU/DATABOOK](http://RLC.EDU/DATABOOK)

THE JOURNEY STARTS AT REND LAKE COLLEGE

# DATA BOOK



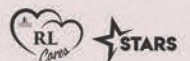
DATA THAT **DRIVES** DECISION-MAKING

**LOOK INSIDE! FACTS & FIGURES**

on student population, human resources, enrollment, retention, completion & more.

TUITION & FEES · FINANCIAL AID · ICCB FACTS & FIGURES · STUDENT DEMOGRAPHICS · RETENTIONS & COMPLETION  
GRADUATION RATES · INTERNAL AFFAIRS · STUDENT CONSUMER INFORMATION

#WEARERENDLAKE





# Contents

- Presidential Welcome**..... 5
- Board of Trustees** ..... 6
- History of Rend Lake College Board of Trustees**..... 7
- College Mission** ..... 10
- Value Statement**..... 10
- Institutional Outcomes**..... 10
  - Who We Are..... 10
  - Who We Serve ..... 10
  - Diversity of Culture ..... 11
  - Diversity of Purpose..... 11
  - Definition of Equity ..... 11
  - Neurodiversity Statement..... 11
- Common Outcome** ..... 12
- Fact Book**..... 12
- The Students**..... 12
- The Faculty and Staff** ..... 12
- The Organization and District** ..... 13
- District Information**..... 14
  - Population by County ..... 14
  - District Population..... 14
  - Unemployment Rates by County ..... 14
  - District Poverty Rates by County ..... 15
  - District High School Graduation Count..... 15
- COVID-19 (Coronavirus)** ..... 16
  - FALL 2020..... 16
  - SPRING 2021 ..... 16
- Section I: Tuition and Fees** ..... 17
- Tuition and Fees** ..... 18
  - Tuition per Credit Hour ..... 18
  - Tuition Comparison..... 18
  - Cost of Attendance ..... 19



Lab/Course Fees .....	19
Special Program Fees.....	19
<b>Miscellaneous Fees and Options.....</b>	<b>20</b>
Textbooks .....	20
Transcript Fee .....	20
Payment Plan .....	20
Non-Payment Fee .....	20
Parking and/or Speeding fines .....	20
Fines and Financial Obligations.....	20
<b>Section II: Students.....</b>	<b>21</b>
<b>Students.....</b>	<b>22</b>
Headcount by Enrollment Status.....	22
Headcount Attempted vs. Earned .....	23
<b>Credit Hours .....</b>	<b>24</b>
Total Credit Hours Attempted by Term .....	24
Total Credit Hours Earned by Term.....	24
FTE (full-time equivalency) by Fiscal Year .....	24
Total Reimbursable Credit Hours (by term).....	24
Dual Credit by Fiscal Year and High School.....	25
Dual Credit Textbook Savings Report .....	26
Dual Credit & Dual Enrollment.....	27
Dual Credit & Dual Enrollment by High School .....	27
Dual Credit & Dual Enrollment Students .....	28
Online Course Offerings/Enrollment.....	28
Hybrid Course Offerings/Enrollment .....	28
<b>Section Size .....</b>	<b>29</b>
<b>Active Clubs .....</b>	<b>29</b>
<b>Academic Honors.....</b>	<b>30</b>
<b>Academic Warnings.....</b>	<b>30</b>
<b>Tutoring Center .....</b>	<b>31</b>
<b>Section III: Student Demographics.....</b>	<b>32</b>
<b>Student Demographics.....</b>	<b>33</b>
Enrollment by Residency .....	33





Enrollment by State .....	34
Enrollment by County – Top 15 Counties .....	35
Enrollment by Student Level at Initial Registration for FY .....	35
Student by Generation .....	35
First-Time Freshman by Fiscal Year .....	36
Veteran Status .....	36
Enrollment by Degree/Certificate Type .....	36
Enrollment by GPA.....	37
Enrollment by Highest Degree Previously Earned.....	37
Students attending on Chargeback/Contractual Agreements.....	38
Contractual Agreement Totals .....	39
<b>Section IV: Finances &amp; Financial Aid .....</b>	<b>40</b>
<b>Finances.....</b>	<b>41</b>
Revenue & Expenses .....	41
Fiscal Year Breakdown .....	41
<b>Financial Aid.....</b>	<b>42</b>
Financial Aid by Award Type.....	42
Financial Aid – IPEDS Report.....	43
<b>Section V: Retention, Completion and Graduation Rates.....</b>	<b>44</b>
<b>Retention, Graduation Rates, and Completions .....</b>	<b>45</b>
Retention Rates.....	45
Fall to Fall Adjusted Retention Rates.....	45
<b>Graduation Rates.....</b>	<b>46</b>
<b>Completions .....</b>	<b>47</b>
Completions by Gender & Ethnicity.....	47
Completions by Term                      Students Completed a Certificate or Degree .....	47
Completions by Degree/Certificate Type.....	47
<b>Completion Detail by Degree/Certificate Type .....</b>	<b>48</b>
<b>Student Outcome Measures.....</b>	<b>51</b>
<b>Transfer Rates .....</b>	<b>51</b>
<b>Section VI - Student Consumer Information .....</b>	<b>52</b>
<b>Security Report.....</b>	<b>53</b>
<b>Student Right to Know.....</b>	<b>55</b>



<b>Section VII - Facts and Figures</b> .....	56
<b>ICCB Facts and Figures</b> .....	57
Summary Profile of the Illinois Public Community Colleges.....	57
ICCB – Summary of Opening Fall Term FTE Students.....	58
<b>Section VIII - Internal Affairs</b> .....	59
<b>Internal Affairs</b> .....	60
Employees .....	60
Total Employees by Status.....	60
Instructional Employees .....	60
Student to Faculty Ratio .....	60
<b>Rend Lake College Organizational Chart</b> .....	61
<b>Outstanding Faculty &amp; Staff Awards</b> .....	65
<b>Learning Resource Center</b> .....	66
Library Materials .....	66
Library Services.....	66
<b>Program Labs</b> .....	67
<b>Information Technology</b> .....	68
Computer Lab (by Location) .....	68
RLC Campus.....	68
Additional Locations .....	68
<b>Grant Awards</b> .....	69
<b>Section VIII – RLC Foundation</b> .....	70
Foundation Financials.....	71
Foundation Information.....	71

## Presidential Welcome



## A Message from the President

As the old adage goes, knowledge is power. Data-driven decision-making is vital in our lives and workplaces; contained within the Rend Lake College Fact Book is some of the data we collect and examine over the course of the year. Looking at and considering this information is part of our commitment to bring you our best.

In the following pages, you will find facts and figures on our student population, human resources, enrollment numbers, retention and completion figures, and much more. We hope you find some value in this information, which we present here as another way we can be open and transparent with our community.

As always, this is your community college. Feel free to get in touch with us if you have questions or want to explore what we can do for you.

A handwritten signature in black ink, appearing to read "Terry Wilkerson".

Terry Wilkerson

Rend Lake College President



## Board of Trustees

Board Year 2023
Larry Manning
Brian Dorris
Jeff Jones
Dr. David Asbery
Joe Coy
Ron Daniels
Tony Wielt
Student Trustee
Maggie Stacey

Board Year 2022
Randy Rubenacker
Larry Manning
Brian Dorris
Dr. David Asbery
Randall Crocker
Jeff Jones
John Kabat
Student Trustee
Colt Henson

Board Year 2021
Randy Rubenacker
Larry Manning
Brian Dorris
Dr. David Asbery
Randall Crocker
Jeff Jones
John Kabat
Student Trustee
Nick Wimber

Board Year 2020
Randy Rubenacker
Larry Manning
Brian Dorris
Dr. David Asbery
Randall Crocker
John Kabat
Jeff Jones
Student Trustee
Dakota Tate

Board Year 2019
Randy Rubenacker
Larry Manning
Brian Dorris
Dr. David Asbery
Randall Crocker
John Kabat
Jeff Jones
Student Trustee
Remington Henson

Board Year 2018
Randy Rubenacker
Dr. David Asbery
Randall Crocker
John Kabat
Larry Manning
Brian Dorris
Jeff Jones
Student Trustee
MacKenzie Trader

## History of Rend Lake College Board of Trustees

\* 1966 - 1979

**Dr. Allen Y. Baker**  
(Pinckneyville)

Elected to 1-yr. term; re-elected  
to 3-year terms four times

\* 1966 - 1978

**Carleton Apple**  
(Enfield)

Elected to 3-yr. term; re-elected  
to 3-yr. terms three more times

\* 1966 - 1972

**Melvin Farlow**  
(McLeansboro)

Elected to 3-year term;  
re-elected in 1969; Board  
President suffered heart attack  
in '70, continued to serve but  
declined leadership role in '71

\*1966 - 1972

**Harry N. Irwin**  
(Wayne City)

Elected to 3-year term; re-elected to  
3-yr term a second time.

\* 1966 - 1971

**Dr. Curtis A. Parker**  
(Mt. Vernon)

Elected to 2-yr. term; re-elected  
to 3-year term in 1968

\* 1966 - 1969

**Holland Simmons**  
(Benton)

Elected to 2-yr. term; re-elected  
to 3-yr. term in 1968; Drowned  
in boating accident July 27, '69

\* 1966 - 1969

**Forrest Stewart**  
(Texico)

Elected to 1-yr. term; re-elected  
to 3-year term in 1967; moved  
out of district during 2nd term

\* 1969 - 1973

**Huel Cross**  
(Belle Rive)

Appointed August 11 to fill  
position held by F. Stewart;  
elected to 3-year term in 1970

\* 1969 - 1977

**Marie Simmons**  
(Benton)

Appointed August 19 to fill  
position held by late husband;  
elected to 1-year unexpired  
term in 1970; re-elected twice

\* 1971 - 1976

**Albert Gulley**  
(Benton)

Elected to fill position held  
previously by C. Parker;  
re-elected to 3-yr. term in 1974,  
vacated seat August 4, 1976

\* 1972 - 1978

**B.B. Connaway**  
(McLeansboro)

Elected to 3-year term;  
re-elected to 3-yr. term in 1975

\* 1972 - 1975

**William L. Moore**  
(Mt. Vernon)

Elected to 3-year term

\* 1973 - 1976

**David Skorch**  
(Dix)

Elected to 3-year term

\* 1975 - 1976

**O.K. Ausmus**  
(Benton)

Elected to 3-year term; moved  
out of state in Year Two

\* 1976 - 1986

**Joseph A. McClure Jr.**  
(Mt. Vernon)

Appointed June 15 to fill  
position held by O.K. Ausmus;  
elected to 1-yr. unexpired term  
in 1977; re-elected three times;  
resigned October 21, 1986

\* 1976 - 1999

**Dr. W. Richard Simpson**  
(Benton)

Appointed August 17 to fill  
position held by A. Gulley;  
elected 1977; re-elected twice  
to 3-year terms; re-elected to  
5-yr. term in 1980; re-elected  
to 6-year term in 1985; reelected  
to 2-year term in 1997

\* 1976 - 1978

**Dr. Clyde R. Funkhouser**  
(Mt. Vernon)

Elected to 3-year term;  
resigned May 16, 1978

\* 1977 - 1989

**Everett K. Thompson**  
(Sesser)

Elected to 3-year term;  
re-elected to 5-yr. term in 1980;  
re-elected to 6-yr. term in 1985;  
resigned in 1989

\* 1978 - 2013

**Marvin W. Scott**  
(Belle Rive)

Appointed May 16 to fill position  
held by C. Funkhouser; elected  
to unexpired 4-year term in '79;  
re-elected to 6-year terms five  
more times

\* 1978 - 1993

**Joe H. Scrivner**  
(Mt. Vernon)

Elected to 3-year term;  
re-elected to 6-yr. terms twice

\* 1978 - 1985

**Richard E. Herrin**  
(Benton)

Elected to 3-yr. term; re-elected  
to 6-yr. term; resigned August 20  
when moved out of district

\* 1979 - 2001

**Dr. Allan D. Patton**  
(Zeigler)

Elected to 3-yr. term, extended  
to 4 years; re-elected to three  
6-year terms



\* 1985 - 1999

**Dr. B. Kirby Browning**

(Benton)

Appointed August 20 to fill position held by R. Herrin; elected to 6-year terms twice

\* 1986 - 1987

**Mark J. Ballard**

(Mt. Vernon)

Appointed October 21 to fill position held by Joe McClure

\* 1987 - 1988

**David K. Dalby**

(Benton)

Elected to 6-yr. term; resigned five months later on April 19

\* 1988 - 1989

**David Hurley**

(Benton)

Appointed May 17 to fill position held by D. Dalby; chose not to run for unexpired 4-year term

\* 1989 - 1997

**Robert J. Kirkpatrick**

(Sesser)

Appointed to fill position held by E. Thompson; elected in '89 to unexpired two-year term; re-elected to 6-year term

\* 1989 - 1994

**Olie Musgrave**

(Mt. Vernon)

Elected to unexpired 4-year term; elected to 6-year term in 1993; resigned December 20 and moved out of district

\* 1993 - 2011

**William David Edmison**

(Mt. Vernon)

Elected to three 6-year terms

\* 1994 - 1996

**Jim Hinman**

(Mt. Vernon)

Appointed December 20 to fill position held by O. Musgrave; elected to unexpired 4-year term in 1995; died May 30, 1996

\* 1996 - 1997

**Caroline Quinn**

(Mt. Vernon)

Appointed June 11 to fill position held by J. Hinman; chose not to run in November 1997 election

\* 1997 - 2009

**Hunt Bonan**

(McLeansboro / Mt. Vernon)

Elected to two 6-year terms

\* 1997 - 2009 [See 2013-2025]

**Randall Crocker**

(Sesser)

Elected to two 6-year terms

\* 1999 - 2005

**Courtney Cox**

(Benton)

Elected to 5 1/2-year term; Resigned position just months after re-election for 6-years

\* 1999 - 2000

**Dennis McEnaney**

(Mt. Vernon)

Elected to 5 1/2-year term; moved out of district

\* 2000 - 2001

**Sam Mateer**

(Mt. Vernon)

Appointed March 14 to fill position held by D. McEnaney; chose not to run in November election

\* 2001 - 2011

**William "Bill" Simpson**

(Benton)

Appointed September 18 to replace Dr. A. Patton; already duly elected to assume seat in November; re-elected to 6-year term

\* 2001 - 2008

**Norma O'Daniel**

(Mt. Vernon)

Elected to unexpired 4-year term; re-elected to 6-year term; resigned due to health

\* 2005 - 2013

**Bryan Drew**

(Benton)

Appointed to fill position held by C. Cox; twice elected to 6-yr. terms; November resignation following April election

\* 2008 - 2013

**Ed Cunningham**

(Mt. Vernon)

Appointed to fill position held by N. O'Daniel; elected to 6-yr. term in '09; moved out of district

\* 2009 - 2017

**Rick Marlow**

(Mt. Vernon)

Elected to fill original, two-year unexpired term of N. O'Daniel; re-elected to 6-year term

\* 2009 - 2010

**Dr. Donald E. Mitchell**

(McLeansboro)

Elected to six-year term, but stepped down over possible conflict of interest

\* 2010 - 2011

**Kelly Woodrow**

(Hamilton County)

Appointed to fill position held by D. Mitchell; chose not to run

\* 2011 - 2023

**John Kabat**

(Scheller)

Elected to 6-year term; re-elected to 6-year term

\* 2011 - 2023

**Randy Rubenacker**

(McLeansboro)

Elected to 6-year term; re-elected to 6-year term

\* 2011 - 2018

**Eric Black**

(Mt. Vernon)

Elected to fill unexpired 4-year term of K. Woodrow; re-elected to 6-year term; Resigned July 2018

\* 2013 - 2025

**Larry Manning**

(Belle Rive)

Elected to 6-year term; re-elected to 6-year term

\*2023 – 2029

**Tony Wielt**

(Whittington)

Elected to 6-year term

\* 2013 - 2027

**Dr. David S. Asbery**

(Mt. Vernon)

Appointed to fill position held by E. Cunningham; elected to 6-year term in 2015 and 2021.

\* 2013 – 2023 [See 1997-2009]

**Randall Crocker**

(Sesser)

Appointed to fill unexpired term of B. Drew; elected in 2015 to fill unexpired 4-year term; re-elected to 6-year term

\* 2017 – 2029

**Brian Dorris**

(Sesser)

Elected to 6-year term; re-elected to 6-year term

\* 2019 – 2027

**Jeff Jones**

(Whittington)

August 2018 Appointed to unexpired term of E. Black, elected to 6-year term

\*2023 – 2029

**Joe Coy**

(Wayne City)

Elected to 6-year term

\*2023 – 2029

**Ron Daniels**

(Belle Rive)

Elected to 6-year term



## College Mission

Rend Lake College provides educational opportunities across cultural and economic boundaries to the diverse student population we serve. We are committed to our students' success in achieving their educational goals and to meeting our community-focused program objectives. With Rend Lake College, student journeys start here.

## Value Statement

In serving our students and community, we are student-focused, authentic, and resourceful.

## Institutional Outcomes

Rend Lake College has adopted four essential learner outcomes, fundamental learning objectives embedded in every program of study, that all degree-completing students should be able to demonstrate. They are as follows:

**Critical Thinking:** Demonstrate the ability to think in a self-directed, reflective manner when understanding, evaluating and solving problems.

**Problem-Solving:** Demonstrate the ability to resolve computational problems.

**Oral Communication:** Demonstrate the ability to communicate clearly, concisely, and effectively through verbal and non-verbal language.

**Written Communication:** Demonstrate the ability to communicate clearly, concisely, and effectively through written language.

## Who We Are

The College history defines the College from the perspective of organization and assets; however, the personnel who operate within the college systems and manage those assets are the primary element for successful education. Rend Lake College believes all employees, regardless of their job description, are part of each student's education. Administrative, community outreach, student service, and physical plant personnel all support the student learning process. Our instructors are primary points of contact with the Rend Lake College educational experience. These educators are generally organized into four divisions: Allied Health, Applied Science & Technology, Arts & Sciences, and Community & Corporate Education.

Whether in a supporting role or as a direct point of contact, each college employee draws upon professional expertise and academic accomplishment to promote the success of every student.

## Who We Serve

Student-centered colleges are best defined by who they serve. An understanding of the distinctiveness of our College's student population allows us to effectively meet the goals of our programs and succeed in our mission.



## Diversity of Culture

Traditionally, Rend Lake College can be characterized as serving a relatively homogenous, rural, small-town culture. This population's cultural distinctiveness is centered on age and socioeconomic status more than diverse ethnic origin. As global connectivity broadens, so too does Rend Lake College's program offerings. We continue to serve groups with diverse characteristics, such as:

- Age
- Disability
- Gender
- National origin
- Race/ethnicity
- Religion
- Socioeconomic status
- Special populations

## Diversity of Purpose

Rend Lake College provides general, transfer, and career technical education to both traditional and non-traditional students through the use of reciprocal agreements; regional, state, and national education programs; dual-credit high school classes; and the endorsement of international students to help broaden our base. Rend Lake College offers skill and trade opportunities for students seeking employment and economic mobility. Additionally, Rend Lake College provides professional and personal fulfillment as well as growth through community and corporate education classes.

Often, an individual's purpose for engaging with the college is a combination of factors such as:

- Discovery / Curiosity
- Educational Requirements
- Enrichment / Hobby
- Healthy Lifestyle
- Lifelong Learning
- New / Enhanced skills
- Retraining

## Definition of Equity

Equity is the guarantee of fair treatment, access, opportunity and advancement for all students, faculty, and staff, while at the same time striving to identify and eliminate barriers that have prevented the full participation of some groups.

## Neurodiversity Statement

Rend Lake College values neurodiversity, including conditions such as autism, ADHD, dyslexia, and dyspraxia, as a crucial aspect of human variation that enhances our educational journey and community. Our commitment is to foster a supportive environment where neurodivergent individuals are acknowledged, respected, and enabled to unleash their full capabilities.

Working together, we can create a brighter future for all individuals, including those with neurodivergent conditions, by providing them with the necessary resources, support, and opportunities for success in and out of the classroom. Our commitment to embracing neurodiversity and learning more about its impact will bring positive outcomes for everyone involved.



## Common Outcome

Regardless of the diverse cultural backgrounds, purposes or origins of our constituents, Rend Lake College serves each individual equally with an open admission policy and an opportunity for success. Furthermore, Rend Lake College is united by the shared commitment of students, faculty, staff, and community to meet its institutional, educational, and program objectives.

## Fact Book

The Rend Lake College Fact Book is organized into nine sections: Tuition and Fees, Students, Student Demographics, Finances and Financial Aid, Retention, Completion and Graduation Rates, Student Consumer Information, ICCB Facts and Figures, Internal Affairs, RLC Foundation. An electronic version of the Fact Book is available on our website at [www.rlc.edu](http://www.rlc.edu).

The Fact Book is compiled by using information from the Illinois Community College Board; IPEDS; US Census Bureau; Department of Education; our internal student information system; and information collected from our division and department supervisors.

## The Students

Community colleges serve close to half of the undergraduate students in the United States. The comprehensive mission of community colleges makes them attractive to a broad range of people who seek particular programs or special opportunities of interest.

We are proud to provide access to education for many traditional and non-traditional students, such as adults who are working while enrolled. We continue to serve students who take specific courses to get a head start in their college educational goals.

Rend Lake College is a diverse institution that serves a variety of needs. Our students include those that are attending to upgrade their skills for a particular job, students who are pursuing an associate degree or certificate, students who are planning to transfer to a four-year institution, and students who are pursuing a hobby or personal interest.

## The Faculty and Staff

The faculty and staff are committed to providing the education and services that our students deserve. Students are far more than simply numbers at Rend Lake College.

We rely on a blend of full-time and part-time faculty to offer a broad array of courses to meet varying student curricular and scheduling needs. Adjunct faculty members have been a part of our faculty due to their technical skills and practical knowledge that are beneficial to our students. We value their expertise and workplace experiences to keep curricula fresh.

Staff form the backbone of all community colleges. Without the technical, professional, and clerical staff, our institution would not be able to perform the vital function of educating and assisting our students.

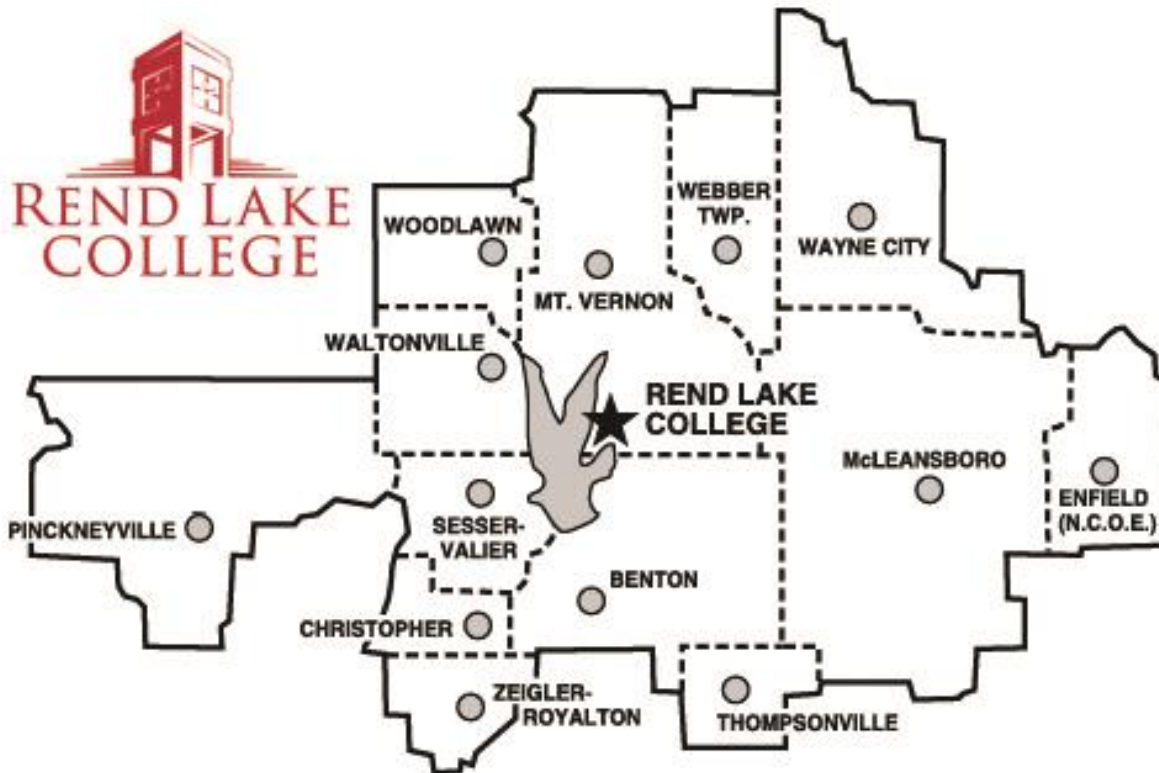




## The Organization and District

The Rend Lake College (District 521) is located on the east shore of Rend Lake, the second-largest man-made lake in the state, with access provided by Interstate 57 and State Route 37. The college is centrally located within the community college district it serves.

Our district was established July 1, 1967, and covers portions of eight counties in Southern Illinois. This includes the main portions of Franklin, Hamilton, Jefferson and Perry counties; large portions of Wayne and White counties; and small, unpopulated portions of Washington and Williamson counties. The main campus is home to 19 buildings, with two satellite campuses, the Rend Lake College MarketPlace in Mt. Vernon and Rend Lake College Murphy-Wall Campus in Pinckneyville.



Rend Lake College is dedicated to providing its students with preparation for entry into the job market and a solid academic base for transferring to a baccalaureate-granting institution with the current offerings of 100+ degree and certificate programs.

There are 13 public high schools served by the college:

- Benton Consolidated High School
- Christopher High School
- Hamilton County High School
- Mt. Vernon Township High School
- Norris City-Omaha-Enfield High School
- Pinckneyville Community High School
- Sesser-Valier High School
- Thompsonville High School
- Waltonville High School
- Wayne City High School
- Webber Township High School
- Woodlawn High School
- Zeigler-Royalton High School



## District Information

### Population by County

County	2018	2019	2020	2021	2022	5YR AVG	
Franklin County, Illinois	39561	38469	37804	37442	37242	38103.6	
Hamilton County, Illinois	8457	8116	7993	7911	7984	8092.2	
Jefferson County, Illinois	38827	37684	37116	36877	36400	37380.8	
Perry County, Illinois	22350	20916	20945	20985	20588	21156.8	
Wayne County, Illinois	16760	16215	16179	15963	15872	16197.8	
White County, Illinois	14665	13537	13877	13784	13614	13895.4	
Washington County, Illinois	14716	13887	13761	13655	13643	13932.4	
Williamson County, Illinois	66357	66597	67153	66879	66695	66736.2	

Source: US Census Bureau/Quick Facts

### District Population

	2018	2019	2020	2021	2022	5YR AVG	
Total Population	87727	87211	86116	85521	84742	86263	
Age 16 & Older	70854	70502	69727	69165	68755	69800.6	

Source: ICCB District Census Data.

### Unemployment Rates by County

	2018	2019	2020	2021	2022	5YR AVG	
Franklin	6.1%	5.4%	10.5%	6.6%	5.2%	6.8%	
Hamilton	4.3%	3.9%	6.7%	4.3%	3.4%	4.5%	
Jefferson	5.2%	4.6%	10.1%	6.2%	4.6%	6.1%	
Perry	5.8%	5.1%	9.4%	5.8%	4.9%	6.2%	
Wayne	5.5%	4.8%	8.3%	4.7%	3.9%	5.4%	
White	4.1%	3.8%	7.6%	5.0%	3.9%	4.9%	
<b>Small Parts of:</b>							
Washington	2.9%	2.5%	5.3%	3.0%	2.4%	3.2%	
Williamson	5.0%	4.3%	8.7%	5.5%	4.3%	5.6%	

Source: US Bureau of Labor Statistics – Annual Unemployment Rates



### District Poverty Rates by County

	2017	2018	2019	2020	2021	5YR AVG	
<b>U.S.</b>	<b>13.40%</b>	<b>13.10%</b>	<b>12.30%</b>	<b>11.90%</b>	<b>12.80%</b>	<b>12.70%</b>	
<b>Illinois</b>	<b>12.50%</b>	<b>12.10%</b>	<b>11.40%</b>	<b>11.00%</b>	<b>12.10%</b>	<b>11.82%</b>	
Franklin	19.50%	19.40%	16.40%	15.50%	16.50%	17.46%	
Hamilton	12.90%	12.30%	12.70%	13.00%	13.20%	12.82%	
Jefferson	17.40%	16.30%	14.90%	12.50%	15.30%	15.28%	
Perry	15.60%	17.80%	14.40%	15.10%	16.60%	15.90%	
Wayne	14.00%	13.80%	13.10%	12.90%	14.30%	13.62%	
White	15.30%	12.30%	14.50%	15.40%	15.70%	14.64%	
<b>Small Parts of:</b>							
Washington	8.10%	7.40%	8.10%	7.60%	8.50%	7.94%	
Williamson	19.20%	18.80%	16.40%	13.90%	14.70%	16.60%	

Source: SAIPE: US Census Bureau

### District High School Graduation Count

	2019	2020	2021	2022	2023	5YR AVG	
<b>Benton Consolidated High School</b>	133	134	104	143	112	125	
<b>Christopher High School</b>	46	56	53	57	51	53	
<b>Hamilton County High School</b>	89	92	70	89	72	82	
<b>Mt. Vernon High School</b>	248	251	247	261	251	252	
<b>Norris City-Omaha-Enfield High School</b>	43	38	46	37	50	43	
<b>Pinckneyville Community High School</b>	99	87	97	110	98	98	
<b>Sesser-Valier High School</b>	45	43	40	42	42	42	
<b>Thompsonville High School</b>	30	17	13	24	26	22	
<b>Waltonville High School</b>	21	29	17	27	22	23	
<b>Wayne City High School</b>	34	39	40	28	32	35	
<b>Webber Township High School</b>	29	24	31	33	31	30	
<b>Woodlawn High School</b>	43	40	46	49	38	43	
<b>Zeigler-Royalton High School</b>	34	38	39	33	31	35	
<b>Total</b>	<b>894</b>	<b>888</b>	<b>843</b>	<b>933</b>	<b>856</b>	<b>883</b>	

Source: Guidance Counselors from respected High Schools



## COVID-19 (Coronavirus)

During the Spring 2020 semester, COVID-19, also known as Coronavirus, hit the United States and had an impact on the semester data. These impacts have been noted on each page that it has affected.

On March 13, 2020, Rend Lake College chose to close the campus for the remainder of the semester to protect its students, faculty, and staff. With the close of campus, some services on campus became unavailable and others transferred to the online community. Faculty and staff worked to make the transition to fully online for the students as seamless as possible, as well assist faculty and staff to work from home. This continued during the summer 2020 term as well.

### FALL 2020

Rend Lake College provided more options for students to attend classes in the Fall of 2020. Classes were offered as online, hybrid, and hybrid flex models. Hybrid classes were partially face to face meetings with some online, or remote style, meetings. Hybrid flex provided students with the ability to come to the campus for class or remote during class time. Advising held virtual appointments to register students while the Bookstore provided shipping of textbooks to the student. Out-of-district tuition rates were waived for all courses that included an online component.

### SPRING 2021

Rend Lake College continued to provide the same instruction as the previous semester. Warrior Sports started to open up again, more students returned to campus, and a graduation ceremony for both RLC 2020 and 2021 graduates was held.

The \$20 online course fee was waived for FY 2021 for all students.

For more information about the steps taken or what changes were made during the COVID-19 pandemic, please visit [www.rlc.edu/coronavirus](http://www.rlc.edu/coronavirus).



## **Section I: Tuition and Fees**





## Tuition and Fees

Current tuition rates for residents of the Rend Lake College district are published on our website, <https://www.rlc.edu/tuition>, and are published in our course schedules. Tuition rates are subject to change with Board of Trustees approval. Applicable fees, in addition to tuition, will also be charged to students who are associated with certain classes/programs.

In-district residents who are 60 years of age or older qualify as senior citizens, and are entitled to take college credit courses tuition-free. This does not include any fees charged for credit classes, nor does it include Community Education classes.

### Tuition per Credit Hour

	FY2019	FY2020*	FY2021	FY2022	FY2023**
In-District	\$110.00	\$110.00	\$110.00	\$110.00	\$110.00
Universal Fee	\$20.00	\$25.00	\$25.00	\$25.00	\$40.00
<b>Total Tuition &amp; Fees</b>	<b>\$130.00</b>	<b>\$135.00</b>	<b>\$135.00</b>	<b>\$135.00</b>	<b>\$150.00</b>
Out of District	\$175.00	\$175.00	\$175.00	\$175.00	\$220.00
Universal Fee	\$20.00	\$25.00	\$25.00	\$25.00	\$40.00
<b>Total Tuition &amp; Fees</b>	<b>\$200.00</b>	<b>\$200.00</b>	<b>\$200.00</b>	<b>\$200.00</b>	<b>\$260.00</b>
Out of State	\$200.00	\$200.00	\$200.00	\$200.00	\$220.00
Universal Fee	\$20.00	\$25.00	\$25.00	\$25.00	\$40.00
<b>Total Tuition &amp; Fees</b>	<b>\$220.00</b>	<b>\$225.00</b>	<b>\$225.00</b>	<b>\$225.00</b>	<b>\$260.00</b>
Out of Country	\$200.00	\$200.00	\$200.00	\$200.00	\$220.00
Universal Fee	\$20.00	\$25.00	\$25.00	\$25.00	\$40.00
<b>Total Tuition &amp; Fees</b>	<b>\$220.00</b>	<b>\$225.00</b>	<b>\$225.00</b>	<b>\$225.00</b>	<b>\$260.00</b>

\*Required fees for Summer 2019 were \$20, then Fall semester was increased to \$25.

\*\*Instructional Support Fee includes costs associated with textbooks, technology costs which directly support academic functions, and other general costs associated with academic services of the College. Instructional Fee did not include textbooks until FY22.

Source: Business Office – Tuition and Fee rate schedule

### Tuition Comparison

	2019	2020	2021	2022	2023	5YR AVG	
IECC	\$92.00	\$100.00	\$100.00	\$100.00	\$110.00	\$100.40	
John A Logan	\$115.00	\$125.00	\$133.00	\$140.00	\$145.00	\$131.60	
Rend Lake	\$110.00	\$110.00	\$110.00	\$110.00	\$110.00	\$110.00	
Shawnee	\$115.00	\$125.00	\$125.00	\$125.00	\$140.00	\$126.00	
Southeastern	\$106.00	\$106.00	\$106.00	\$106.00	\$106.00	\$106.00	
SWIC	\$113.00	\$113.00	\$113.00	\$118.00	\$120.00	\$115.40	



## Cost of Attendance

The student budget for the year used to estimate Cost of Attendance is as follows for a full-time, in-district students during the nine-month school year. Living expenses, transportation, and miscellaneous expenses vary greatly with each student’s individual situation. However, for financial aid purposes, these costs are/were estimated as follows:

	2018	2019	2020	2021	2022*
<b>In District (Books and Supplies)</b>	\$5,700	\$5,850	\$5,850	\$5,850	\$4,900
<b>Out of District (Books and Supplies)</b>	\$7,650	\$7,800	\$7,800	\$7,800	\$6,850
<b>Out of State (Books and Supplies)</b>	\$8,400	\$8,550	\$8,550	\$8,550	\$7,600
<b>Off-campus in-district (not with family) (total)</b>	\$18,288	\$18,882	\$20,150	\$20,938	\$20,388
<b>Off-campus out of district (not with family) (total)</b>	\$20,238	\$20,832	\$22,100	\$22,888	\$22,338
<b>Off-campus out of state (not with family) (total)</b>	\$20,988	\$21,582	\$22,850	\$23,638	\$23,088
<b>Off-campus in-district (with family) (total)</b>	\$10,000	\$11,350	\$11,290	\$11,226	\$10,676
<b>Off-campus out of district (with family) (total)</b>	\$11,950	\$12,300	\$13,240	\$13,176	\$12,626
<b>Off-campus out of state (with family) (total)</b>	\$12,700	\$13,050	\$13,990	\$13,926	\$13,376

\*In Fall 2022, tuition fees included book rentals.

(Off-campus, not with family includes living expenses and other expenses)

Source: NCES Education Statistics, October 30, 2023.

### Lab/Course Fees

Lab and course fees are available for viewing at <https://www.rlc.edu/financial-aid/course-fees>.

### Special Program Fees

Students in select programs will have additional expenses depending on the program in which they are enrolled. These expenses include text and workbooks, and pertinent supply fees. More information is available at [www.rlc.edu/program-cost-sheets](http://www.rlc.edu/program-cost-sheets).



## Miscellaneous Fees and Options

Listed below are common fees and not intended to be an all-inclusive list.

### Textbooks

The RLC Bookstore and Retail Store is located on the ground floor of the Academic Building. The All-Inclusive Program provides many books to students with the rental charges being included within the fees. Students have the option to opt-out of this program, but will be responsible for providing their own books. Some books for specific classes and programs are excluded from the All-Inclusive Program and must be purchased.

### Transcript Fee

Student official transcripts are \$5.25 per paper transcript and \$6.25 per each electronic transcript. All requests are processed online at [www.rlc.edu](http://www.rlc.edu).

### Payment Plan

The college does offer payment plans to students that provide a low-cost option for budgeting tuition and fees. Payments can be authorized from a checking or savings or by a credit card and allows students to schedule payments over a predetermined time period depending on when registration is completed.

### Non-Payment Fee

If dropped for non-payment, a \$25 non-refundable service charge and a hold will be placed on the student's account. Before a student is allowed to re-enroll, the outstanding balance on his/her account must be paid in full.

### Parking and/or Speeding fines

Vehicles must be parked inside the lines of the parking space. Parking tickets are \$25. Speeding tickets are \$25 up to 5 mph over posted speed limit. An additional \$25 fine is given if speed is over 5 mph beyond posted speed limit. Unauthorized parking in restricted spaces will result in a parking ticket. The fine for unauthorized parking in a handicapped space is \$250. Speeding tickets issued within 500 ft. of posted speed limits near the Rend Lake College Foundation Children's Center will be double the ticket fees.

### Fines and Financial Obligations

Students who have past due financial obligations to Rend Lake College, including but not limited to library fines or charges, will not be permitted to register for classes or receive a transcript until satisfactory arrangements have been made to meet those obligations. Balances due at the conclusion of the semester will be considered past-due. Past-due accounts will be submitted to a debt recovery program. This may result in the garnishments of payments made to individuals with past-due accounts including, but not limited to, paychecks, tax refunds, commercial payments, and lottery winnings.



## Section II: Students



## Students

### Headcount by Enrollment Status

	FY2018						FY2019					
	Summer 17		Fall 17		Spring 18		Summer 18		Fall 18		Spring 19	
Full-Time	411	31.07%	1213	38.34%	1176	38.06%	455	37.08%	1237	41.47%	1167	39.92%
Part-Time	912	68.93%	1951	61.66%	1914	61.94%	772	62.92%	1746	58.53%	1756	60.08%
Total	1323	100.00%	3164	100.00%	3090	100.00%	1227	100.00%	2983	100.00%	2923	100.00%

	FY2020						FY2021					
	Summer 19		Fall 19		Spring 20*		Summer 20		Fall 20		Spring 21	
Full-Time	378	39.25%	1127	40.47%	987	41.80%	297	36.22%	931	42.98%	901	43.19%
Part-Time	585	60.75%	1658	59.53%	1374	58.20%	523	63.78%	1235	57.02%	1185	56.81%
Total	963	100.00%	2785	100.00%	2361	100.00%	820	100.00%	2166	100.00%	2086	100.00%

	FY2022						FY2023					
	Summer 21		Fall 21		Spring 22		Summer 22		Fall 22		Spring 23	
Full-Time	342	39.22%	954	43.30%	931	39.82%	380	43.18%	1010	45.35%	883	39.74%
Part-Time	530	60.78%	1249	56.70%	1407	60.18%	500	56.82%	1217	54.65%	1339	60.26%
Total	872	100.00%	2203	100.00%	2338	100.00%	880	100.00%	2227	100.00%	2222	100.00%

Source: ICCB A1

Headcount numbers by term are unduplicated, but total FY are duplicated as students could be enrolled for more than one semester during same FY.





## Headcount Attempted vs. Earned

<b>FY19</b>	<b># of Students Enrolled</b>	<b># of Students that earned hours</b>	<b>% of students that earned hours</b>	<b># of Students that didn't earn hours</b>	<b>% of Students that didn't earn hours</b>
Summer 18	1227	1128	91.93%	99	8.07%
Fall 18	2983	2801	93.90%	182	6.10%
Spring 19	2923	2759	94.39%	164	5.61%
Total					19.78%

<b>FY20</b>	<b># of Students Enrolled</b>	<b># of Students that earned hours</b>	<b>% of students that earned hours</b>	<b># of Students that didn't earn hours</b>	<b>% of Students that didn't earn hours</b>
Summer 19	963	890	92.42%	73	7.58%
Fall 19	2785	2507	90.02%	278	9.98%
Spring 20**	2361	2163	91.61%	198	8.39%
Total					25.95%

<b>FY21</b>	<b># of Students Enrolled</b>	<b># of Students that earned hours</b>	<b>% of students that earned hours</b>	<b># of Students that didn't earn hours</b>	<b>% of Students that didn't earn hours</b>
Summer 20**	820	741	90.37%	79	9.63%
Fall 20**	2166	1998	92.24%	168	7.76%
Spring 21**	2086	1947	93.34%	139	6.66%
Total					24.05%

<b>FY22</b>	<b># of Students Enrolled</b>	<b># of Students that earned hours</b>	<b>% of students that earned hours</b>	<b># of Students that didn't earn hours</b>	<b>% of Students that didn't earn hours</b>
Summer 21	872	822	94.27%	50	5.73%
Fall 21	2203	2048	92.96%	155	7.04%
Spring 22	2338	2185	93.46%	153	6.54%
Total					19.31%

<b>FY23</b>	<b># of Students Enrolled</b>	<b># of Students that earned hours</b>	<b>% of students that earned hours</b>	<b># of Students that didn't earn hours</b>	<b>% of Students that didn't earn hours</b>
Summer 22	880	811	92.16%	69	7.84%
Fall 22	2227	2059	92.46%	168	7.54%
Spring 23	2222	2104	94.69%	118	5.31%
Total					20.70%

\*\*COVID-19



## Credit Hours

### Total Credit Hours Attempted by Term

	FY2019			FY2020			FY2021			FY2022			FY2023		
	Summer 18	Fall 18	Spring 19	Summer 19	Fall 19	Spring 20	Summer 20	Fall 20	Spring 21	Summer 21	Fall 21	Spring 22	Summer 22	Fall 22	Spring 23
<b>Total by Term</b>	5065.0	26308.0	25520.5	4366.0	24168.5	21739.0	3521.0	19648.0	19741.0	3917.0	20777.0	20609.5	4098.5	21385.0	19184.0
<b>Total by FY</b>	56893.5			50273.5			42910			45303.5			44667.5		

Source: ICCB A1

Note: There may be differences in hours between the SUSR and the A1 reports due to changes/corrections being made to accounts in the system, timing issues, and to improvements made in our reporting efficiencies.

### Total Credit Hours Earned by Term

	FY2019			FY2020			FY2021			FY2022			FY2023		
	Summer 18	Fall 18	Spring 19	Summer 19	Fall 19	Spring 20	Summer 20	Fall 20	Spring 21	Summer 21	Fall 21	Spring 22	Summer 22	Fall 22	Spring 23
<b>Total by Term</b>	4390.5	23173.0	22419.0	3823.0	20903.5	18698.5	3186.0	16898.0	17638.0	3535.5	18171.0	18074.5	3633.0	18256.0	17178.5
<b>Total by FY</b>	49982.5			43425			37722			39781			39067.5		
<b>Percent Hours Earned</b>	87.85%			86.38%			87.91%			87.81%			87.46%		

Source: ICCB A1

Note: There may be differences in hours between the SUSR and the A1 reports due to changes/corrections being made to accounts in the system, timing issues, and to improvements made in our reporting efficiencies.

### FTE (full-time equivalency) by Fiscal Year

FY2019	FY2020	FY2021	FY2022	FY2023
1896	1676	1430	1510	1489

Source: IPEDS 12-month Enrollment Report.

### Total Reimbursable Credit Hours (by term)

	FY2018			FY2019			FY2020		
	Summer 17	Fall 17	Spring 18	Summer 18	Fall 18	Spring 19	Summer 19	Fall 19	Spring 20
<b>Hours by Term</b>	4691.5	24674	24359	4590.5	24754	23848	3990.5	22540	20297
<b>Total FY</b>	53723.5			53191.5			46827.5		

	FY2021			FY2022			FY2023		
	Summer 20	Fall 20	Spring 21	Summer 21	Fall 21	Spring 22	Summer 22	Fall 22	Spring 23
<b>Hours by Term</b>	3260.5	18281	18722	3709.5	19361	19426	3768.5	19726	18090
<b>Total FY</b>	40263.5			42496.5			41584.5		

Source: ICCB SUSR Report



# Dual Credit by Fiscal Year and High School

	Benton	Christopher	Hamilton County	Henry	Mt Vernon	Marion	Pickloesville	Sesser-Valer	Thompsonville	Waltonville	Wayne City	Webber	West Frankfort	Woodlawn	Ziegler	Franklin County Edge	Jefferson and Perry County CBO	Perry County Edge	TOTAL
<b>FY 2019</b>	STUDENTS ENROLLED (DUPLICATED) 602	135	357	6	665	5	406	57	139	164	173	180	15	140	105	26	38	16	3229
	TOTAL CREDIT HOURS 1849	433	1099	12	1719	15	1332	117	455	481	528	568	30	455	330	116	170	71	9800
	SAVINGS TO STUDENTS (\$110+ PER CREDIT HOUR) \$203,390.00	\$49,830.00	\$120,890.00	\$ 1,320.00	\$189,090.00	\$1,650.00	\$146,520.00	\$12,870.00	\$50,050.00	\$52,910.00	\$58,080.00	\$62,480.00	\$3,300.00	\$50,050.00	\$36,300.00	\$12,760.00	\$18,700.00	\$7,810.00	\$1,078,000.00
<b>FY 2020</b>	STUDENTS ENROLLED (DUPLICATED) 1208	384	214	308	2055.5	47	1329	69	320	314	399	440	0	251	244	103	131	63	7829.5
	SAVINGS TO STUDENTS (\$110+ PER CREDIT HOUR) \$132,880.00	\$42,240.00	\$ 23,540.00	\$33,880.00	\$227,205.00	\$5,170.00	\$146,190.00	\$ 7,390.00	\$35,200.00	\$34,540.00	\$37,290.00	\$48,400.00	\$ -	\$27,610.00	\$26,840.00	\$11,330.00	\$14,410.00	\$6,930.00	\$ 861,245.00
<b>FY 2021</b>	STUDENTS ENROLLED (DUPLICATED) 1782	234	388	0	1337	78	1377	24	133	126	441	420	0	357	190	0	54	0	6907
	SAVINGS TO STUDENTS (\$110+ PER CREDIT HOUR) \$196,020.00	\$23,740.00	\$ 42,680.00	\$ -	\$147,070.00	\$8,580.00	\$151,470.00	\$ 2,640.00	\$16,830.00	\$13,860.00	\$48,510.00	\$46,200.00	\$ -	\$39,270.00	\$20,900.00	\$ -	\$ 5,940.00	\$ -	\$ 759,770.00
<b>FY 2022</b>	STUDENTS ENROLLED (DUPLICATED) 1141	327	643	0	1561	70	1379	434	126	128	387	471	0	350	134	54	107	0	7312
	SAVINGS TO STUDENTS (\$110+ PER CREDIT HOUR) \$125,510.00	\$35,970.00	\$ 70,730.00	\$ -	\$171,710.00	\$7,700.00	\$151,690.00	\$47,740.00	\$13,860.00	\$14,080.00	\$42,570.00	\$51,810.00	\$ -	\$38,500.00	\$14,740.00	\$ 9,400.00	\$11,770.00	\$ -	\$ 804,320.00
<b>FY 2023</b>	STUDENTS ENROLLED (DUPLICATED) 923	224	505	0	1431	10	1434	214	142	172	327	593	0	266	116	72	152	0	6357
	SAVINGS TO STUDENTS (\$110+ PER CREDIT HOUR) \$101,530.00	\$24,640.00	\$ 55,550.00	\$ -	\$157,410.00	\$1,100.00	\$157,740.00	\$23,540.00	\$15,620.00	\$18,920.00	\$35,970.00	\$65,230.00	\$ -	\$29,260.00	\$12,760.00	\$ 7,920.00	\$16,720.00	\$ -	\$ 699,270.00

Source: Dual Credit Headcount by High School Report (RLC Custom Reports). Some schools were added and have no previous data. These areas are noted by the star (\*).



## Dual Credit Textbook Savings Report

	BENTON	CHRISTOPHER	HAMILTON CO.	MT. VERNON	PINKNEYVILLE	SESSER-VALER	THOMPSONVILLE	WALTONVILLE	WANEGCTY	WEBBER	WOODLAWN	ZEGLER	TOTALS
<b>FY 2019</b>													
TEXTS	613	217	426	638	534	42	180	177	230	182	186	111	3536
CHARGES	\$ 7,404.15	\$ 2,170.00	\$ 4,956.00	\$ 6,380.00	\$ 5,340.00	\$ 420.00	\$ 1,800.00	\$ 1,770.00	\$ 2,300.00	\$ 1,820.00	\$ 1,860.00	\$ 1,110.00	\$ 37,330.15
VALUE	\$83,537.73	\$ 27,288.56	\$ 57,669.05	\$ 103,352.50	\$ 77,635.03	\$ 4,819.50	\$ 17,799.24	\$ 22,075.77	\$ 32,126.04	\$ 25,023.10	\$ 11,318.97	\$ 12,182.82	\$ 474,828.31
											<b>TOTAL SAVINGS</b>		<b>\$ 437,498.16</b>
<b>FY 2020</b>													
TEXTS	401	182	219	667	460	42	105	116	145	154	99	77	2667
CHARGES	\$ 4,569.65	\$ 1,820.00	\$ 3,107.20	\$ 6,670.00	\$ 4,600.00	\$ 420.00	\$ 1,050.00	\$ 1,160.00	\$ 1,450.00	\$ 1,540.00	\$ 990.00	\$ 770.00	\$ 28,146.85
VALUE	\$65,394.78	\$ 26,001.85	\$ 18,600.75	\$ 100,743.50	\$ 69,372.41	\$ 4,900.50	\$ 12,783.28	\$ 14,031.08	\$ 19,617.77	\$ 20,670.98	\$ 11,536.40	\$ 8,879.72	\$ 372,533.02
											<b>TOTAL SAVINGS</b>		<b>\$ 344,386.17</b>
<b>FY 2021</b>													
TEXTS	461	94	111	544	550	21	54	43	297	163	104	111	2553
CHARGES	\$ 5,799.30	\$ 940.00	\$ 2,803.20	\$ 5,440.00	\$ 5,500.00	\$ 210.00	\$ 540.00	\$ 430.00	\$ 2,970.00	\$ 1,630.00	\$ 1,040.00	\$ 1,110.00	\$ 28,412.50
VALUE	\$78,505.12	\$ 17,724.40	\$ 20,313.90	\$ 79,156.01	\$ 84,216.70	\$ 2,409.75	\$ 5,727.36	\$ 6,261.91	\$ 34,828.70	\$ 2,152.00	\$ 8,749.80	\$ 9,527.84	\$ 349,573.49
											<b>TOTAL SAVINGS</b>		<b>\$ 321,160.99</b>
<b>FY 2022</b>													
TEXTS	309	98	215	778	450	83	79	48	145	187	123	57	2572
CHARGES	\$17,304.00	\$ 980.00	\$ 4,475.40	\$ 7,780.00	\$ 5,520.00	\$ 830.00	\$ 2,430.52	\$ 480.00	\$ 1,810.00	\$ 2,350.00	\$ 1,543.56	\$ 570.00	\$ 46,073.48
VALUE	\$48,396.80	\$ 15,998.71	\$ 29,799.80	\$ 135,163.60	\$ 74,820.47	\$ 13,804.68	\$ 8,698.90	\$ 13,001.60	\$ 20,040.96	\$ 22,193.30	\$ 16,315.20	\$ 5,554.21	\$ 403,788.23
											<b>TOTAL SAVINGS</b>		<b>\$ 357,714.75</b>
<b>FY 2023</b>													
TEXTS	229	78	173	598	453	52	52	78	167	230	103	46	2259
CHARGES	\$ 3,082.45	\$ 780.00	\$ 2,944.00	\$ 5,980.00	\$ 6,050.00	\$ 26,260.00	\$ 775.54	\$ 4,615.00	\$ 1,670.00	\$ 3,140.00	\$ 1,390.00	\$ 885.00	\$ 57,571.99
VALUE	\$36,246.72	\$ 12,021.20	\$ 26,848.17	\$ 117,822.24	\$ 72,021.72	\$ 5,748.44	\$ 6,274.36	\$ 8,699.58	\$ 24,256.23	\$ 27,651.52	\$ 13,198.80	\$ 4,978.96	\$ 355,767.94
											<b>TOTAL SAVINGS</b>		<b>\$ 298,195.95</b>

Note: Dual Credit textbooks are charged at the rental rate of \$10 per text. Not all texts are rented, some must be purchased.



### Dual Credit & Dual Enrollment

	2018			2019			2020							
	Summer 2017	Fall 2017	Spring 2018	Summer 2018	Fall 2018	Spring 2019	Summer 2019	Fall 2019	Spring 2020					
Dual Credit	Students 0	Hours 0	Students 720	Hours 3880	Students 697	Hours 4008	Students 0	Hours 0	Students 0	Hours 0	Students 700	Hours 3201	Students 721	Hours 3594
Dual Enrollment	Students 133	Hours 660.5	Students 43	Hours 134	Students 45	Hours 215.5	Students 137	Hours 636.5	Students 22	Hours 47.5	Students 23	Hours 83.5	Students 108	Hours 490.5
Dual Credit & Dual Enrollment	Students 0	Hours 0	Students 33	Hours 308	Students 101	Hours 1029.5	Students 0	Hours 0	Students 85	Hours 758.5	Students 86	Hours 1047.5	Students 0	Hours 0
	Students 0	Hours 0	Students 33	Hours 308	Students 101	Hours 1029.5	Students 0	Hours 0	Students 85	Hours 758.5	Students 86	Hours 1047.5	Students 0	Hours 0

	2021			2022			2023							
	Summer 2020	Fall 2020	Spring 2021	Summer 2021	Fall 2021	Spring 2022	Summer 2022	Fall 2022	Spring 2023					
Dual Credit	Students 0	Hours 0	Students 587	Hours 2915	Students 598	Hours 3193	Students 6	Hours 18	Students 18	Hours 617	Students 25	Hours 121.5	Students 19	Hours 104.5
Dual Enrollment	Students 110	Hours 468	Students 60	Hours 2915	Students 24	Hours 132	Students 89	Hours 444	Students 27	Hours 74	Students 74	Hours 718.5	Students 138	Hours 1528.5
Dual Credit & Dual Enrollment	Students 0	Hours 0	Students 51	Hours 505	Students 89	Hours 1082.5	Students 4	Hours 27	Students 27	Hours 74	Students 74	Hours 718.5	Students 138	Hours 1528.5
	Students 0	Hours 0	Students 51	Hours 505	Students 89	Hours 1082.5	Students 4	Hours 27	Students 27	Hours 74	Students 74	Hours 718.5	Students 138	Hours 1528.5

Source: RLC Custom Reports

### Dual Credit & Dual Enrollment by High School

	2019			2020			2021			2022			2023		
	Dual Credit	Dual Enrollment	Both DC/DE	Dual Credit	Dual Enrollment	Both DC/DE	Dual Credit	Dual Enrollment	Both DC/DE	Dual Credit	Dual Enrollment	Both DC/DE	Dual Credit	Dual Enrollment	Both DC/DE
Barton Consolidated High School	121	2	47	170	100	33	144	104	42	151	89	30	118	10	15
Christopher High School	27	2	23	52	31	23	60	31	11	47	27	6	33	3	6
Hamilton County High School	75	10	27	112	72	11	95	57	10	83	42	7	77	12	22
Mr. Vernon High School	252	5	34	291	280	29	321	191	7	236	197	31	235	2	27
Norris City-Omaha-Enfield High School	-	1	-	1	-	2	2	-	3	3	-	-	0	1	2
Pinckeyville Community High School	88	7	20	115	88	15	110	81	31	129	105	4	122	103	210
Sesser-Valter High School	32	3	11	46	15	6	28	8	11	19	66	-	76	38	48
Thompsonville High School	18	-	11	29	16	6	32	6	1	13	5	10	15	13	14
Waltonville High School	31	1	10	42	22	10	44	20	5	25	14	7	21	17	5
Wayne City High School	36	-	3	39	31	3	38	34	3	37	16	2	34	41	47
Webber Township High School	27	-	5	32	30	4	35	22	1	26	15	2	29	33	10
Woodlawn High School	30	1	15	46	26	5	36	35	10	45	36	2	50	38	46
Zeigler-Royalton High School	22	2	15	39	20	14	35	25	3	32	18	3	26	22	25
Unknown High School	-	7	-	7	3	3	15	3	21	24	2	7	10	25	38
Other High Schools (Out-of-District)	21	7	2	30	31	4	39	19	8	27	17	1	19	12	19
Total	780	48	223	1051	765	167	1014	636	106	897	649	48	788	147	1057



## Dual Credit & Dual Enrollment Students

	2019		2020		2021		2022		2023	
	Attended	Did Not Attend	Attended	Did Not Attend	Attended	Did Not Attend	Attended	Did Not Attend	Attended	Did Not Attend
Benton Consolidated High School	146	24	106	38	119	32	77	48	112	31
Christopher High School	42	10	44	16	30	17	38	7	27	15
Hamilton County High School	96	16	71	24	69	14	65	16	84	27
Mt. Vernon High School	203	88	231	90	195	41	168	67	164	82
Norris City-Omaha-Enfield High School	1	0	0	2	3	0	0	0	2	0
Pinckneyville Community High School	73	42	67	43	98	31	81	41	163	154
Sesser-Valier High School	33	13	19	9	14	5	50	26	33	15
Thompsonville High School	26	3	18	4	7	6	13	2	13	1
Waltonville High School	35	7	24	10	20	5	20	1	18	4
Wayne City High School	29	10	28	10	24	13	23	11	39	8
Webber Township High School	28	4	26	9	21	5	24	5	31	13
Woodlawn High School	39	19	29	7	36	9	38	12	32	14
Zeigler-Royalton High School	32	7	25	10	22	10	16	10	18	7
<b>Total</b>	<b>783</b>	<b>243</b>	<b>688</b>	<b>272</b>	<b>655</b>	<b>188</b>	<b>613</b>	<b>246</b>	<b>736</b>	<b>371</b>
<b>Percentage</b>	<b>76.31%</b>	<b>23.68%</b>	<b>71.67%</b>	<b>28.33%</b>	<b>77.70%</b>	<b>22.30%</b>	<b>71.36%</b>	<b>28.63%</b>	<b>66.49%</b>	<b>33.51%</b>

This shows the number of Dual Credit, Dual Enrollment, or both students by high school that came to RLC the following year.

## Online Course Offerings/Enrollment

	FY2019			FY2020			FY2021**			FY2022			FY2023		
	Summer 18	Fall 18	Spring 19	Summer 19	Fall 19	Spring 20*	Summer 20	Fall 20	Spring 20	Summer 21	Fall 21	Spring 22	Summer 22	Fall 22	Spring 23
# of courses offered	26	52	54	22	51	60	70	147	169	63	133	103	63	88	75
# of students enrolled	403	760	943	369	848	1082	1131	3942	3647	556	1626	1526	596	1638	1214
Credit hours generated	1186	2183.5	2567	1089	2412	2955.5	2726.5	11472.5	10545	1655.5	4600	4425	1716.5	4605	3474

## Hybrid Course Offerings/Enrollment

	FY2019			FY2020			FY2021**			FY2022			FY2023		
	Summer 18	Fall 18	Spring 19	Summer 19	Fall 19	Spring 20*	Summer 20	Fall 20	Spring 21	Summer 21	Fall 21	Spring 22	Summer 22	Fall 22	Spring 23
# of courses offered	18	38	50	13	37		9	119	99	16	26	25	12	30	33
# of students enrolled	127	321	379	201	317	See Below	123	1791	1345	119	269	318	131	379	382
Credit hours generated	351	827	1163	586	834		533	7008.5	5562.5	439	806	1064	540	1258	1295

Spring 20	Hybrid	Hybrid-Interactive
# of courses offered	4	33
# of students enrolled	9	301
Credit hours generated	15	919

\*COVID-19 – Some classes were taken from Hybrid to Hybrid-Interactive.

\*\*Due to COVID-19, campus was closed except for labs. All classes were moved to online or hybrid.

Source: RLC Custom Report, Hybrid and Online Classes



## Section Size

Class Size	FY2019			FY2020			FY2021			FY2022			FY2023		
	Summer 18	Fall 18	Spring 19	Summer 19	Fall 19	Spring 20	Summer 20	Fall 20	Spring 21	Summer 21	Fall 21	Spring 22	Summer 22	Fall 22	Spring 23
	Total Classes	Total Classes	Total Classes	Total Classes	Total Classes	Total Classes	Total Classes	Total Classes	Total Classes	Total Classes	Total Classes	Total Classes	Total Classes	Total Classes	Total Classes
2-9	120	270	289	72	198	233	54	202	256	78	155	181	84	219	227
10-19	39	223	222	38	157	168	29	174	159	20	139	127	32	158	152
20-29	26	123	108	7	87	59	18	66	63	4	53	46	17	98	88
30-39	5	26	19	4	25	17	9	21	24	2	12	8	5	22	16
40-49	1	6	6	0	7	6	1	11	8	1	3	7	0	6	6
50-99	0	6	4	0	5	3	0	3	3	0	3	3	0	6	2
100+	0	0	1	0	0	0	0	0	0	0	0	0	0	0	0

Source: Section Size Report

## Active Clubs

CLUB (Open & Membership)	SPONSOR
Agriculture	Kathy Helmers
Amateur Radio	Chris Edwards
Art Association	Melissa McClement-Engler
Chi Alpha	Jeannie Mitchell
CMYKlub-Graphic Design	Jennifer Tarantino-Linsin
Computer	Chris Edwards
Creative Writing	Peggy Davis
Culinary Arts	Jeff Fairbanks
E-Sports	Mark Jornd
Fellowship of Christian Athletes	Dave Ellingsworth
LGBTQA	Lynanne Page
Nursing	Sarah Hopfinger
Radiology	Holly Heisner
Rod Burners - Welding	Mike Meinert
Tabletop Gaming	Jeff Keen
Thespians	Tracey Webb
Veteran's Club	Lauren Turner
<b>ORGANIZATIONS (Closed/Selective Membership)</b>	<b>SPONSOR</b>
Archery	Donnie Millenbine
Lambda Nu	Holly Heisner
Phi Theta Kappa	Jena Jensik
Student Ambassadors	Vickie Shulte
Trap Shooting	Dennis "Doc" Lynch

Source: Henry "Buster" Leeck, Associate VP of Academic and Student Services – November 2023





## Academic Honors

A Full-time student whose grade point average is 3.5 or better is considered an honor student. Full-time students who compile a perfect 4.0 grade point average during the Fall or Spring semester will be named to the President’s List, while those students compiling between a 3.5 and 3.9 will be named to the Vice Presidents’ List. A student must have successfully completed all courses during the semester to be included on the President’s or the Vice Presidents’ List. Academic honors are announced shortly after the end of Fall and Spring semesters.

President's List	
FALL 2018	170
SPRING 2019	179
FALL 2019	147
SPRING 2020	179
FALL 2020	148
SPRING 2021	179
FALL 2021	145
SPRING 2022	174
FALL 2022	172
SPRING 2023	197

Vice Presidents' List	
FALL 2018	220
SPRING 2019	116
FALL 2019	203
SPRING 2020	242
FALL 2020	189
SPRING 2021	208
FALL 2021	179
SPRING 2022	222
FALL 2022	193
SPRING 2023	209

## Academic Warnings

A degree or certificate seeking student who is enrolled in three or more credit hours during the Fall or Spring semester and whose grade point average falls below 2.0 will be placed on Academic Probation.

A degree or certificate seeking student who was on Academic Probation during the previous Fall or Spring semester of enrollment and has a current semester and a cumulative GPA of less than 2.0 will be placed on Academic Suspension. Further sanctions will apply as outlined in the current catalog for both academic warnings.

Probation	
FALL 2018	138
SPRING 2019	64
FALL 2019	141
SPRING 2020	N/A*
FALL 2020	N/A*
SPRING 2021	N/A*
FALL 2021	123
SPRING 2022	75
FALL 2022	151
SPRING 2023	62

Suspension	
FALL 2018	17
SPRING 2019	36
FALL 2019	19
SPRING 2020	N/A*
FALL 2020	N/A*
SPRING 2021	N/A*
FALL 2021	N/A*
SPRING 2022	32
FALL 2022	11
SPRING 2023	23

\*Due to COVID-19, Probation and Suspension were not determined.  
Source: Kelly Downes, Director of Student Records/Registrar



# Tutoring Center

			Writing Center	Math Lab	Communications Center	General Tutoring	Tutoring Totals	CTE Totals
FY 2019	FALL 2018	NUMBER OF STUDENTS	49	174	72	9	203	189
		NUMBER OF HOURS	300	1987	53	73	2518	4471
	SPRING 2019	NUMBER OF STUDENTS	51	160	86	9	306	83
		NUMBER OF HOURS	560	1981	63	24	2628	1372
FY 2020	FALL 2019	NUMBER OF STUDENTS	73	189	68	18	348	154
		NUMBER OF HOURS	297	1162	59	126	1644	3839
	SPRING 2020*	NUMBER OF STUDENTS	18	132	19	8	177	73
		NUMBER OF HOURS	60	530	16	23	629	614
FY 2021	FALL 2020*	NUMBER OF STUDENTS	28	2	58	-	88	24
		NUMBER OF HOURS	77	17	66	-	160	21
	SPRING 2021*	NUMBER OF STUDENTS	21	2	47	-	70	15
		NUMBER OF HOURS	62	2	18	-	82	20
FY 2022	FALL 2021	NUMBER OF STUDENTS	17	113	0	3	133	44
		NUMBER OF HOURS	76	2037	0	6	2119	5960
	SPRING 2022	NUMBER OF STUDENTS	23	120	0	0	143	36
		NUMBER OF HOURS	170	1684	0	0	1854	638
FY 2023	FALL 2022	NUMBER OF STUDENTS	7	164	1	0	172	707
		NUMBER OF HOURS	24	3172	1	0	3197	34505**
	SPRING 2023	NUMBER OF STUDENTS	4	154	1	1	160	274
		NUMBER OF HOURS	28	2129	0	1	2158	5636

\*Due to COVID-19, tutoring went online with no tracking available. Data only shows from January 1<sup>st</sup> to March 6<sup>th</sup>, 2020.

\*\*Fall 2022, Athletic students started using CTE for study hall hours.

Source: RLC Custom Reports



## **Section III: Student Demographics**



## Student Demographics

	2019	2020	2021	2022	2023	5YR AVG	
<b>Gender</b>							
Male	2193	1739	1385	1498	1478	1659	
Female	2226	1914	1755	1861	1955	1942	
<b>Total</b>	<b>4419</b>	<b>3653</b>	<b>3140</b>	<b>3359</b>	<b>3433</b>	<b>3601</b>	
<b>Age</b>							
No Birthdate	0	0	0	0	0	0	
16 & Under	71	60	60	88	139	84	
17-20	2081	1976	1603	1695	1657	1802	
21-24	647	556	513	526	541	557	
25-30	432	306	295	306	320	332	
31-39	435	313	296	305	306	331	
40-55	512	308	265	330	359	355	
56-99	241	134	108	109	111	141	
Unknown	0	0	0	0	0	0	
<b>Ethnicity*</b>							
Asian	40	31	28	19	23	28	
American Indian or Alaska Native	19	21	36	14	13	21	
Black or African American	223	173	148	151	147	168	
Hispanic or Latino	58	52	64	79	77	66	
White	4045	3340	2913	3006	3080	3277	
Non-Resident Alien	4	3	1	1	0	2	
Native Hawaiian or Other Pacific Islander	5	5	6	27	5	10	
Unknown	25	28	0	62	19	27	
Two or More	-	-	-	-	69	69	

\*When reporting to ICCB, starting in 2021, student can choose multiple ethnicities. Students will be duplicated.

Source: ICCB A1

## Enrollment by Residency

	2019		2020		2021		2022		2023		5YR AVG	
In-District	3361	76.06%	3019	82.64%	2593	82.58%	2691	80.11%	2787	81.18%	2890	
Out of District	921	20.84%	577	15.80%	521	16.59%	651	19.38%	617	17.97%	657	
Out of State	122	2.76%	42	1.15%	17	0.54%	12	0.36%	19	0.55%	42	
Foreign Country	15	0.34%	15	0.41%	9	0.29%	5	0.15%	10	0.29%	11	

Source: ICCB A1



## Enrollment by State

	2019	2020	2021	2022	2023
Illinois	4284	3596	3115	3342	3404
Foreign	15	15	9	5	10
Missouri	35	11	7	6	6
Indiana	31	6	3	2	3
Tennessee	0	1	1	2	3
Kentucky	45	22	0	0	2
Michigan	0	0	0	0	1
Mississippi	0	0	0	0	1
Ohio	0	0	0	0	1
Texas	0	0	0	0	1
Wisconsin	0	0	0	0	1
New York	1	0	0	1	0
North Dakota	0	0	0	1	0
Arizona	0	0	2	0	0
Alabama	1	0	1	0	0
California	0	0	1	0	0
Minnesota	0	0	1	0	0
Arkansas	0	1	0	0	0
Maryland	0	1	0	0	0
Alaska	0	0	0	0	0
Colorado	0	0	0	0	0
Florida	0	0	0	0	0
Georgia	0	0	0	0	0
Hawaii	2	0	0	0	0
Iowa	1	0	0	0	0
Kansas	0	0	0	0	0
Massachusetts	0	0	0	0	0
Nebraska	0	0	0	0	0
New Hampshire	0	0	0	0	0
New Jersey	0	0	0	0	0
New Mexico	0	0	0	0	0
North Carolina	0	0	0	0	0
Pennsylvania	1	0	0	0	0



## Enrollment by County – Top 15 Counties

	2019	2020	2021	2022	2023
Jefferson*	1465	1252	1019	1188	1161
Franklin*	1218	1084	899	961	930
Perry*	363	360	349	336	393
Hamilton*	305	259	227	230	243
Williamson*	151	124	109	125	114
Marion	132	54	67	60	92
Wayne*	104	85	74	83	87
Randolph	57	53	41	53	46
Washington*	46	38	30	36	43
Jackson	65	46	54	58	42
White*	41	41	39	30	42
Saline	93	37	38	46	33
Correctional, Out of State	150	57	26	17	29
St. Clair	29	24	24	31	20
Effingham	7	5	4	51	18

Source: ICCB A1

\*Denotes counties within our district.

## Enrollment by Student Level at Initial Registration for FY

	2019	2020	2021	2022	2023	5YR AVG	
<b>Freshman</b>	1464	1068	837	1121	1090	1116	
<b>Sophomore</b>	974	877	790	730	781	830	
<b>Dual Enrollment</b>	170	167	181	119	216	171	
<b>Dual Credit*</b>	874	842	713	760	668	771	
<b>Unclassified</b>	937	699	619	629	678	712	

\*If a student was enrolled in both Dual Enrollment and Dual Credit, then the student was classified as Dual Credit.

Source: ICCB A1 Report

## Student by Generation

	2019		2020		2021		2022		2023	
Student in the first generation of their family to attend college	2449	55.42%	1820	49.82%	1381	43.98%	1535	45.70%	1794	52.26%
Student <b>not</b> in the first generation of their family to attend college	1970	44.58%	1833	50.18%	1759	56.02%	1824	54.30%	1639	47.74%

Source: ICCB A1 Report



## First-Time Freshman by Fiscal Year

	FY 2019		FY 2020		FY 2021		FY 2022		FY 2023	
	Graduated HS Spring	Graduated Prior 2018	Graduated HS Spring	Graduated Prior 2019	Graduated HS Spring	Graduated Prior 2020	Graduated HS Spring	Graduated Prior 2021	Graduated HS Spring	Graduated Prior 2022
<b>In-District Public High Schools</b>										
Benton	62	15	63	11	52	6	26	8	37	49
Christopher	16	7	16	8	15	7	13	4	23	24
Hamilton County	47	2	54	4	33	4	25	3	36	44
Mt. Vernon	108	32	85	19	68	23	78	1	86	115
Norris City-Omaha-Enfield	10	0	13	3	5	0	6	0	8	8
Pinckneyville	43	9	42	4	24	4	19	1	37	44
Sesser-Valier	37	5	27	8	13	2	14	0	17	23
Thompsonville	12	2	19	2	12	3	5	0	10	10
Waltonville	20	1	15	1	12	0	6	3	12	14
Wayne City	8	3	15	1	10	1	12	2	4	7
Webber Township	14	4	17	3	3	1	11	2	9	14
Woodlawn	18	5	13	0	9	0	15	2	22	26
Zeigler-Royalton	21	2	21	1	8	1	7	0	11	14
<b>In District Total</b>	<b>416</b>	<b>87</b>	<b>400</b>	<b>65</b>	<b>264</b>	<b>52</b>	<b>237</b>	<b>26</b>	<b>312</b>	<b>392</b>
<b>Unknown High School Total</b>	9	158	12	85	6	69	8	49	18	103
<b>Out of District &amp; Private High School Total</b>	123	65	92	55	86	55	82	47	92	176
<b>Home School Total</b>	10	2	2	2	2	5	5	1	5	7
<b>GED Completers Total</b>	11	19	5	15	5	11	0	15	3	22

Note: Graduated HS Spring 20XX – Student graduated high school in the spring semester of that year and then started as first-time freshman that within the fiscal year. This could have been the following Summer, Fall or Spring semester during that fiscal year.

Note: Graduated Prior 20XX – Student graduated high school in prior years, but started as a first-time freshman that fiscal year. This could have been in the Summer, Fall or Spring semester for that fiscal year.

Source: RLC Custom Reports

## Veteran Status

2019	2020	2021	2022	2023
148	115	99	73	77

Source: ICCB A1. Veteran Status is based on self-identification.

## Enrollment by Degree/Certificate Type

Degree/Certificate Type	2019	2020	2021	2022	2023	5YR AVG	
Associate in Arts (AA) (1.1)	581	580	481	495	520	531	
Associate in Science (AS) (1.1)	364	342	295	227	254	296	
Associate in Applied Science (AAS) (1.2)	640	584	489	520	603	567	
Basic Skills (1.7, 1.8, and 1.9)	207	172	124	165	116	157	
Vocational Skills (1.6)	1001	456	231	463	535	537	
Not applicable (Courses Enrollee Classification)	5	15	0	0	3	5	
Occupational Certificate of 30 Semester Hour or More (1.2)	79	95	102	113	133	104	
Occupational Certificate of 9 to Less Than 30 SemesterHours	263	140	162	156	151	174	
Occupational Certificate of Less 9 Semester Hours (1.2)	0	79	83	142	129	87	
Associate in Fine Arts (AFA) (1.1)	12	8	7	9	8	9	
Associate in Engineering Science (AES) (1.1)	17	18	20	11	19	17	
Associate of Arts in Teaching (AAT) (1.1)	0	0	0	0	0	0	

Note: These numbers do not include students who were enrolled in inactive or in curriculum codes for Dual Credit.





## Enrollment by GPA

	2019		2020		2021		2022		2023		5YR AVG	
	# of Students	Percentage of Students	# of Students	Percentage of Students	# of Students	Percentage of Students	# of Students	Percentage of Students	# of Students	Percentage of Students		
Blanks	870	19.69%	442	12.10%	297	9.46%	490	14.59%	522	15.61%	524	
0	111	2.51%	102	2.79%	91	2.90%	86	2.56%	85	2.54%	95	
.01 - 1.00	84	1.90%	84	2.30%	64	2.04%	85	2.53%	77	2.30%	79	
1.01 - 2.00	370	8.37%	295	8.08%	293	9.33%	278	8.28%	263	7.87%	300	
2.01 - 3.00	1205	27.27%	1028	28.14%	858	27.32%	850	25.31%	899	26.89%	968	
3.01 - 3.99	1323	29.94%	1215	33.26%	1128	35.92%	1138	33.88%	1136	33.98%	1188	
4.00	456	10.32%	487	13.33%	409	13.03%	432	12.86%	451	13.49%	447	

Note: Blanks represent students who were enrolled in classes with zero quality points or withdrew

Note: 0 GPA represents students who enrolled in courses with quality points but did not pass.

Source: ICCB A1 Report

## Enrollment by Highest Degree Previously Earned

	2019	2020	2021	2022	2023	5YR AVG	
Associate Degree	404	334	298	274	288	320	
Bachelor's Degree	194	111	111	108	155	136	
Certificate	168	107	149	153	156	147	
Doctoral Degree (Ph.D., Ed.D, D.A., etc.)	16	6	10	5	4	8	
GED	147	99	65	102	86	100	
High School Diploma	1712	1483	1338	1338	1296	1433	
Master's Degree	92	62	62	48	83	69	
None (Includes high school students who have not yet graduated/received a high school diploma.)	1298	1189	816	976	998	1055	
Other	10	5	6	0	1	4	
First Professional (Dental, Law, Medical, Pharmacy, Theology, Veterinary, etc.)	8	5	0	4	1	4	
Some (Persons who successfully passed at least one college level course at another college or university but did not graduate.)	342	232	259	318	351	300	
Unknown	28	20	26	33	14	24	

Source: ICCB A1



## Students attending on Chargeback/Contractual Agreements

	FISCAL YEAR 2019													
	Summer 2018						Fall 2018						Spring 2019	
	Number of Students	Number of Credit Hours	Amount	Chargeback (CH) or Cont. Agree. (CA)	Number of Students	Number of Credit Hours	Amount	Chargeback (CH) or Cont. Agree. (CA)	Number of Students	Number of Credit Hours	Amount	Chargeback (CH) or Cont. Agree. (CA)		
College of DuPage	1	5		CA	1	15		CA	1	13		CA		
Illinois Eastern Community Colleges	1	4.5		CA	5	79		CA	3	54		CA		
Illinois Eastern Community Colleges	267	350.5		IA*	642	1105		IA*	909	2507		IA*		
John A Logan College	2	5.5		CA	9	85		CA	4	42		CA		
Kaskaskia College	10	70		CA	18	254.5		CA	19	267		CA		
Lincoln Land Community College	1	3		CA										
Southeastern Illinois College					2	16		CA	1	16		CA		
Southwestern Illinois College					2	26		CA	2	23.5		CA		
<b>Total</b>	<b>282</b>	<b>438.5</b>	<b>\$0.00</b>	<b>TOTAL FY19</b>	<b>1900</b>	<b>4941.5</b>	<b>\$0.00</b>		<b>939</b>	<b>2922.5</b>	<b>\$0.00</b>			

	FISCAL YEAR 2020													
	Summer 2019						Fall 2019						Spring 2020	
	Number of Students	Number of Credit Hours	Amount	Chargeback (CH) or Cont. Agree. (CA)	Number of Students	Number of Credit Hours	Amount	Chargeback (CH) or Cont. Agree. (CA)	Number of Students	Number of Credit Hours	Amount	Chargeback (CH) or Cont. Agree. (CA)		
College of DuPage	1	17		CA										
Illinois Eastern Community Colleges	274	447.5		IA*	489	693.5		IA*	785	2065.5		IA*		
Illinois Eastern Community Colleges	1	6		CA	6	85		CA	6	91.5		CA		
John A Logan College	1	8		CA	13	134		CA	11	137		CA		
Kaskaskia College	6	38		CA	16	228.5		CA	16	217.5		CA		
Shawnee Community College					1	12		CA						
Southeastern Illinois College					3	40		CA	2	33		CA		
Southwestern Illinois College	1	6		CA	2	27		CA	3	23.5		CA		
<b>Total</b>	<b>284</b>	<b>512.5</b>	<b>\$0.00</b>	<b>TOTAL FY20</b>	<b>1637</b>	<b>4300.5</b>	<b>\$0.00</b>		<b>823</b>	<b>2568</b>	<b>\$0.00</b>			


	FISCAL YEAR 2021													
	Summer 2020						Fall 2020						Spring 2021	
	Number of Students	Number of Credit Hours	Amount	Chargeback (CH) or Cont. Agree. (CA)	Number of Students	Number of Credit Hours	Amount	Chargeback (CH) or Cont. Agree. (CA)	Number of Students	Number of Credit Hours	Amount	Chargeback (CH) or Cont. Agree. (CA)		
Illinois Eastern Community Colleges	145	100.5		IA*	317	287.5		IA*	614	1204		IA*		
Illinois Eastern Community Colleges	2	10.5		CA	7	58		CA	6	86		CA		
John A Logan College	16	78		CA	6	53		CA	8	47		CA		
Kaskaskia College	5	46		CA	10	135.5		CA	7	95.5		CA		
Southeastern Illinois College	1	8			3	24			3	49				
Southwestern Illinois College					3	24		CA	3	28		CA		
<b>Total</b>	<b>169</b>	<b>243</b>	<b>\$0.00</b>	<b>TOTAL FY21</b>	<b>343</b>	<b>558</b>	<b>\$0.00</b>		<b>641</b>	<b>1509.5</b>	<b>\$0.00</b>			

			Summer 2021			FISCAL YEAR 2022			Fall 2021			Spring 2022		
	Number of Students	Number of Credit Hours	Amount	Chargeback (CH) or Cont. Agree. (CA)	Number of Students	Number of Credit Hours	Amount	Chargeback (CH) or Cont. Agree. (CA)	Number of Students	Number of Credit Hours	Amount	Chargeback (CH) or Cont. Agree. (CA)		
Illinois Eastern Community Colleges	183	165.5		IA*	402	318		IA*	752	1882.5		IA*		
Illinois Eastern Community Colleges					2	31		CA	2	45		CA		
John A Logan College	2	15		CA	5	54		CA	5	66		CA		
Kaskaskia College	2	13		CA	3	37.5		CA	2	28.5		CA		
Southeastern Illinois College									1	23.5		CA		
Southwestern Illinois College	1	1		CA										
<b>Total</b>	<b>188</b>	<b>194.5</b>	<b>\$0.00</b>		<b>412</b>	<b>440.5</b>	<b>\$0.00</b>		<b>762</b>	<b>2045.5</b>	<b>\$0.00</b>			
				<b>TOTAL FY22</b>	<b>1362</b>	<b>2680.5</b>	<b>\$0.00</b>							

			Summer 2022			FISCAL YEAR 2023			Fall 2022			Spring 2023		
	Number of Students	Number of Credit Hours	Amount	Chargeback (CH) or Cont. Agree. (CA)	Number of Students	Number of Credit Hours	Amount	Chargeback (CH) or Cont. Agree. (CA)	Number of Students	Number of Credit Hours	Amount	Chargeback (CH) or Cont. Agree. (CA)		
Illinois Eastern Community Colleges	249	209.5		IA*	495	659.5		IA*	833	1458.5		IA*		
Illinois Eastern Community Colleges	1	7		CA	4	69		CA	4	81		CA		
John A Logan College	2	6		CA	6	51		CA	6	57		CA		
Kaskaskia College	1	10		CA	10	151		CA	8	137		CA		
Southeastern Illinois College	1	1.75		CA	1	19		CA						
Southwestern Illinois College					1	5		CA						
<b>Total</b>	<b>254</b>	<b>234.25</b>	<b>\$0.00</b>		<b>517</b>	<b>954.5</b>	<b>\$0.00</b>		<b>851</b>	<b>1733.5</b>	<b>\$0.00</b>			
				<b>TOTAL FY23</b>	<b>1622</b>	<b>2922.25</b>	<b>\$0.00</b>							

\*Attending per special inter-district arrangements between community college presidents.

### Contractual Agreement Totals

	FY 2019	FY 2020	FY 2021	FY 2022	FY 2023	5YR AVG	
Number of Students	1900	1637	1153	1362	1622	1534.8	
Number of Credit Hours	4941.5	4300.5	2310.5	2680.5	2922.25	3431.05	

Source: Kristina Shelton



## **Section IV: Finances & Financial Aid**



# Finances

## Revenue & Expenses

Revenue	FY 2019	FY 2020	FY 2021	FY 2022	FY 2023	5YR AVG	
Gross Tuition & Fee Revenue	\$ 8,667,760	\$ 7,889,321	\$ 6,647,255	\$ 6,941,830	\$ 7,497,371	\$ 7,528,707	
State Government Revenue	\$ 6,883,340	\$ 7,156,353	\$ 7,139,271	\$ 7,042,205	\$ 6,832,014	\$ 7,010,637	
Real Estate Tax Rate	0.6641	0.6363	0.6260	0.5938	0.5633	0.6167	
Total Operating Revenue (all sources)	\$ 22,118,796	\$ 21,183,431	\$ 21,687,132	\$ 22,046,523	\$ 23,264,502	\$ 22,060,077	
Expenses	FY 2019	FY 2020	FY 2021	FY 2022	FY 2023	5YR AVG	
Total Operating Salaries & Benefits	\$ 11,465,793	\$ 11,630,456	\$ 11,324,152	\$ 11,802,384	\$ 10,546,246	\$ 11,353,806	
Total Operating Expenses	\$ 19,862,091	\$ 18,612,537	\$ 17,455,501	\$ 19,121,419	\$ 16,815,847	\$ 18,373,479	

## Fiscal Year Breakdown

FY 2023 Breakdown	
<b>Operating Revenue by Source</b>	
Local Government	\$ 4,646,326
State Government	\$ 6,832,014
Tuition & Fees	\$ 7,024,471
Sales & Service	\$ 79,579
Facilities Revenue	\$ 18,860
Other	\$ 643,434
<b>TOTAL</b>	<b>\$ 19,244,684</b>
<b>Operating Expenses by Object</b>	
Salaries	\$ 9,085,881
Benefits	\$ 1,460,365
Contractual	\$ 1,124,392
Materials/Supplies	\$ 1,239,343
Travel	\$ 203,609
Fixed Charges	\$ 4,800
Utilities	\$ 851,291
Capital Outlay	\$ 188,825
Other	\$ 2,275,883
<b>TOTAL</b>	<b>\$ 16,434,389</b>
<b>Operating Expenses by Function</b>	
Instruction	\$ 5,574,527
Academic Support	\$ 605,868
Student Services	\$ 1,074,122
Public Services	\$ 61,138
Operation/Maintenance	\$ 2,755,166
Institutional Support	\$ 4,016,642
Scholarships/Grants	\$ 2,346,927
<b>TOTAL</b>	<b>\$ 16,434,390</b>

Source: Business Office



# Financial Aid

## Financial Aid by Award Type

	Award Year 2019	Number of Recipients	Award Year 2020	Number of Recipients	Award Year 2021	Number of Recipients	Award Year 2022	Number of Recipients	Award Year 2023	Number of Recipients
<b>FEDERAL PROGRAMS</b>										
PELL	\$3,175,703	791	\$3,165,066	830	\$2,576,102	652	\$2,667,470	653	\$2,688,239	651
SEOG	\$64,829	122	\$60,985	131	\$63,600	105	\$69,800	159	\$74,700	168
Federal Direct Loan Program	\$0	0	\$0	0	\$0	0	\$0	0	\$0	0
Post 9/11 GI Bill	\$99,445	34	\$68,343	25	\$75,196	25	\$37,804	14	\$35,192	12
Federal Work Study	\$54,808	28	\$55,605	33	\$39,703	16	\$28,183	17	\$37,847	17
CARES			\$591,132	560	\$591,132	505				
CARES2			\$188,200	252	\$103,923	249				
ARP							\$2,417,082	567	\$18,264	492
<b>Total Federal Programs</b>	<b>\$3,394,785</b>	<b>975</b>	<b>\$4,129,331</b>	<b>1831</b>	<b>\$3,449,656</b>	<b>1552</b>	<b>\$5,220,339</b>	<b>1,410</b>	<b>\$2,854,242</b>	<b>1340</b>
<b>STATE PROGRAMS</b>										
MAP	\$397,323	348	\$544,993	487	\$528,614	482	\$652,472	537	\$762,490	533
Senior Citizens Waivers	\$37,780	209	\$24,072	153	\$17,988	100	\$20,008	77	\$14,785	73
Dept. of Rehabilitation Grants (DORS)	\$107,729	30	\$59,548	16	\$48,753	13	\$62,867	18	\$99,906	23
National Guard Grants	\$26,180	12	\$14,921	9	\$13,285	8	\$12,815	6	\$4,185	2
Illinois Veterans Grants	\$54,582	22	\$34,781	17	\$27,074	10	\$14,451	9	\$17,353	8
Dependents of Veterans Scholarships	\$20,818	10	\$27,885	10	\$37,950	12	\$23,815	10	\$27,665	12
Illinois Veterans Grants (Tuition Waivers)	\$5,037	3	\$6,175	5	\$1,950	1	\$0	0	\$0	0
National Guard Grants (Tuition Waivers)	\$2,047	1	\$2,730	2	\$0	0	\$0	0	\$0	0
Workforce Incentive Act (WIA)	\$205,035	64	\$96,500	35	\$160,329	49	\$124,144	36	\$150,189	41
<b>Total State Programs</b>	<b>\$856,531</b>	<b>699</b>	<b>\$811,605</b>	<b>734</b>	<b>\$835,943</b>	<b>675</b>	<b>\$910,572</b>	<b>693</b>	<b>\$1,076,573</b>	<b>692</b>
<b>INSTITUTIONAL PROGRAMS</b>										
Staff Tuition Waiver	\$107,516	56	\$99,247	58	\$83,750	54	\$99,557	43	\$77,824	36
Talent Waivers (Academic/Athletic)	\$665,209	204	\$720,421	208	\$346,100	142	\$526,959	155	\$585,488	156
Student Employment	\$84,102	37	\$46,868	24	\$18,328	12	\$77,166	31	\$150,121	40
<b>Total Institutional Programs</b>	<b>\$856,827</b>	<b>297</b>	<b>\$866,536</b>	<b>290</b>	<b>\$448,178</b>	<b>208</b>	<b>\$626,516</b>	<b>229</b>	<b>\$813,433</b>	<b>232</b>

Source: RLC Financial Aid Office



## Financial Aid – IPEDS Report

<b>Total grant aid awarded to all undergraduate students</b>	\$8,364,963.00
<b>Number of undergraduate students who were awarded a Pell Grant</b>	529
<b>Percentage of Full-Time, First-Time students who were awarded any financial aid</b>	87%

	<b>Percentage of FTFT students who were awarded grant aid by type</b>	<b>Average amount of grant aid awarded by type</b>
<b>Total</b>	72%	\$6,171.00
<b>Federal Government</b>	42%	\$5,899.00
<b>Pell</b>	40%	\$3,085.00
<b>Other Federal</b>	38%	\$3,213.00
<b>State/Local Government</b>	34%	\$3,289.00
<b>Institutional</b>	38%	\$2,170.00

	<b>Percentage of FTFT students who were awarded and accepted loans by type</b>	<b>Average amount of loans awarded and accepted by type</b>
<b>Total</b>	3%	\$3,509.00
<b>Federal</b>	0%	NA
<b>Non-federal</b>	3%	\$3,509.00

<b>Average net price for FTFT students who were awarded</b>	\$9,909.00
<b>Average net price for FTFT students who were awarded Title IV federal student aid</b>	
\$0 - 30,000	\$7,570.00
\$30,001 - 48,000	\$9,244.00
\$48,001 - 75,000	\$9,232.00
\$75,001 - 110,000	\$10,887.00
\$110,001 and more	NA

<b>Military Service members and Veteran's Benefits</b>		
	<b>Number of students receiving benefits/assistance</b>	<b>of benefits/assistance awarded through the institution</b>
<b>Post-9/11 GI Benefits</b>		
Undergraduate students	20	\$49,174
<b>Department of Defense Tuition Assistance Program</b>		
Undergraduate students	0	NA

Source: IPEDS – Financial Aid FY 2023





## **Section V: Retention, Completion and Graduation Rates**



# Retention, Graduation Rates, and Completions

## Retention Rates

	Full-Time, First-Time	Part-Time, First-Time
Fall 2013	62%	52%
Fall 2014	66%	51%
Fall 2015*	70%	50%
Fall 2016	59%	46%
Fall 2017	65%	50%
Fall 2018	69%	48%
Fall 2019	63%	38%
Fall 2020	66%	45%
Fall 2021	65%	41%

\* 2015(FY16) rates included students who graduated in the summer; 2016 and forward do not count these students.

Source: IPEDS Fall Enrollment Reports

## Fall to Fall Adjusted Retention Rates

Rend Lake College	Fall 2017	Fall 2018	Fall 2019	Fall 2020	Fall 2021
<b>First-Time, Full-Time Entering Cohort</b>	505	470	444	328	344
Returned	283	291	244	199	204
Completed Year 1	47	34	34	17	21
Not Returned, Not Completed	175	145	166	112	119
Returned or Completed	330	325	278	216	225
<b>Adjusted Retention</b>	65.3%	69.1%	62.6%	65.9%	65.4%

State of Illinois	Fall 2017	Fall 2018	Fall 2019	Fall 2020	Fall 2021
<b>First-Time, Full-Time Entering Cohort</b>	27,692	26,803	27,477	23,274	23,473
Returned	17,902	17,261	17,106	14,826	15,056
Completed Year 1	523	534	572	480	580
Not Returned, Not Completed	9,267	9,008	9,799	7,968	7,837
Returned or Completed	18,425	17,795	17,678	15,306	15,636
<b>Adjusted Retention</b>	66.5%	66.4%	64.3%	65.8%	66.6%

Source: ICCB Centralized Data Systems - <https://www2.iccb.org/data/studies-reports/recently-added-reports/>



## Graduation Rates

<b>Graduation Rates from IPEDS Graduations Rates and GR200 Survey Full-Time, First-Time Degree/Certificate Seeking</b>			
<b>Cohort Year</b>	<b>100% Graduation Rates</b>	<b>150% Graduation Rates</b>	<b>200% Graduation Rates</b>
<b>Fall 2013</b>	38%	51%	52%
<b>Fall 2014</b>	41%	58%	60%
<b>Fall 2015</b>	46%	61%	63%
<b>Fall 2016</b>	37%	53%	54%
<b>Fall 2017</b>	41%	56%	58%
<b>Fall 2018</b>	45%	59%	61%
<b>Fall 2019</b>	43%	56%	

Source: IPEDS Graduation Rates Reports



# Completions

## Completions by Gender & Ethnicity

	2019		2020		2021*		2022		2023	
	Male	Female	Male	Female	Male	Female	Male	Female	Male	Female
	53%	47%	54%	46%	51%	49%	47%	53%	53%	47%
<b>Asian</b>	0.37%		0.90%		0.50%		0.70%		0.33%	
<b>American Indian or Alaska Native</b>	0.37%		0.00%		0.40%		0.80%		0.13%	
<b>Black or African American</b>	3.20%		4.25%		4.30%		4.90%		3.82%	
<b>Hispanic or Latino</b>	0.46%		1.23%		1.80%		1.90%		2.17%	
<b>White</b>	95.53%		93.38%		94.20%		93.25%		91.44%	
<b>Nonresident Alien</b>	0.00%		0.08%		0.00%		0.00%		0.00%	
<b>Islander</b>	0.00%		0.00%		0.10%		0.50%		0.07%	
<b>Two or More</b>	0.00%		0.00%		0.00%		0.00%		2.04%	
<b>Unknown</b>	0.09%		0.16%		0.00%		0.00%		0.00%	

\*For the 2021 A2 Report, prime ethnicity is no longer used. Students are duplicated.

## Completions by Term

	FY2019	FY2020	FY2021	FY2022	FY2023
Summer	178	222	171	199	143
Fall	202	239	273	223	195
Spring	801	762	697	823	1181
<b>Total</b>	<b>1181</b>	<b>1223</b>	<b>1141</b>	<b>1245</b>	<b>1519</b>

## Students Completed a Certificate or Degree

FY2019	FY2020	FY2021	FY2022	FY2023
687	629	595	697	833

Note: Spring 2023 – Auto-Award to complete students that did not apply for graduation but met the graduation requirements for degrees or certificates.

## Completions by Degree/Certificate Type

Degree/Certificate Type	2019	2020	2021	2022	2023
Associate in Arts (AA) (1.1)	157	199	181	161	151
Associate in Science (AS) (1.1)	124	144	140	116	145
Associate in Applied Science (AAS) (1.2)	234	194	152	179	180
Occupational Certificate of 30 Semester Hours or More (1.2)	102	94	119	147	174
Occupational Certificate of 9 to Less than 30 Semester Hours	403	246	221	256	447
Occupational Certificate of Less 9 Semester Hours (1.2)	0	139	139	231	258
Associate in Fine Arts (AFA) (1.1)	0	5	2	3	4
Associate in Engineering Science (AES) (1.1)	5	10	7	3	7
Associate of Arts in Teaching (AAT) (1.1)	0	0	0	0	0
General Education Core Curriculum Credential (GECC)**	156	192	180	149	153

\*\*GECC began Spring 2019.

Source: ICCB A2 Completions Report



## Completion Detail by Degree/Certificate Type

PREFIX	NUMBER	CURRICULUM TITLE	PCS	CIP	ID	CURR HOURS	BEG DATE	STATUS	2019	2020	2021	2022	2023
AA	100	ASSOCIATE IN ARTS	12	240101	1	64	8231982	A	157	199	181	161	151
ACP	105	COMPUTER PROGRAMMING	12	110201	3	64	1012007	A	1	8	2	1	0
ADN	3	ASSOCIATE DEGREE NURSING	12	513801	3	64	8012014	A	44	39	25	43	28
AFA	800	ASSOCIATE IN FINE ARTS	11	500702	50	64	8212001	A	0	1	2	2	1
AFA	801	AFA MUSIC PERFORMANCE-INSTRU. OPTION	11	500901	50	64	9282010	A	0	0	0	1	2
AFA	802	AFA MUSIC PERFORMANCE-VOCAL OPTION	11	500901	50	64	9282010	A	0	4	0	0	1
AGRI	4	AGRICULTURAL BUSINESS	12	10101	3	68	8012009	A	12	14	18	10	19
AGRI	5	AGRICULTURAL MECHANICS	12	10201	20	27	8202002	A	24	10	9	14	24
AGRI	6	AGRICULTURAL MECHANICS	12	10201	3	72	8012009	A	18	11	6	7	12
AGRI	7	AGRICULTURAL PRODUCTION & MANAGEMENT	12	10301	20	30	5151992	A	7	6	7	6	7
AGRI	8	AGRICULTURAL PRODUCTION & MANAGEMENT	12	10301	3	71	8012009	A	7	4	7	6	6
ARCH	9	COMPUTER AIDED DRAFTING	12	151302	30	11	8011998	A	0	0	0	0	0
AS	200	ASSOCIATE IN SCIENCE	11	300101	2	64	4302010	A	124	144	140	116	145
AUTO	12	AUTOMOTIVE TECHNOLOGY	12	470604	20	50	8011998	A	9	5	14	5	8
AUTO	13	AUTOMOTIVE TECHNOLOGY	12	470604	3	69	8152000	A	6	3	6	3	5
AUTO	89	AUTOMOTIVE ENGINE REPAIR	12	470604	30	7	6202000	A	7	12	7	8	24
AUTO	90	AUTOMOTIVE BRAKE	12	470604	30	6	6202000	A	8	13	8	5	13
AUTO	91	AUTOMOTIVE TRANSMISSION	12	470604	30	10	6202000	A	6	3	17	6	7
AUTO	92	AUTOMOTIVE AIR CONDITIONING	12	470604	30	5	6202000	A	7	12	7	8	17
AUTO	93	AUTOMOTIVE ELECTRICAL	12	470604	30	6	6202000	A	16	5	14	7	7
AUTO	94	AUTOMOTIVE SUSPENSION AND STEERING	12	470604	30	6	6202000	A	10	8	12	9	9
AUTO	197	FORD MLR CERTIFICATE	12	470604	30	18	7262011	A	0	0	0	0	0
BME	1	BIOMEDICAL ELECTRONICS	12	150401	3	64	3012016	A	2	1	0	0	0
BUSI	1	BUSINESS MANAGEMENT	12	520101	30	16	2022017	A	0	1	4	10	4
BUSI	2	BUSINESS MANAGEMENT II	12	520101	20	31	2012017	A	0	1	3	10	3
BUSI	3	ENTREPRENEURSHIP	12	520101	30	13	1052018	A	17	5	8	17	9
BUSI	4	HUMAN RESOURCE ASSOCIATE	12	520101	30	19	4192019	A	0	0	1	3	0
BUSI	5	FINANCIAL ASSOCIATE	12	520101	30	18	4192019	A	0	0	2	2	0
BUSI	17	BUSINESS	12	520101	3	64	1032017	A	0	2	2	11	5
CMA	1	CERTIFIED MEDICAL ASSISTANT	12	510801	3	66	12022014	A	6	2	7	3	4
CMA	2	CERTIFIED MEDICAL ASSISTANT	12	510801	20	36	11212014	A	11	7	16	5	8
CNS	1	WINDOWS	12	151201	30	11	3042014	A	0	8	8	8	8
CNS	2	LINUX NETWORKING	12	151202	30	12	1092014	A	8	7	7	8	7
CNS	3	CYBER SECURITY SPECIALIST	12	111003	30	19	6152015	A	6	8	8	8	7
CNS	4	IT DATABASE SPECIALIST	12	111003	3	64	01/01/2020	A	0	0	0	1	0
CNS	5	IT SECURITY SPECIALIST	12	111003	3	67	5172018	A	8	3	9	1	5
CNS	79	IT SYSTEMS SPECIALIST	12	151202	3	67	8012012	A	9	2	1	9	0
CNS	80	COMPUTER NETWORKING CERTIFICATE	12	110901	30	14	7012015	A	8	8	6	10	14
CNS	82	PC MAINTENANCE	12	151203	30	8	1012014	A	9	9	9	8	0
CNS	83	PC MAINTENANCE CERTIFICATE	12	151201	30	15	7012012	I	8	0	0	0	0
COSM	1	NAIL TECHNOLOGY	12	120410	30	16	4302013	A	0	0	0	1	1
COSM	2	BARBER	12	120402	20	50	9192014	A	1	1	6	2	8
COSM	3	BARBER	12	120402	3	65	2032015	A	0	0	0	0	0

PREFIX	NUMBER	CURRICULUM TITLE	PCS	CIP	ID	CURR HOURS	BEG DATE	STATUS	2019	2020	2021	2022	2023
COSM	4	COSMETOLOGY	12	120401	3	65	2032015	A	3	1	0	2	3
COSM	5	ESTHETICS	12	120409	20	30.5	6052015	A	1	7	0	14	15
COSM	6	COSMETOLOGY TEACHER 500 HR TRAINING	12	120413	30	19	11052015	A	0	0	0	0	0
COSM	7	BARBER TEACHER 1000 HR TRAINING	12	120413	20	37	11202015	A	0	0	0	0	0
COSM	8	BARBER TEACHER 500 HR TRAINING	12	120413	30	19	11052015	A	0	0	0	0	1
COSM	122	COSMETOLOGY	12	120401	20	50	9012011	A	0	6	8	6	13
COSM	130	COSMETOLOGY TEACHER 1000 HR TRAINING	12	120413	20	37	11202015	A	0	0	0	0	0
CRJS	1	CYBER FORENSICS SPECIALIST	12	430107	20	24	3212014	A	0	0	0	0	0
CRJS	39	CRIMINAL JUSTICE	12	430107	3	64	6011992	A	13	9	7	11	5
CRJS	98	POLICE SCIENCE	12	430107	30	12	11202000	A	0	0	0	0	0
CRJS	99	CORRECTIONS	12	430102	30	12	11202000	A	0	0	0	6	10
CRJS	110	PRIVATE PROTECTION	12	430107	30	12	7012007	A	1	0	0	3	4
CSCI	62	IT SYSTEMS ASSISTANT	12	520401	3	65	1012007	A	0	0	0	0	0
CSCI	119	PROGRAMMING WITH VISUAL BASIC	12	110202	30	9	3212003	A	1	1	0	0	4
CSCI	128	MICROSOFT USER CERTIFICATE	12	520401	30	15	10162003	A	1	0	1	0	0
CULA	64	CULINARY ARTS MANAGEMENT	12	120503	3	70.0 R	7012010	A	8	4	8	10	5
CULA	189	CULINARY ARTS CERTIFICATE	12	120503	30	27	7012013	A	6	4	8	12	8
CULA	190	BAKING & PASTRY ARTS CERTIFICATE	12	120501	30	28	7012013	A	0	1	0	1	5
DIEL	107	DIESEL TECHNOLOGY	12	10205	3	66	1012004	A	23	15	7	9	13
DIEL	113	DIESEL TECHNOLOGY	12	470605	20	30	6012011	A	23	14	11	18	21
ECE	1	TECHNICAL ASSISTANCE CREDENTIAL	12	190709	30	16	6012017	A	0	0	0	1	0
ECE	2	EARLY CHILDHOOD EDUCATION	12	190709	20	30	12192017	A	3	1	1	5	12
ECE	70	EARLY CHILDHOOD EDUCATION	12	190709	3	67	10012010	A	7	1	2	5	3
ECE	138	EARLY CHILDHOOD ASSISTANT	12	190709	30	6	6222004	A	3	4	1	4	27
ECE	590	EARLY CHILDHOOD CERTIFICATE-LEVEL 2	12	190709	30	12	4092010	A	5	3	2	5	20
ECE	595	EARLY CHILDHOOD CERTIFICATE-LEVEL 3	12	190709	30	27	4192010	A	5	1	2	5	4
EMT	1	EMERGENCY MEDICAL TECHNICIAN BASIC	12	510904	30	9	11032014	A	11	10	5	1	20
EMTP	120	EMT PARAMEDIC	12	510904	3	68	8012015	A	1	0	3	1	7
EMTP	121	EMT PARAMEDIC CERTIFICATE	12	510904	20	45	8012012	A	3	3	4	0	7
ENGR	77	ASSOCIATE ENGINEERING SCIENCE	11	140101	51	68	8012014	A	5	10	7	3	7
GECC	1	GEN ED CORE CURRICULUM CREDENTIAL	11	240101	53	37	2222019	A	-	-	180	149	153
GFM	1	GREEN FACILITIES MANAGEMENT	12	150503	30	16	7132012	A	0	0	0	0	0
GRD	1	GRAPHIC WEB DESIGN CERTIFICATE	12	500409	30	18	5022012	A	0	4	1	0	2
GRD	2	GRAPHIC TECHNICIAN	12	500409	20	37	7012019	A	0	4	0	0	4
GRD	3	MOTION DESIGN	12	500409	20	30	4192019	A	-	-	1	0	8
GRD	84	GRAPHIC DESIGN	12	500409	3	67	7012007	A	4	6	1	2	3
GRD	85	GRAPHIC DESIGN CERTIFICATE	12	500409	20	31	12012010	A	5	2	1	1	4
HEQT	86	HEAVY EQUIPMENT TECHNOLOGY	12	470302	30	29	2222019	A	-	10	6	12	20
HEQT	87	HEAVY EQUIPMENT TECHNOLOGY	12	470302	3	72	12012010	A	13	12	3	6	13
IST	1	ROBOTS AND AUTOMATION CERTIFICATE	12	470303	30	18	7062016	A	15	21	16	10	17
IST	2	INDUSTRIAL MAINTENANCE MULTI TECH	12	470303	30	20	9172018	A	1	15	16	11	16



PREFIX	NUMBER	CURRICULUM TITLE	PCS	CIP	ID	CURR HOURS	BEG DATE	STATUS	2019	2020	2021	2022	2023
IST	35	IND ELECTRONICS & MAINTENANCE TECH	12	470303	3	72	8012005	A	14	19	16	9	18
IST	37	INDUSTRIAL MAINTENANCE TECHNICIAN	12	470303	30	28	7012003	A	14	19	16	11	20
IST	137	PROGRAMMABLE LOGIC CONTROLLER	12	470105	30	22	11172004	A	15	22	15	11	18
LPN	40	PRACTICAL NURSING	12	513901	20	39	12012015	A	15	28	36	56	31
MACH	136	BASIC MACHINING CERTIFICATE	12	480501	30	18	8012012	A	5	1	0	3	1
MEDC	1	MEDICAL CODING CERTIFICATE	12	510713	30	29	7012014	A	5	8	7	15	16
MFG	1	MANUFACTURING TECHNOLOGY	12	150613	3	64	10152012	A	1	1	0	2	0
MFG	2	MANUFACTURING TECHNOLOGY	12	150405	20	32	11272012	A	0	0	0	1	0
MFG	3	CERTIFIED PRODUCTION TECHNICIAN	12	150613	30	16	6032015	A	3	1	0	2	6
MSS	1	MEDICAL SUPPORT SPECIALIST	12	510710	30	16	6302019	A	0	1	2	4	0
NURA	45	BASIC NURSING ASSISTANT TRAINING	12	513902	30	7	8012012	A	112	71	49	128	116
OFTC	1	OFFICE TECHNOLOGIES ASSISTANT	12	520401	20	30	6032016	A	0	0	1	0	1
PCA	1	PERSONAL CARE AIDE	12	512602	30	16	11032014	A	0	0	0	0	17
PHAR	1	PHARMACY TECHNICIAN	12	510805	30	16	2252015	A	4	0	0	0	3
PHLE	1	PHLEBOTOMY	12	511009	30	16	5022012	A	3	4	12	9	15
RAD	147	RADIOLOGIC TECHNOLOGY	12	510907	3	69.5	8012015	A	22	22	18	18	22
RAD	159	COMPUTED TOMOGRAPHY	12	510907	30	16	1012010	A	2	0	0	1	0
RAD	160	MRI CERTIFICATE	12	510907	30	16	1272012	A	1	0	0	0	0
TRUK	1	TRUCK DRIVER TRAINING	12	490205	30	7	5022012	A	18	5	32	54	28
TRUK	2	HEAVY EQUIPMENT TRANSPORTATION	12	470605	30	26	5022012	A	0	0	1	1	0
UAS	1	UNMANNED AIRCRAFT SYSTEMS	12	150303	30	9	9302015	A	6	1	0	1	2
VET	1	VETERINARY ASSISTANT	12	510808	30	17	3212017	A	2	10	8	5	9
WELD	56	WELDING TECHNOLOGY	12	480508	30	24	7012003	A	10	14	10	11	32
WELD	57	PIPE WELDING TECHNOLOGY	12	480508	30	12	7012003	A	15	11	4	9	16
WELD	117	WELDING FUNDAMENTALS	12	480508	30	12	1072003	A	8	13	15	13	49
WELD	118	ADVANCED WELDING TECHNIQUES	12	480508	30	12	1072003	A	9	14	7	11	32
WELD	135	ADVANCED METAL WORKING CERTIFICATE	12	480508	30	19	11172004	A	11	16	5	11	23
WELD	158	WELDING TECHNOLOGY	12	480508	3	65	9192008	A	7	14	1	9	8





# Student Outcome Measures

	2019				2020				2021				2022			
	4-Year Award Rate	6-Year Award Rate	8-Year Award Rate	Still Enrolled at Your Instruction after 8 Years	Did Not Receive an Award and Subsequently Enrolled at Another Institution	4-Year Award Rate	6-Year Award Rate	8-Year Award Rate	Still Enrolled at Your Instruction after 8 Years	Did Not Receive an Award and Subsequently Enrolled at Another Institution	4-Year Award Rate	6-Year Award Rate	8-Year Award Rate	Still Enrolled at Your Instruction after 8 Years	Did Not Receive an Award and Subsequently Enrolled at Another Institution	
<b>First-Time Entering</b>																
Full Time	54%	57%	58%	1%		55%	57%	58%	0%		55%	56%	56%	0%		
Pell Grant Recipients	48%	51%	52%	1%		49%	50%	51%	1%		42%	43%	44%	22%	60%	
Non-Pell Grant Recipient	61%	64%	66%	0%		53%	65%	66%	0%		68%	69%	70%	18%	51%	
Pell-Time	37%	42%	42%	0%		45%	47%	47%	0%		34%	37%	37%	20%	46%	
Non-Pell Grant Recipient	37%	44%	44%	0%		35%	36%	36%	1%		23%	26%	26%	17%	29%	
<b>Non-First-Time Entering</b>																
Full Time	37%	40%	43%	0%		41%	41%	41%	0%		40%	43%	43%	22%	57%	
Pell Grant Recipients	33%	37%	38%	0%		39%	39%	39%	0%		53%	53%	53%	25%	54%	
Non-Pell Grant Recipient	45%	48%	52%	0%		45%	4%	45%	0%		68%	68%	68%	25%	52%	
Part-Time	14%	17%	17%	0%		34%	34%	34%	0%		40%	40%	40%	2%	37%	
Pell Grant Recipients	19%	29%	29%	0%		38%	38%	38%	0%		42%	42%	42%	26%	24%	
Non-Pell Grant Recipient	10%	13%	13%	0%		33%	33%	33%	0%		39%	39%	39%	30%	24%	
<b>Total Entering</b>	47%	51%	52%	1%		52%	53%	54%	0%		51%	52%	52%	23%	44%	
Pell Grant Recipients	45%	49%	49%	1%		46%	47%	48%	1%		41%	42%	42%	25%	55%	
Non-Pell Grant Recipient	50%	50%	54%	0%		57%	58%	59%	0%		59%	60%	61%	21%	47%	

## Transfer Rates

Rend Lake College	FY 18	FY 19	FY 20	FY 21
<b>Associate Transfer Degree Completers</b>	174	179	222	198
Transferred - Illinois Colleges	76	72	96	80
Transferred - Out-of-State	49	51	46	37
Transferred - Both Illinois and Out-Of-State	0	1	3	3
<b>Total Number of Transfers</b>	125	124	145	120

State of Illinois	FY 18	FY 19	FY 20	FY 21
<b>Associate Transfer Degree Completers</b>	20,649	20,021	19,136	19,009
Transferred - Illinois Colleges	9,671	9,448	8,993	8,968
Transferred - Out-of-State	2,455	2,314	2,289	2,407
Transferred - Both Illinois and Out-Of-State	143	124	105	157
<b>Total Number of Transfers</b>	12,269	11,886	11,387	11,532
<b>Rate - Total Transferred</b>	59.4%	59.4%	59.5%	60.7%

Source: ICCB Centralized Data System - <https://www2.iccb.org/data/studies-reports/recently-added-reports/>



## **Section VI - Student Consumer Information**



# Security Report

CRIMINAL OFFENSE REPORTING TABLE					
OFFENSE	YEAR	GEOGRAPHIC LOCATION			
		ON-CAMPUS PROPERTY	ON-CAMPUS STUDENT HOUSING FACILITIES	NONCAMPUS PROPERTY	PUBLIC PROPERTY
MURDER/NON-NEGLIGENT MANSLAUGHTER	2022	0	0	0	0
	2021	0	0	0	0
	2020	0	0	0	0
MANSLAUGHTER BY NEGLIGENCE	2022	0	0	0	0
	2021	0	0	0	0
	2020	0	0	0	0
RAPE	2022	0	0	0	0
	2021	0	0	0	0
	2020	0	0	0	0
FONDLING	2022	0	0	0	0
	2021	0	0	0	0
	2020	0	0	0	0
INCEST	2022	0	0	0	0
	2021	0	0	0	0
	2020	0	0	0	0
STATUTORY RAPE	2022	0	0	0	0
	2021	0	0	0	0
	2020	0	0	0	0
ROBBERY	2022	0	0	0	0
	2021	0	0	0	0
	2020	0	0	0	0
AGGRAVATED ASSAULT	2022	0	0	0	0
	2021	0	0	0	0
	2020	0	0	0	0
BURGLARY	2022	0	0	0	0
	2021	0	0	0	0
	2020	0	0	0	0
MOTOR VEHICLE THEFT	2022	0	0	0	0
	2021	0	0	0	0
	2020	0	0	0	0
ARSON	2022	0	0	0	0
	2021	0	0	0	0
	2020	0	0	0	0



VAWA OFFENSE REPORTING TABLE					
OFFENSE	YEAR	GEOGRAPHIC LOCATION			
		ON-CAMPUS PROPERTY	ON-CAMPUS STUDENT HOUSING FACILITIES	NONCAMPUS PROPERTY	PUBLIC PROPERTY
DOMESTIC VIOLENCE	2022	0	0	0	0
	2021	0	0	0	0
	2020	0	0	0	0
DATING VIOLENCE	2022	0	0	0	0
	2021	0	0	0	0
	2020	0	0	0	0
STALKING	2022	0	0	0	0
	2021	0	0	0	0
	2020	0	0	0	0

ARRESTS AND DISCIPLINARY REFERRALS REPORTING TABLE					
OFFENSE	YEAR	GEOGRAPHIC LOCATION			
		ON-CAMPUS PROPERTY	ON-CAMPUS STUDENT HOUSING FACILITIES	NONCAMPUS PROPERTY	PUBLIC PROPERTY
ARRESTS: WEAPONS: CARRYING, POSSESSING, ETC.	2022	0	0	0	0
	2021	0	0	0	0
	2020	0	0	0	0
DISCIPLINARY REFERRALS: WEAPONS: CARRYING, POSSESSING, ETC.	2022	0	0	0	0
	2021	0	0	0	0
	2020	0	0	0	0
ARRESTS: DRUG ABUSE VIOLATIONS	2022	0	0	0	0
	2021	0	0	0	0
	2020	0	0	0	0
DISCIPLINARY REFERRALS: DRUG ABUSE VIOLATIONS	2022	0	0	0	0
	2021	0	0	0	0
	2020	0	0	0	0
ARRESTS: LIQUOR LAW VIOLATIONS	2022	0	0	0	0
	2021	0	0	0	0
	2020	0	0	0	0
DISCIPLINARY REFERRALS: LIQUOR LAW VIOLATIONS	2022	0	0	0	0
	2021	0	0	0	0
	2020	0	0	0	0



## Student Right to Know

### Enrolled Student Diversity, Completion, and Transfer-Out Rates for All Students and Scholarship Athletes

	Fall 2022 Cohort Enrollment			Fall 2019 Cohort Completion Rate			Fall 2017-2019 Cohorts Average Completion Rate			Fall 2019 Cohort Transfer-Out Rate			Fall 2017-2019 Cohorts Average Transfer-Out Rate			
	Female	Male	Total	Female	Male	Total	Female	Male	Total	Female	Male	Total	Female	Male	Total	
All Students	<b>Total</b>	534	430	964	58%	52%	57%	59%	55%	57%	9%	14%	11%	11%	14%	12%
	Asian	6	6	12	-	-	-	-	-	-	-	-	-	-	-	-
	American Indian or Alaska Native	-	-	-	-	-	-	-	-	-	-	-	-	-	-	-
	Black or African American	38	22	60	-	-	-	50%	38%	42%	-	-	-	-	40%	32%
	Hispanic or Latino	11	13	24	-	-	-	-	-	-	-	-	-	-	-	-
	White	477	384	861	62%	58%	56%	62%	58%	60%	9%	14%	11%	10%	12%	11%
	Nonresident Alien	-	-	-	-	-	-	-	-	-	-	-	-	-	-	-
	Native Hawaiian or Other Pacific Islander	-	-	-	-	-	-	-	-	-	-	-	-	-	-	-
	Two or more races	-	-	-	-	-	-	-	-	-	-	-	-	-	-	-
	Unknown	-	-	-	-	-	-	-	-	-	-	-	-	-	-	-
	Recipients of a Federal Pell Grant	52%	51%	52%	52%	51%	52%	52%	48%	50%	7%	14%	10%	10%	14%	12%
	Recipients of a subsidized Stafford Loan (who did not receive a Pell Grant)	-	-	-	-	-	-	-	-	-	-	-	-	-	-	-
Students who did Not receive either a Pell Grant OR a subsidized Stafford Loan	59%	53%	60%	69%	53%	60%	69%	60%	54%	13%	19%	17%	12%	15%	14%	
Basketball	<b>Total</b>	8	12	20	-	-	-	-	-	-	-	-	-	-	88%	71%
	Asian	-	-	-	-	-	-	-	-	-	-	-	-	-	-	-
	American Indian or Alaska Native	-	-	-	-	-	-	-	-	-	-	-	-	-	-	-
	Black or African American	-	-	7	-	-	-	-	-	-	-	-	-	-	88%	95%
	Hispanic or Latino	-	-	-	-	-	-	-	-	-	-	-	-	-	-	-
	White	-	9	12	-	-	-	-	-	-	-	-	-	-	-	-
	Nonresident Alien	-	-	-	-	-	-	-	-	-	-	-	-	-	-	-
	Two or more races	-	-	-	-	-	-	-	-	-	-	-	-	-	-	-
	Native Hawaiian or Other Pacific Islander	-	-	-	-	-	-	-	-	-	-	-	-	-	-	-
Unknown	-	-	-	-	-	-	-	-	-	-	-	-	-	-	-	
Baseball	<b>Total</b>	-	16	16	-	-	-	-	100%	100%	-	-	-	-	-	-
	Asian	-	-	-	-	-	-	-	-	-	-	-	-	-	-	-
	American Indian or Alaska Native	-	-	-	-	-	-	-	-	-	-	-	-	-	-	-
	Black or African American	-	-	-	-	-	-	-	-	-	-	-	-	-	-	-
	Hispanic or Latino	-	-	-	-	-	-	-	-	-	-	-	-	-	-	-
	White	-	12	12	-	-	-	-	100%	100%	-	-	-	-	-	-
	Nonresident Alien	-	-	-	-	-	-	-	-	-	-	-	-	-	-	-
	Native Hawaiian or Other Pacific Islander	-	-	-	-	-	-	-	-	-	-	-	-	-	-	-
	Two or more races	-	-	-	-	-	-	-	-	-	-	-	-	-	-	-
Unknown	-	-	-	-	-	-	-	-	-	-	-	-	-	-	-	
Cross Country and Track	<b>Total</b>	-	-	-	-	-	-	-	-	-	-	-	-	-	-	-
	Asian	-	-	-	-	-	-	-	-	-	-	-	-	-	-	-
	American Indian or Alaska Native	-	-	-	-	-	-	-	-	-	-	-	-	-	-	-
	Black or African American	-	-	-	-	-	-	-	-	-	-	-	-	-	-	-
	Hispanic or Latino	-	-	-	-	-	-	-	-	-	-	-	-	-	-	-
	White	-	-	-	-	-	-	-	-	-	-	-	-	-	-	-
	Nonresident Alien	-	-	-	-	-	-	-	-	-	-	-	-	-	-	-
	Native Hawaiian or Other Pacific Islander	-	-	-	-	-	-	-	-	-	-	-	-	-	-	-
	Two or more races	-	-	-	-	-	-	-	-	-	-	-	-	-	-	-
Unknown	-	-	-	-	-	-	-	-	-	-	-	-	-	-	-	
Other Sports	<b>Total</b>	31	7	38	77%	-	78%	74%	-	71%	-	-	-	100%	-	100%
	Asian	-	-	-	-	-	-	-	-	-	-	-	-	-	-	-
	American Indian or Alaska Native	-	-	-	-	-	-	-	-	-	-	-	-	-	-	-
	Black or African American	-	-	-	-	-	-	-	-	-	-	-	-	-	-	-
	Hispanic or Latino	-	-	-	-	-	-	-	-	-	-	-	-	-	-	-
	White	29	6	35	77%	-	78%	71%	-	71%	-	-	-	100%	-	100%
	Nonresident Alien	-	-	-	-	-	-	-	-	-	-	-	-	-	-	-
	Native Hawaiian or Other Pacific Islander	-	-	-	-	-	-	-	-	-	-	-	-	-	-	-
	Two or more races	-	-	-	-	-	-	-	-	-	-	-	-	-	-	-
Unknown	-	-	-	-	-	-	-	-	-	-	-	-	-	-	-	

**NOTES:**

- (1) Source: ICCB Fall 2018 Enrollment by Sport Report for full-time degree-seeking students
- (2) Source: ICCB First-time, Full-time, Degree/Certificate Seeking Fall Cohort Completion/Transfer Reports for the specified cohorts within 150% of normal time/3 years
- (3) Athletic student group inclusion based on student receipt of athletically related student aid for the specified sport.
- (4) Rates not provided when five or fewer students are included in the calculation.



## **Section VII - Facts and Figures**



# ICCB Facts and Figures

## Summary Profile of the Illinois Public Community Colleges



Illinois Community College Board

Table 1

A SUMMARY PROFILE OF THE ILLINOIS PUBLIC COMMUNITY COLLEGES

Dist. No.	District	District Location	District Size			2021 Tax Base EAV	2021 Tax Rates Extended			Student Enrollment		FY 23 Annual Tuition & Fee Charges	
			# of Coll.	2021 Population Total	Square Miles		Educ. & O&M Rate	All Other Tax Rates	Total	Fall 2022 Headcount	Annual FY 22 FTE		
503	BLACK HAWK	Moline	1	215,370	173,376	2,240	\$ 4,425,307,160	28.72	27.48	56.20	3,773	2,492	\$4,920
518	CARL SANDBURG	Galesburg	1	98,210	80,611	2,834	\$ 2,203,003,697	29.07	33.45	62.52	1,688	1,068	\$5,250
508	CITY COLLEGES OF CHICAGO	Chicago	7	2,696,555	2,202,614	230	\$ 89,478,355,786	14.52	0.58	15.10	34,795	23,553	\$4,380
502	COLLEGE OF DUPAGE	Glen Ellyn	1	1,050,733	843,244	350	\$ 49,686,334,408	17.05	3.44	20.49	21,939	13,508	\$4,200
532	COLLEGE OF LAKE COUNTY	Grayslake	1	686,203	545,975	442	\$ 26,222,377,910	28.41	0.93	29.34	11,651	7,822	\$4,500
507	DANVILLE AREA	Danville	1	78,647	62,623	1,288	\$ 1,197,443,545	44.19	16.61	60.80	1,924	1,234	\$5,250
509	ELGIN	Elgin	1	461,338	368,240	343	\$ 13,859,939,994	36.85	8.19	45.04	8,910	5,460	\$3,960
512	HARPER	Palatine	1	514,008	408,279	193	\$ 22,137,574,508	30.17	10.58	40.75	12,434	8,043	\$4,575
540	HEARTLAND	Bloomington	1	210,070	170,353	1,863	\$ 4,879,995,263	29.07	28.69	57.76	4,774	2,990	\$5,220
519	HIGHLAND	Freeport	1	84,862	69,838	1,640	\$ 1,989,048,380	35.50	20.37	55.87	1,184	1,056	\$5,730
514	ILLINOIS CENTRAL	East Peoria	1	359,612	285,939	2,322	\$ 7,400,552,376	28.99	19.76	48.75	7,044	4,251	\$4,650
529	ILLINOIS EASTERN	Olney	4	102,396	82,963	3,066	\$ 1,830,558,593	24.84	17.12	41.96	4,171	2,927	\$3,960
513	ILLINOIS VALLEY	Oglesby	1	142,808	116,641	2,058	\$ 3,700,149,334	29.07	7.48	36.55	2,371	1,588	\$3,990
530	JOHN A. LOGAN	Carterville	1	140,001	114,454	1,192	\$ 2,090,268,507	35.00	37.49	72.49	3,272	2,104	\$4,350
539	JOHN WOOD	Quincy	1	91,082	73,387	2,363	\$ 2,004,843,588	29.07	13.77	42.84	1,720	1,204	\$5,100
525	JOLIET JUNIOR	Joliet	1	646,804	510,793	1,434	\$ 23,638,860,656	24.56	3.94	28.50	10,212	7,783	\$4,530
520	KANKAKEE	Kankakee	1	129,642	104,084	1,586	\$ 2,781,568,687	29.09	21.05	50.14	2,333	1,410	\$4,950
501	KASKASKIA	Centralia	1	114,874	93,086	2,231	\$ 1,948,181,182	29.07	27.53	56.60	3,370	2,204	\$4,560
523	KISHWAUKEE	Malta	1	108,187	87,095	831	\$ 2,636,505,258	35.00	29.34	64.34	2,581	1,520	\$4,920
517	LAKE LAND	Mattoon	1	176,302	142,998	3,961	\$ 19,721,846	29.09	30.87	59.96	3,742	3,270	\$3,965
536	LEWIS AND CLARK	Godfrey	1	212,841	173,005	2,044	\$ 4,813,129,933	28.93	35.60	64.53	3,973	2,302	\$4,650
526	LINCOLN LAND	Springfield	1	325,084	264,196	4,115	\$ 6,980,568,355	33.86	15.81	49.67	4,444	3,617	\$4,590
528	MCHENRY COUNTY	Crystal Lake	1	268,140	215,108	600	\$ 8,752,734,710	32.02	0.89	32.91	8,874	4,756	\$3,848
524	MORAIN VALLEY	Palos Hills	1	403,574	323,167	133	\$ 11,649,102,061	27.18	7.85	35.03	10,511	6,880	\$4,680
527	MORTON	Cicero	1	153,422	126,239	17	\$ 2,132,706,707	45.22	7.54	52.76	3,753	2,175	\$4,440
535	OAKTON	Des Plaines	1	462,419	373,144	107	\$ 25,662,427,825	21.18	1.52	22.70	7,645	4,937	\$4,238
505	PARKLAND	Champaign	1	267,082	218,164	2,908	\$ 6,311,827,778	36.00	17.48	53.48	5,686	3,629	\$5,130
515	PRAIRIE STATE	Chicago Hgts.	1	209,159	169,936	220	\$ 3,652,692,114	41.09	5.76	46.85	2,680	1,970	\$5,220
521	REND LAKE	Ina	1	85,521	69,165	1,850	\$ 1,228,996,303	23.73	35.65	59.38	2,017	1,510	\$4,500
537	RICHLAND	Decatur	1	123,223	98,995	1,114	\$ 2,548,611,384	31.49	21.27	52.76	2,075	1,284	\$4,590
511	ROCK VALLEY	Rockford	1	356,549	283,349	1,033	\$ 6,683,597,509	27.00	18.22	45.22	5,861	4,078	\$4,110
506	SAUK VALLEY	Dixon	1	96,058	78,324	1,625	\$ 2,052,449,053	29.01	15.00	44.01	1,386	1,025	\$4,770
531	SHAWNEE	Ullin	1	53,322	43,843	1,466	\$ 697,705,444	30.00	39.95	69.95	1,174	977	\$4,200
510	SOUTH SUBURBAN	S. Holland	1	266,680	216,243	79	\$ 3,130,078,036	43.53	11.88	55.41	3,905	2,052	\$5,093
533	SOUTHEASTERN ILLINOIS	Harrisburg	1	48,222	39,823	1,656	\$ 638,591,343	37.40	52.81	90.21	1,379	768	\$4,260
522	SOUTHWESTERN ILLINOIS	Belleville	1	440,961	353,677	2,054	\$ 7,883,709,916	28.95	16.01	44.96	7,188	5,720	\$3,810
534	SPOON RIVER	Canton	1	62,579	52,187	1,566	\$ 1,017,312,830	29.07	36.21	65.28	1,212	731	\$5,490
504	TRITON	River Grove	1	326,982	260,846	55	\$ 10,882,512,735	25.19	3.50	28.69	8,616	5,521	\$4,770
516	WAUBONSEE	Sugar Grove	1	401,941	314,468	624	\$ 11,120,333,738	41.82	5.18	47.00	7,491	5,189	\$4,200
48			12,671,463	10,210,473	55,733	\$381,969,678,452	30.77	18.12	48.89	233,758	154,608	\$4,604	

Source: ICCB Data Book 2023



## ICCB – Summary of Opening Fall Term FTE Students

Illinois Community College Board											
Table I-11											
SUMMARY OF OPENING FALL TERM STUDENT FULL-TIME EQUIVALENT (FTE) ENROLLMENT											
FALL 2013 THROUGH FALL 2022											
Dist No.	District/College	2013 FTE	2014 FTE	2015 FTE	2016 FTE	2017 FTE	2018 FTE	2019 FTE	2020 FTE	2021 FTE	2022 FTE
503	Black Hawk	3,902	3,635	3,126	3,215	2,835	2,577	2,533	2,222	2,134	2,079
518	Carl Sandburg	1,498	1,416	1,333	1,311	1,276	1,203	1,217	1,076	1,043	1,039
508	City Colleges of Chicago	(38,054)	(35,172)	(31,148)	(29,562)	(29,128)	(28,517)	(25,726)	(21,802)	(19,565)	(20,401)
	Harold Washington	6,549	6,680	6,507	6,046	6,060	5,836	4,914	4,074	3,451	3,249
	Harry S Truman	6,449	5,808	5,149	4,830	4,453	4,370	3,498	2,867	2,616	2,971
	Kennedy-King	3,991	3,412	2,556	2,285	2,051	1,999	1,806	1,194	1,325	1,362
	Malcolm X	4,329	3,982	3,484	3,934	4,229	4,462	4,744	4,512	4,107	4,460
	Olive-Harvey	3,060	2,712	1,947	1,722	1,615	1,474	1,392	1,196	1,046	1,209
	Richard J. Daley	6,011	5,364	5,108	4,724	4,670	4,389	3,954	2,875	2,676	2,768
	Wilbur Wright	7,665	7,215	6,398	6,021	6,050	5,986	5,417	5,084	4,344	4,382
502	College of DuPage	16,565	16,858	16,310	15,133	14,633	13,677	13,329	12,080	11,655	11,777
532	College of Lake County	9,463	8,422	8,365	8,208	8,163	8,019	7,848	6,975	7,054	6,857
507	Darville Area	1,789	1,623	1,587	1,505	1,484	1,443	1,388	1,185	1,139	1,111
509	Elgin	6,675	6,385	6,052	5,773	5,679	5,577	5,732	4,816	4,712	5,016
512	Harper	8,721	8,693	8,353	8,131	7,908	7,740	7,713	7,264	6,862	6,878
540	Heartland	3,319	3,237	3,337	3,219	3,241	3,055	2,978	2,657	2,687	2,740
519	Highland	1,343	1,182	1,162	1,165	1,106	1,053	952	874	808	756
514	Illinois Central	6,189	5,862	5,585	5,318	5,242	5,008	4,892	4,347	3,984	3,788
529	Illinois Eastern	(3,334)	(3,268)	(3,236)	(3,127)	(3,015)	(2,850)	(2,667)	(2,431)	(2,270)	(2,256)
	Frontier	535	539	549	576	607	580	559	540	539	522
	Lincoln Trail	646	655	673	646	650	613	575	567	484	481
	Olney Central	960	910	874	755	767	749	710	638	666	653
	Wabash Valley	1,193	1,163	1,140	1,150	991	909	822	686	583	600
513	Illinois Valley	2,268	2,169	1,991	1,981	1,906	1,718	1,689	1,517	1,457	1,497
530	John A. Logan	3,081	3,052	2,426	2,649	2,575	2,530	2,378	2,122	1,859	1,974
539	John Wood	1,325	1,313	1,325	1,331	1,268	1,293	1,299	1,252	1,160	1,117
525	Joliet Junior	9,636	9,020	8,699	8,662	8,479	8,146	8,022	6,308	6,399	6,008
520	Kankakee	2,315	2,104	1,961	1,816	1,694	1,642	1,557	1,431	1,368	1,455
501	Kaskaskia	2,924	2,637	2,392	2,010	1,796	1,843	1,899	1,641	1,538	1,806
523	Kishwaukee	3,064	2,800	2,500	2,362	2,146	2,021	1,816	1,553	1,454	1,508
517	Lake Land	3,841	3,362	3,239	3,215	3,153	2,999	2,900	2,605	2,368	2,476
536	Lewis and Clark	4,348	4,087	3,962	3,566	3,375	3,283	3,153	2,539	2,282	2,147
526	Lincoln Land	4,453	4,323	3,987	3,620	3,677	3,468	3,413	3,123	3,019	2,807
528	McHenry County	4,171	3,880	3,739	3,584	3,747	3,777	3,893	3,976	4,226	4,256
524	Moraine Valley	9,965	9,651	9,345	9,152	8,825	8,340	7,712	6,410	6,065	5,943
527	Morton	2,723	2,585	2,596	2,467	2,485	2,402	2,391	2,019	2,054	2,043
535	Oakton	5,753	5,670	5,310	5,053	4,829	4,659	4,497	4,254	4,068	4,151
505	Parkland	5,057	5,101	4,925	4,719	4,386	4,297	4,003	3,528	3,250	3,376
515	Prairie State	3,109	2,812	2,805	2,630	2,579	2,305	2,242	1,618	1,505	1,602
521	Rend Lake	1,887	1,764	1,607	1,736	1,621	1,670	1,544	1,263	1,351	1,398
537	Richland	1,847	1,801	1,778	1,591	1,433	1,397	1,500	1,219	1,147	1,094
511	Rock Valley	5,245	4,940	4,872	4,936	4,126	4,078	4,033	3,817	3,633	3,669
506	Sauk Valley	1,413	1,379	1,221	1,194	1,094	1,028	1,046	915	872	885
531	Shawnee	1,098	1,075	1,078	1,057	903	891	843	862	648	707
510	South Suburban	3,228	2,703	2,523	2,256	2,060	2,067	1,939	1,645	1,566	1,663
533	Southeastern Illinois	1,091	1,024	1,043	930	878	837	870	701	666	729
522	Southwestern Illinois	7,261	6,792	6,382	6,169	5,751	5,514	5,388	4,510	4,583	4,310
534	Spoon River	982	987	986	985	918	846	848	757	746	688
504	Triton	6,304	6,030	6,126	6,098	5,883	5,812	5,411	4,796	4,836	4,785
516	Wauboonsee	5,761	5,671	5,457	5,361	5,007	4,825	4,613	4,129	4,324	4,124
	<b>TOTALS</b>	<b>205,003</b>	<b>194,485</b>	<b>183,870</b>	<b>176,797</b>	<b>170,303</b>	<b>164,405</b>	<b>157,873</b>	<b>138,237</b>	<b>132,358</b>	<b>132,913</b>

SOURCE OF DATA: ICCB Centralized Data System--Fall Enrollment (E1 Records)-reflects enrollment as of the fall term census date (end of registration). Will not reflect enrollments in courses that have a starting date later than the census date-particularly those in adult education.





## **Section VIII - Internal Affairs**



## Internal Affairs

### Employees

#### Total Employees by Status

	Total Employees	Full-Time Employees	Part-Time Employees
<b>Fall 2019</b>	338	170	168
<b>Fall 2020</b>	383	178	205
<b>Fall 2021</b>	325	172	153
<b>Fall 2022</b>	308	170	138
<b>Fall 2023</b>	305	172	133

Source: RLC Human Resources Department

#### Instructional Employees

Instruction	2019	2020	2021	2022	2023
Full Time	54	53	50	47	43
Part Time	66	66	63	54	59

Source: RLC Human Resources Department

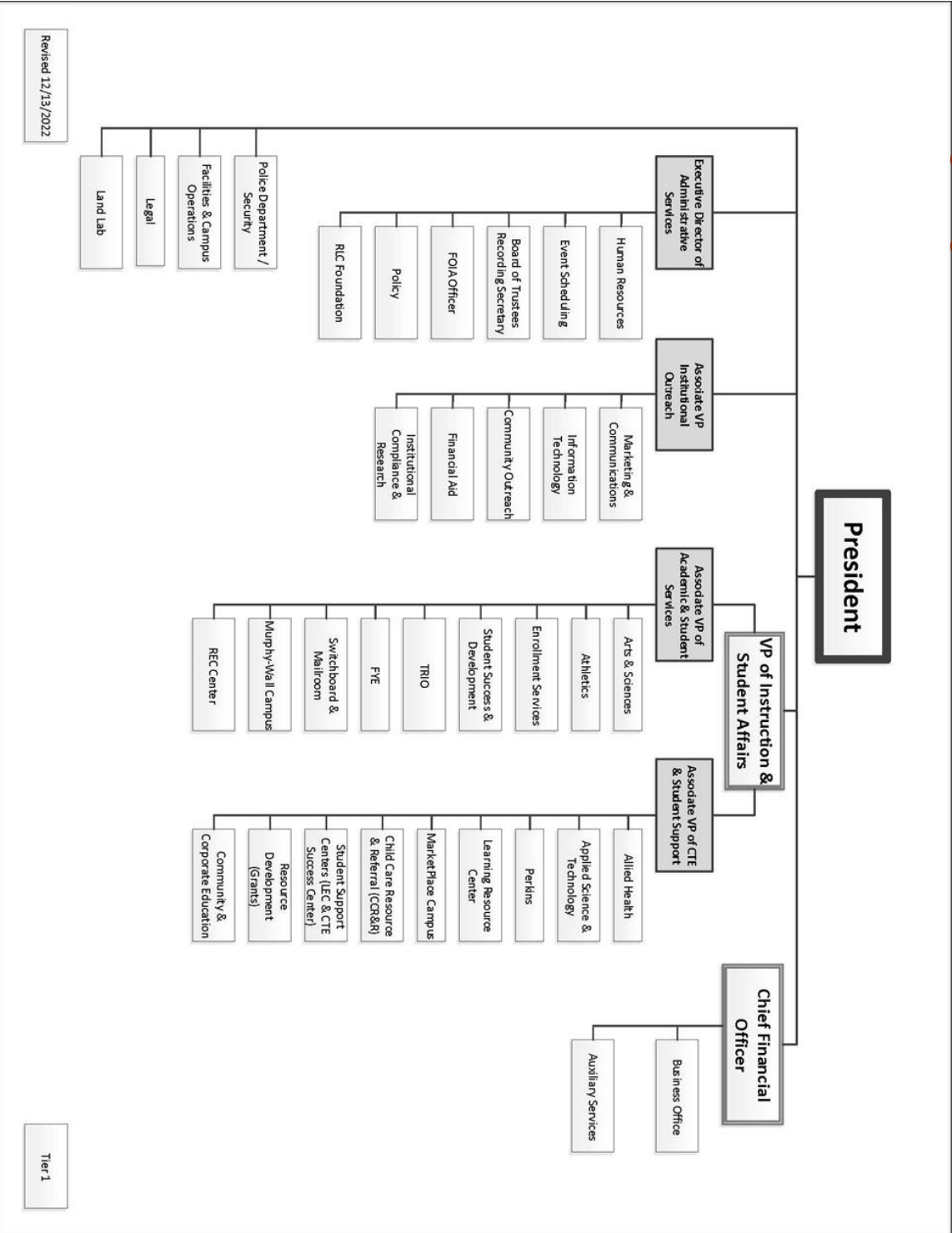
#### Student to Faculty Ratio

IPEDS 2018-19	19:01
IPEDS 2019-20	18:01
IPEDS 2020-21	17:01
IPEDS 2021-22	17:01
IPEDS 2022-23	19:01

Source: IPEDS Fall Enrollment Survey

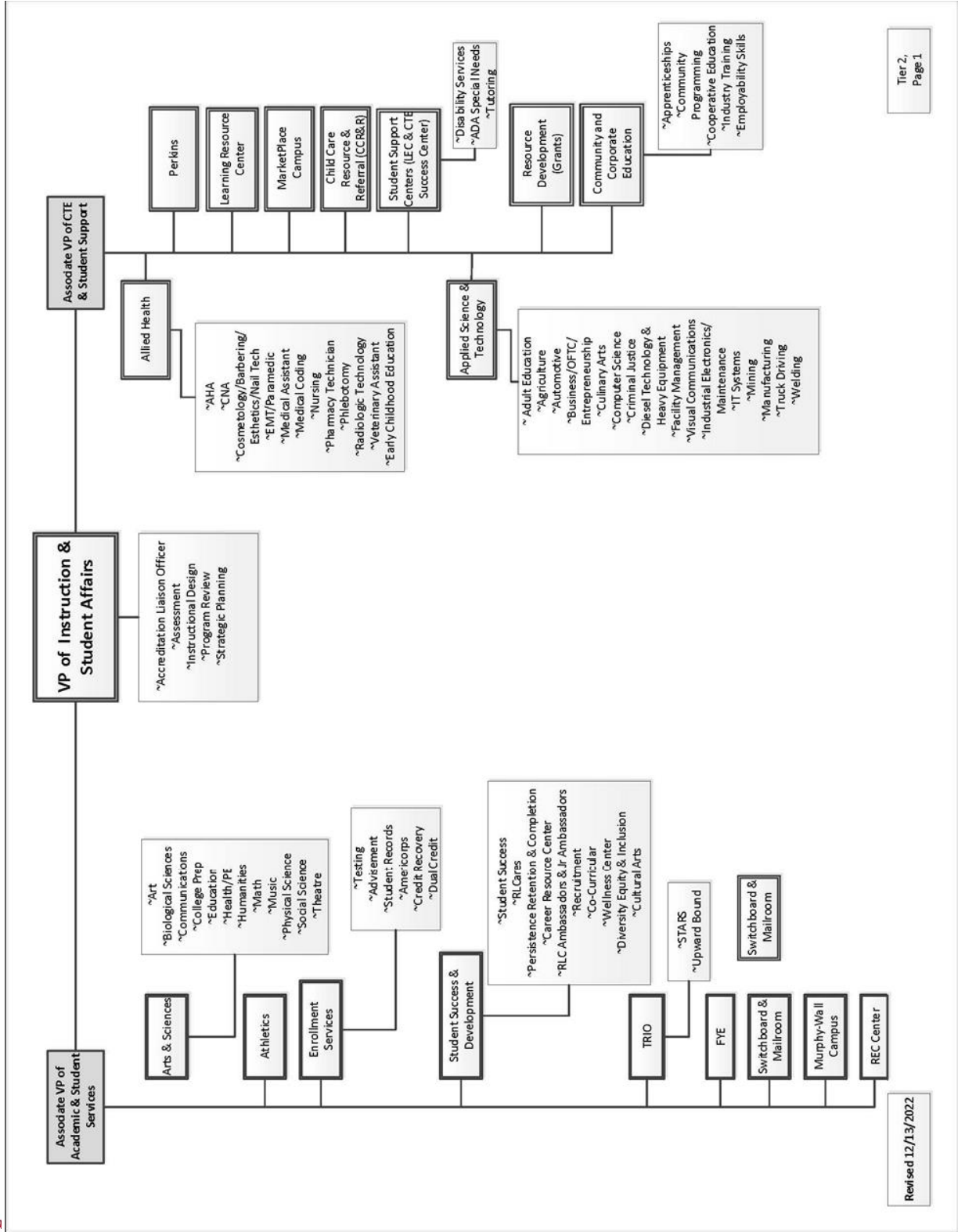


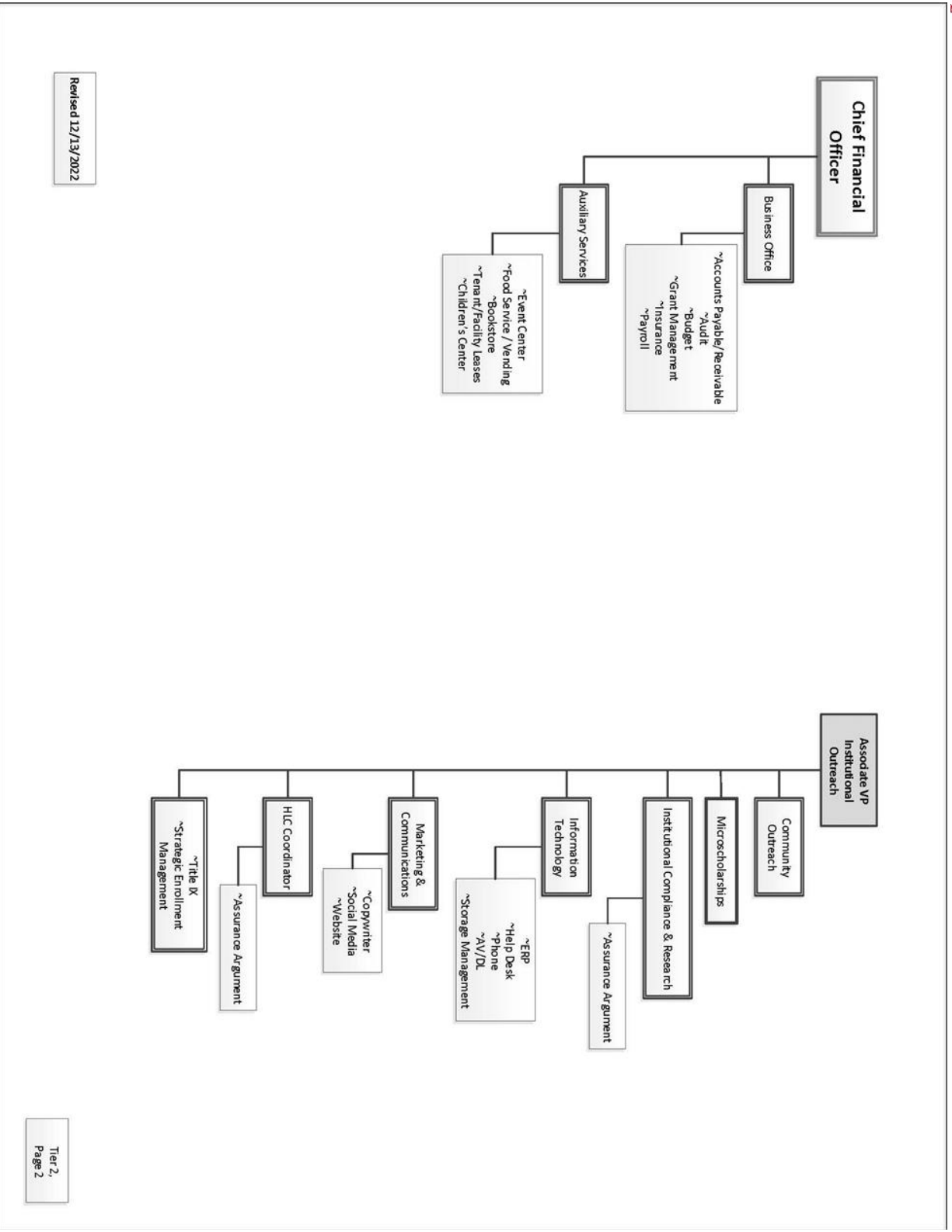
# Rend Lake College Organizational Chart



Revised 12/13/2022

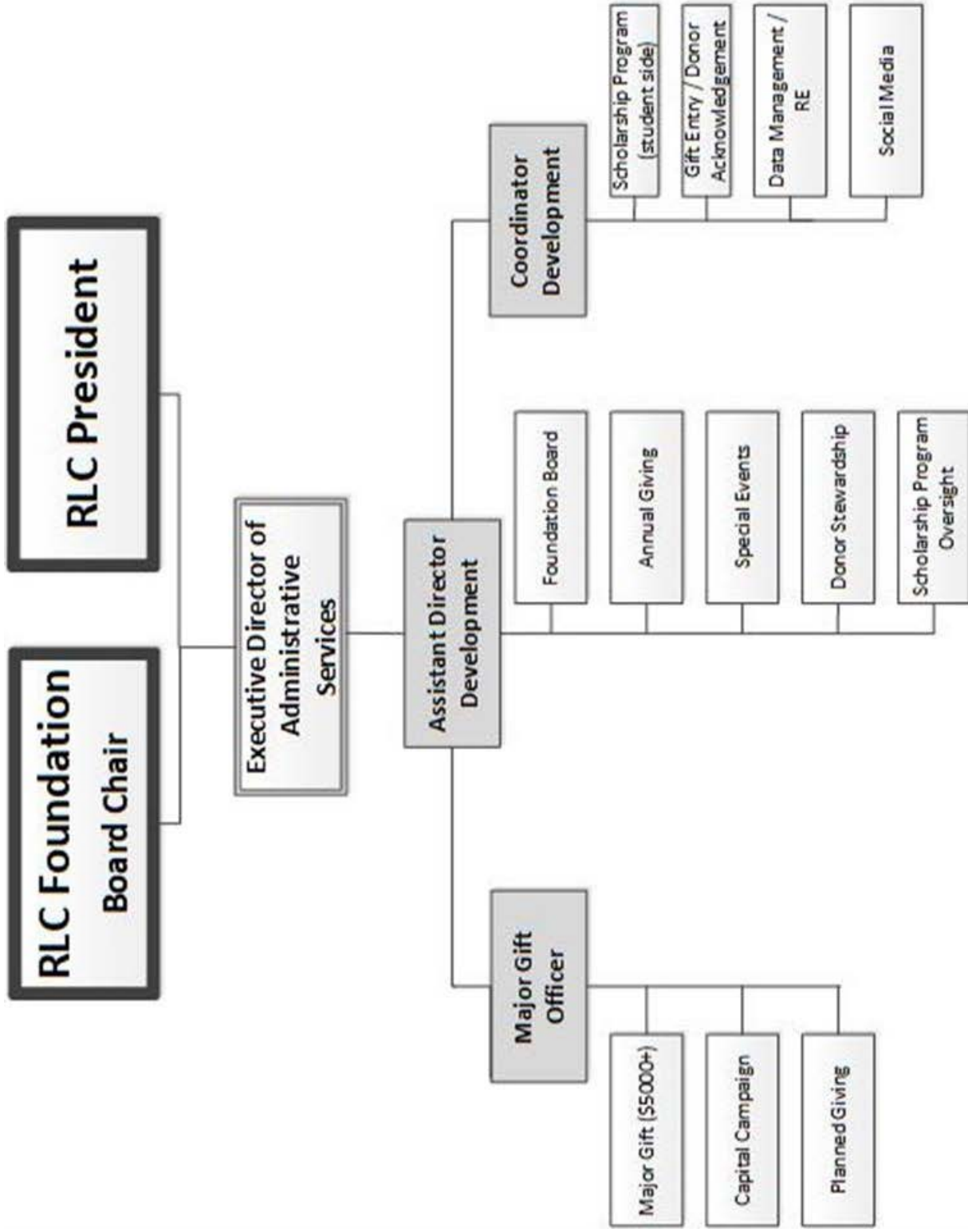
Tier 1





Revised 12/13/2022

Tier 2,  
Page 2





## Outstanding Faculty & Staff Awards

### Outstanding Staff Award

2014	Rachel Sveda
2015	Nathan Wheeler
2016	Joy Fitts, Ron Murray, Kent McKown
2017	Wesley Rush, Sue Cunningham
2018	Jena Jensik
2019	Lynne French
2020	Shari Carpenter
2021	Taylor Hutchens
2022	Heather Adams
2023	Chris & Glenna Maxwell

### Outstanding Part-Time Faculty Award

2014	No Nominees
2015	Eric Knapp
2016	Chris Edwards
2017	No Nominees
2018	No Nominees
2019	No Nominees
2020	No Nominees
2021	Bill Garlich
2022	Christine Emling
2023	William Reynolds

### Outstanding Faculty Award

2014	Barb Crouse
2015	Ricky Robinson
2016	Shari Carpenter
2017	Carrie Ragan
2018	Cindy Caldwell
2019	Brenda Heinzmann
2020	Jeannie Mitchell
2021	Nathan Brouwer
2022	Mike Meinert
2023	Jeff Keen

### Assessment Award

2013	Elizabeth Bailey-Smith
2014	No Nominees
2015	No Nominees
2016	Rob Little
2017	Sarah Bilderbeck
2018	Holly Heisner
2019	Alex Martin
2020	No Nominees
2021	Sara Alstat-Sanders
2022	No Nominees
2023	Mark Jornd

Source: President's Office



## Learning Resource Center

### Library Materials

	2019	2020	2021	2022	2023
<b>Total Collection (books, backfiles, other materials)*entire collection in Polaris</b>	14106	15384	7935	7843	7680
<b>Magazine Subscriptions (paper)</b>	37	37	0	0	0
<b>Newspaper Subscriptions (paper)</b>	3	3	0	0	0
<b>Electronic Resources (A to Z Resources)</b>	62	61	62	62	62
<b>Streaming Videos (STARTED 2019)</b>	23928	35644	39523	43739	47398
<b>E-Journals</b>	24174	25158	34235	33115	38493
<b>E-Books (EBSCO and Cloud Library)</b>	65000+	142485+	147488	155832	147170

### Library Services

	2019	2020	2021	2022	2023
<b>Circulation/Use of Library Material*</b>	1,348	1,156	569	1,519	1,316
<b>Reserve Collection Transactions</b>	231	198	0	0	137
<b>Total Interlibrary loans provided to other libraries</b>	2534	1910	972	1147	1680
<b>Total interlibrary loans received from other libraries</b>	444	450	290	1225	479
<b>Reference transactions</b>	87	138	131	20	14
<b>Number of library tours</b>	16	19	9	0	18
<b>Estimated Total attendance at library tours</b>	17	83	22	0	21
<b>Number of Information Literacy Workshops</b>	69	67	67	18	22
<b>Total attendance at Information Literacy Workshops</b>	1037	1330	380	480	251
<b>Number of searches in Electronic Databases</b>	92413	77562	23838	38745	34841
<b>Number of story hours for Children's Center</b>	79	49*	37*	21	19
<b>Estimated total attendance at story hours</b>	987	1169*	1107*	332	252

\*includes Facebook recorded story hour since COVID, participants include Facebook views

Sources: LRC stats, ACRL surveys, ILLINET traffic survey





## Program Labs

Program	Lab (Building/Room)
CNA & Nursing	LRC 201, LRC 203 (Nursing Labs)
CNA	RLM 230, RLM 236 (CNA Lab - Mt. Vernon Campus)
Medical Assistant	ATC 201 (Medical Assistant Lab)
Rad Tech	ATC 191 (Rad Tech Lab)
EMT/Paramedic	RLM 223 (EMS Lab - Mt. Vernon Campus)
Pharmacy	LRC 203 (Pharm/Nursing Lab)
Culinary Arts	STC 103, STC 120 (Culinary Labs)
Ag Mechanics	ASC 124, ASC 128, ASC 129 (Truck Bay Labs for Ag Diesel, Heavy Equipment & Mechanics) VOC 126 (Reconditioning Lab)
Ag Production & Management	ASC 128 (Truck Bay Labs for Ag Diesel, Heavy Equipment & Mechanics) VOC 126 (Reconditioning Lab)
Architecture	VOC 103 (Architecture Lab with Computers)
Automotive	VOC 123, VOC 124 (Automotive Labs)
Criminal Justice	ATC 143 (Criminal Justice Lab), Outdoor Range
Diesel Tech	ASC 128, ASC 129 (Truck Bay Labs for Ag Diesel, Heavy Equipment & Mechanics)
Graphic Design	VOC 104 (Graphic Design Lab with Computers)
Heavy Equipment	ASC 124, ASC 128, ASC 129 (Truck Bay Labs for Ag Diesel, Heavy Equipment & Mechanics)
Industrial Electronics	ATC 112 (PLC Lab), ATC 144 (Electronics Lab), ATC 151 (Robotics Lab), ATC 163 (Electronics Lab), ATC 166 (Hydraulics Lab), ATC 169 (Welding Lab), VOC 105 (Machine Lab)
IT Security Specialist	ATC 177 (IT Lab)
Manufacturing Technology	ATC 163 (Electronics Lab), ATC 166 (Hydraulics Lab), ATC 169 (Welding Lab)
Mining Technology	ATC 166 (Hydraulics Lab)
Welding	ATC 166 (Hydraulics Lab), ATC 169 & 170 (Welding Lab), VOC 105 (Machine Lab)
Cosmetology	RLM 362, RLM 364, RLM 365, RLM 376, RLM 377, RLM 408 (Lab for Cosmetology, Barber, Esthetics, Nail Tech)



## Information Technology

### Computer Lab (by Location)

#### RLC Campus

##### Academic Building (ACA)

- ACA 203 – 27 PCs for Math Lab
- ACA 204 – 23 PCs for English Prep Lab
- ACA 206 – 25 PCs for English Lab
- ACA 215 – 43 PCs for Classroom Computer Lab

##### Advanced Technology Center (ATC)

- ATC 112 – 7 PCs for Robotics Lab
- ATC 175 – 21 PCs for Computer Science Lab
- ATC 176 – 22 PCs for Computer Lab
- ATC 177 – 21 PCs for Network & Forensics Lab
- ATC 178 – 21 PCs for Programming Lab

##### Agronomy Innovation Center (AIC)

- AIC 107 – 22 Laptops for Mobile Cart

##### Applied Science Center (ASC)

- ASC 105 – 17 Laptops for Mobile Cart

##### Learning Resource Center (LRC)

- LRC 114 – 31 PCs for CTE Success Center (Quiet Study Room)
- LRC 128 – 18 PCs for Open Lab
- LRC 142 – 24 PCs for CTE Success Center/Nursing/Tutoring
- LRC 168 – 2 PCs for Study Room
- LRC 169 – 1 PC for Conference Study Room
- LRC 173 – 8 PCs for Study Room
- LRC 174 – 2 PCs for Study Room
- LRC 201 – 3 PCs for Nursing Simulation Lab
- LRC 203 – 1 PC for Nursing Simulation Lab
- LRC 205 – 31 PCs for Computer Lab
- LRC 206 – 31 PCs for Computer Lab
- LRC 207 – 31 PCs for Computer Lab

##### North Oasis (OSN)

- OSN 101 – 14 PCs for Math Lab
- OSN 116 – 8 PCs for Adult Ed Lab
- OSN 122 – 1 PC for Student Study Space
- OSN 123 – 1 PC for Student Study Space
- OSN 125 – 2 PC for Communications Lab
- OSN 131 – 7 PCs for LEC Lab

##### Science Building (SCI)

- SCI 108 – 7 PCs for Science Lab
- SCI 115 – 13 PCs for Science Lab
- SCI 137 – 21 PCs for Anatomy Lab

##### South Oasis (OSS)

- OSS 115 – 10 PCs for STARS Program Tutoring
- STARS Program – 19 Laptops for Loan Program
- OSS 131 – 6 PCs for Esports

##### Vocational Building (VOC)

- VOC 103 – 7 PCs for AutoCAD Lab
- VOC 104 – 9 Macs, 1 PC for Graphics Design Lab
- VOC 105 – 2 PCs for LNC, Laser Engraver
- VOC 111 – 17 PCs for Auto Classroom
- VOC 123 – 5 PCs for Automotive Bay

#### Additional Locations

##### Pinckneyville Murphy Wall Campus

- PNK 102 – 23 PCs for Open Computer Lab
- PNK 115 – 3 PCs for Study Area
- PNK 116 – 6 PCs for Science Classroom

##### Mount Vernon Marketplace

- RLM 226 – 10 PCs for SIU
- RLM 330 – 16 PCs for Adult Education
- RLM 338 – 31 PCs for Open Computer Lab



# Grant Awards

FY 2023- Agency	CFDA or Funding Opportunity #	Total Original Grant Request	Amount	Project Director	Description of Grant	Project Period
AmeriCorps-FY 2023 State and Territory Commission (New and Continuations)	CFDA# 94.006	\$363,044.00	\$260,544.55	Leeck	AmeriCorps members serve 1 year as tutors and mentors in public schools, with non for profit homeless shelters and with environmental agencies for a living allowance and an educational award.	07/01/2022 - 06/30/2023
*CBE Program Development	CFDA# 84.048	\$200,000.00	\$253,000.00	Ragland	Funding will be used for the purpose of designing a welding CBE program	18 month grant that began 03/01/2022
DCEO-Supporting Rural Apprenticeship	CFS# 420-30-0082 CFDA# 17.285	\$200,000.00	\$200,000.00	Odum	To research and enact evidence based strategies for enhancing services for individuals that meet the definition of special populations through Perkins Act.	01/01/2022 - 12/31/2023
*DOL/Parkland College-Strengthening Community College Training	CC-38940-22-A-17	\$84,214.02	\$84,214.02	Ragland	Funds will be used toward capacity building strategies for Industrial Maintenance/Technology and Welding	10/01/2022-09/30/2026
*Fed- Other Pass through Children's Center	Restricted Grant NA	\$14,402.65	\$14,402.65	Phillips	Provides reimbursements for nutritious meals and snacks to eligible children who are enrolled at participating day care centers.	10/1/21 - 9/30/22
Fed-ED-Title IV- STARS- Upward Bound	P047A220631	\$312,480.00	\$312,480.00	Moddemog	Program designed to assist low- income high school students who will be first-generation college students through tutoring, mentoring and career planning.	09/01/2022 - 08/31/2023
Fed-ED-Title IV- TRIO SSS	PO42A200613 - 22	\$317,998.00	\$317,998.00	Moddemog	Funds are designed to help eligible Rend Lake College students make the most of their college years by offering the counseling and academic support that may be needed to successfully complete a college degree and transfer to a four-year university.	09/01/2022 - 08/31/2023
Fed-State- ICCB- CTE-Perkins Postsecondary	CSFA# 684-00-0465	\$248,257.00	\$248,257.00	Shelton	Funds are dedicated to enhancing instruction and academic support activities to strengthen and improve career and technical programs and services.	07/01/2022 - 06/30/2023
ICCB- Adult Education	CFDA# 84.002 CFS# 684-01-1625	\$309,846.00	\$309,846.00	Stasko	Services provided include, but are not limited to, assessment, basic skills instruction, English language acquisition instruction, high school equivalency instruction, career awareness, workforce preparation, online instruction, bridge programs as well as accelerated education and training programs.	07/01/2022 - 06/30/2023
ICCB- Bridge Program	CSFA# 684-05-2840	\$220,000.00	\$220,000.00	Leeck	Funds will be used to increase student retention and completion. Improvement to processes and procedures to reduce student barriers.	07/01/2022 - 06/30/2023
ICCB- CAP-IT	CFS# 684-00-2549 CFDA# 84.048	\$43,000.00	\$55,038.50	Wilkerson	Funds will be used to expand existing industry-led customized apprenticeship through IT sector partnerships and to innovate new apprenticeship models for pilot and expansion.	07/01/2022 - 06/30/2023
ICCB- PATH	PATH-521-23	\$415,972.00	\$415,972.00	Wilkerson	Funds will be used to support and ensure that students have the required supplies, equipment and funds to be successful in their Allied Health Program.	07/01/2022 - 06/30/2023
IDPH- Early Childhood Access Consortium	CFDA# 93.575 FUNDING# ECE-52101-22	\$593,861.00	\$274,789.00	Adams	Funds are dedicated to enhancing instruction and academic support activities to strengthen and improve career and technical programs and services. (3 Year grant)	07/01/2022 - 06/30/2023
IGEN	IEPA-RERTF	\$15,000.00	\$15,000.00	Wilkerson	\$10,000 in funds were used to off set portion on liasion salary. \$5,000 was used for lighting at the MarketPlace.	01/01/2023-06/30/2023
IGEN	IEPA-RERTF	\$100,000.00	\$100,000.00	Wilkerson	Funds were used to purchase and install solar panel array to increase campus efficiency.	01/01/2023-06/30/2023
IGEN	IEPA-RERTF	\$13,360.00	\$13,360.00	Wilkerson	Additional funds were used to cover price increase for solar panel array.	01/01/2023-06/30/2024
IGEN	IEPA-RERTF	\$37,574.65	\$21,974.66	Wilkerson	Funds were used to replace traditional light fixtures and reimbursement of wages paid to internal staff responsible.	01/01/2023-06/30/2023
*NIFA- Beginner Farmers and Ranchers	CFDA# 10.311 FAIN# 20214940035606 Award# 2021-49400-35606	\$281,229.00	\$281,229.00	Patton	Funds will be used to provide workshops and industry tours.	9/1/2022 - 8/31/2023
Ross Dress for Less	NA	\$3,000.00	\$300.00	Wilkerson	Gift cards will be used for those students who cannot financially afford attire for school, job interviews, etc	12/20/2022
State/Federal-IDHS- Child Care Resource & Referral (CCR&R) Program	DHS 444-80-0211	\$1,264,133.00	\$1,264,133.00	Brockhouse	The Quality Improvement Funds grant program is offered through the Illinois Department of Human Services (IDHS) to offer continued quality improvement for child care programs. Quality Improvement Funds are designed to assist child care programs to improve program quality and achieve or advance an ExceleRate Illinois Circle of Quality.	07/01/2022 - 06/30/2023
State-ISBE-Early Childhood Pre-K Block Grant	2018-3705-00-13-041-5210-51	\$87,696.00	\$87,696.00	Phillips	Pre-K staffing, equipment, and training for the RLCF Children's Center	07/01/2022 - 06/30/2023
*State- SGCC- Strengthen and Grow Child Care Grant	ID# 200268	\$25,000.00	\$697.00	Phillips	Only \$697 was spent in FY23. The remaining funds were spent in the first months of FY24 on pay raises for part-time employees at RLCF Children's Center	05/01/2023 - 09/30/2023
USA Archery Collegiate Archery Program Grant		\$4,650.00	\$1,070.98	Millenbine	Funds will be used to purchase 3D targets and Cores	FY2023
ICCB- FY 2023 Trades School Grant Program	NA	\$138,351.00	\$238,351.00	Wilkerson	Funds will be used to assist with dual credit costs for students participating in trade school classes.	FY2023
<b>FY 2023 TOTAL</b>						<b>\$4,990,353</b>
**US Dept of Commerce-Southern IL Manufacturing Academy	CFDA# 11.307	Multi-year grant	\$4,934,400.00	Ragland	Funds will be used as the shared costs to create a Southern Illinois Manufacturing Academy.	6/28/2022 - 6/28/2026

\* Grant funding is outside institutional fiscal year 07/01/2022-06/30/2023 or grant may be multi-year grant

Disclaimer: This list includes, but not limited to, the amounts listed which may fluctuate based on spending during the grant period.  
Source: Grant Office November 2023



## **Section VIII – RLC Foundation**



## Foundation Financials

<b>Assets</b>	<b>FY 2022</b>
Cash and Cash Equivalents	\$193,484
Accounts Receivable	\$5,207
Investments	\$6,000,407
Unconditional promises to Give, Less Allowances for Uncollectible Promises	\$173,544
Property & Equipment, Net of Depreciation	\$18,526
Beneficial Interest in Perpetual Trust	\$375,109
<b>Total Assets</b>	<b>\$6,766,277</b>
<b>Liabilities &amp; Net Assets</b>	
Accounts Payable	\$3,420
Due to Rend Lake College	\$211,200
<b>Total Liabilities</b>	<b>\$214,620</b>
Net Assets without Donor Restriction	\$851,021
Net Assets with Donor Restriction	\$5,700,636
<b>Total Net Assets</b>	<b>\$6,551,657</b>
<b>Total Liabilities &amp; Net Assets</b>	<b>\$6,766,277</b>

## Foundation Information

For more information about the Foundation team, highlights, and articles, visit <https://info.rlc.edu/rend-lake-college-foundation>.