

The Pressing Times

Rend Lake College, Ina, Illinois

A Non-Profit Organization

Friday, September 8, 1978

Braun Named College President

"In all of higher education, the community college's ability to serve people, because of its local base and constituency, is where the action is."

This proclamation came from Dr. Harry J. Braun, the final selection of a laborious presidential search for Rend Lake Community College.

Braun, 37, is a native of the Midwest, originally from University City in Webster Groves, Mo.

Braun received his B.S. in Education with a major in Sociology, from Southwest Missouri State College in 1963. He obtained his masters degree in Educational Administration in 1966 from the University of Missouri at Columbia. His doctorate work was completed in 1969, also at University of Missouri.

Braun mentioned that on the graduate level, he was interested in pursuing study in the field of Anthropology as well as Education. "It was a tough decision at the time," said Braun, "but I don't regret it."

Braun has occupied several positions throughout his administrative career. Concurrent with study on the doctorate level,

he served as Assistant to the Director of Educational Placement. During this same period, he was also Assistant to the Dean of Student Affairs. He had experience as an elementary school principal at St. Paul's Lutheran's Elementary in St. Louis, Mo. He was also employed as Dean of Community Services at Illinois Valley Community College.

In 1974, Braun was appointed Dean of Instruction at Central Arizona Community College, Az. In 1976, during an administrative reorganization, he was promoted to Dean of the college, assuming additional responsibility.

His teaching experience includes instruction of social sciences at Parkway High School in Chesterfield, Mo., instruction of prospective teachers at both Northern University of Arizona and University of Missouri.

Braun was a member of the Board of Rotary International in Casa Grande, Az. He also acted as president of the congregation in the Trinity Lutheran Church at Casa Grande. Dr. Braun and his family are now residing in Mt. Vernon, Ill. and are visiting area churches.

Braun cited several reasons

why he was attracted to this position. He explained that through personal research, he perceived a very positive attitude toward RLC. According to Braun, meeting the screening committee and the Board of Trustees, convinced him that RLC operated with a quality staff and held high administrative standards. Braun also commented that the potential for growth at RLC is excellent due the area's steady development and supportive transportation routes.

Braun officially assumed his responsibilities as president on Aug. 8. Among his many responsibilities are: the professional management of the college, assisting in policy recommendations for board approval, presenting and developing the budget for board approval, supervision of all personnel and evaluation of all college operations.

"This college exists for the students," Braun emphasized, "through programs that are represented by quality content and staff, we hope to help students to grow and develop and achieve their goals." Braun went on to say that he hopes all

students will take advantage of the excellent resources offered by the college.

Among Braun's hobbies are model railroading and photography. He says he enjoys being physically active. He jogs, swims and plays tennis. While in college, his extra curricular activities were comprised

mainly of sports. He jokingly added as an undergraduate student his interest in athletics almost exceeded (though not quite) his interest in education.

"I attribute a certain portion of what I am today," Braun asserted, "to my experience with competitive athletics and being part of a team."



DR. HARRY J. BRAUN, RLC President

Kern Promotion

Mark Kern, 34, was appointed Dean of Instruction by the Rend Lake College Board of Trustees at their Aug. 15 board meeting.

Kern, a native of Ewing, began his career at Rend Lake College (RLC) in 1968 as an instructor in the agriculture department. At that time he played a major role in the development of instructional programs in the areas of agriculture production, mechanics and economics. He later served as chairman of the agricultural department from 1970 through 1974. Kern worked as Dean of Community Service from 1974 until now.

As Dean of Instruction, Kern will oversee the overall class scheduling at RLC and will be responsible for curriculum development and faculty development.



MARK KERN

Welcome Back

Whether you are a raw, untried freshman or returning as a rooted, well-seasoned sophomore, the staff of the "Pressing Times" bids you a cordial welcome and wishes you unequalled success during the forthcoming school year.

Also, we graciously receive and congratulate a new colleague, Dr. Harry J. Braun, making his presidential debut at Rend Lake College.

There are several student or-

ganizations that may be of interest to students. It is hoped that students will take advantage of these clubs and organizations during their educational experience at RLC. These clubs are the Agriculture Club, BASIC, Interior Design Club, Illinois Student Music Educators, AIME, Letterman's Club, Circle K Club, Students Education Association, Phi Beta Lambda, Phi Theta Kappa, Engineering Club, Tarn Yearbook, and the "Pressing Times."

Chorus Begins New Year

"Bring the whole family. We intend to have some fun and at the same time perform quality music," says Larry Phifer of the Community Chorus which will meet this fall in Mt. Vernon for the first time in several years.

The Mt. Vernon Chorus, under the direction of Phifer, will meet each Tuesday, 7:30-9:30 p.m. in the music room of the Mt. Vernon Junior High School.

According to Phifer, the Chorus has been divided into two choruses this year in a move to

better serve the communities of the college district. One will meet in Mt. Vernon and the other in Benton, with Courtney Cox the instructor. They will both meet at the same night for possible combined performances.

"We in the Arts and Communications Department feel that this is a good move in that it will encourage singers to participate who have, in the past, not participated due to the driving distance to the main campus. I really am looking forward to a

large turn-out and a really productive year for the choir," said Phifer.

All past choir members and anyone interested in performing a variety of choral music are encouraged to attend the rehearsal on Sept. 12. Anyone above high school age who is interested in singing is eligible, as no audition is required. Class registration for credit will be expected and can be arranged on Sept. 12 at the regularly scheduled rehearsal.



A COMMON SCENE during the past few weeks was students paying their fees for fall semester in the Administration Building. Even though these students appear pleased, many were surprised by the mid-summer tuition increase. See editorial on page 2.

Editorial

Tuition hike: A surprise?

This is the first issue of "The Pressing Times" for the 1978 fall semester. It would seem appropriate to write an editorial welcoming new students to campus or some other introductory form of writing. However, I feel there is an issue that deserves attention more than such an introductory editorial. That issue is the recent tuition increase.

The Board's action which raised RLC's tuition from \$7.50 per semester hour to \$11.00 per semester hour was inevitable. With increased operating costs, the Board of Trustees had no alternative.

However, the increase came after July 15, 1978. This was the date that tuition had to be paid if students' class registrations were to remain unaltered. Students should have paid their tuition prior to this date.

With this in mind, the tuition increase should have been made effective for the 1979 Spring semester. The increase put a strain on many of the budgets of RLC students. The subsequent billings were totally uncalled for.

In the future, tuition should not be raised without advance notice. If conditions should again warrant tuition increases, such increases should be made before tuition payments are due.

OPINIONS

The "Pressing Times" invites all readers to submit opinions and observations about newsworthy events pertinent to the college and surrounding communities. These letters might be corrected as far as punctuation, misspellings, and libelous statements are concerned. However, the letters will be presented as they are received as often as possible, with no alterations. Faculty and students alike are invited to participate. All letters should be put in the box beside the door of the newspaper office.

Letters to the Editor Tuition Up - Budget Cut

With a gritted smile and a fist full of facts I strolled into the Administration Building. Without any hesitation, I headed straight to my destination. I saw him sitting in his office, cool, calm and unaware. Robert Graham, Dean of Student Services, was about to be put to a 40 question and answer session.

In the past 2 weeks, people had put the question to me asking why the Student Senate's Budget, as well as other budgets, were cut. I would explain that R.L.C. had cut out about \$400,000.00 of expenses to make the budget balance. Then someone asked the magical question: the enrollment is up, each student pays a dollar student activities fee, why then a smaller budget for the Student Senate? Immediately, the

question hit like a ton of bricks. Not being able to answer this question I knew that I could go to the well of knowledge, Mr. Graham and draw from his wisdom.

After asking Mr. Graham to explain the reason for these cuts, he proceeded to explain without any difficulty. With \$400,000.00 less in this year's budget compared to last, something was going to have to go. After much thought and planning it was decided that virtually all the equipment expenses for each account would be cut out. In comparing this year's budget to last, I could see, he had his facts down. And also that this year's Student Senate's Contractual Services were up \$218.00. Of course we are out \$1350.00 equipment expenses but the rest

of the college has felt the same effect.

Having had all my questions answered and feeling better about getting the facts, I shook Mr. Graham's hand, thanked him and left. He has always treated students with respect and done all that he could for them.

As for the Student Senate, I am positive that they will function to the maximum as always, serving the students needs and representing them to the administration.

The reason that I wrote this editorial was for you, the students. I thought you might be curious to know where a small portion of your money goes. Until next Issue

Yours Truly,
Mark Michalic,
Student Representative

RLC Offers Flying

"Flying is safe and easy," according to retired Air Force Col. R. D. White, who is the instructor of Aviation at Rend Lake College (RLC).

Presently, RLC offers two courses in aviation, Primary Ground Operations and Primary Flight Operations.

These courses, which prepare one for obtaining a private pilot's license, are offered on Tuesdays at 6:30 p.m. in room 103 of the Academic Building.

In past years, RLC has offered the Primary Ground Operations class which instructs one in the principles of flying. Also, it prepares one to take the written test for the private pilot's license.

This year, in connection with the Primary Ground Operations, RLC is offering the Primary Flight Operations. This involves 40 hours of actual flying time out of either the Benton or Mt. Vernon airports.

The 40 hours of flying time includes 20 hours of duo and 20 hours of solo flying which will prepare one for the private pilot's flight test.

Col. White, a native of Benton, is currently the flight instructor at Rend Lake Airways in Benton. He will be assisted in the flight instruction by Jeff Martin, flight instructor at King City Aviation, and Don Wilcoxon, President of King City Aviation.



C. C. LOWERY

Lowery named as counselor

C. C. Lowery, Benton, has assumed the newly-created post as vocational counselor at Rend Lake College.

Lowery's position as vocational counselor involves helping the auto, mining, agricultural and architectural students coordinate their college schedules.

Lowery, 23, received his bachelor's degree in psychology in 1976 and his master's degree in guidance and counseling in 1977.

In addition to his position as vocational counselor, Lowery instructs an off-campus evening class in psychology at McLeansboro.

Health Seminars

Mental illness and its prevention will be the topic of discussion at a seminar being held on Wednesday, Sept. 13, in the college theatre from noon until 1 p.m.

Sponsored by the college's Health Department, the presentation, which is open to the public, is the first in a fall schedule of health related seminars. Instructors Wayne Arnold and Jim Waugh, along with Judy Skelton from the college Health Service, have arranged the series to help students become more aware of various health issues.

Future seminars will include speakers on alcoholism, drug use, family planning, venereal disease and weight control.

Ray Swift, of Comprehensive Services in Mt. Vernon and a former patient, will present the Sept. 13 program.

Students and faculty members are encouraged to attend.

that the band recorded before their tragic plane crash.

I have heard that tickets went on sale for BLACK SABBATH and VAN HALEN. Also tickets for UFO and CHEAP TRICK should be available soon.

I'll have more definite information on these and other upcoming concerts in the next issue. So until then, keep your ears open, if you hear of any new albums or good concerts coming up let me know and I will pass on the news.

PSYCHEDELIC DRUGS AND BOOZE are used less at concerts when groups like Wings, The Eagles, Fleetwood Mac or the Grateful Dead perform, according to a physician who specializes in treating fans at rock concerts. Dr. Jack Gutman, reporting in Gig magazine, said that older audiences at these concerts result in less peer pressure to use drugs or alcohol.

News Briefs

AN ALCOHOL EDUCATION committee at George Washington U. has asked the food services board to change the rules which now allow students to purchase beer with their meal coupons. Some students, the committee says, save up their meal coupons during the week and use them to finance their weekend beer drinking.

THE BOOKSTORE run by the Associated Students of the U. of California-Los Angeles reported an \$80,000 loss on the sale of new textbooks for the year. A low mark-up, a \$100,000 freight bill, a \$40,000 \$90,000 shoplifting and shrinkage loss, and a large number of books returned for one reason or another, were cited as reasons for the unprofitable operation.

Pressing Times staff members hear the news first! Won't you join us this year? For information, stop by our staff meetings each Wednesday at noon, in the Student Center Newspaper Office.

The Pressing Times is a student publication of Rend Lake College. It is published by students of the College for students and members of the community.

Opinions expressed are strictly those of the writer of the article and are not meant to represent the opinion of the staff, the student body, the faculty, or the administration.

The newspaper is located upstairs in the Student Center. The phone number is 437-5321, Extension 91.

Editor: Bill Dennison

Assistant Editor: Teresa Knox

News Editor: Mark Moschino

Sports Editor: Scott Anderson

Feature Editor: Pam McMahan

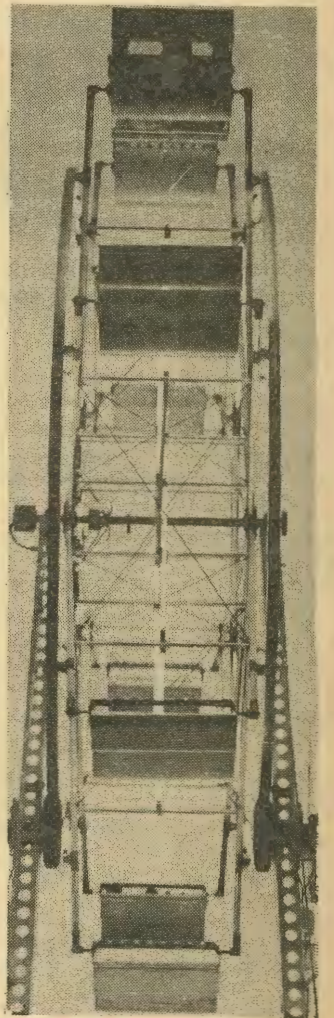
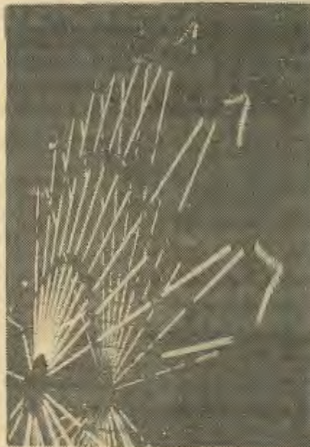
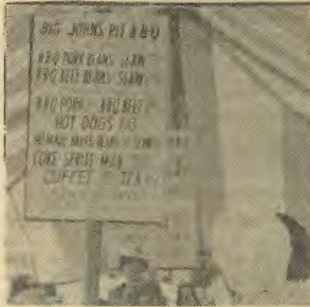
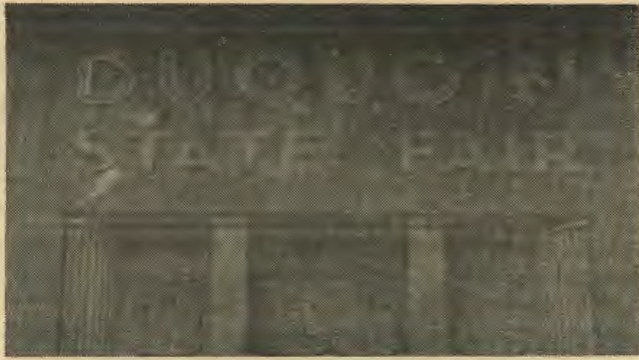
Business Manager: Pete Elko

Reporters: Brian Kimbro, Cynthia Beskidniak, and Randy Blaine

Photographers: Randy Blaine, Brian Kimbro, Pam McMahan, and Mark Moschino

Adviser to the Paper: Scott Mones

(a non-profit organization)



(Photos by Pam McMahan)

STUDENT DANCE
"EFFIC"
 FRIDAY, SEPTEMBER 8, 1978
 8:00 P.M. TO MIDNIGHT
 RLC STUDENT CENTER
 ADMISSION: \$1.00
 SPONSORED BY THE RLC STUDENT SENATE

EAT AT
"THE VILLAGE SANDWICH SHOP"
 DOWNTOWN COELLO

New Bank

Get a free Ina State Bank tee-shirt with a deposit of \$50 or more at the new branch office of the Ina State Bank, located north of the bookstore in the Student Center building.

Services available to Rend Lake College students include a variety of checking and savings plans with no service charge and cashing of payroll and personal checks (\$50 limit on personal checks).

A new addition to their banking services in "No Bounce Checking," instant money when you need it. Check with their friendly staff to see if you qualify.

Trying To Sell Something, Buy Something, or Even Borrow Something? Our New Classified Section Can Get The Job Done For You! Ad Rates Are Ten Cents Per Word.

PHONE 618/724-2441

POSITION OPEN:
R.N.'s and L.P.N.'s
IMMEDIATELY

Progressive 99-bed hospital in the heart of Southern Illinois' Shawnee National Forest now seeking R.N.'s and L.P.N.'s. Position provides attractive salary and benefits to the innovative and result oriented applicant. Contact Jim Ross, Personnel Director, Harrisburg Medical Center, Inc., 17 Country Club Court, Harrisburg, Illinois 62946. Telephone (618) 253-7671 — Ext. 303.



REND LAKE BANK

P.O. BOX 119 • CHRISTOPHER, ILLINOIS

CHRISTOPHER...THE BIRTHPLACE OF REND LAKE



Baseball Starts

The Rend Lake College baseball season opened this week. The season looks ahead to 24 games, including 12 home games. The team consists of 25 players with six returning from last year. Those returning are: Ritchie Clift, Terre Haute, IN.; Don Mundy, Terre Haute, IN.; Mike O'Rear, Coulterville, IL.; Randall Shiveley, Whitesville, KY.; Bob Smith, Terre Haute, IN. and Kent Strothman, Mt. Vernon, IL.

REND LAKE COLLEGE 1978 FALL BASEBALL SCHEDULE			
DATE	TEAM	PLACE	TIME
September 2 (Saturday)	Olney	Here (DH)	12:00
September 6 (Wednesday)	Shawnee	Here (DH)	1:00
September 8 (Friday)	Wabash	There (DH)	1:00
September 13 (Wednesday)	Kaskaskia	Here (DH)	1:00
September 16 (Saturday)	Southeastern	There (DH)	12:00
September 20 (Wednesday)	Logan	There (DH)	1:00
September 23 (Saturday)	Shawnee	There (DH)	12:00
September 24 (Sunday)	Olney	There (DH)	1:00
September 26 (Tuesday)	Wabash	Here (DH)	1:00
September 30 (Saturday)	Kaskaskia	There (DH)	12:00
October 4 (Wednesday)	Southeastern	Here (DH)	1:00
October 7 (Saturday)	Logan	Here (DH)	1:00

RLC Golf

According to golf coach Jim Waugh, Rend Lake College should have a pretty good golf team this year. He went on to say that since more players had gone out for the team this year, a much improved team should result.

Members of this year's team include Doug Dunbar, Benton; Juan Dominguez, Venezuela; Kevin Strothmann, Mt. Vernon; John Gamrat, Sesser and Doug Moore and Ted Smith, West Frankfort, with the possibility of one or two more players joining the team.

Waugh expects a tougher league this season with John A. Logan College being the team to beat.

SPORTS

No Track?

I'll bet a lot of you people out there are wondering why we don't have a track team. Well, I wondered the same thing. So, I asked the Athletic Director, Jim Waugh, about it.

"The main reason is that there would be no competition around here. The northern schools have track teams, but very few, if any, small colleges have a team around here." He added, "It would be better to start a jogging club."

There you have it folks, that's one reason we don't have a track team. Some people don't like to run in competition, but what if we had a jogging club? Would you join? How many of you students or faculty members are interested in jogging as a means to keep in shape?

Write down on a piece of paper how you feel about a jogging club and-or track team and drop it in the box next to the newspaper office. I'll try to answer your questions to the best of my abilities.

RLC Dance

The Student Senate will be sponsoring a "Back to School Dance" on Friday, Sept. 8, from 8 p.m. to midnight. The dance will be held in the Student Center and will feature the band "Effic." Admission is \$1.

REND LAKE COLLEGE 1978 WOMEN'S VOLLEYBALL SCHEDULE			
Date	Opponent	Place	Time
Tues., Sept. 19	Shawnee	Home	6:30
Thurs., Sept. 21	Wabash Valley	Away	6:00
Mon., Sept. 25	Kaskaskia	Home	6:00
Thurs., Sept. 28	Southeastern	Away	6:00
Mon., Oct. 2	John A. Logan	Home	6:30
Tues., Oct. 3	Shawnee	Away	6:00
Thurs., Oct. 5	Olney	Home	6:00
Wed., Oct. 11	Wabash Valley	Home	6:00
Thurs., Oct. 12	Kaskaskia	Away	6:00
Mon., Oct. 16	Southeastern	Home	6:00
Thurs., Oct. 19	John A. Logan	Away	6:30
Sat., Oct. 21	Olney	Away	6:30

REND LAKE COLLEGE GOLF 1978	
September 5—	Shawnee (Dual)..... H 12:00
September 7—	S.I.C.C. (RLC)..... H 12:00
September 11—	Logan Invitational..... T
September 12—	Shawnee (S.I.C.C.)..... T 12:00
September 14—	Parkland Invitational..... T 11:00
September 18—	Olney Central In..... T
September 21—	Kaskaskia (S.I.C.C.)..... T 12:00
September 25—	Lincoln Trail Invitational..... T
September 28—	Logan (S.I.C.C.)..... T 12:00
October 3—	S.I.C. (S.I.C.C.)..... T 12:00
October 5—	Shawnee..... T 12:00
October 10—	Wabash (S.I.C.C.)..... T 12:00
October 17—	Section at Lincoln Trail
October 27-28—	Region 4 at Joliet

Volleyball To Start

"Last year's team was competitive, although it didn't show up in the won-lost record," began John Kretz; Rend Lake College women's volleyball coach.

This is the second year of womens volleyball at RLC and coach Kretz said they hope to improve on last year's two and ten record. "This years squad has better overall depth, although there are no out-

standing individual talents; one of my most difficult decisions will be deciding who will play," explained Kretz.

This years team has four returning players: Pam Winder, Angie Zackman, Brenda Crocker, and Judy Smith. Kretz concluded by saying, "Hopefully we can hold our own with all the teams."

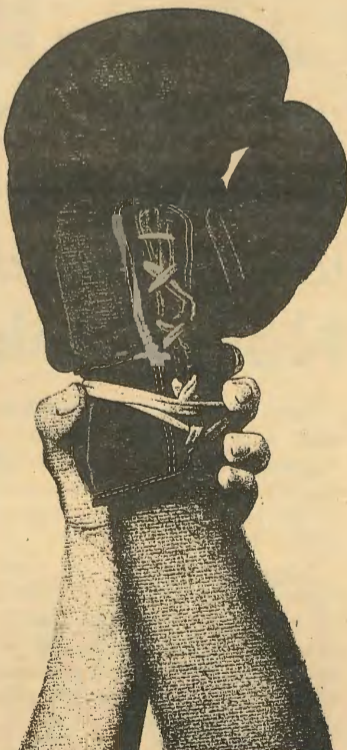
MEETING NOTICE...

At noon on Wednesday, Sept. 13, in the east classroom of the gym, there will be an organizational meeting for all persons interested in trying out for the Rend Lake College cheer-leading squad.

At the meeting, a date will be set for the tryouts.

Any full time student (ten hours or more) is welcome to try out.

The sponsor for this year is Lisa VanHorn, a former RLC cheerleader.



WE'VE GOT A WINNER!

REND LAKE COLLEGE 1978 WOMEN'S VOLLEYBALL ROSTER	
Name	High School
Pam Winder	Woodlawn
Angie Zachman	McLeansboro
Brenda Crocker	Sesser
Judy Smith	Mt. Vernon
Martha Abbott	McLeansboro
Cindy Beskidniak	Sesser
Penny Biggerstaff	McLeansboro
Cindy Caldwell	Christopher
Brenda Kondrlitz	Benton
Ellen LeGrand	Mt. Vernon
Toni Martin	Waltonville
Crystal Miller	Enfield
Donna Page	Benton
Kaye South	Enfield
Cindy Tucker	Benton
Dawn Webb	Benton
Barbara Whisenhunt	Mt. Vernon
Suzie Wolf	McLeansboro

Attention

The Yearbook Staff will take individual pictures of RLC students on Sept. 12 and 13 from 8 a.m. to 4 p.m. in the yearbook office.

Students will receive six wallet pictures for a charge of \$2.25. These pictures will appear in RLC's yearbook, the "Tarn". All students are urged to participate.

STUDENT DANCE
"EFFIC"
 FRIDAY, SEPTEMBER 8, 1978
 8:00 P.M. TO MIDNIGHT
 RLC STUDENT CENTER
 ADMISSION \$1.00
 SPONSORED BY THE RLC STUDENT SENATE

Your Best Assurance Is ...

INSURANCE

From

Ronald D. Huie
 INSURANCE AGENCY
 Phone 724-2325 Christopher