

PRESSING TIMES

Rend Lake College

Ina, Illinois

THURSDAY, OCTOBER 7, 1976



Expect The Unexpected

By Theresa Piper

"The unexpected." That's what psychology instructor Judson Dewitt said when asked what a social service volunteer could expect to encounter in the line of duty.

Dewitt was interviewed by a PT reporter after several area social service workers visited his psychology classes and asked for volunteers from RLC.

Representatives from Jefferson County Comprehensive Services, Franklin-Williamson Youth Services Bureau and Perry County H.E.L.P., Inc. came to RLC in search of volunteers to fill their empty ranks and to help people not as fortunate as most.

Area social service programs need volunteers to work with children, youth, and the aged. The alcoholic and drug abusers' programs also need someone who cares.

Dewitt made a point that a volunteer cannot "expect everything to come up roses," but also stated that the benefits outweigh the difficult moments. A volunteer can expect personal satisfaction and "good strokes from those they help."

Some well-funded area services can even provide volunteers with expense money to be used while they help others. And, if you're in any of Mr. Dewitt's psychology classes, Dewitt said he gives credit to students who work as volunteers.

Dewitt speaks from experience. At the present, he and his wife are working as volunteers in a Mt. Vernon nursing home. Once a week they go to the nursing home to talk or play checkers with residents and sometimes take them on walks. Some residents suffer

from neglect and when someone gives them a little love they give back tenfold. Dewitt said it just makes him feel good.

If you would like to work with any of these programs call the following numbers: in Franklin and Williamson counties-439-6338, in Jefferson county-242-1510, and in Perry county-542-4352 or 384-8162

Blackouts A Success

By Terri Samuels

RLC's "Black-Outs" was a knockout--but only in the sense that the student and staff variety show ended in a successful production.

"Our raw talent was of a higher level than the first year we had the show," stated director and RLC speech instructor Cheryl Folley.

She also complemented the production crew. "It was a good kick-off for the school year and especially the Fine Arts Department."

The \$300 receipts exceeded last years' \$250 scholarship total. All receipts of the show will fund "Black-Outs Scholarships" to be presented to two freshmen in the spring.

Nominees for the scholarship are selected by faculty members and the recipients are chosen by a board of three sophomore students who participated in "Black-Outs."

The nominees must have an overall three point average and show service to RLC. Last years recipients were Perry Morris and Kelly Munbower

First Concert Set

The RLC Collegiate Choir and Community Chorus will give their first performance at 8:15 p.m., Tuesday, Oct. 12, in the Little Theater.

By Melissa Outland

Collegiate Choir, directed by Larry Phifer, will sing the following songs: "Songs Mein Grossmama Sang", including "Fraulein Bo Peepen", "Jack der Spratt", "Jack and Jill", and "Johann Horner"; "From the End of the Earth", "Sing Praises", "King Jesus is A-Listening", "Joy so Delights my Heart", "Te Deum Laudemus", and "Sometimes I Feel Like a Motherless Child."

Under the direction of Keith Drayton, the Community Chorus, which consists of members of the community interested in singing, will sing the following: "Alleluia", "Antiphonal Hosanna", "The Last Words of David", "Sure on This Shining Night", "My Bonny Lass", and "Shenandoah."

Tickets for the choral concert are \$1-adults, and \$.50-students. No seats will be reserved.

Enrollment Figures Are Up

By Mitch Fulford

RLC tenth day enrollment figures are up again this year, according to RLC Dean of Student Services Robert Graham.

Graham told the college Board of Trustees, at their monthly meeting, that the head count of the Fall semester, is 2056--up 501 over last fall at the same time.

Graham said that by mid-term the number of students could climb by several hundreds or even a thousand, with the implementation of off-campus night classes.

Illinois State reimbursement to the college is based on a full-time equivalent average or FTE. RLC's present FTE is 1426. Last year's FTE was 1108.



Kelly Mumbower, one of RLC's leading hitters, connects with the ball Oct. 2 as the Warriors shut-out Wabash 7-0, 7-0. For full baseball coverage see page 8. Photo by Danny Tennant

POETS' CORNER

I live in a shadow
 A shadow of someone's mind
 A shadow of someone's soul
 I am me; but yet
 I am a totally different person
 I live one life
 but feel that I have lived
 past lives
 I see places, people, times, years
 that I have
 only read about
 but I can still feel them, see
 them,
 measure them. . .
 Who is this other Person in me?
 What other past lives exist in me
 I see tall, high places; the Alps
 I see hills, flowers, a star
 I see people; one person-----
 the one source of past friendship
 one person; all knowing
 important---
 I know this person
 I can feel this person
 Who am I? I must know!
 Reincarnation - Validated by
 Karmic laws
 of is it non-existent,
 oblivious, A mirage; an
 occultation of the mind?
 . . .
 In the lowest dells
 of my subconscious
 it does exist
 as an audible susurraton on my
 astral being;
 my soul,
 A mind of Deja' Vu!

WHERE IS HOME?

The last piece of earth disappeared today.
 Cement, blacktop, decorator stone,
 Cover it all in an unflattering way.
 I wonder where is home.

Trees reside in large concrete pots,
 Looking alive, but plastic to touch.
 Kids now play on gravel lots.
 I miss home, oh, so much.

The food is produced artificially,
 In laboratories the work is done,
 Like fishing in a waterless sea.
 Home is where I want to run.

Life is planned from beginning to end.
 A lover is not the same,
 Whose computer card you cannot bend.
 Home, you have lost your name.
 Richard Wilken

There was graffiti to create some
 cheer
 It stated flatly "I was here"
 A statement like that, not to be
 passed by
 Led to the question "Who is I?"
 The answer was very clear to see
 It merely stated "I is me"
 And in the style that is so true
 Questioned back "Who is you?"
 Well things could never crazier be
 Because it also happens that
 "You is me"
 Since both are not allowed to be
 the same,
 One of the two must get a name.
 If not done there is no chance to
 be free,
 It will be written that "You and
 I are we!"

Damien Anders McKenzi
 why sing your song of old
 they've went and killed your sister
 A Lie you must have told

Damien Anders McKenzi
 Don't sing your song to me
 for I'll be damned to Lucifer
 'fore I'm a kin of thee

Damien Anders McKenzi
 you've done a wicked thing
 so bear the mark and be prepared
 Your Soul to follow me!

PRESSING TIMES

Published bi-weekly by the
 staff of The Pressing Times,
 Rend Lake College, Ina, Ill.,
 62846.

We have our office on the
 balcony of the Student Center.
 The PT is printed by the
 Daily American, West Frank-
 fort, Ill.

The views expressed in
 this paper do not necessari-
 ly reflect those of the facul-
 ty, administration, or stu-
 dent body.



Issue Editor: Becky Harvey
 Sports Editor: Chuck Doty
 Technical Editor: Terry Winter
 Advertising: Bob George
 Photographer: Kevin Williams
 Typists: Jean Page
 Tracey Salyer

Adviser: Dr. Evelyn Claxton

(EDITOR'S NOTE: The editorial page of
 the Pressing Times is open to the entire
 college community. The staff welcomes
 letters, which must be signed, but the
 staff will withhold publishing the name
 if there is a good reason. Letters can
 be edited for taste or length. Poems and
 other creative writing work are welcomed
 and will appear in the paper most issues.)

By Richard Wilken

Activities

Holland Gets Grant

Cecil Holland, RLC veterans administrator, is presently enrolled in a one year course of study at SIU-C to become placement coordinator for RLC.

Holland was one of 15 people accepted into the "Pilot Program for Training Placement Personal." The class is being funded by the Department of Adult, Vocational and Technical Education.

This service will be handled by Holland in addition to his duties as the Veterans Affairs Director at RLC the coming year. At the present time he is taking job requests from employers and students and trying to co-ordinate them.

Box Step Back

Old time ballroom dancing is coming back.

RLC now has a dancing class with over 50 students. Because of the great interest in the class, RLC will be offering a new class starting in October. It will be held at the Moose Lodge, Mt. Vernon.

More detailed information will be given in local newspapers.

Writing Contests Offered

Creative writing students, here's your chance!

International Publications is now offering two outlets for your literary ambitions: (1) the National College Poetry Contest, and (2) the Collegiate Creative Writing Contest.

The Collegiate Creative Poetry Contest, Fall Concours 1976, offers \$195 cash prizes, and free printing for all accepted poems.

The Collegiate Creative Writing Contest for short stories offers a total of \$600 in cash and book prizes, and free editorial services. All entrants will receive a free copy of College Contemporaries Magazine.

For further information, contact Evelyn Claxton, NO 147.

BASIC Makes Plans For Year

"We would like to welcome everyone to Basic," stated Kara Beth Neal, president of Brothers and Sisters in Christ.

"During the hour we meet, we share and pray for spiritual strength," said Miss Neal. BASIC meets on Wednesday at noon in the Student Center.

A youth fellowship meeting with students from John A. Logan College is also being planned.

Members of BASIC will be attending a fall conference in Edwardsville Oct. 15-17. On Sept. 29, Mr. Bob Blattner, from Springfield, Mo., spoke to the BASIC group on summer missions.

Kolojeski Visits

Paul Kolojeski, SIU-C doctoral student in English, was guest speaker in one of RLC's Classical Literature classes on Thursday, Sept. 23.

The husband of RLC art instructor Susan Kolojeski, Kolojeski is employed as Associate Textual Editor at the Dewey Center at SIU, a special section of the SIU PUBLISHING COMPANY devoted to editing and publishing the works of John Dewey, noted American philosopher.

RLC instructor John Traver normally teaches the Classical Literature class, but on his invitation, Kolojeski read excerpts from Beowulf in the original Anglo-Saxon text.

To illustrate the change in language from Anglo-Saxon times to present, Kolojeski gave the class a handout of the Lord's Prayer written in Anglo-Saxon.

AG Students Plan RLC Farm

By Sharon Heil

Agriculture students at RLC are gaining first hand experience in farm management by working in the campus--based farm production program.

According to Carroll R. Turner, RLC farm manager, 90 acres of college--owned land is planted in corn and on additional 60 to 70 acres planted in beans.

Although the actual manual labor is done by an RLC maintenance employee, the students are in charge of the management.

Their responsibilities include preparing soil samples, reconditioning equipment, and operating the budget.

RLC owns \$91,000 worth of new equipment. A gross profit of \$39,236.40 is expected. Fuel, labor, repair and seed expense is expected to amount to \$37,821.60, leaving a net profit of \$1,414.80.

RLC receives all net earnings.

Nursing News

By Elaine Valette

"Our LPN's are busy gals," stated the head of the Health and Science Department, Ed Kownacki.

The RLC Licensed Practical Nursing students screened over 350 people for diabetes on Aug. 28. On Sept. 21 they took the blood pressures of the senior citizens from Mt. Vernon and Waltonville.

With the help of the Jefferson County Homemakers Extension Association, the LPN's sponsored the Sweetcorn and Watermelon Festival in Mt. Vernon.

The students will soon be involved with the Swine Flu vaccinations.

News Engineering

The first meeting of the Engineering and Science Technology Club was held on Friday, Sept. 10, 1976 with 13 present under the supervision of Mr. Richard Heaton. Yearly officers were elected at this time: president, Dennis Krug; vice president, Kevin Pestka; secretary, Beverly Lawson; treasurer, Micheal Leyerle; events chairman, Dean Miller; reporter, Tom McAffoos.

Plans for the year include; a tour of the General Tire Plant in Mt. Vernon and a trip to Old Ben's Underground Mine. A future bake sale is being planned for early October.

200 Attend Coal Movie

The showing of "Illinois Coal-The Challenges" was a success, with approximately 200 students attending the movie.

The A.I.M.E. would like to think SIU representative Charles Knuth for showing the movie.

A.I.M.E. presented a Coal Miner statue to Mrs. Dawn Yunkus at the showing to the movie, for helping with the movie.

Waterbeds "lull" you into a sound sleep. You don't toss and turn as on spring mattresses because there are no pressure points to cut circulation.

SOONER OR LATER, YOU'LL BE SLEEPING ON A WATERBED...

WITH AN AQUA QUEEN HEATER!

DREAM STATION WATERBED SHOP
515 S. 10th
Mt. Vernon
Tues-Fri. 2-8
Sat. 10-8
244-4588

INTERNATIONAL THESPIAN TROUPE
no. 3299
presents---
GEORGE WASHINGTON SLEPT HERE
by Moss Hart & George S. Kaufman
Benton High School, East Gym
October 28 & 30
8:00 P.M.

Features



(Pressing Times photo)

Work Study Jobs Are Available

Work study jobs on campus for students needing financial aid are still available, with jobs to be filled in secretarial, maintenance, automotive, agriculture, and L RC. Pay is \$2.30 an hour.

"If you haven't filled out an ACT Need Analysis application, do so as they are very important in determining your working hours, advised Mrs. Cox.

BEOG checks are now in Mrs. Cox's office for those who turned in forms and haven't picked up checks.

The midterm BEOG checks will be in during the last part of October. Four checks will be given this year instead of the two previously given.

If anyone is interested in more information, he should contact Financial Aids Director Leslie Cox, NO 138.

Local Man Directs RLC Mining Program

Meet Brad Evilsizer! Brad is the Chairman of the Mining Technology Department at Rend Lake College, one of the fastest growing areas on campus.

He was born and reared in southern Illinois and has been away from home just long enough to get some valuable training in Coal Mining. (That probably explains why he never lost his very typical southern Illinois accent!)

Evilsizer graduated from Christopher Community High School in 1956 and then attended V.T.I. at Southern Illinois-University. He worked at Freeman United Coal Company from March 1956 to July 1974, at which time he

received training in state and federal qualifications. During the summer of 1974, Brad taught classes for the U.S. Bureau of Mines in Benton.

Evilsizer has co-ordinated his own training programs, both in electrical qualification and in maintenance training.

Brad has been a counselor for the Boy Scouts of America, is President of Christopher Saddle Club, and has served in several capacities at the First Christian Church in Christopher, where he and his family are members.

Evilsizer and his wife Mary - ann, have two children, Melody 11 and Brian 14.

Art Class Sees Slides

By Sharon Heil

Charles Swedlund, SIU-C photography instructor, showed slides of his photography collection to Susan Kolojeski's art appreciation class Friday, Sept. 24.

He also had an assortment of samples of his collection so students could see the uniqueness of early photography techniques. Among them were the first silver-plated copper positives known as daguerreotypes.

Swedlund gave the class copies of "Types of Photographs" by George Eastman House.

Swedlund admits he looks for interesting photos for his collection rather than important or historic ones. Some of his collections have become valuable art objects.

Swedlund has written two books on photography and is recognized nationally as a result of his work in studying the history of photography.

300 Vets Attend RLC

This semester RLC has approximately 300 veterans and dependents of veterans attending classes. Of this number 230 are attending under the V.A. Education Bill.

Of the total number of veterans and dependents at -

tending, 75% attend full time. Their courses of study are varied and include most programs offered at RLC. For the past two years veteran enrollment has averaged 250, according to Cecil Holland, RLC Veterans Affairs Director.

Ina State Bank
Ina, Illinois 62846

The Ina State Bank offers no service charge on checking accounts regardless of balance plus the first 50 personalized checks are free.

To open an account by mail contact Bobbie Sheridan, Assistant Vice President or stop by the bank at your convenience.

Ina State Bank
Ina, Illinois 62846

Phone : 437-5341

MEMBER FDIC

RLC Students

(Photos for this page by Kevin Williams.)



These two were hitting the books so hard the camera flash didn't even bother them.



O, for the life of an RLC student, communing with nature...and books.



Looking into the future (next summer?) already?



Tight-rope walking? What RLC instructor teaches tight-rope walking?



Some people may feel the need to study but most of us can always find better things to do.

Caught In The Act

Features

Women Enroll In Ag

By Becky Harvey

Ladies start your tractors! More and more women are enrolling in ag programs each year. This year at RLC, two young women are enrolled in the ag program.

They are Jana Estes, Mt. Vernon and Tina Hampton, Christopher. Both are freshmen.

Jana decided to enroll in the ag program last spring when she chose to come to RLC.

Tina made her decision way back in her sophomore year in high school.

When asked why they enrolled in a program dominated mostly by men, Jana said that not many girls are in ag. Tina was raised on a livestock farm and knows about farm operations. Her high school ag teacher also helped her make her decision.

Jana and Tina haven't been put down for their career choice, but they have been teased. On the first day of school, Jana walked in to a class and the men snickered. She just laughed right along with them. Now the men are nice, she reports.

There seems to be no problems with the teachers, either. "The teachers treat you like a person," Tina says. Jana said that when Dr. Luchsinger asked a question in Written Communications class, she asked her the women's opinion too.

What do their families think of their career choice?

Tina's family is happy about it and Jana said hers thought it was "pretty neat."

This semester, the women are studying ag economics, animal science and ag occupations along with Health and Written Communications. They will study feeds and fertilizers next semester.

At the end of the school year, they will also be a part of the On-the-Job-Training program.

Both women believe in time more women will go into vocational areas. They believe that any women interested in the ag program should sign up for it.

Jana and Tina also believe that the ag program at RLC is a good one.

Future plans for Tina include going to SIU and becoming an ag business teacher. Jana hasn't decided what she will do yet.

If you know of any students in need of a part-time or full-time job, have them contact Mr. Holland in the Admissions office or call 437-5321 at Extension 75.

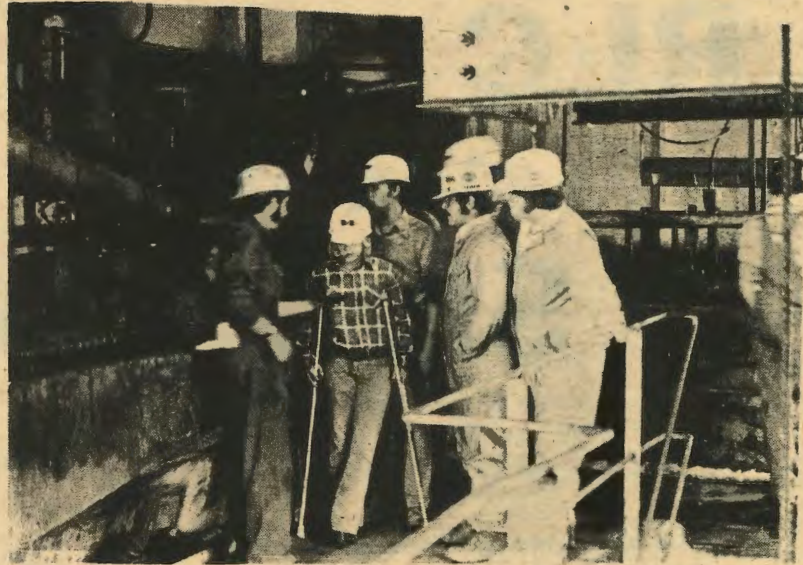


Photo by Terry Winters

Ernie Kovacks, Bill Kinley, Brian Fitzpatrick, Bob O'Brien and Tammy Melvin observe as Foreman Paul Barnett explains preparation plant operations.

Class Visits Plant

On Thursday, Sept. 23, Mining 222, Preparation Plant Maintenance and Repair, made a field trip through the preparation plant at Freeman United Orient #3 mine at Waltonville.

The main purpose of this trip was to follow the flow of coal from the time it arrives on the surface until it becomes a cleansed product to be used for the gener-

ation of electricity, or for metallurgical purposes.

Students were given the opportunity to see the manner in which coal is crushed, sized, washed, dried, and to examine the various mechanical devices which perform these duties.

The number of students that attended was 30. They were accompanied by Jack Musgrave, mining instructor.

Building Under Way

Construction is underway for the new mining technology building. The contractors are:

General work—Lipps Construction Co., Mt. Vernon.
Electrical work—F&W Electric Co., Mt. Vernon.
Heating, Ventilation and air conditioning work—Easter Sheet Metal Co., Mt. Vernon.

Plumbing work—H&H Plumbing, Heating and Electric Co., Mt. Vernon.

The size of the mining building is 120 feet long and 60 feet wide. The building is divided into four special labs and four classrooms.

The construction foreman, Mr. Chambless, said he hopes the new building will be finished by the last of November.

Classified Ads

NOTICE! INTERESTED IN FORMING A STUDENT WORKERS ASSOCIATION?

Contact Chuck Eckert at the Bookstore, or Shirley Clark at the LRC.

FOR SALE: Multi-colored frisbees \$1.00 each. Contact Ron Stanart.

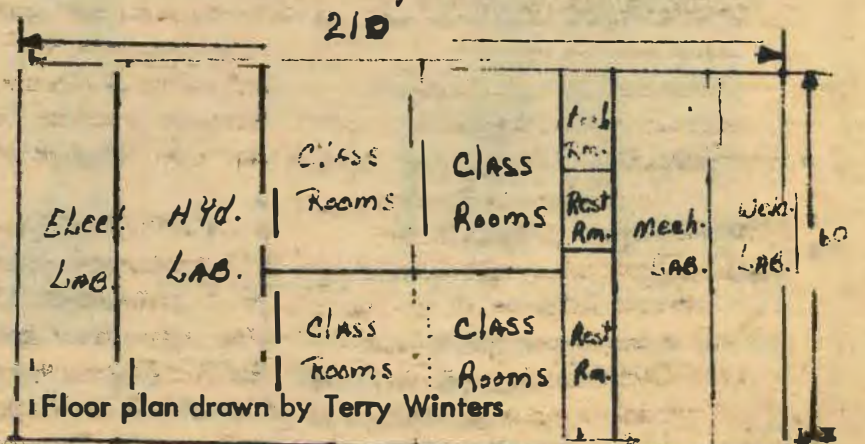
WANTED: Babysitter, part-time, must have car, call 244-1910.

DREAM STATION WATERBED SHOP is now open. Leather and jewelry items are also in stock. "When you think Waterbeds, Think Dream Station". 515 S. 10th, Mt. Vernon, west of Park Plaza Shopping Center. Ph 224-4588.

WANTED: Cocktail waitress, full or part time.

Apply in person after 5 p.m. Mt. Vernon, Holiday Inn, 244-3670.

New Tech. Mining Building Floor Plan



SPORTS

Golf Team Ends 2-3 Conference Season

By Chuck Doty

Varsity golf, under the direction of Coach Waugh, closed out its conference campaign Sept. 30, with a disappointing 313-333 loss to Logan Junior College. The defeat dropped the linksmen final duel record to 2-3.

Two days earlier, behind the formidable John Ellis's 66, six under par, RLC outstroked Kaskaskia J.C. 345-358.

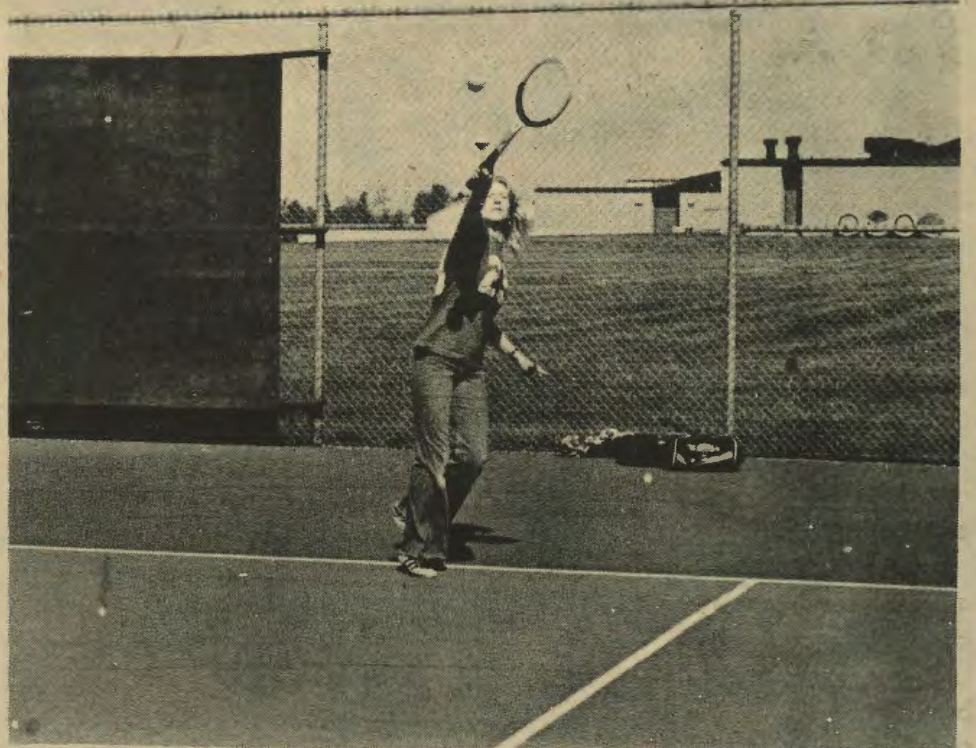
Sept. 23 at Shawnee College, RLC combined the talents of Mark Connaway, Doug Simmons, Don Redden, Mark Satterfield and John Ellis to completely destroy the host team 336-359.

John Ellis of Mt. Vernon won low honors with a solid even par 72.

RLC traveled to Lincoln Trail to participate in the annual Robinson-Lincoln Tourney, Sept. 27. The linksmen finished 16th in a field of 23 teams.

Sept. 2, RLC dropped a duel meet to Wabash Valley 245-258.

An added golf note to all interested golfers. During the week of Oct. 11-16 there will be a faculty and staff golf tourney. The tourney will be held at Indian Hills in Mt. Vernon and the entry fee is only \$2.00. For more information contact RLC athletic director Jim Waugh.



RLC tennis courts have been getting hard play with the extended summer weather. Some of the most frequent racquet-eers have been faculty members. Coach McClure frequently takes on Myron Foley and Keith Drayton. Other faculty and administrators seen on the courts from time to time are Barbara Tomek, Mark Kern, Leavell Swink, Susan Kolojeski, and Evelyn Claxton. Wayne Arnold is teaching a fall tennis class and RLC will field a tennis team in the spring so the college reflects the national turn to tennis.

SIDELINE VIEWS

By Ron Stanart



With high school football schedules nearing the midway mark and the baseball Warriors fighting hard for an SICC title, let's take time out for a preseason look at what will soon be dominating the sports scene at the JC level, basketball.

Prospective cagers are now working out on their own, running a 1.7 mile course layout three times a week in preparation for the October 18th tryout date.

Competition promises to be keen for this year's Warrior edition as Coach Jim Waugh anticipates anywhere from 20 to 30 boys to tryout for the team.

One thing for certain at this point, there appears to be a lot of height on campus this year.

The Warriors will face one of the toughest schedules in the history of the school as they play some of the top teams in the nation this season. At the same time, they will be trying to improve upon last season's mark of 12-17.

That's about all I can say at this time. Keep looking to the PT for a roster of this year's players and some facts about them when that information becomes available. A RLC Warrior basketball schedule for 76-77 will also be printed at a later date.

INTRAMURALS

By Chuck Doty

Men and Womens basketball, volleyball, shuffleboard, and tennis make up this year's intramural athletic program according to Sports Information Director Wayne Arnold.

Basketball, cited by Arnold as "the most popular sport in recent years, will feature free-throw and one-on-one tournaments. Arnold figures the intramural cage season will get underway sometime in March, "Since that seems to be the time that people enjoy basketball the most."

Volleyball is off to a slow start this year.

"In a commuter college like RLC, it's difficult to have team sports such as volleyball," Arnold explained. "There just doesn't seem to be any time that the people can get together and play. Right now the only time we can play is Wednesday at noon."

Shuffleboard and tennis tourneys have been scheduled for later in the year. Posters will be placed around the campus giving information on the starting dates of these activities.

REND LAKE WARRIORS 1976-77 BASKETBALL SCHEDULE

Fri., Nov. 19--Here
 Tues., Nov. 23, Danville--There
 Tues., Nov. 30, Olney --Here
 Thurs., Dec. 2, Shawnee --Here
 Tues., Dec. 7, St. L. Christian --There
 Thurs., Dec. 9, Logan --Here
 Mon., Dec. 13, Parkland --Here
 Wed., Dec. 15, Southeastern --There
 Mon., Jan 3, Chipola, Fla --There
 Tues., Jan. 4, Gulf Coast, Fla--There

Tues., Jan 11, Kaskaskia--Here
 Thurs., Jan. 13, Wabash Valley--Here
 Sat., Jan. 15, Kankakee--Here
 Mon., Jan. 17, Oaklanc City, Ind.--Here
 Wed., Jan. 19, Shawnee--There
 Fri., Jan. 21, Northwood, Ind.--Here
 Mon., Jan. 24, Lincoln Trail--There
 Wed., Jan. 26, Logan--There
 Fri., Jan. 28, Greenville--There
 Tues., Feb. 1, Athletics for Christ--Here

Thurs., Feb. 3, Southeastern--Here
 Tues., Feb. 8, Kaskaskia--There
 Thurs., Feb. 10, Jefferson, Mo.--Here
 Sat., Feb. 12, East Central, Mo.--There
 Thurs., Feb. 17, St. Louis Christian--Here
 Sat., Feb. 19, Wabash Valley--There
 Feb. 21, 22 & 24--Section VIII Tourney at RLC
 March 3, 4, 5--Reg. LV Tourney, Danville
 March 21, 26--Nat'l Tourney, Hutchinson, Ks.

Warriors Rack Up 10 Wins



Photo by Danny Tennant

The 1976 RLC baseball team: Bottom row, left to right, are Doug Caldwell, Ron Brackett, Bill Dickenson, Tom Brown, Dennis Cox, Derk Garrett, Davey Scott, Kevin Hutson, Wayne Schmitt, Jack Smith, and Kevin Higgins. Standing, Coach Mike McClure, Bob Rainey, Martin Wagner, Doyle Miller, Jay Sandusky, Neal Sluder, Chris Valentine, John Klein, Wayne Middleton, Dave Boldt, Phil Thompson, and Kelly Mumbower.

By Mitch Fulford

The RLC baseball Warriors are coming on strong this fall, with a record of 10 wins and 4 losses.

Led by Coach Mike McClure, the Warriors took their first two wins from Shawnee College 7-0, 7-0 in a doubleheader played on Sept. 13.

Two days later, the Warriors traveled to Carterville to meet rival John A. Logan College, the defending Southern Illinois Coll-

ege Conference champs and defeated them twice, 11-1 and 3-0.

Then on Tuesday, Sept. 21, RLC met its first defeat at the hands of Southeastern College, 17-5 and 5-3.

At home with a winning record of 4 and 2, the Warriors took Kaskaskia in both games of a doubleheader, 10-5 and 12-2. It was revenge for the Warriors as Kaskaskia kept RLC from going on to the state championship last

spring.

Then the Warriors stepped down again, this time to Wabash Valley as Wabash defeated RLC by scores of 5-0 and 8-0.

The RLC nine improved their record to 10 wins and four losses by sweeping a doubleheader from John Logan last Saturday at home.

In the first game the Warriors won 8-3, picking up 10 hits and committing two errors. RLC pitcher Jack Smith allowed Logan

only five hits while striking out 10 batters in 7 innings.

The Lakers continued to produce fine hitting as Dennis Cox and Kevin Hutson went two for three and Chris Valentine went two for four, driving in two runs.

The Warriors won the second contest by a 5-4 score, picking up all 5 runs in the fifth inning.

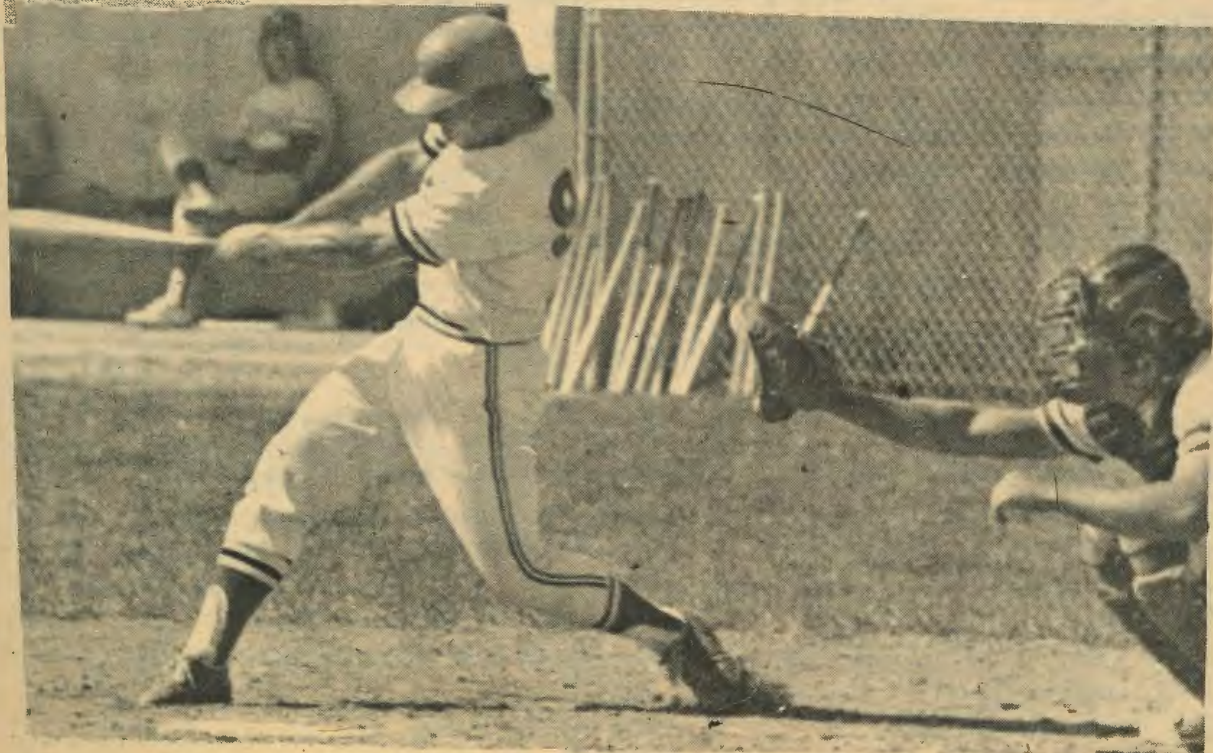
Key hits in the RLC attack were a lead-off triple by Chris Valentine to start the fifth, and a two-run double by Kevin Higgins. The Warriors banded out five hits while Dave Boldt allowed only two Logan hits in 7 innings of play.

Here are the Southern Illinois College Conference Standings:

Wabash Valley	12-2
Southeastern	11-3
RLC	10-4
Kaskaskia	4-10
Logan	2-10
Shawnee	1-11

RLC cannot afford to lose any more games this fall. Any loss could mean a loss of the conference title.

Oct. 9	Kaskaskia (A)
Oct. 13	Wabash Valley (A)



RLC Catcher

Rob Raney

rips a single

to left field

against

Kaskaskia.