



CLOCKTOWER CHRONICLE



It's beginning to look a lot like winter

According to meteorologists, it's going to be a long winter! They predict the winter season could last through February. Grab a coat and stay warm! (Taylor Blankenship / Clocktower Chronicle Staff Photographer)

RLC Foundation Annual Dinner celebrates 'pathway of success'

BY REANNE PALMER

RLC PUBLIC INFORMATION

Each stage of education at Rend Lake College was highlighted last week at the RLC Foundation's Annual Dinner, held at the Holiday Inn in Mt. Vernon on Dec. 4. Both starting and ending with the RLCF Children's Center (RLCFCC), the dinner emphasized the "pathway to success" and the full circle education makes at RLC.

Jim Muir, the night's master of ceremonies, said it best in one sentence, "No matter where you're at in life, Rend Lake College can be your pathway to success." Muir, the 2009 Alumnus of the Year, began the night's events by introducing Marjorie Farrar, the

catalyst and driving force who made the lead donation of \$100,000 to the RLCFCC in 1995 and then encouraged her friends to do the same.

Farrar's donation was matched by local businessman Coyne Mateer and the ball started rolling to build the center, which opened in 1998. Farrar, though unable to attend the Annual Dinner, was thanked by several of the center's former students.

"I learned many things at the Rend Lake College Foundation Children's Center," said Austin Crouse, son of RLC Pre-School Head Teacher Rene Crouse, and a fifth grader living in Salem. "Some of the things I learned were how to talk, walk, say my

ABCs, and do addition. It gave me a great start."

Brothers Chase and Nathan Ragland of Sesser said that, though they are too old for the Children's Center now, they both anticipate coming back to campus in the future. As the children of Lori Ragland, RLC dean of Community and Corporate Education, Chase and Nathan both spoke about the friendships they made on campus.

"I made many of my lifetime friends there and I look forward to coming back every year for the Kids Summer Camps," said Nathan Ragland.

"I remember that, every day, I couldn't wait to get back to school," added Chase Ragland,

now 16 years old and one of the first Children's Center students.

"My favorite part was taking walks through the beautiful campus and sometimes running into my mom. I hope to see you all in a few years when I come back to Rend Lake as a college student."

Next at the podium were two RLC students who received scholarships through the RLC Foundation. RLCF CEO Shawna Bullard introduced Austin Endicott (Macedonia) and Gwendolyn Upton (Texico), and added she was thankful for all the donors who continue to give so that these students can keep reaching for their dreams.

"Scholarships are a huge part of what the Foundation does.

They're a big deal," said Bullard.

"It's so hard to read stories, like those from Austin and Gwen, and have to make the decision of who should receive a scholarship or how much. Thankfully, I have a wonderful scholarship committee and donors, and together, I think we make the best decisions."

Endicott said the Foundation scholarship he received this year from the State Bank of Whittington has made a huge impact on the journey he's making through his education. His personal pathway to success started when he was a senior in high school, living on a friend's couch and with no

Dinner continues on page 2

Changes coming to EMT, Paramedic programs at RLC for Spring 2015

BY REANNE PALMER

RLC PUBLIC INFORMATION

One course at Rend Lake College is all it takes to get started on an exciting career in emergency medical care. And the options don't stop there.

Starting this spring, students at RLC can enroll in a new certificate program, Emergency Medical Technician (EMT) Basic, which will take one semester to complete. This one-course program consists of nine credit hours and is a prerequisite for the Paramedic program, which is available in a certificate or associate degree format.

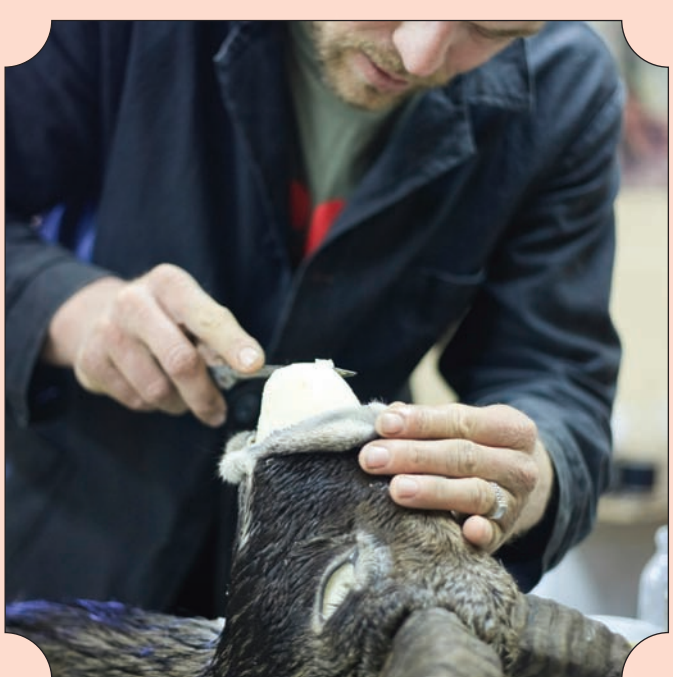
The EMT Basic course is offered from 5:30 - 9:20 p.m. Tuesdays and Thursdays starting Jan. 13 at the RLC MarketPlace, Room 221, in Mt. Vernon. In addition, a hybrid Emergency Medical Responder course will be held. This class is made up of online instruction with five face-to-face meeting times: 6 - 8:50 p.m. on Mondays, Jan. 24, Feb. 7, Feb. 21, March 21, and April 18, also at the RLC MarketPlace, Room 221. RLC is also offering three

classes for the EMT Paramedic program this spring: The online Drug Dosage Calculations class, starting Jan. 12; Paramedic Services III, which meets from 5 - 9:50 p.m. Tuesdays and Thursdays in MarketPlace Room 222 starting Jan. 13; and Paramedic Clinical II starting Jan. 12.

Enrollment already has begun for the two programs. While the certificate program is new in itself, there are other changes coming to Emergency Management education at RLC. New simulations and technologies are putting students in contact with more realistic scenarios than ever before.

"Rend Lake College has always valued Emergency Management, and constant updates are necessary to maintain the high quality education our community values," said Leslie Harmon-McKenzie, American Heart Association Training Center Coordinator. "For example, in 2008, RLC developed a simulated ambulance to teach students how to function in

Programs continues on page 2



Start your taxidermy project with instructor Fred Lawrence on Jan. 8. Call (618) 437-5321, Ext. 1714.

Taxidermy class starting in January 2015 at RLC

BY REANNE PALMER

RLC PUBLIC INFORMATION

Start the new year off with some hands-on experience learning the art of taxidermy by preserving, mounting and displaying an animal skin, such as a bird, deer or other small animal. The Rend Lake College class will begin Thursday, Jan. 8, 2015.

Participants will need to bring a thawed animal and

a scalpel or sharp knife to the first session. Instructor Fred Lawrence will help evaluate each individual project and additional costs for supplies may occur. When registering for taxidermy, please specify the species you plan to mount and a project supply list will be mailed. Fish are not rec-

Taxidermy continues on page 2

Strange BUT TRUE

BY SAMANTHA WEAVER

KING FEATURES

It was American author and illustrator Oliver Herford who defined a manuscript as "something submitted in haste and returned at leisure."

A football in an NFL game lasts, on average, only 6 minutes.

If you're planning to visit Chicago anytime soon, you might want to keep in mind that in that city, it's against the law to dine in any establishment that is on fire.

One Washington state prison offers inmates cats to aid in their rehabilitation.

In 1856, a soldier of fortune (who was also a journalist, doctor and lawyer) by the name of William Walker and his hand-picked group of mercenaries took over Nicaragua. Walker appointed himself dictator,

thus securing for himself the distinction of being the only native-born American citizen to become head of state of a foreign nation.

You might be surprised to learn that the Earth experiences a million earthquakes every year; however, most of them are so small that they aren't even noticeable.

If you counted up all the McDonald's, Dunkin' Donuts, Pizza Hut, Burger King, Domino's Pizza, KFC, Wendy's and Taco Bell locations in the United States and added them together, you still wouldn't reach the number of pharmacy locations across the country.

Barbra Streisand once had a shopping mall installed in the basement of

Strange continues on page 2

INSIDE:

Turkey Leg Announces Top 3	2
What To Watch And What To Listen To	3
Athletics	4
Classifieds	5

Programs
continued from page 1

their working environment. Now, the college has added CodeRed technology to aid our students with patient care documentation and make the simulation even more realistic."

Harmon-McKenzie said that after graduation, students are eligible to sit for the National Exams, based on the college's Letter of Review for CoAEMSP (Committee on Accreditation of Educational Programs for the Emergency Medical Services Professions) program accreditation.

"While we still value the EMS hospital-based labora-

tory and the simulation mannequins that can even talk to the student, our outstanding instructional staff with a combined experience of over 60 years in EMS education contributes to the highest quality of EMS instruction in the region," said Harmon-McKenzie.

According to the U.S. Bureau of Labor Statistics, EMT and paramedic job opportunities are continuing to grow across the country and will increase by 23 percent, or 55,300 jobs, between now and 2022.

To learn more about the EMT Basic and Paramedic programs at RLC, contact Harmon-McKenzie at (618) 437-5321, Ext. 1418, or hodgel@rlc.edu.

Taxidermy
continued from page 1

ommended for this class. Taxidermy will meet from 6 – 9 p.m. Tuesdays and Thursdays, Jan. 8 through Feb. 3 in the Advanced Technology Center, Room 151, on the Ina campus. The cost of the class is \$119, plus the cost of supplies. To register, contact Stephanie Smith in the RLC Community and Corporate Education Department at (618) 437-5321, Ext. 1714, or visit online at www.rlc.edu/com-ed for more information.

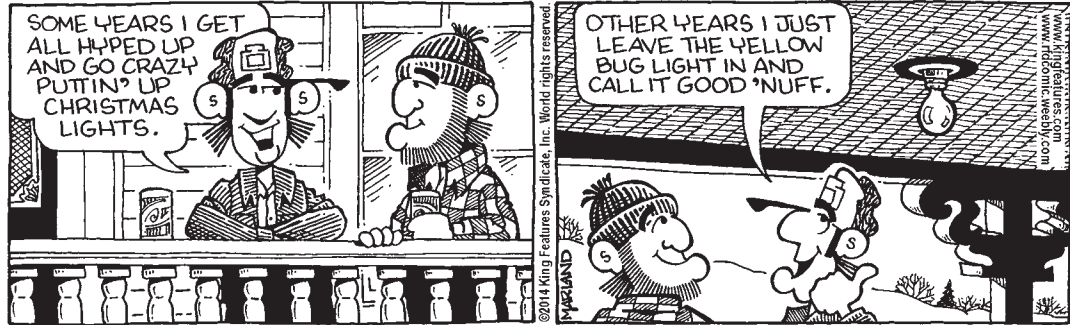


The Turkey Leg top three

Running enthusiasts in the area formed up Nov. 22 at The Turkey Leg, a 5K for charity, hosted by Rend Lake College's Recreational Center. College Rec Center Director Tyler O'Daniel explained the purpose of the event, "We wanted to introduce the community to all the services our Rec Center provides while doing something good for the area. The Turkey Leg was the first of many events and attractions we will be hosting at the center. We had some fun and got in some exercise on — what turned out to be — a really nice November morning. Most importantly, these runners helped us raise some money and donations we can use to support local charities." O'Daniel said officials plan to deliver proceeds and donations. Awards were given out to the top three finishers' Elliott Brinkmeyer of Centralia, Tony Wielt of Mount Vernon, and Annette Campbell of Mount Vernon. The event raised just under \$300 plus a stack of nonperishable food. FROM LEFT; runner-up Wielt, third-place runner Campbell and Brinkmeyer. (Nathan Wheeler / Clocktower Chronicle)

R.F.D.

by Mike Marland



Rend Lake College Clocktower Chronicle

Administration:
LuAnn Droege, Senior Editor, Centralia Sentinel
Nathan Wheeler, Editor, Rend Lake College

Advertising:
To place an advertisement, call 246-2000

Postal Information:
Published weekly on Thursdays by Centralia Press Ltd., 232 E. Broadway, Centralia, IL 62801-0627 (USPS 098-600) (ISSN: 1059-8162); periodical postage paid in Centralia; POSTMASTER: Address changes to the Centralia Sentinel, 232 E. Broadway, Centralia, IL 62801-0627

Single Copy Price:
\$20 for a one-year subscription; free on RLC campuses

Circulation:
Subscription and delivery information is available by calling 246-2000.

Dinner
continued from page 1

mentors to help him reach his goals.

"Life will throw you curveballs, and most of mine have been when I was young. Through it all, I knew I wanted my education and I wanted to be someone I thought was a good person," said Endicott. "I found both of those things at Rend Lake and the Foundation. Rend Lake College is a place I'm proud to be a part of and I've learned that I love learning. The Foundation didn't just give me a scholarship, they believed in me. I want to say thank you all very much for that."

As a non-traditional student, Upton shared her different experiences in life before coming to RLC, mainly the drastic changes her life made after the passing of her father-in-law and the recession in 2008. She said it was the Dr. Gary Sweeten Isaiah 61 Scholarship that helped push her toward becoming a full-time student in the Nursing Program.

"Never in my life did I think I'd be in the place I'm at today," said Upton. "Everything fell apart after my father-in-law passed away. We lost everything. I decided I wanted to go back to school to become an RN, but I had never been to college before, so imagine my surprise when I received a letter telling me I'd received a scholarship from Rend Lake College. I am so blessed. I now know it's never too late to achieve a dream God put in your heart. I've learned the most important things in life aren't things at all. As I often tell my daughter, 'it's okay to be

afraid, just do it afraid,' and that's what's kept me going."

The next step on the pathway of success leads to Alumnus of the Year Jim Mounier. The 1972 graduate is now the senior vice president at Merrill Lynch in Rockford, where he is a 26-year veteran. He was unable to attend the Annual Dinner due to a longstanding commitment elsewhere, but he accepted the award and offered his own words of advice to current and future students through a video.

"First, I want to thank Rend Lake College and the Foundation for this honor. I had a great time, and received a quality education at RLC," said Mounier. "I think Rend Lake is an excellent way to get involved in higher education. I know it saved me a lot of money and gave me time to mature before going to Illinois State University. I also know that scholarships are extremely important. The Foundation and its donors do a wonderful job giving back. To the students who may be struggling, I applaud you for not allowing anything or anyone to spoil your dreams."

The evening's focus then shifted to the fourth step, the Pathway to Success campaign. The summer project upgraded the front façade of the Allen Y. Baker Administration Building by renovating it to be more inviting and identifiable for students. The Foundation also matched each dollar raised to establish the largest endowment scholarship ever for future RLC students. Early into the project, Continental Tire the Americas (CTA) of Mt. Vernon became the lead contributor with a \$25,000 pledge.

Terry Wilkerson, RLC president, said, "We looked at what the college's needs are and decided to tackle the front entrance of the administration building with the 'Pathway to Success' campaign. Every one of our students comes through those doors at some point, whether it's for financial aid or to sign up for classes. I commend the Foundation Board for stepping up to the opportunity and making the campus really stand out. The campaign has also become our largest Foundation scholarship endowment ever. It goes to show we

have a lot of great supporters and partners, and Continental Tire continues to be at the top of that list."

Wilkerson also awarded Benny Harmse, vice president of manufacturing at CTA, the President's Award for his efforts in helping with the lead donation for the Pathway to Success campaign, and for going "above and beyond." Harmse is a current member of the RLC Foundation Board.

"We have an excellent team of directors who are my biggest allies and greatest supporters, and Benny is a perfect example of that. When I showed Benny there was a need, he stepped up right away. Our community has a great ally in Benny Harmse and Continental Tire the Americas," added Bullard.

The final stop on the journey through education came back to Marjorie Farrar and the RLCFCC. Farrar's son Fletcher spoke on her behalf and made a big announcement.

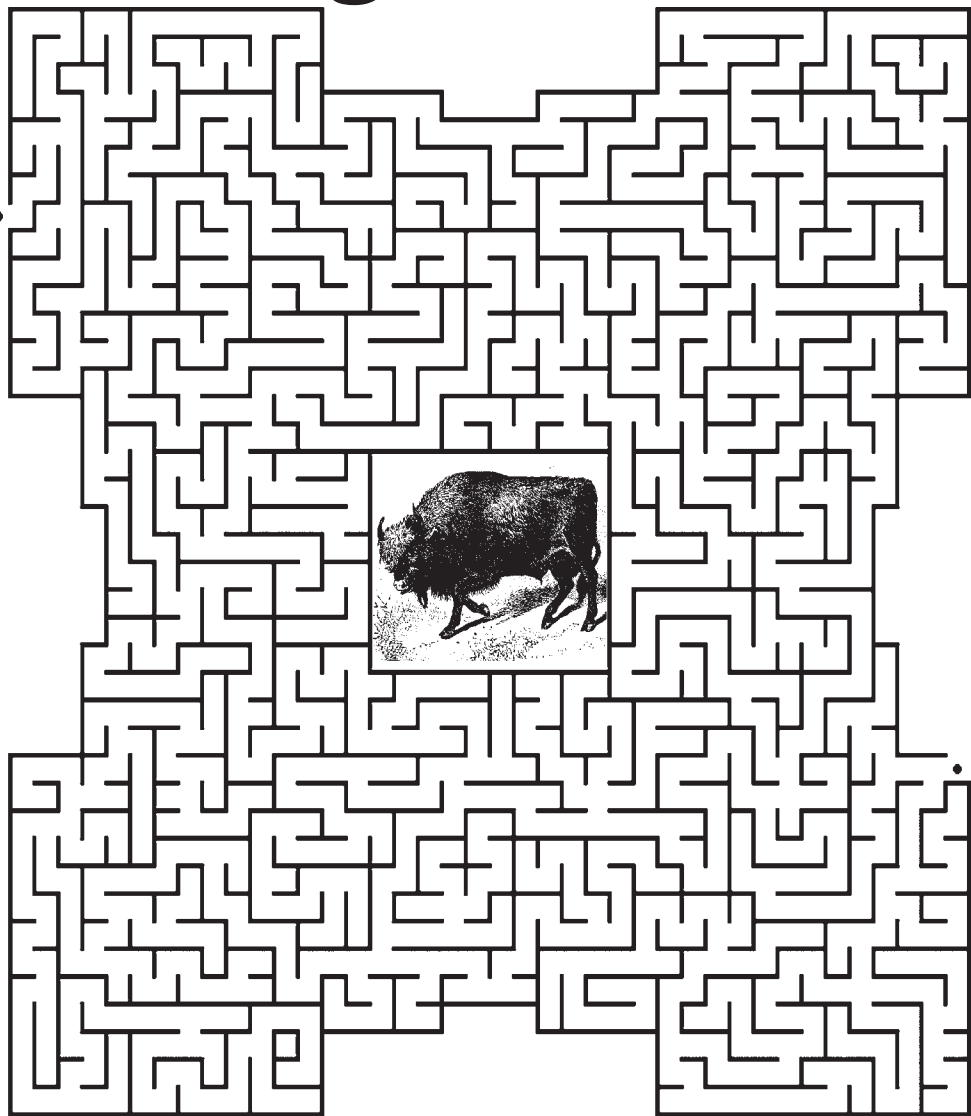
"My mother wanted to thank you all for this honor and recognition tonight. She's always had a special love for the RLC Foundation Children's Center and it always brings a smile to her face when she talks about it," said Farrar. "I'm pleased to announce she will be giving a \$100,000 donation to the Children's Center to continue helping the center as it expands and grows to meet the needs of the college and the community."

"Marjorie is with us in heart and in spirit every day on campus," said Bullard. "She makes this whole pathway to success possible through her financial support of our littlest RLC Warriors."

The Annual Dinner was sponsored by Hamilton County Telephone and Peoples National Bank. The invocation was done by Eric Black, RLC Board of Trustees chairman. There was also a performance by the RLC Concert Choir and a vocal performance by RLC students Sierra Harrell (Opdyke), accompanied by Dennis Southerd (Mt. Vernon).

For more information about the RLC Foundation, call (618) 437-5321, Ext. 1214 or visit online at www.rlc.edu/foundation.

Megamaze



Solution to Megamaze puzzle printed on page 4.

HOLIDAY SALE

GOING ON FROM
DEC. 8TH - DEC. 13TH
20% OFF STOREWIDE
Excludes Saddles, feed & items already on sale

- Straw Hats **50% OFF** • Muck Boots **50% OFF**
- Women's Jeans **Buy 2 Get 1 FREE**
- Select Mens, Womens & Kids Shirts **75% OFF**
- Headstalls, Breast Collars, Reigns **Buy 2 Get 1 FREE**
- Patriotic Horse Pads **Only \$29.95**
- Select Used Saddles **Only \$99.95**
- Horse Winter Blankets **\$20 OFF**

DOUBLE "D" WESTERN WEAR

Only 3 1/2 miles East of Salem • **618-458-2791**
www.westernsaddlesrus.com • Hours: Mon-Sat 9am-6pm



One Week Only!

Strange
continued from page 1

her Malibu, California, home.

• The next time you see a group of cats together, you can call them a "clowder." If the cats are young ones, though, the appropriate

term for a group of kittens is a "kindle."

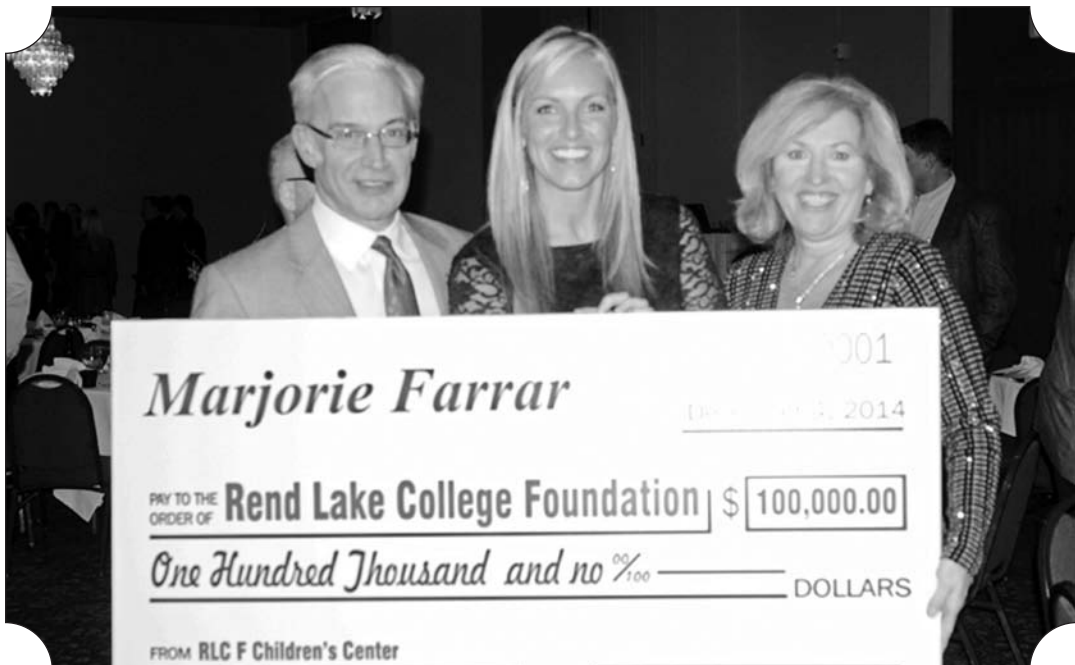
• Those who study such things say that cockroaches can run as fast as 3 mph.

Thought for the Day: "A man can't be too careful in the choice of his enemies."
— Oscar Wilde



Reglands share their experiences

Chase, LEFT, and Nathan, RIGHT, Ragland of Sesser spoke about their education in the RLCF Children's Center during the RLC Foundation Annual Dinner. They are the sons of Lori Ragland, RLC Dean of Community and Corporate Education. The Raglands represent the first step in the "pathway to success" through education at RLC. (ReAnne Palmer / RLC Public Information)



Marjorie Farrar donation

Fletcher Farrar, LEFT, son of Marjorie Farrar, presents a donation on behalf of his mother to RLCF CEO Shawna Bullard, CENTER, and former RLCF CEO Pat Kern, RIGHT, during the RLC Foundation Annual Dinner. The \$100,000 donation will go toward expanding on the current RLC Foundation Children's Center building, located on the west end of the Ina campus. Marjorie Farrar was the initial lead donor for the Children's Center project in 1995 with a \$100,000 donation. (ReAnne Palmer / RLC Public Information)



MUSIC

Top 10 — The week's most popular current songs and albums across all genres. (www.billboard.com)

SONGS (WEEK OF DEC.12)

- (1) "Blank Space" - Taylor Swift
- (2) "All About That Bass" - Meghan Trainor
- (3) "Take Me To Church" - Hozier
- (4) "Shake It Off" - Taylor Swift
- (5) "Animals" - Maroon 5, Jessie J & Nicki Minaj
- (6) "The Heart Wants What It Wants" - Selena Gomez
- (7) "I'm Not The Only One" - Sam Smith
- (8) "Uptown Funk" - Mark Ronson
- (9) "Habits" - Tove Lo
- (10) "Love Me Harder" - Ariana Grande

ALBUMS (WEEK OF DEC. 12)

- (1) "1989" - Taylor Swift
- (2) "That's Christmas To Me" - Pentatonix
- (3) "ShadyXV" - Various Artists
- (4) "Four" - One Direction
- (5) "In The Lonely Hour" - Sam Smith

- (6) "Hood Billionaire" - Rick Ross
- (7) "My Everything" - Ariana Grande
- (8) "Beyonce More Only" - Beyonce
- (9) "Frozen" - Soundtrack
- (10) "V" - Maroon 5

NEW ALBUMS THIS WEEK (WEEK OF DEC. 12)

- "Do They Know Christmas?" - Band Aid 30
- "The PinkPrint" - Nicki Minaj
- "III" - Take That
- "Sucker" - Charli XCX
- "La Vella" - The City On Film

Movies

FOR RENT (DEC. 9)

- When the Game Stands Tall, Dolphin Tale 2, I Origins, Guardians of the Galaxy, Frank

NEW IN THEATERS (DEC. 12)

- Inherent Vice (R) - comedy/crime
- Exodus: Gods and Kings (PG-13) - action/adventure/drama
- Top Five (R) - comedy
- Free The Nipple (R) - comedy



Sharing his memories

Austin Crouse, RIGHT, a fifth grader from Salem, spoke about his time as a student in the RLCF Children's Center. Crouse represented the first step in the "pathway to success" through education at RLC. He is the son of RLC Pre-School Head Teacher Rene Crouse. Also pictured is Brandon Bullard, LEFT, and RLC Foundation CEO Shawna Bullard, CENTER. (ReAnne Palmer / RLC Public Information)



Continental Tire presented award for being lead donors

Employees from Continental Tire the Americas (CTA) accepted a plaque from RLC President Terry Wilkerson, SECOND FROM LEFT, and RLCF CEO Shawna Bullard, RIGHT, for being the lead donors on the "Pathway to Success" campaign with a \$25,000 donation. Pictured is, FROM LEFT, Ed Code, CTA commercial vehicle tire product industrialization manager; Wilkerson; Jonathan McCoy, CTA human resources supervisor; Barbara Hoppa, CTA controller; Heather Bicanich, CTA administrative assistant; Josh Polk, CTA human resources supervisor; Benny Harmse, CTA vice president of manufacturing; and Bullard. (ReAnne Palmer / RLC Public Information)

Amy Center 50/50 at RLC a win-win!

The Amy Center 50/50 fundraiser at RLC was a huge success this year, raising more than \$1,750 for the cause. The winner this year is Karen Heise. English Professor Peggy Davis thanked those who bought and sold raffle tick-

ets, and helped spread the word, adding, "especially Hillary Halsey and her FYE classes, Buster and Jessica for stepping in and helping with all the tasks involved in the project, and to the Creative Writing Club for being the driving force behind this yearly fundraiser."

CENTRALIA COIN, STAMP, ETC.
 Corner of Broadway & Cherry
 533-4200 • www.centraliacoin.com

Great Holiday Gift Ideas

- Proof Sets
- Silver Eagles
- Gold Eagles
- 1 oz. Silver Bars
- 10 oz. Silver Bars
- Canadian Polar Bars
- Key Coins
- Rare Paper Money
- Much More

FEATURED ITEM... Silver Christmas Coins

TOP PRICES PAID

GIFTS OF VALUE!!



IMI Scholarship recipient

Tyler Ragan, RIGHT, of McLeansboro was awarded an Illinois Mining Institute (IMI) \$250 scholarship at RLC's Coal Mining Training Center. Ragan is a sophomore in RLC's Mining Technology program. The 20-year-old said he plans to work in the mines either locally or out-of-state after his May 2015 graduation. Also pictured is RLC Mining Technology Instructor Charles Wingo, LEFT. (ReAnne Palmer / RLC Public Information)

ELFIN' LIGHTS
 HOLIDAY DECORATING FOR ALL YOUR EXTERIOR HOLIDAY LIGHTING NEEDS.

INSTALLATION, REPAIR, REMOVAL
 "Why lose the fights, call Elfin' lights"

402-515-5469

CLEARY BUILDING CORP. Winter Build Sale
 Building relationships in communities throughout the U.S. for more than 36 Years!

BUILDING SPECIALS!
 30'x45'x13' • \$13,584
 42'x72'x15' • \$23,302
 60'x99'x17' • \$46,372

CALL US FOR A FREE CONSULTATION!
 Olney, IL 618-395-4670
 Breese, IL 618-526-7612

FEATURING: **Cleary FABRAL**

ClearyBuilding.com • 800-373-5550

COUPON

PIZZA MAN

Fried Chicken Salad \$1.00 OFF

Your Hometown Pizza Man
 (A Salem Tradition) 1413 W. Main Salem 548-5331

Not valid with any other discount offer. Expires 12/18/14

WE USE ONLY FRESH INGREDIENTS

Wilson & Wilson Monument Co., Inc.

MAUSOLEUMS, MONUMENTS, MARKERS, GRANITE SIGNS & BENCHES, CEMETERY LETTERING, PET MARKERS

406 W. Poplar Odin, Illinois 62870
 P.O. Box 247 1-800-966-6488 (618)775-6488
 Web: wilsonandwilsonmonuments.com
 E-mail: wwmnco@gmail.com

Give a Holiday Gift That Doesn't End When the Batteries Run Out.

Why not start a new holiday tradition? Make this the time of year that you help save for a child's college education.

Edward Jones can work with you to develop a strategy to save for college. One option is a 529 college savings plan, where today's gift can have tax benefits for you, family members and the child.*

*Contributions to a 529 plan may be eligible for a state tax deduction or credit in certain states for those residents.

To make your college savings gift in time for the holidays, call or visit today.

Bill Dwyer, AAMS® Financial Advisor
 521 West Main Salem, IL 62881 618-548-6555

Darren L. Dwyer Financial Advisor
 521 West Main Salem, IL 62881 618-548-6555

Edward Jones
 MAKING SENSE OF INVESTING



ATHLETICS

SECTION

Warriors defeated by Jaguars in Danville

BY REANNE PALMER
RLC SPORTS INFORMATION

DANVILLE, Ill. (Dec. 2, 2014) — The Rend Lake College Warriors lost to the Danville Area Community College (DACC) Jaguars 66-72 last night in Danville. They are now 4-5 for the season.

RLC held the lead at half-time of 35-28, but was outscored by DACC in the second half. Lead scorers included Kourtlandt Martin (Evansville, Ind.) with 21 points, Dedric Byrd (Champaign) with 15 points, and Robert Sawyer (Louisville, Ky.) and Eric Williams (Memphis, Tenn.) with nine points each. Martin added three rebounds and one

steal to his night. Byrd had another five assists and four rebounds. Sawyer added seven rebounds and three blocks, and Williams had nine rebounds and one assist.

Other top performers included Perry Fairrow (Evansville, Ind.) with five points, two rebounds, and one assist; Ryan Otis (Houston, Texas) with four points and six rebounds; and Armani Towns (Columbus, Ohio) with three points, six rebounds, one assist, and two blocks.

The Warriors will play Southeastern tomorrow night at 7:30 p.m. in Harrisburg. They will wrap up 2014 with home games against Kaskaskia College



Kourtlandt Martin (Evansville) led the Warriors in scoring with 21 points.

Saturday and Olney Central College on Dec. 11. For all things athletic at The Lake, visit www.rlc.edu/warriors.

Lady Warriors suffer loss to Danville Area Community College

BY REANNE PALMER
RLC SPORTS INFORMATION

DANVILLE, Ill. (Dec. 2, 2014) — The Rend Lake College Lady Warriors fell 54-68 to Danville Area Community College in



Valencia Chandler (Joliet) logged a double-double 11 points and 11 boards in the losing effort.

Danville. The loss put RLC at 2-4 for the season.

Three Lady Warriors scored double-digits against the Lady Jaguars: Valencia Chandler (Joliet) with a double-double of 11 points and 11 rebounds, plus one steal for the night; and Savannah Enlow (Corydon, Ind.) and Brianna Hawkins (Louisville, Ky.) with 10 points each. Hawkins added another four assists, four steals, and one block. Enlow also added one assist and one block.

Other top performers for RLC included Jasmine Washington (Evansville, Ind.) with seven points, six rebounds, two assists, two

steals, and one block; Jordan Bruenton (Cincinnati, Ohio) with five points, nine rebounds, and one steal; Mykhaela Tolds (Pearland, Texas) with four points, two rebounds, and one steal; Ieisha Sanders (Mt. Vernon) with four points and three rebounds; and Jenae Rowe (Joliet) with three points.

The Lady Warriors fell to 2-6 with losses of 61-63 to Southeastern Illinois in Harrisburg and 61-64 to Kaskaskia on Saturday. RLC will try to correct the skid when it hosts Olney Central at 5 p.m. tonight. For all things athletic at The Lake, visit www.rlc.edu/warriors.

Home Accents

Categories Listed
DOES NOT INCLUDE SEASONAL DEPARTMENT

50% OFF

DOES NOT INCLUDE CANDLE FX™, TEALIGHTS, VOTIVES, VALUE PACKS OR FRAGRANCE WAX & OILS

- Wood Decor Sale
- Metal Decor Sale
- Decorative Vegetable- & Fruit-Filled Bottles
- Mirrors WALL & TABLE
- Ceramic Decor Sale
- Decorative Crosses • Clocks WALL & TABLE
- Men's Resin & Ceramic Decor WALL & TABLE
- Framed Art, Canvas Art & Adhesive Vinyl Wall Art
- Polyresin & Pottery Decor Sale
- Glass Decor Sale
- Men's Metal & Wood Decor WALL & TABLE
- Knobs, Drawer Pulls & Handles WALL & TABLE

CHRISTMAS ITEMS ARE NOT INCLUDED IN HOME ACCENTS SALE

<h3>Christmas Party & Gift Wrapping Supplies</h3> <h2>50% OFF</h2> <ul style="list-style-type: none"> • Gift Bags, Sacks & Boxes • Gift Wrap, Tags & Boxed Cards • Paper Plates & Napkins • Bows & Trims • Cookie & Candy Tins & More 	<h3>Christmas Decor</h3> <h2>50% OFF</h2> <p>DOES NOT INCLUDE FABRIC, NEEDLE ART, CANDY, LIGHT SETS, LIGHT ACCESSORIES, SCOTCH TAPE OR SCOTCH PRODUCTS</p>	<h3>Christmas Trees</h3> <p>12 in - 12 ft</p> <h2>50% OFF</h2>
<h3>Christmas Floral</h3> <ul style="list-style-type: none"> • Arrangements • Bushes • Wreaths • Garlands • Swags • Stems • Picks • Ribbon <h2>50% OFF</h2> <p>DOES NOT INCLUDE CUSTOM DESIGNS</p>	<h3>Christmas Crafts</h3> <p>ALL ITEMS LABELED MAKE IT CHRISTMAS: CHRISTMAS CRAFTS, JESSE JAMES, ROBERT STANLEY™ CRAFT COLLECTIONS & CHRISTMAS BY BEAD TREASURES™</p> <h2>50% OFF</h2>	<h3>Furniture</h3> <p>Always</p> <h2>30% OFF</h2> <p>THE MARKED PRICE*</p>
<h3>Stem Naturals</h3> <p>CHOSE FROM BOUTIQUES, STICKS, POOLS, GRAINS, FILLERS & GRASSES DOES NOT INCLUDE FEATHERS</p> <h2>50% OFF</h2>	<h3>Floral</h3> <p>Most Categories Listed</p> <p>DOES NOT INCLUDE SEASONAL DEPARTMENT OR ITEMS LABELED "FLORAL ACCENTS"</p> <h2>50% OFF</h2>	<h3>Hobbies</h3> <p>Categories Listed</p> <ul style="list-style-type: none"> • Estes® Rockets • Plastic Model Kits • Science Kits & Telescopes • Train Sets <p>ITEMS PRICED \$9.99 & UP</p>
<h3>Potted Trees & Floor Plants</h3> <p>4 ft - 8 ft</p> <p>Always</p> <h2>30% OFF</h2> <p>THE MARKED PRICE*</p>	<h3>Flowering & Greenery Bushes</h3> <p>DOES NOT INCLUDE POTTED TREES</p>	<h3>Needle Art</h3> <ul style="list-style-type: none"> • Yarn Bee® Effervesce™ 4.49 4 oz • Soft Secret™ 3.33 3 & 6 oz • Baby Bee™ Baby Yarns 4.22 3 & 4 oz

<h3>Framing</h3> <p>Most Categories Listed</p> <h2>50% OFF</h2> <p>ALWAYS 50% OFF THE MARKED PRICE* CHOOSE FROM OUR ENTIRE SELECTION OF BASIC & FASHION TABLETOP FRAMES INCLUDES WOODEN PHOTO STORAGE</p>	<h3>Custom Frames</h3> <p>ALWAYS 50% OFF THE MARKED PRICE* APPLIES TO FRAME ONLY</p>	<h3>Leather & Leather Kits</h3> <p>ITEMS PRICED \$4.99 & UP</p>	<h3>Crafting</h3> <p>Categories Listed</p> <h2>30% OFF</h2>
<h3>Photo Frames</h3> <p>ALWAYS 50% OFF THE MARKED PRICE* CHOOSE FROM OUR ENTIRE SELECTION OF BASIC & FASHION TABLETOP FRAMES INCLUDES WOODEN PHOTO STORAGE</p>	<h3>artbeats Posters & Matted Prints</h3> <h2>66% OFF</h2> <p>WHILE SUPPLIES LAST</p>	<h3>All Clays</h3> <p>CHOSE FROM MODELING, OVEN-BAKE, AIR-DRY & JEWELRY CLAY</p>	<h3>T-Shirts</h3> <p>ALWAYS 30% OFF THE MARKED PRICE* INCLUDES YOUTH & ADULT T-SHIRTS & TANK TOPS & INFANT & TODDLER T-SHIRTS, CREEPERS & DRESSES</p>
<h3>Ready-Made Open Frames</h3>	<h3>Shadow Boxes, Display Cases & Flag Cases</h3>	<h3>EVA Foam Packaged Shapes & Packaged Sheets</h3> <p>ITEMS PRICED \$4.99 & UP</p>	<h3>Chalkboards, Corkboards & Dry-Erase Boards</h3>
<h3>Rubber Stamps & Sets</h3> <p>INCLUDES CARMA & CLING STAMPS CHOOSE FROM OVER 900 STYLES</p> <h2>40% OFF</h2>	<h3>Papercrafting</h3> <ul style="list-style-type: none"> • Stickers & 3-D Stickers by the Paper Studio® • Scrapbook Ribbon & Fibers by the Paper Studio® 	<h3>Poster Board</h3> <p>4/100 WHITE</p> <p>2/100 COLORED & FLUORESCENT</p> <p>DOES NOT INCLUDE GOLD OR SILVER</p>	<h3>Art Supplies</h3> <ul style="list-style-type: none"> • Master's Touch® Art Canvas 30% OFF • Artist Sets ART, WATERCOLOR, ACRYLIC & OIL 30% OFF
<h3>Punches & Punch Sets</h3> <h2>40% OFF</h2>	<h3>Scrapbook Papers</h3> <p>Packs, Pads & Single Sheets</p> <p>CHOOSE FROM OVER 1300 STYLES</p> <p>DOES NOT INCLUDE PAGE KITS OR ART DEPARTMENT</p> <h2>50% OFF</h2>	<h3>Master's Touch® Oil Paint</h3> <p>4.87 50 ml 12.87 200 ml</p>	<h3>Chalkboards, Corkboards & Dry-Erase Boards</h3>

* DISCOUNTS PROVIDED EVERY DAY; MARKED PRICES REFLECT COMPARABLE PRICES OFFERED BY OTHER SELLERS FOR SIMILAR PRODUCTS.

HOBBY LOBBY

PRICES GOOD IN STORES AND ONLINE THROUGH DECEMBER 13, 2014
SOME ADVERTISED ITEMS NOT AVAILABLE ONLINE. SALES SUBJECT TO SUPPLY IN STOCK. SELECTION AND QUANTITIES VARY BY STORE. AD DOES NOT APPLY TO PRE-REDUCED ITEMS.

STORE HOURS:
9 A.M. - 8 P.M.
CLOSED SUNDAY

COUPON FOR IN-STORE OR ONLINE USE

40% OFF

One Item at Regular Price

Valid through December 13, 2014

Code: 8394

Offer good for one item at regular price only. Must present coupon at time of purchase. Offer is not valid with any other coupon, discount or previous purchase. Excludes CIRCUT products, Tim Holz's Vagabond® Machine, Silhouette Cameo® Machine, candy, helium tanks, gift cards, custom orders, special orders, labor, rentals or class fees. A single cut of fabric or trim "by the yard" equals one item. Online fabric & trim discount is limited to 10 yards, single cut. Cash Value: 1/10¢.

• MOUNT VERNON: Broadway & South 42nd Street in the Times Square Mall (618) 242-2259

VISIT OUR SITE — HOBBYLOBBY.COM

Solution to page 2 Megamaze puzzle.

Total Family Dental Care

AHMAD SAMADZAI, DDS

1704 Jefferson Ave. • Mt. Vernon, IL
244-2440 ext. 1

- Same Day Crowns • Fillings
- Dentures • Implants • Partial
- Gum Therapy Treatment • Bridges
- Cleanings • ZOOM! Whitening
- Extractions • Sedation Dentistry

New Patients Same Day Exam — Most Insurance Plans Accepted
No Interest Financing Available — Emergency Walk-Ins Welcome
Hours: Mon-Wed-Thurs 8am-6pm; Tues 10am-7pm, Closed Fridays
www.mtdentalcare.com

Twin Willows NURSING CENTER

- Medicare approved rehabilitation services provided by "Rehab Care" a provider of physical, occupational and speech therapy in forty-three states.
- Locally owned and operated.
- Public Health annual inspection for 3-2007 cites no deficiencies — public health's highest compliment.
- When you've been in the hospital and need therapy to get back home call 548-0542.

Come Live With Us,
Phone 548-0542

Route 37 North • Salem

Todd Woodruff
Administrator Since 1976

"Ask me about the AARP® Auto & Home Insurance Program from The Hartford."

Now available in your area!

SHERRI LUTZ
THE INSURANCE SHOPPE

This auto and home insurance is designed exclusively for AARP members — and is now available through your local Hartford independent agent!
Call Today for your FREE, no-obligation quote:

618-548-1053

SHERRI LUTZ
THE INSURANCE SHOPPE
1141 S. BROADWAY
SALEM, IL 62881

AARP Auto & Home Insurance Program