



Winter is here

Rend Lake College students were bundled up this week for the dropping temperatures. FROM LEFT are; Alexandra Warner, a 19-year-old Occupational Therapy Assistant major; Matthew Knight, a 19-year-old Industrial Engineering major, and Josh Schuster, a 20-year-old undecided major. All are from McLeansboro. (Taylor Blankenship/ Clocktower Chronicle Staff Photographer)

Economic Impact Study highlights RLC's role in local economy

BY REANNE PALMER
 RLC PUBLIC INFORMATION

Odds are you or someone you know has been affected by Rend Lake College's economic impact in the last decade, whether that be directly from graduating with a degree or certificate and a subsequent increase in wages, or indirectly through a number of capital projects.

A new "Economic Impact of Rend Lake College" (EIS) report investigated the many economic contributions RLC makes in the region, in what the study calls "the least measured and understood" strength of the college. The report was prepared by the Center for Governmental Stud-

ies at Northern Illinois University (NIU) in partnership with the Illinois Community College Board (ICCB) and the Illinois Department of Employment Security (IDES).

The source of community college student employment and earnings data is the Unemployment Insurance (UI) wage record data reported by Illinois employers for each of their employees. UI data are collected on a quarterly basis by the IDES. Using these data, the EIS examined student enrollment and completion data over a 12-year period and matched earnings data with students who graduated or otherwise left the college for two, full, consecutive semesters.

Of RLC's strengths, the EIS states that the college, "adds skills for the local workforce; boosts the competitiveness of area businesses; graduates individuals who generate millions of dollars in local, state, and federal tax revenues; and increases earnings for workers who have graduated."

RLC President Terry Wilkerson knows the importance of the college to the local communities and sees the positive effects it has on a day-to-day basis.

"The faculty and the staff at Rend Lake College know the significance of being a community college that continues to have a huge impact on local people and businesses," said Wilkerson. "We know that we

can go to almost any business in the area and find an RLC grad or someone who has attended to improve their existing skills. We're training our friends and neighbors here, and this Economic Impact Study is affirmation that we're doing something right for them."

Among the biggest benefits of RLC are the opportunities it opens for students who attend and graduate. The EIS states that a 25-year-old program graduate of RLC can expect a total lifetime earnings gain of \$602,000 — a 46 percent increase over those not completing a community college program.

Additionally, students who completed their education at

RLC in 2011 have seen a \$5,644 increase in earnings over their pre-enrollment wages.

"It's proven that a community college education is both an investment and a savings for those who take advantage of our services," said Wilkerson. "By setting aside time to complete a program or certificate at RLC, students are foregoing earnings, but the rate of return on that investment is well worth it."

In the year following completion, 81 percent of students who graduated in 2011 were employed in Illinois, which is slightly higher than the

Economy continues on page 3



MVTHS students, FROM RIGHT, Daiandre Gladney, Keagan Myers, and Brandon Ellis, get a close look at Rend Lake College's CNC Machine during their visit. Matt Jackson, LEFT, Illinois Green Economy Network Curriculum Coordinator at RLC, showed the trio several pieces of equipment RLC students use in Applied Science and Technology programs. (ReAnne Palmer / RLC Public Information)

STRIVE high school students visit campus, shadow RLC faculty

Several students from the STRIVE program through Mt. Vernon Township High School (MVTHS) visited Rend Lake College's Ina campus and Studio RLC cosmetology program in Mt. Vernon this

morning as a part of a job shadowing program.

The STRIVE Program, sponsored by the two Rotary Clubs in Mt. Vernon and the RLC Foundation, is

STRIVE continues on page 5

Why all the fuss over 'Black Friday?'

BY SHELBY PATTERSON
 CLOCKTOWER CHRONICLE STAFFWRITER

With the Thanksgiving holiday right around the corner, many people are setting their sights upon the day after the feast — Black Friday.

November is filled with thoughts of gratitude as people celebrate Thanksgiving at the end of the month. Turkeys are carved, feasts are prepared, the Macy's Thanksgiving Day Parade usually plays on the TV in the background...all fond memories from childhoods past.

In recent years, the craze for Black Friday has steadily gotten more extreme. Stores have begun opening earlier and earlier to slash their competition and serve their customers. A lot of retail chain stores, like Walmart, have now begun their

Black Friday deals on Thanksgiving night — cutting into the holiday time of their employees...all for a good bargain. This year, the retail chain is advertising a five-day Black Friday sales event, with doors opening at 6 p.m. Thanksgiving night.

The term "Black Friday" was first coined in the 1960s — to mark the kick-off of the Christmas shopping season. Since then, the popularity of the day has grown. Police in Philadelphia came up with the term after complaining about the busy streets, bustling with motorists and pedestrians. "Black" references stores moving from the "red" to "black" — way back when accounting records were recorded by hand. Red ink symbolized

'Black Friday' continues on page 2

Two Christmas-themed classes set for December 2

BY REANNE PALMER
 RLC PUBLIC INFORMATION

With the holiday season just around the corner, Rend Lake College is offering two Christmas-themed classes to get you in the spirit.

The first class will help you create the perfect gift or treat to take to a holiday party. Christmas Cookies & Candies will meet from 5:30 – 8 p.m., Tuesday, Dec. 2 in the Student Center, Room 103 on the main campus in Ina. Instructor Beth Mandrell will teach techniques to make quick, easy, and delicious Christmas cookies

and candies for \$12 a person, plus a \$10 supply fee.

The second class is perfect for a mommy and me evening to create matching Christmas Theme Hair Bow and TuTus. The session will be taught by instructor Erin Gale from 6 – 8 p.m., Tuesday, Dec. 2 at the Pinkneyville Murphy-Wall Campus, Room 113. The class costs \$10, plus a \$22 supply fee.

For more information about the classes, contact Stephanie Smith in the Community and Corporate Education Department at (618) 437-5321, Ext. 1714 or smithst@rlc.edu.

INSIDE:

What to listen to and what's playing	2
Scholarship photos	3 & 5
Athletics	4
Job listings at RLC	5
Classifieds	6



MUSIC & MOVIES

MUSIC

Top 10 — The week's most popular current songs and albums across all genres. (www.billboard.com)

SONGS (WEEK OF NOV.22)

- (1) "Shake It Off" - Taylor Swift
(2) "All About That Bass" - Meghan Trainor
(3) "Animals" - Maroon 5
(4) "Habits Stay High" - Tove Lo
(5) "Bang Bang" - Ariana Grande, Jessie J & Nicki Minaj
(6) "Hot Boy" - Bobby Schmurda
(7) "Love Me Harder" - Ariana Grande
(8) "Take Me To Church" - Hozier
(9) "Black Widow" - Iggy Azalea
(10) "Don't Tell 'Em" - Jeremih featuring YG

ALBUMS (WEEK OF NOV 22ND)

- (1) "1989" - Taylor Swift
(2) "Now That's What I Call Music 52" - Various Artists
(3) "It's The Girls" - Bette Midler
(4) "Old Boots New Dirt" - Jason Aldean
(5) "Motion" - Calvin Harris
(6) "Anything Goes" - Florida Georgia Line
(7) "Partners" - Barbra Streisand
(8) "In The Lonely Hour" - Sam Smith
(9) "Just As I Am" - Brantley Gilbert
(10) "Montevallyo" - Sam Hunt

NEW ALBUMS THIS WEEK (NOV. 21-26)

- Iggy Azalea "Reclassified"
Megafortress "Believer"
Northumbria "Bring Down The Sky"
Circa Survive "Descensus"
Copeland "Ixora"
David Guetta "Listen"

- Faith Evans "Incomparable"
Pitbull "Globalization"
Rick Ross "Hood Billionaire"
Simple Minds "Big Music"
Soundgarden "Echo Of Miles: Scattered Tracks Across The Path"
Tokio Hotel "Kings Of Suburbia"
Andy Stott "Faith In Strangers"
Bella Novela "Telemetry"
Kevin Hearn "Days In Frames"
Nicholas Krgovich "On Cahuenga"
Snowday "As We Travel"

MOVIES

FOR RENT (NOV. 18)

20,000 Days on Earth, 22 Jump Street, Alive Inside, And So It Goes, Automata, Boy Meets Girl, Come Back to the 5 & Dime Jimmy Dean, Jimmy Dean, Frank Miller's Sin City: A Dame to Kill For, Housebound, If I Stay, Into the Storm, It Happened One Night, King of the Hill: The Complete Seventh and Eighth Seasons, Masterpiece: Worricker - Salting the Battlefield, Masterpiece: Worricker - Turks & Caicos, Metallica: Some Kind of Monster, Moontrap, Ragnarok, Reclaim, Robot Chicken: Christmas Specials, The Wind Rises

NEW IN THEATERS (NOV. 21)

- The Hunger Games: Mockingjay Part 1 (R) - adventure/sci-fi
The Theory of Everything (PG-13) - biography/drama/romance
Happy Valley (NR) - documentary
The Sleepwalker (NR) - drama
V/H/S: Viral (R) - horror
Extraterrestrial(R) - horror/sci-fi



Greg Hollmann, Associate Professor of Political Science, was recently named Rend Lake College's Employee of the Month for November.

Rend Lake College Clocktower Chronicle

Administration: LuAnn Droege, Senior Editor, Centralia Sentinel; Nathan Wheeler, Editor, Rend Lake College

Advertising: To place an advertisement, call 246-2000

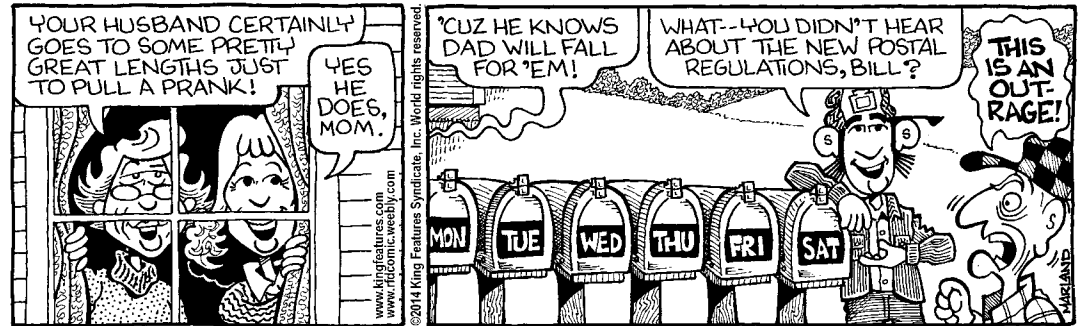
Postal Information: Published weekly on Thursdays by Centralia Press Ltd., 232 E. Broadway, Centralia, IL 62801-0627

Single Copy Price: \$20 for a one-year subscription; free on RLC campuses

Circulation: Subscription and delivery information is available by calling 246-2000.

by Mike Marland

R.F.D.



'Black Friday' ... continued from page 1

loss and black represented profit. Since the Macy's Thanksgiving Day Parade kicked off in 1924, the day after Thanksgiving has become an unofficial holiday as the start to a busy and bustling holiday shopping season.

ping season. It has become so popular because retailers began to realize that they could lure many shoppers into their stores with one-day-only specials and slashed prices. The most sought-after items tend to be electronics and toys.

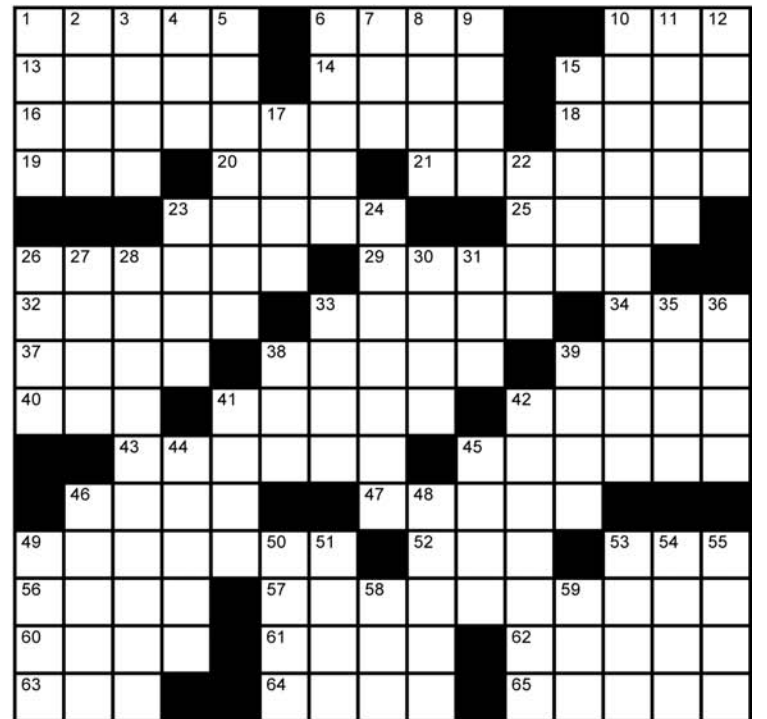
As Thanksgiving approaches, many newspapers and websites will be chocked full of Black Friday ads, hoping to entice customers to check out their deals.

As we recognize this time to be thankful for all of the blessings in our lives, don't let the excitement of great deals take away from what this time and holiday is truly about.

Crossword

Across

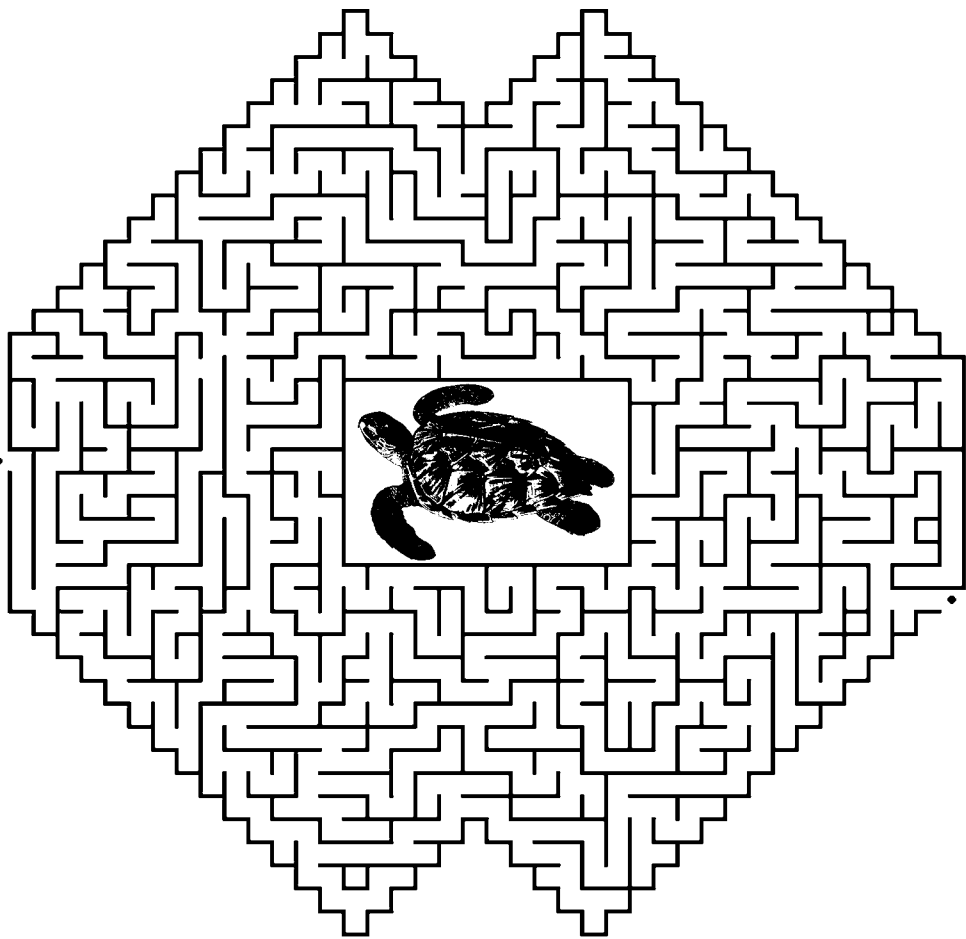
- 1 Mugged for the camera
6 "Now!"
10 Jelly's cousin
13 Excuse
14 Chorus syllables
15 Healing agent
16 Where Oscar the Grouch lives
18 "Come right ___!"
19 Peeper
20 Dog's warning
21 Put one on top of the other
23 Use a pen
25 Lays down the lawn
26 "Rah rah!"
29 Julius ___
32 Morning waker-upper
33 Not mincing words
34 Picasso pieces
37 Doing nothing
38 Uninteresting
39 ___ Pea (Popeye's kid)
40 Inquire
41 Apples and pears
42 Astronaut John
43 Person who can't look away
45 Dudley and Mandy
46 Celebrity
47 Fashionable grain
49 "Seriously?!"
52 "What else?!"
53 Not hers
56 "___ first you don't succeed..."
57 "Good riddance to ___!"
60 Scottish girl
61 Give off



- 62 Supermarket section
63 Cigar stuff
64 Woman
65 Valentine's Day flowers
10 Where random items are tossed
11 One astrological sign
12 Fix
15 Hot chocolate
17 Not very cheerful
22 Abbr. in job titles
23 Used to be
24 French desserts
26 Earth goddess
27 Former GM make, for short
28 Insults one's opponent
30 Uncle's wife
31 Finish
33 Feeling sad
35 Actress Russo
36 Some bills
38 "It's cold!"
39 ___ machines
41 Cab money
42 Valuable brick
44 Some pastries
45 Waiter's item
46 Couches
48 Birthday celebration
49 Sneakers brand
50 Cain's brother
51 Dalai ___
53 Snake or cat sound
54 Small piece of land in the water
55 "___ the One"
58 Performed
59 Prefix with engineering

Solution to Crossword puzzle printed on page 5.

Megamaze



Solution to Megamaze puzzle printed on page 5.

Christmas At Our Place

"Christmas Comes To Detroit Louie"

Presented by The Apostolic Church of Salem

Dinner & Play

(Turkey, Taters & The Fixins)



Get 'cho self to the gift shop e'ry night b'fo the show!

Friday, December 12 at 7 pm
Saturday, December 13 at 5 pm
(Pre-show 30 minutes before each night)

Tickets

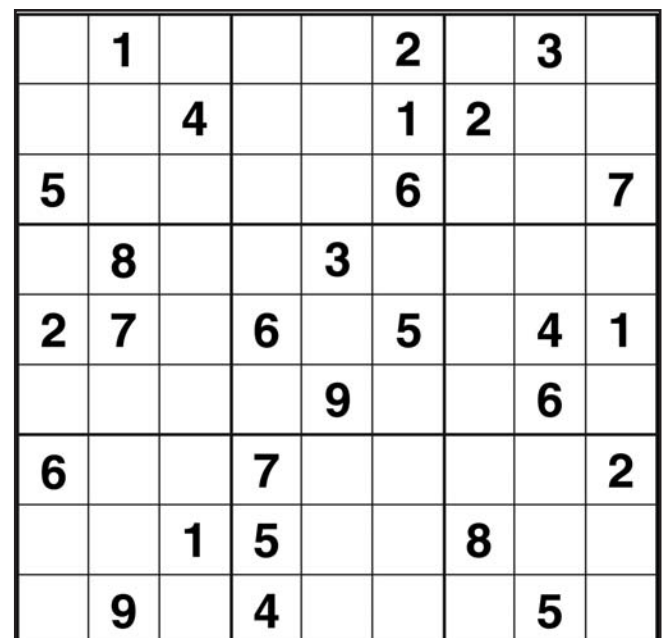
Adults \$15
Kids ages 5-11 \$10
4 & Under FREE

For Tickets & More Info: Call: 618-548-3438 ext. 1
Email: apostolicsofsalem@hotmail.com

Wilson & Wilson Monument Co., Inc. MAUSOLEUMS, MONUMENTS, MARKERS, GRANITE SIGNS & BENCHES, CEMETERY LETTERING, PET MARKERS. 406 W. Poplar, Odin, Illinois 62870. P.O. Box 247 1-800-966-6488 (618)775-6488. Web: wilsonandwilsonmonuments.com. E-mail: wwmonco@gmail.com

CENTRALIA COIN, STAMP, ETC. Corner of Broadway & Cherry 533-4200 • www.centraliacoin.com Great Holiday Gift Ideas. Featured Item: Silver Christmas Coins. TOP PRICES PAID. GIFTS OF VALUE!!

Sudoku

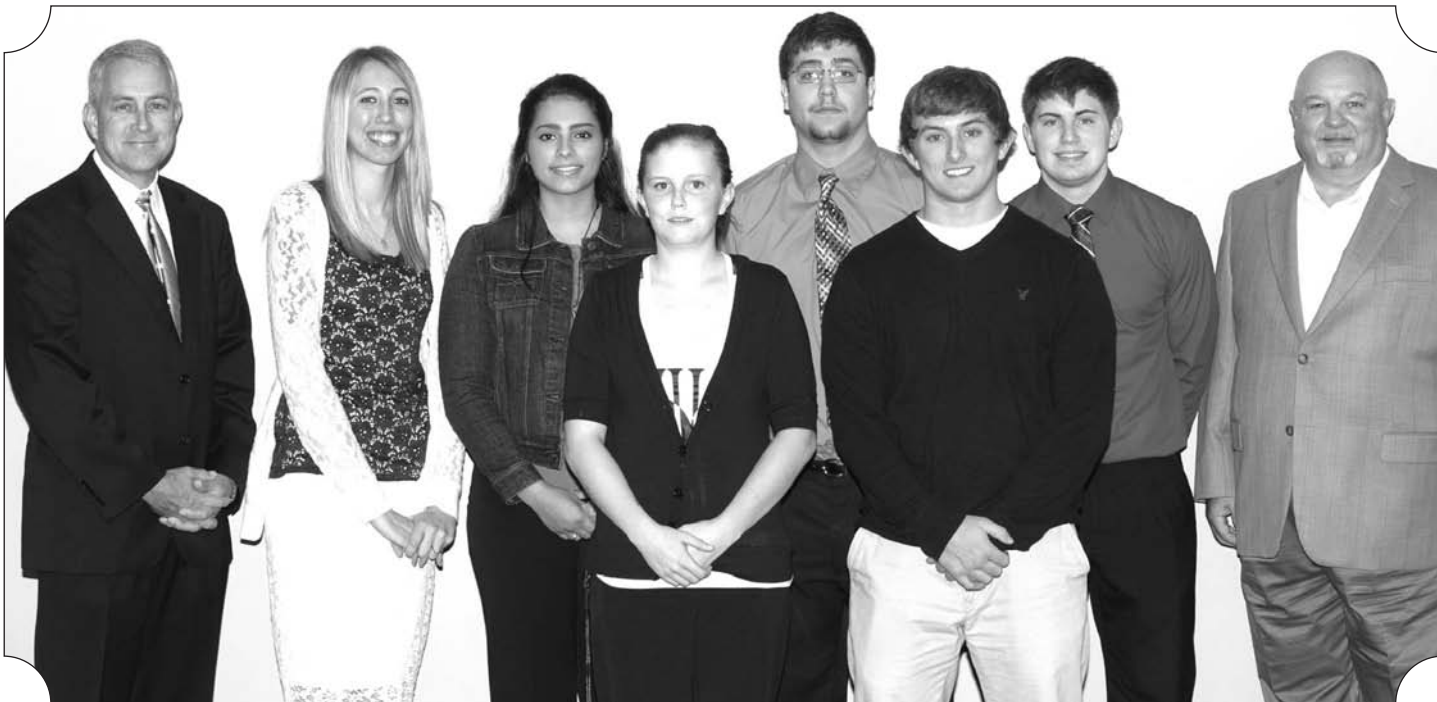


Solution to Sudoku puzzle printed on page 5.



Peoples National Bank Scholarship

Numerous scholarship donors met and dined with Rend Lake College student recipients at the 25th annual Rend Lake College Foundation Scholarship Dinner held October 13, 2014, at the Rend Lake Resort in Whittington. This annual event honors the financial support from donors as well as the students who receive that support. Pictured are, FROM LEFT, scholarship representative Hunt Bonan and scholarship recipients Emily Oxford, Julia Herzing, Maleah Lynch, Olivia Bailey and Bret Collins.



RLC Criminal Justice Department Scholarship/International Police Association Region 57 Scholarship

Numerous scholarship donors met and dined with Rend Lake College student recipients at the 25th annual Rend Lake College Foundation Scholarship Dinner held October 13, 2014, at the Rend Lake Resort in Whittington. This annual event honors the financial support from donors as well as the students who receive that support. Pictured are, FROM LEFT, scholarship representative Ron Meek, scholarship recipients Whitney Craddock, Evelyn Mendez, Dominique Koch, Blake Morgan, Shawn Hodge (International Police Association Region 57 Scholarship), Zack Hester and scholarship representative Chris Nielsen.

Strange BUT TRUE

BY SAMANTHA WEAVER
KING FEATURES

- It was beloved American author Mark Twain who made the following sage observation: "Always do right — this will gratify some and astonish the rest."
- In September of 2007, a law was enacted in China that made it illegal for a living Buddha to reincarnate without permission from the government. So far there's no word on what the punishment for breaking the law might be.
- Pretty much everyone has seen shellac on a piece of furniture or perhaps a guitar — it's used to give wood that rich shine. You might be surprised to learn that shellac is derived from a substance that is excreted by a tiny red insect found almost exclusively in the forests of Thailand. You might be even more surprised to learn that shellac isn't just found on wood; the next time you eat jelly beans or take a bite of a bright-red apple you

bought in a grocery store, you can thank the Kerria lacca insect for that lovely shine.

- American novelist Edgar Rice Burroughs was the oldest war correspondent of World War II, flying with the 7th Air Force on bombing runs in the Pacific at the age of 66.
- Otters float while they sleep, and in order to keep from floating away from each other while dozing, they hold hands.
- It's been reported that on his deathbed, noted French Enlightenment figure Voltaire was enjoined by a priest to renounce Satan. The philosopher is said to have admonished the priest, saying, "Now, now, my good man. This is no time for making enemies."

Thought for the Day:
"Life is to be lived. If you have to support yourself, you had bloody well better find some way that is going to be interesting. And you don't do that by sitting around." — Katharine Hepburn



Magnum Steel Works Inc. Scholarship
Numerous scholarship donors met and dined with Rend Lake College student recipients at the 25th annual Rend Lake College Foundation Scholarship Dinner held October 13, 2014, at the Rend Lake Resort in Whittington. This annual event honors the financial support from donors as well as the students who receive that support. Pictured are scholarship representative Julie Drake and scholarship recipient Jacob Ferguson.

Economy
continued from page 1

statewide average of 77 percent. Looking further back, 92 percent of students who graduated in 2005 were employed in Illinois within five years after completion.

RLC students also make up a large portion of taxpayers in the district. Both enrollees and completers from 2003 have paid an estimated \$80 million in state taxes and \$268 million in federal taxes combined through 2012.

The college is among the largest employers in the district and continues to generate additional economic benefits for local communities through expenditures and employment impacts. In 2012, almost 420 faculty and staff members lived in the district, with a total payroll of almost \$13.2 million.

The college also purchases goods and services from local communities, in addition to income earned and then spent by employees, to further boost the local economy. In 2012, RLC reported \$10.6 million in operating and capital expenditures. As these expenditures mixed into the local economy, RLC's direct and indirect expenditures approached a total of \$19.5 million in value and 500 jobs, according to the study.

"Like me, many of our faculty and staff are Rend Lake graduates themselves who see the value in a post-secondary education and are driven by the need to pass their knowledge on to others," said Wilkerson. "While our employees are a big factor in the local economy, we also work with other businesses for projects, like the recent Pathway to Suc-

cess or renovations to the art classrooms, and those businesses employ their own people who in turn continue to pump money back out. It's one big cycle that I'm proud to say RLC is a vital part of."

The EIS report also delved into the characteristics of students and program enrollment at RLC to better understand the economic impact. These students attended RLC between 2000 and 2012.

Overall, there has been an increase of about 3,100 enrollments at RLC in credit courses, going from 11,344 in 2000 to 14,469 in 2012. The rate of increase in program completers has also increased, according to the study, from 518 in 2000 to 877 in 2012, a 69.3 percent increase.

The study also found more students enrolling immediately after high school with the declining age of enrollees. The average age of students enrolling in 2000 was 37.3, and the number decreased to 34.7 in 2012. In fact, the percentage of enrollees aged 24 or less increased from 25.3 to 35.2 during those same years. Likewise, the average age of completers also decreased from 27.4 to 26.6 years.

Veteran enrollment has also increased at RLC, with a total of 790 veterans making up 5.5 percent of the total enrollment at RLC in 2012. They were 3.8 percent of the completers in 2012 as well. That same year, RLC was awarded its first of three consecutive Military Friendly School recognition's by veteran-owned business Victory Media. The credit was the result of a survey of approximately 8,000 schools based on their support of military stu-

dents. Of all the enrollees, the largest percentage of students (51.5 percent in 2012) indicate that improving skills for a current job as their purpose for attending RLC. Other large groups have been personal interest, followed by those preparing for a future job. Students pursuing an associate degree made up the majority of completers every year from 2000 to 2012.

Three programs represented 80 percent of all enrollments: vocational skills, baccalaureate instruction, and transfer instruction. Of those, four broad instructional programs stand out with 88 percent of enrollments in 2012, including health professions and related sciences; liberal arts and sciences, general studies and humanities; engineering-related technologies; and multi- or interdisciplinary sciences.

Health professions improved the most from 11 percent in 2000 to 45 percent in 2012. The same programs also had the largest percent of completers in 2012 at 35 percent, followed by liberal arts and sciences at 24 percent.

Kim Robert, RLC Dean of Allied Health, said the increase in enrollment into the health care programs and certificates is largely due to the growth in options for students and the bigger need in the community to care for an aging population.

"Since 2007, we've added two new Allied Health degrees in the Certified Medical Assistant, which is also a certificate, and the Radiologic Technology programs. We also have seven certificates for more specified instruction,"

said Robert. "In our district alone, there is a growing need for people in the health care industry that can't be filled quickly enough, resulting in more of our students getting jobs immediately following graduation. It's wonderful to see the huge growth in attendees and graduates who are getting back out into the workforce."

Modeled after a statewide economic impact analysis of Illinois Community Colleges, the EIS for RLC was commissioned to better understand the return from investing in the college. About 15 individuals from NIU, the ICCB, and the IDCS contributed to developing the report.

RLC is one of 39 community colleges in the state that play a vital role in the educational and workforce preparation of the individuals and communities they serve. RLC provides high-quality, accessible, and cost-effective educational opportunities for residents in an eight-county area in Southern Illinois that includes portions of Franklin, Hamilton, Jefferson, Perry, Washington, Wayne, White, and Williamson counties.

Founded in 1955 as Mt. Vernon Community College, RLC offers academic and career technical instruction through associate degree, transfer, or certificate programs of study as well as adult and continuing education programs that serve as a gateway to higher education for many community residents, employers, and K-12 students. Courses are offered on the RLC main campus in Ina, at satellite campuses in Pinckneyville and Mt. Vernon, and through online instruction.

The Wig Shop

- Wigs • Turbans • Hats • Scarves
- Watches • Jewelry & Accessories

Private wig fittings by appt. Private wig fitting room.
Jenny Holsapple, Owner
618-548-9Wig (944) or stop in!
1325 West Whittaker Ste AA • Salem, IL 62881
Wed-Fri 10am-4pm • Sat 10am-1pm (days & hours may vary)

Coming Soon

BLACK FRIDAY

Edition

NOVEMBER 26

Join the list of advertisers like

**K-Mart
Wal-Mart
Kohls
Big Lots**

Who advertise in the Sentinel Black Friday Edition!

DON'T MISS THE "LARGEST SALES EVENT" OF THE YEAR!

Sentinel

Call 532-5606 or 246-2000 to advertise today!



ATHLETICS

W S E C T I O N

Coming up for RLC athletics

NA, Ill. (Nov. 20, 2014) — The 2-3 men's basketball team has logged wins over Illinois Central and an SIU Rec Team, and losses to Jefferson City Tech, Parkland and Lincoln. The Warriors will play at John Wood (Nov. 22, 5 p.m.) and host Southwestern Illinois (Nov. 25, 7:30 p.m.).

Women's basketball, now 1-2, has a win against Lindenwood and losses to St. Louis CC and Jefferson College (Mo.). The Lady Warriors will play at Shawnee (Nov. 22, 5:30 p.m.) and host Southwestern Illinois (Nov. 25, 5:30 p.m.). Visit www.rlc.edu/warriors for updates and more.

Men's Basketball takes loss to Parkland at home

BY REANNE PALMER
RLC SPORTS INFORMATION
NA, Ill. (Nov. 13, 2014) — The Rend Lake College Warriors moved to 1-2 last night after a 50-61 loss to Parkland College in Waugh Gymnasium. The Warriors trailed 21-35 going into the half, but gained some momentum to outscore the Cobras in the

second 29-26. Sophomore Robert Sawyer (Louisville, Ky.) led the team in points at 14, and was followed by freshmen Derek McKeithen (Columbus, Ohio) at 12 and Armani Towns (Columbus, Ohio) at 10. Other top performers for RLC were Dedic Byrd (Champaign) with seven points; Ivan Medina (Pearland, Texas),

Ryan Otis (Houston, Texas), and Clint Johannes (Ashley) each with two points; and Shakari Hawkins (Mt. Vernon) with one. Top scorers for the Parkland Cobras were Corvon Butler (Indianapolis, Ind.) with 18 points and Kamal Shasi (South Holland) with 10 points. RLC will play the next four

games on the road against Lincoln College tomorrow, Eureka J.V. on Nov. 15, Lincoln Land on Nov. 19, and John Wood on Nov. 22. Their next home game, and first GRAC conference game of the year, will be at 7:30 p.m. Nov. 25 against Southwestern Illinois. For all things athletic at The Lake, visit www.rlc.edu/warriors.

Twin Willows NURSING CENTER

- Medicare approved rehabilitation services provided by "Rehab Care" a provider of physical, occupational and speech therapy in forty-three states.
- Locally owned and operated.
- Public Health annual inspection for 3-2007 cites no deficiencies — public health's highest compliment.
- When you've been in the hospital and need therapy to get back home call 548-0542.



Come Live With Us,
Phone 548-0542
Route 37 North • Salem
Todd Woodruff
Administrator Since 1976

Rend Lake's Melliere named to All-Region team in volleyball

BY REANNE PALMER
RLC SPORTS INFORMATION
NA, Ill. (Nov. 12, 2014) — Rend Lake College volleyball player Cassidy Melliere has been named to the NJCAA DII All-Region XXIV 2nd Team. Melliere is a sophomore from Prairie du Rocher and

graduate of Red Bud High School. Melliere and the Lady Warriors competed in the Region 24 tournament, falling to No. 1 ranked Parkland College in the first round. Melliere, the team's libero, logged over 400 digs throughout the sea-

son, with a game high of 46 against Lindenwood University. She also had approximately 20 aces and seven kills. The Lady Warriors are coached by Sara Crews. For all things athletic at The Lake, visit www.rlc.edu/warriors.



Cassidy Melliere

Lady Warriors Basketball falls to Jefferson College

BY REANNE PALMER
RLC SPORTS INFORMATION
HILLSBORO, Mo. (Nov. 13, 2014) — The Rend Lake College Lady Warriors Basketball team fell 64-76 last night to Jefferson College of Hillsboro, Mo. Leading RLC was freshman Jordan Bruenton (Cincinnati, Ohio) with a double-double for the night

at 11 points and 11 rebounds. Freshmen Brianna Hawkins (Louisville, Ky.) and Jasmine Washington (Evansville, Ind.) also scored in double digits with 17 and 12 points respectively. Other lead scorers were Valencia Chandler (Joliet) with nine points, Savannah Enlow (Corydon, Ind.) with seven points, and

Mykhaela Tolds (Pearland, Texas) with seven points. The Lady Warriors are now 1-2 for the season. They will play Shawnee College in Ullin on Nov. 22 before returning home Nov. 25 to take on Southwestern Illinois, their first GRAC conference match-up. For all things athletic at The Lake, visit www.rlc.edu/warriors.

Meeting on your schedule, not ours.

Face-to-face meetings. One-on-one relationships. How did Edward Jones become one of the biggest financial services companies in the country? By not acting like one. With more than 10,000 offices. Including the two in Salem, IL.

Bill Dwyer, AAMS® Financial Advisor
521 West Main
Salem, IL 62881
618-548-6555

Darren L. Dwyer Financial Advisor
521 West Main
Salem, IL 62881
618-548-6555

Member SIPC **Edward Jones** MAKING SENSE OF INVESTING

Find your new best friend

in the **Sentinel Classifieds**

Subscribe today!

532-5606
246-2000

Quick Lane TIRE & AUTO CENTER

Located At **LTD Ford**
848 E. Noleman, Centralia • 1-618-532-4733

GET YOUR CAR INSPECTED FOR WINTER FREE

We will beat any price on the 13 major tire brands we sell... GUARANTEED!

LOW PRICE GUARANTEE

WE'LL CHECK YOUR BATTERY & TIRE PRESSURE FREE

THE BIGGEST TIRE EVENT EVER

\$70.00 Cash Rebate On 4 Tires

RECEIVE UP TO A **\$70** / UP TO ADDITIONAL **\$70**

MAIL-IN REBATE / MAIL-IN REBATE*

*Use a Ford or Quicklane Card. EXPIRES 12-1-14

• Bridgestone • Goodyear • Hankook • Yokohoma • Continental • Pirelli • Dunlop

BLACK FRIDAY SPECIAL
11-20 THRU 12-1

BUY 4 TIRES & RECEIVE ALIGNMENT

1/2 OFF

FREE ALIGNMENT CHECKS

State Of The Art Lasertech Alignment. Cars & Light Duty Trucks. Offer valid with coupon. EXPIRES 12-1-14

COOLANT FLUSH
\$89.95

Most vehicles. See Quick Lane Manager for details. Offer valid with coupon. EXPIRES 12-1-14

We'll machine flush with cleaner and add new coolant

Coming Soon

BLACK FRIDAY

Edition

NOVEMBER 26

Find out what's on sale from...

K-Mart
Wal-Mart
Stage/Goody's
Big Lots
Kohls Plus Many More!

Don't miss the "Largest Sales event" of the year!

GUARANTEE YOUR COPY BY SUBSCRIBING TODAY!

Sentinel

START YOUR DAY INFORMED!
Call 532-5606 or 246-2000

SHOPPING STARTS **HERE**

NEWSPAPER ADVERTISING WORKS!

Every day, locals look to us for the latest shopping news, sales and coupons. Put your business in the spotlight with professionally designed print or pinpoint your market in one of our themed special sections. Research shows that 79% of readers acted on a newspaper ad in the past month, and newspaper advertising is still the number-one resource consumers use to plan shopping and purchasing decisions. So why are you still waiting? Put newspaper advertising to work for you today!

TO ADVERTISE, CALL

SENTINEL 532-5604 — OR — 246-2000

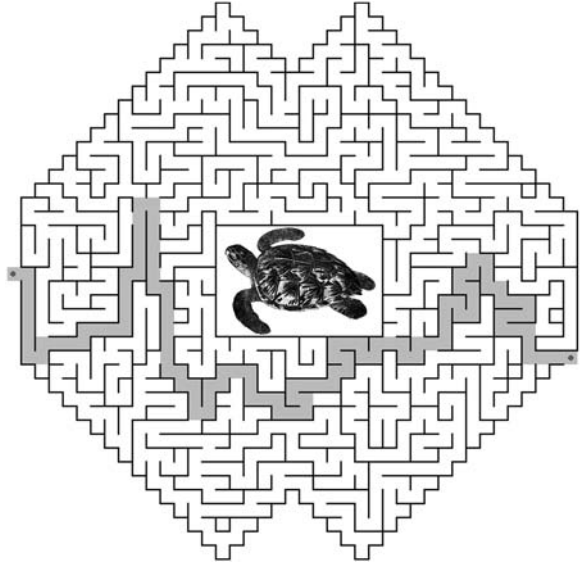
RLC looking to fill part-time job postings

As of Nov. 14, Rend Lake College was seeking to fill these part-time positions: TRIO Academic Tutors; Diesel Technology Instructors; Assistant Child Care Provider – Preschool Room; and Pit Orchestra Director. Learn more and start the application process at www.rlc.edu/jobs.

Solution to page 2 Sudoku puzzle.

8	1	7	9	5	2	6	3	4
9	6	4	3	7	1	2	8	5
5	2	3	8	4	6	9	1	7
4	8	6	1	3	7	5	2	9
2	7	9	6	8	5	3	4	1
1	3	5	2	9	4	7	6	8
6	5	8	7	1	3	4	9	2
3	4	1	5	2	9	8	7	6
7	9	2	4	6	8	1	5	3

Solution to page 2 Megamaze puzzle.

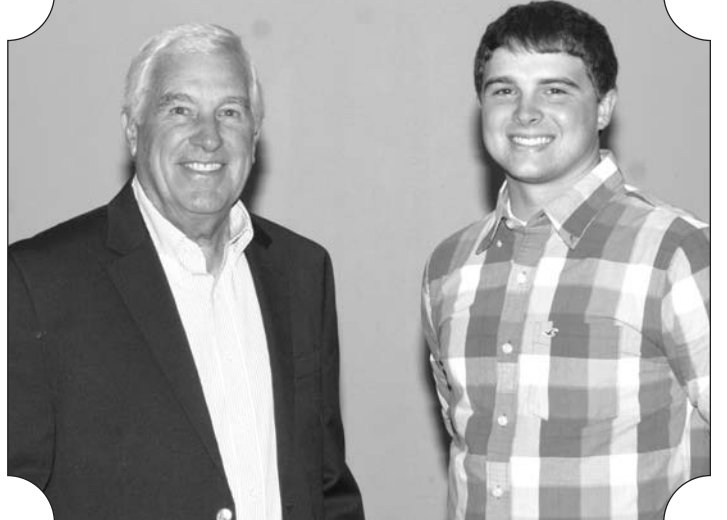


Solution to page 2 Crossword puzzle.

P	O	S	E	D	A	S	A	P	J	A	M		
A	L	I	B	I	L	A	L	A	C	U	R	E	
G	A	R	B	A	G	E	C	A	N	O	N	I	N
E	Y	E	G	R	R	S	T	A	C	K	E	D	
W	R	I	T	E	S	O	D	S					
G	O	T	E	A	M	C	A	E	S	A	R		
A	L	A	R	M	B	L	U	N	T	A	R	T	
I	D	L	E	B	L	A	N	D	S	W	E	E	
A	S	K	F	R	U	I	T	G	L	E	N	N	
S	T	A	R	E	R	M	O	O	R	E	S		
S	T	A	R	S	P	E	L	T					
F	O	R	R	E	A	L	A	N	D	H	I	S	
I	F	A	T	B	A	D	R	U	B	B	I	S	H
L	A	S	S	E	M	I	T	A	I	S	L	E	
A	S	H	L	A	D	Y	R	O	S	E	S		



Keith Bauman Memorial Scholarship
Numerous scholarship donors met and dined with Rend Lake College student recipients at the 25th annual Rend Lake College Foundation Scholarship Dinner held October 13, 2014, at the Rend Lake Resort in Whittington. This annual event honors the financial support from donors as well as the students who receive that support. Pictured are scholarship recipient Claire Pytlinski and scholarship representative Jim Laird.



North Hamilton County Coal Association Scholarship
Numerous scholarship donors met and dined with Rend Lake College student recipients at the 25th annual Rend Lake College Foundation Scholarship Dinner held October 13, 2014, at the Rend Lake Resort in Whittington. This annual event honors the financial support from donors as well as the students who receive that support. Pictured are scholarship representative Joe Bernard and scholarship recipient Lucas Anselment.

STRIVE continued from page 1
designed to encourage seniors to improve on grades and attendance during their last year. Two students who have the best improvement in grades and attendance are awarded one-year full scholarships to RLC through the Foundation, said RLCF CEO Shawna Bullard. "The STRIVE students did the job shadowing with the help of the Rotary Clubs, the Jefferson County Chamber of Commerce, and the Foundation. It's the first time we've done this activity, and there will be about 55 to 60 students all over the county participating," said Bullard. "We're fortunate to have students coming to our campus who

are interested in the unique Cosmetology and Applied Science and Technology programs we have, and we hope to be able to encourage them to continue their education after high school." Students from all over Jefferson County participated, including those from MVTHS, Waltonville High School, Webber Township High School, and Woodlawn High School. After the job shadowing in the morning, Crossroads Community Hospital sponsored a lunch for the students before they returned to school. For more information about the STRIVE program, contact the RLC Foundation at (618) 437-5321, Ext. 1214 or foundation@rlc.edu.

Home Accents

Categories Listed
DOES NOT INCLUDE SEASONAL DEPARTMENT

50% OFF

• Trays, Coasters & Place Mats
• Knobs, Drawer Pulls & Handles
• Glass Decor Sale
INCLUDES GLASS DEPARTMENT, FLORAL GLASS VASES & CRAFT GLASS CONTAINERS
DOES NOT INCLUDE CRAFT STAINED GLASS OR GLASS TABLETOPS

• Wood Decor Sale
CHOOSE FROM WOOD WALL DECOR & FINISHED DECORATIVE WOOD ACCESSORIES
DOES NOT INCLUDE FURNITURE OR UNFINISHED CRAFT WOOD

• Metal Decor Sale
CHOOSE FROM METAL WALL DECOR AND FUNCTIONAL & DECORATIVE METAL ACCESSORIES
INCLUDES FLORAL METAL CONTAINERS
DOES NOT INCLUDE FURNITURE

• Collage Frames
• Candleholders WALL & TABLE
• Decorative Memo Boards, Chalkboards & Corkboards
ITEMS PRICED \$24.99 & UP

FALL & CHRISTMAS ITEMS ARE NOT INCLUDED IN HOME ACCENTS SALE

<h4>Christmas Party & Gift Wrapping Supplies</h4> <h2>50% OFF</h2> <p>• Gift Bags, Sacks & Boxes • Gift Wrap, Tags & Boxed Cards • Paper Plates & Napkins • Bows & Trims • Cookie & Candy Tins & More DOES NOT INCLUDE CANDY, SCOTCH TAPE & SCOTCH PRODUCTS</p>	<h4>Christmas Decor</h4> <h2>50% OFF</h2> <p>DOES NOT INCLUDE FABRIC, NEEDLE ART, CANDY, LIGHT SETS, LIGHT ACCESSORIES, SCOTCH TAPE OR SCOTCH PRODUCTS</p>	<h4>Christmas Trees</h4> <p>12 in - 12 ft</p> <h2>50% OFF</h2>	<h4>Christmas Light Sets</h4> <table style="width: 100%;"> <tr> <td>• GE Mini Light Set 100 Count 4.99</td> <td>• Chaser Light Set 150 Count, 16 Function 12.99</td> </tr> <tr> <td>• Gutter & Shingle Clips 100 Count 4.99</td> <td>• Net Style Lights 25 Count 9.99</td> </tr> <tr> <td>• GE Icicle Light Set 300 Count 12.99</td> <td>• GE Light Sets 25 Count, G-9 9.99</td> </tr> </table>	• GE Mini Light Set 100 Count 4.99	• Chaser Light Set 150 Count, 16 Function 12.99	• Gutter & Shingle Clips 100 Count 4.99	• Net Style Lights 25 Count 9.99	• GE Icicle Light Set 300 Count 12.99	• GE Light Sets 25 Count, G-9 9.99
• GE Mini Light Set 100 Count 4.99	• Chaser Light Set 150 Count, 16 Function 12.99								
• Gutter & Shingle Clips 100 Count 4.99	• Net Style Lights 25 Count 9.99								
• GE Icicle Light Set 300 Count 12.99	• GE Light Sets 25 Count, G-9 9.99								
<h4>Christmas Floral</h4> <p>• Arrangements • Bushes • Wreaths • Garlands • Swags • Stems • Picks • Ribbon 50% OFF DOES NOT INCLUDE CUSTOM DESIGNS</p>	<h4>Christmas Crafts</h4> <p>ALL ITEMS LABELED MAKE IT CHRISTMAS, CHRISTMAS CRAFTS, JESSE JAMES, ROBERT STANLEY, CRAFT COLLECTIONS & CHRISTMAS BY BEAD TREASURES™ 50% OFF</p>	<h4>Fall Home Decor, Fall Crafts & Fall Floral</h4> <h2>80% OFF</h2> <p>DOES NOT INCLUDE FALL FABRICS, FALL PARTY OR FLORAL CUSTOM DESIGNS</p>	<h4>Christmas Light Sets</h4> <table style="width: 100%;"> <tr> <td>• Yarn Bee® Effervesce™ 4.49 4 oz</td> <td>• Needle Art Baby Bee™ 4.22 3 & 4 oz</td> </tr> <tr> <td>• Soft Secret™ 3.33 4 & 6 oz</td> <td>• Baby Bee™ Baby Yarns 4.22 3 & 4 oz</td> </tr> </table> <p>• Packaged Quilt Batting & Pillow Forms 30% OFF</p>	• Yarn Bee® Effervesce™ 4.49 4 oz	• Needle Art Baby Bee™ 4.22 3 & 4 oz	• Soft Secret™ 3.33 4 & 6 oz	• Baby Bee™ Baby Yarns 4.22 3 & 4 oz		
• Yarn Bee® Effervesce™ 4.49 4 oz	• Needle Art Baby Bee™ 4.22 3 & 4 oz								
• Soft Secret™ 3.33 4 & 6 oz	• Baby Bee™ Baby Yarns 4.22 3 & 4 oz								
<h4>Floral Categories Listed</h4> <p>DOES NOT INCLUDE SEASONAL DEPARTMENT OR ITEMS LABELED "FLORAL ACCESSORIES"</p> <h2>50% OFF</h2> <p>• Floral Arrangements • Flowering & Greenery DOES NOT INCLUDE CUSTOM DESIGNS OR POTTED TREES</p> <p>• Ribbons & Trims by the Roll INCLUDES RIBBON, TULLE & DECO FISH IN OUR WEDDING, FLORAL & FABRIC DEPARTMENTS DOES NOT INCLUDE RIBBON, TRIM OR TULLE SOLD BY THE YARD</p>	<h4>Floral Categories Listed</h4> <p>• Garlands, Swags, Wreaths & Teardrops • Flowering & Greenery</p> <p>• Furniture Always 30% OFF THE MARKED PRICE*</p>	<h4>Furniture</h4> <p>Always 30% OFF THE MARKED PRICE*</p>	<h4>All Items Labeled Fall Party</h4> <p>Plates, Napkins & More 50% OFF</p>						
<h4>Chipboard, Chip Decor™ Letters & Shapes and Mixed Media™</h4> <p>by the Paper Studio® DOES NOT INCLUDE CHIP DECOR CRICUT® CARTRIDGE</p> <p>• Spare Parts® Embellishments by the Paper Studio® CHOOSE FROM HUNDREDS OF BEADS, BOTTLE CAPS, FLOWERS & OTHER DECORATIVE ITEMS</p>	<h4>Papercrafting</h4> <p>Most Categories Listed 50% OFF</p> <p>• Papercrafting Totes & Organizers by the Paper Studio®</p> <p>• Stickers by Sticker™, Thickers™, Remarks & Moments™ 40% OFF CHOOSE FROM OVER 300 STYLES</p>	<h4>Scrapbook Albums & Refill Pages</h4> <p>by the Paper Studio® CHOOSE FROM OVER 200 STYLES DOES NOT INCLUDE PHOTO ALBUMS</p>	<h4>Poster Board</h4> <p>4/1.00 WHITE 2/1.00 COLORED & FLUORESCENT DOES NOT INCLUDE GOLD OR SILVER</p> <p>• Art Easels & Tables 30% OFF EASELS PRICED \$12.99 & UP</p> <p>• Master's Touch® Oil Paint 4.87 50 ml 12.87 200 ml</p>						
<h4>Poetic Spirit</h4> <p>Categories Listed 50% OFF</p> <p>• Poetic Spirit by Bead Treasures™ PENDANTS, BEADS, LEATHER & MORE</p> <p>• Glass Beads by Bead Treasures™ INCLUDES 1/2- & 1-1/2 TUBES</p> <p>• Color Gallery by Bead Treasures™ 7" STRANDS OF FASHION GLASS BEADS</p>	<h4>Brilliance and Bead Treasures™</h4> <p>GLASS FACETED BEADS, STRANDS, FLAT-BACKED STONES & GLASS PENDANTS</p> <p>• Czech Glass Beads CHOOSE FROM SEED, BUGLE, FACETED & MIXED BEADS</p> <p>• Metal Gallery DOES NOT INCLUDE STERLING SILVER</p>	<h4>Home Decor Fabric</h4> <p>CHOOSE FROM PRINTS, SOLIDS, SHEERS & LAMBRATED FABRIC ALWAYS 30% OFF THE MARKED PRICE*</p> <p>• Fall Apparel Fabric 30% OFF</p>	<h4>Fashion Fabric</h4> <p>• Calico Prints & Solids INCLUDES APPAREL PRINTS & BATHS ALWAYS 30% OFF THE MARKED PRICE*</p> <p>• Ribbon, Trim & Tulle Spools DOES NOT INCLUDE RIBBON, TRIM OR TULLE SOLD BY THE YARD 50% OFF</p>						

* DISCOUNTS PROVIDED EVERY DAY; MARKED PRICES REFLECT COMPARABLE PRICES OFFERED BY OTHER SELLERS FOR SIMILAR PRODUCTS.

COUPON

PIZZA MAN

Chicken Fajita Salad

\$1.00 OFF

Your Hometown Pizza Man
(A Salem Tradition)

1413 W. Main Salem
Expires 11/26/14 **548-5331**

WE USE ONLY FRESH INGREDIENTS

"Ask me about the AARP® Auto & Home Insurance Program from The Hartford."

Now available in your area!

SHERRI LUTZ
THE INSURANCE SHOPPE

This auto and home insurance is designed exclusively for AARP members – and is now available through your local Hartford independent agent!

Call Today for your FREE, no-obligation quote:

618-548-1053

SHERRI LUTZ
THE INSURANCE SHOPPE
1141 S. BROADWAY
SALEM, IL 62881

The AARP Automobile Insurance Program from The Hartford is underwritten by Hartford Fire Insurance Company and its affiliates, One Hartford Plaza, Hartford CT 06155. In Washington, the program is underwritten by Trumbull Insurance Company. AARP and its affiliates are not insurance agencies or carriers and do not employ or endorse insurance agents, brokers, representatives or advisors. This program is provided by The Hartford, not AARP or its affiliates. Full endorsement. The Hartford pays a royalty fee to AARP for the use of AARP's intellectual property. These fees are used for the general purposes of AARP. AARP membership is required for program eligibility in most states. Applicants are individually underwritten and some may not qualify. Specific features, credits, and discounts may vary and may not be available in all states in accordance with state filings and applicable law. The premiums quoted by an authorized agent for any program policy include the additional costs associated with the advice and counsel that your authorized agent provides.

HOBBY LOBBY

PRICES GOOD IN STORES AND ONLINE THROUGH NOVEMBER 22, 2014
SOME ADVERTISED ITEMS NOT AVAILABLE ONLINE. SALES SUBJECT TO SUPPLY IN STOCK.
SELECTION AND QUANTITIES VARY BY STORE. AD DOES NOT APPLY TO PRE-ORDERED ITEMS.

STORE HOURS:
9 A.M. - 8 P.M.
CLOSED SUNDAY

40% OFF

One Item at Regular Price

Valid through November 22, 2014

Offer good for one item at regular price only.
One coupon per customer per day. Must present coupon at time of purchase.
Offer is not valid with any other coupon, discount or previous purchase.
Excludes CRICUT® products, Tim Holtz® Vagabond™ Machine, Silhouette Cameo™ Machine, candy, bellum tanks, gift cards, custom orders, special orders, labor, rentals or class fees.
A single cut of fabric or trim "by the yard" equals one item.
Online fabric & trim discount is limited to 10 yards, single cut.
Cash Value 1/10C.

3413

3413

• MOUNT VERNON: Broadway & South 42nd Street
in the Times Square Mall (618) 242-2259

VISIT OUR SITE — HOBBYLOBBY.COM